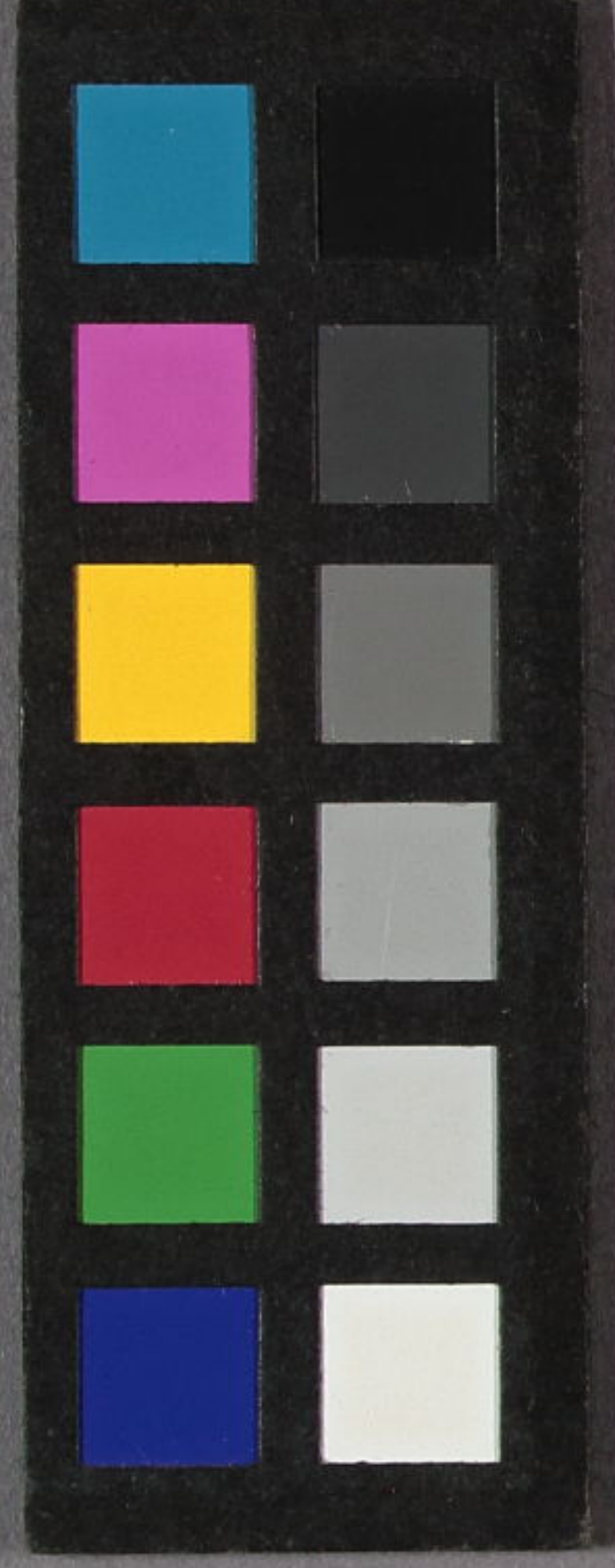


五世高僧遺像

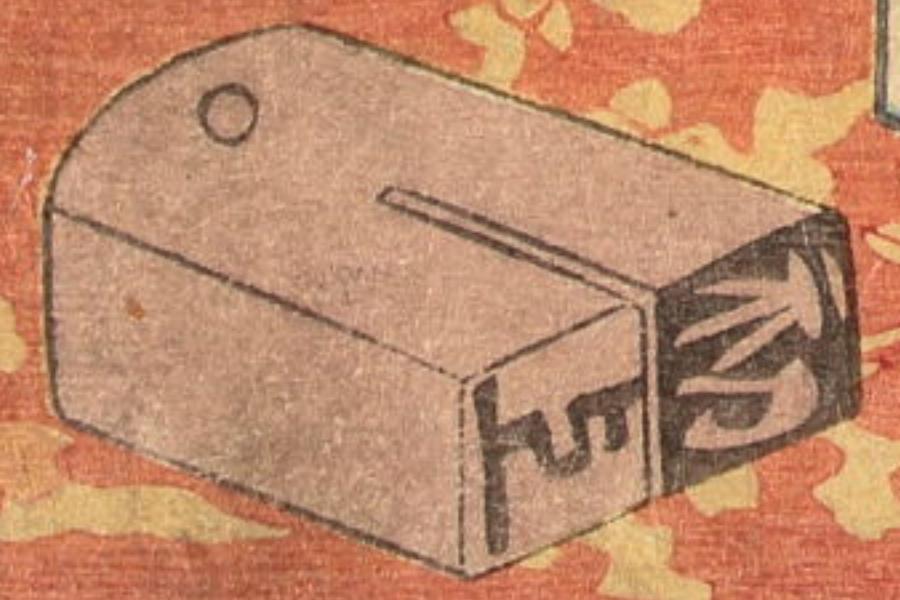
遺像  
504

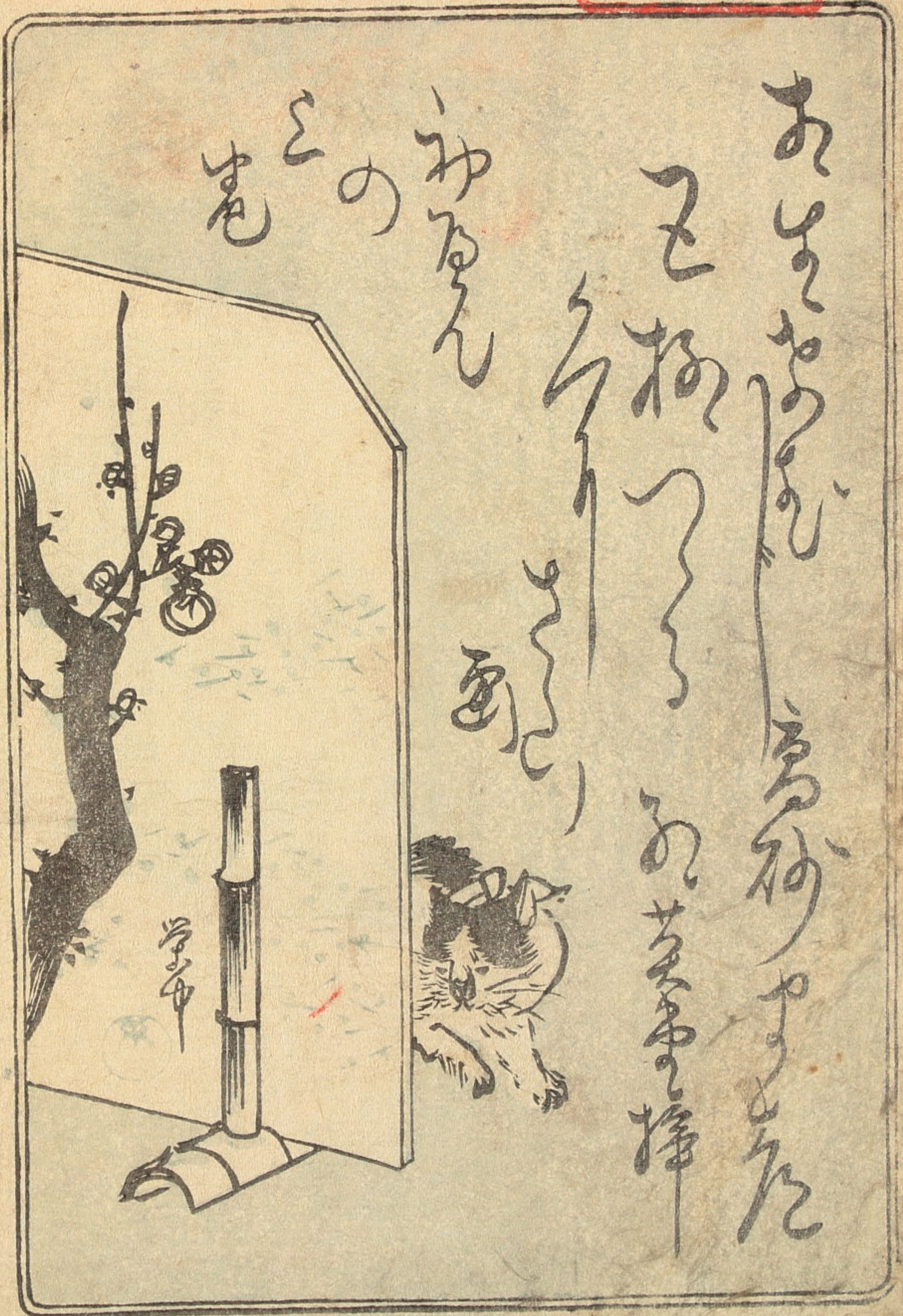


五



松林堂文庫





あはれおぼえ  
 玉梅つゝ  
 の  
 初るん  
 の  
 毛

人間業ありの美悪ありの邪正ありの難易ありの損益あり  
 花のありの實ありの雨道全ありの冬夏ありの男女ありの  
 性善ありの性悪ありの種ありのあつねありの古事ありの  
 ことありのまことありの影ありの猫と犬直毛が怪風を  
 合せし合巻もあつねありの灰毛猫と柳や葉も  
 強き一様ありのさしやありのさしやありのさしやありの  
 ことありのさしやありのさしやありのさしやありのさしやあり  
 怪ありのさしやありのさしやありのさしやありのさしやあり

並木舎不栞

椿園也

辛酉年

目三ノ

清水の冠者  
義高

目  
左  
の

阿蘇  
の  
豪  
傑



我  
仲  
巴  
御  
前

木  
ノ  
一  
ノ



乙



Handwritten Japanese text in kuzushiji script, located in the upper left quadrant of the page. The text is arranged in vertical columns, reading from right to left. It appears to be a commentary or a list of names related to the scene depicted in the illustration.

Handwritten Japanese text in kuzushiji script, located in the upper right quadrant of the page. The text is arranged in vertical columns, reading from right to left. It appears to be a commentary or a list of names related to the scene depicted in the illustration.

Handwritten Japanese text in kuzushiji script, located in the lower left quadrant of the page. The text is arranged in vertical columns, reading from right to left. It appears to be a commentary or a list of names related to the scene depicted in the illustration.

Handwritten Japanese text in kuzushiji script, located in the lower right quadrant of the page. The text is arranged in vertical columns, reading from right to left. It appears to be a commentary or a list of names related to the scene depicted in the illustration.





Handwritten text in the upper left corner, likely a title or chapter heading.

Handwritten text in the upper middle section, possibly a dialogue or narrative passage.

Handwritten text in the middle section, continuing the narrative or dialogue.

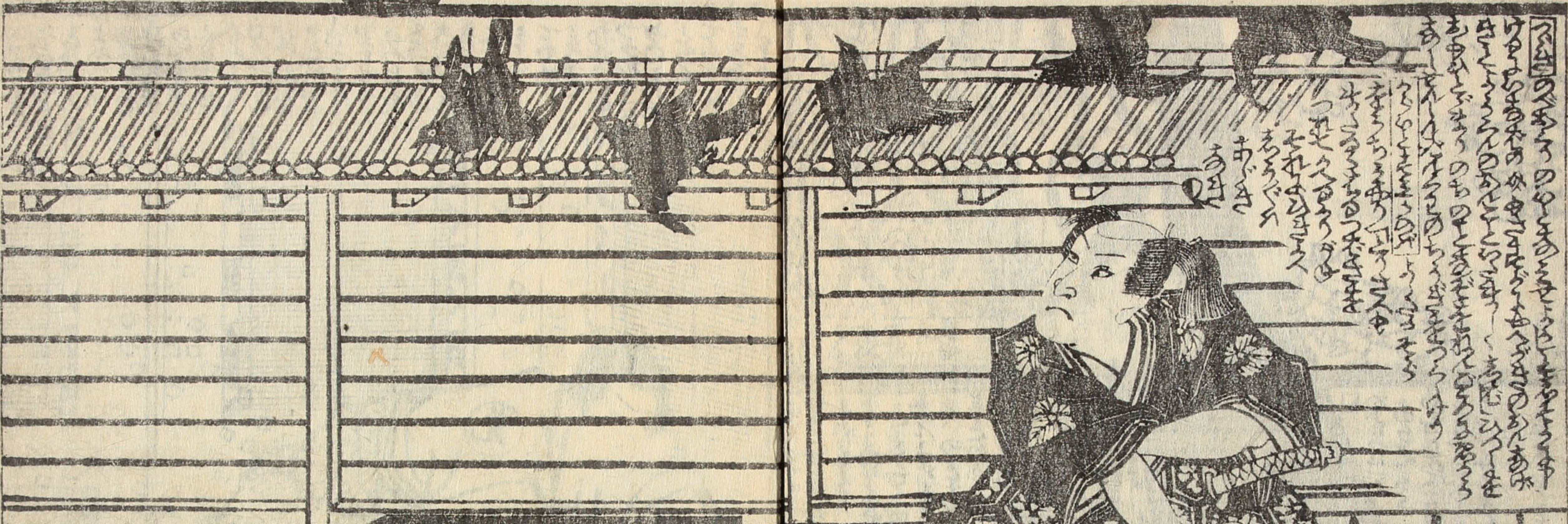
Handwritten text in the lower left corner, likely a concluding note or commentary.

Handwritten text in the lower middle section, continuing the narrative or dialogue.

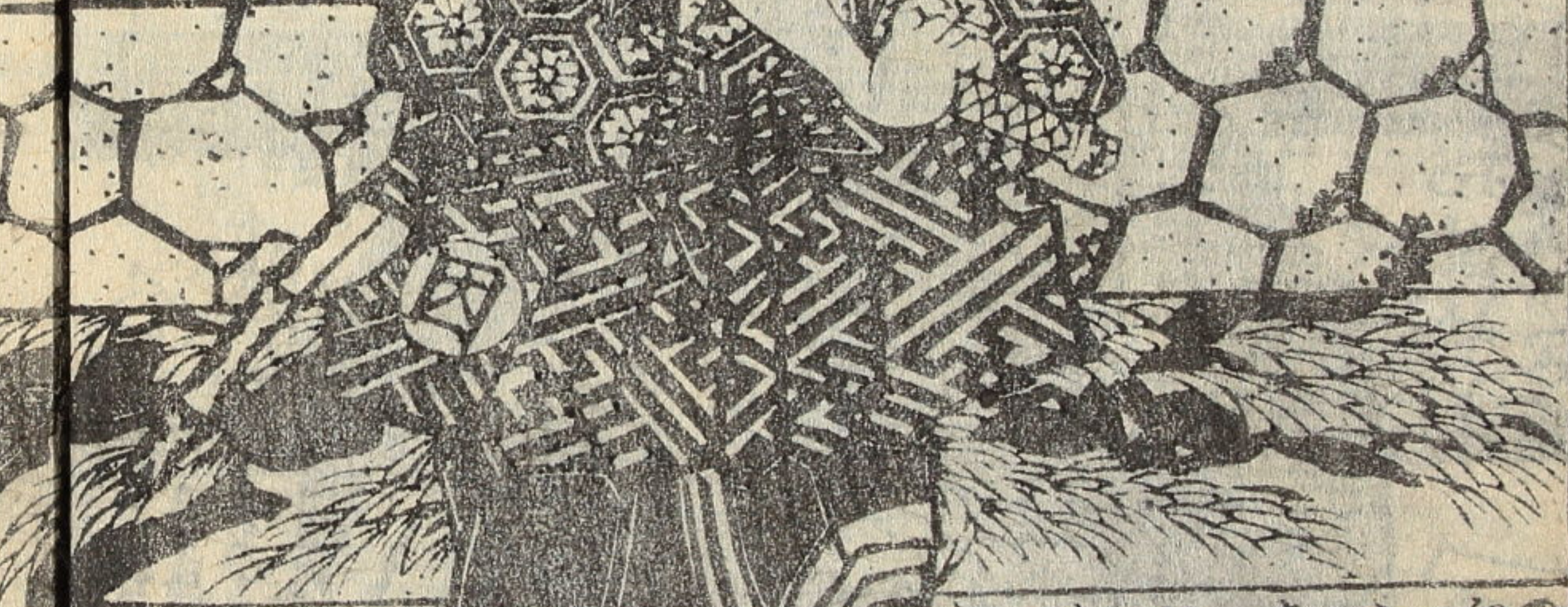
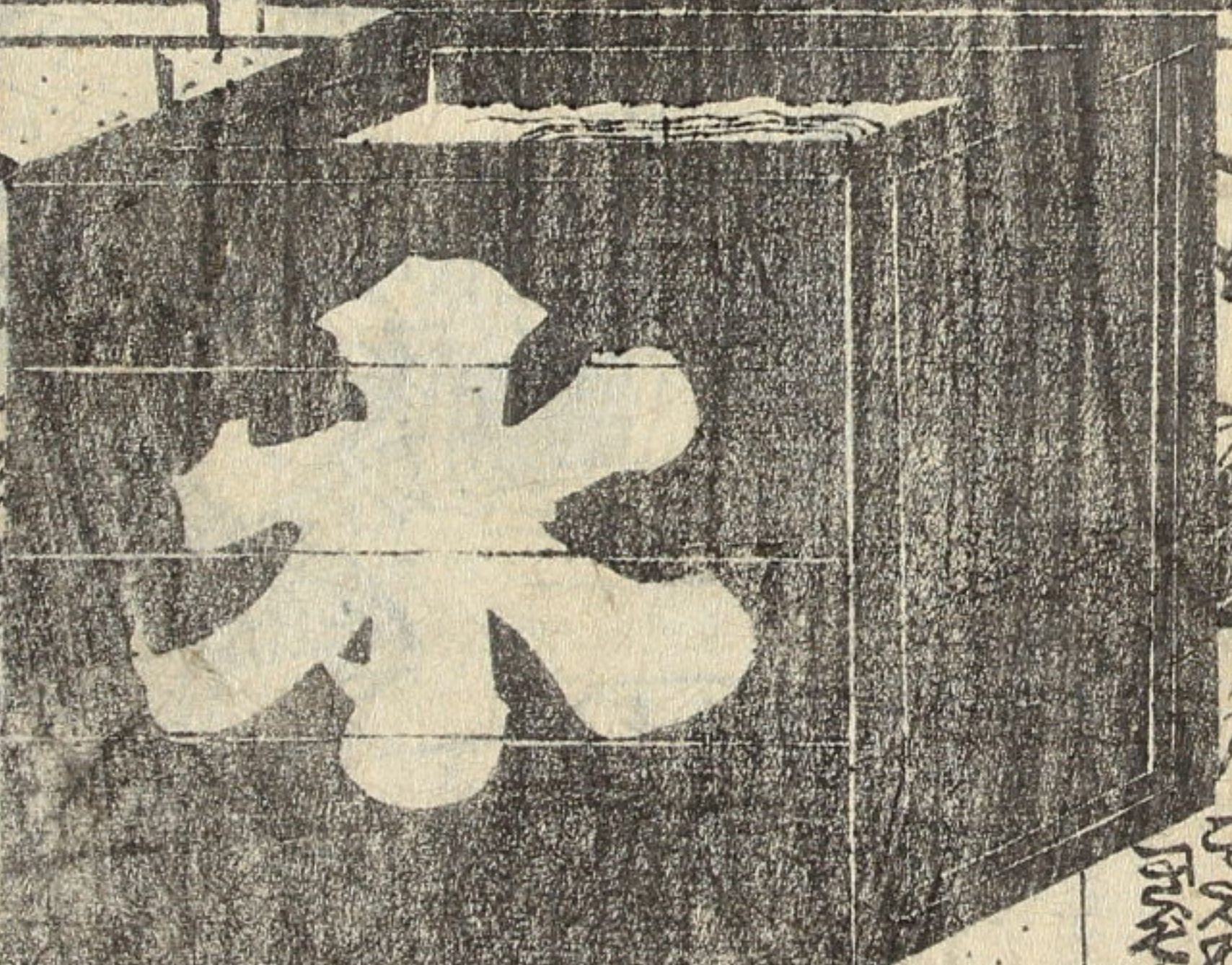
Handwritten text in the lower right section, continuing the narrative or dialogue.

Vertical text on the far left edge of the page.

Vertical text on the far right edge of the page.



Handwritten text in the upper right corner of the page, likely a title or introductory text.



Multiple columns of handwritten text at the bottom of the page, providing a detailed description or commentary on the illustration above.



Handwritten text in a cursive script, likely a list or index, located at the top of the left page. The text is arranged in several columns and includes various characters and symbols.



Handwritten text in a cursive script, likely a list or index, located at the top of the right page. The text is arranged in several columns and includes various characters and symbols.



Handwritten text in a cursive script, likely a list or index, located at the bottom of the right page. The text is arranged in several columns and includes various characters and symbols.



田 三 四





# 逆木舎五柳



# 梅蝶樓國貞画



# 新編 蛸牛譚

初編三編並に新編

三亭春馬著作  
梅蝶樓國貞画

# 新編 血郎噺狂果

同司

同画

# 買母散

此散は母の心を和ませ、子に懐かしむるに最も宜し。凡そ母を失ふるは、人の子に於て最も可哀なる事なり。故に母を思ふは、人の子に於て最も可貴なる事なり。此散は母の心を和ませ、子に懐かしむるに最も宜し。凡そ母を失ふるは、人の子に於て最も可哀なる事なり。故に母を思ふは、人の子に於て最も可貴なる事なり。

千葉堂孝輔製

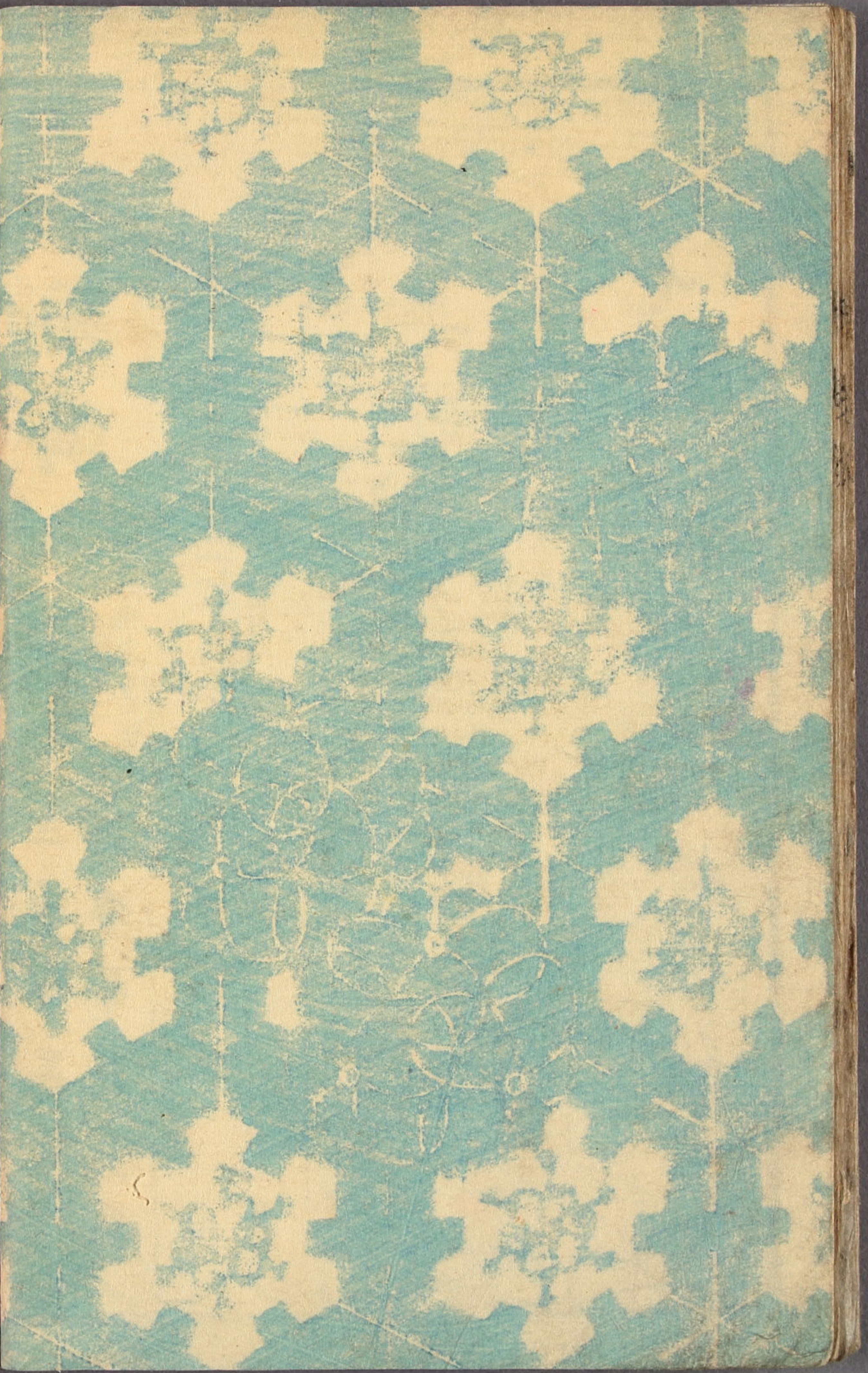
# 世々の恋慕

御色七情場

一色 四八銅  
一色 廿四銅

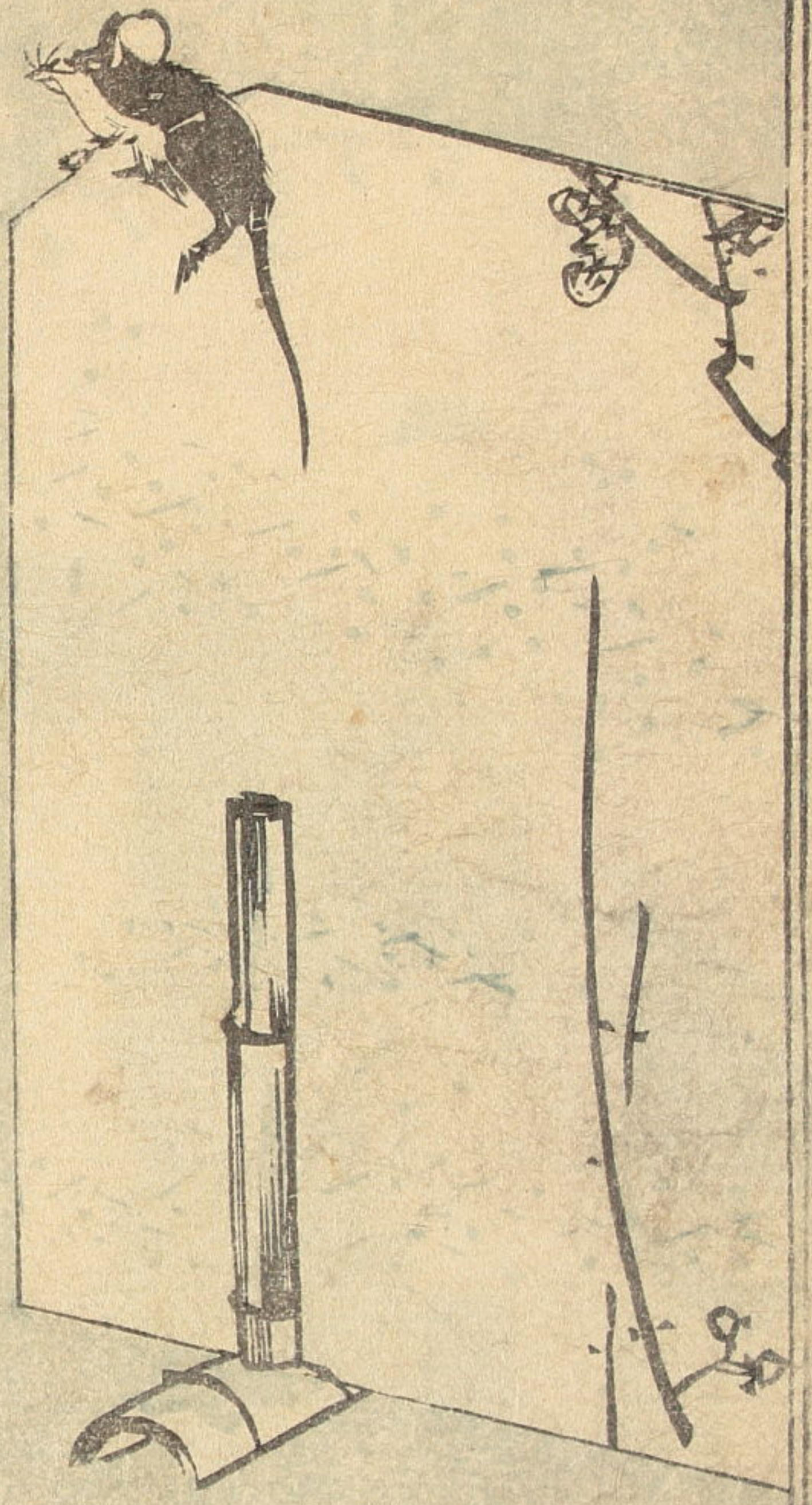


سخن در دهان  
سخن در دهان  
سخن در دهان





あまの涼衣高御衣  
 花本衣七柳縁  
 梅竹梅あはらるる



紅  
 英  
 卷  
 初海  
 下  
 卷



Handwritten text in the upper left corner, including the characters '三' and '四'.

Handwritten text in the middle left corner.

Handwritten text in the lower middle left corner.

Handwritten text in the lower left corner.

Handwritten text in the upper middle left area.

Handwritten text in the middle left area, surrounding the kneeling woman.

Handwritten text in the lower middle left area.

Handwritten text in the upper middle right area.

Handwritten text in the middle right area, surrounding the standing woman.

Handwritten text in the lower middle right area.

Handwritten text in the upper right corner.

Handwritten text in the middle right area, surrounding the standing woman.

Handwritten text in the lower right area.

Vertical text on the far right edge of the page.

Handwritten text in the middle right margin.

Small rectangular text block on the right side of the illustration.

Large circular seal on the standing woman's kimono, containing the character '行'.

Large circular seal on the kneeling woman's kimono, containing the character '林'.







雪のうららの山とまのちんちんもさう  
ゆうべのあれれとさうらうさうさ  
ゆふゆふのゆふゆふもさうさ  
そのさうさうさうさうさうさ



雪のうららの山とまのちんちんもさう  
ゆうべのあれれとさうらうさうさ  
ゆふゆふのゆふゆふもさうさ  
そのさうさうさうさうさうさ



雪のうららの山とまのちんちんもさう  
ゆうべのあれれとさうらうさうさ  
ゆふゆふのゆふゆふもさうさ  
そのさうさうさうさうさうさ

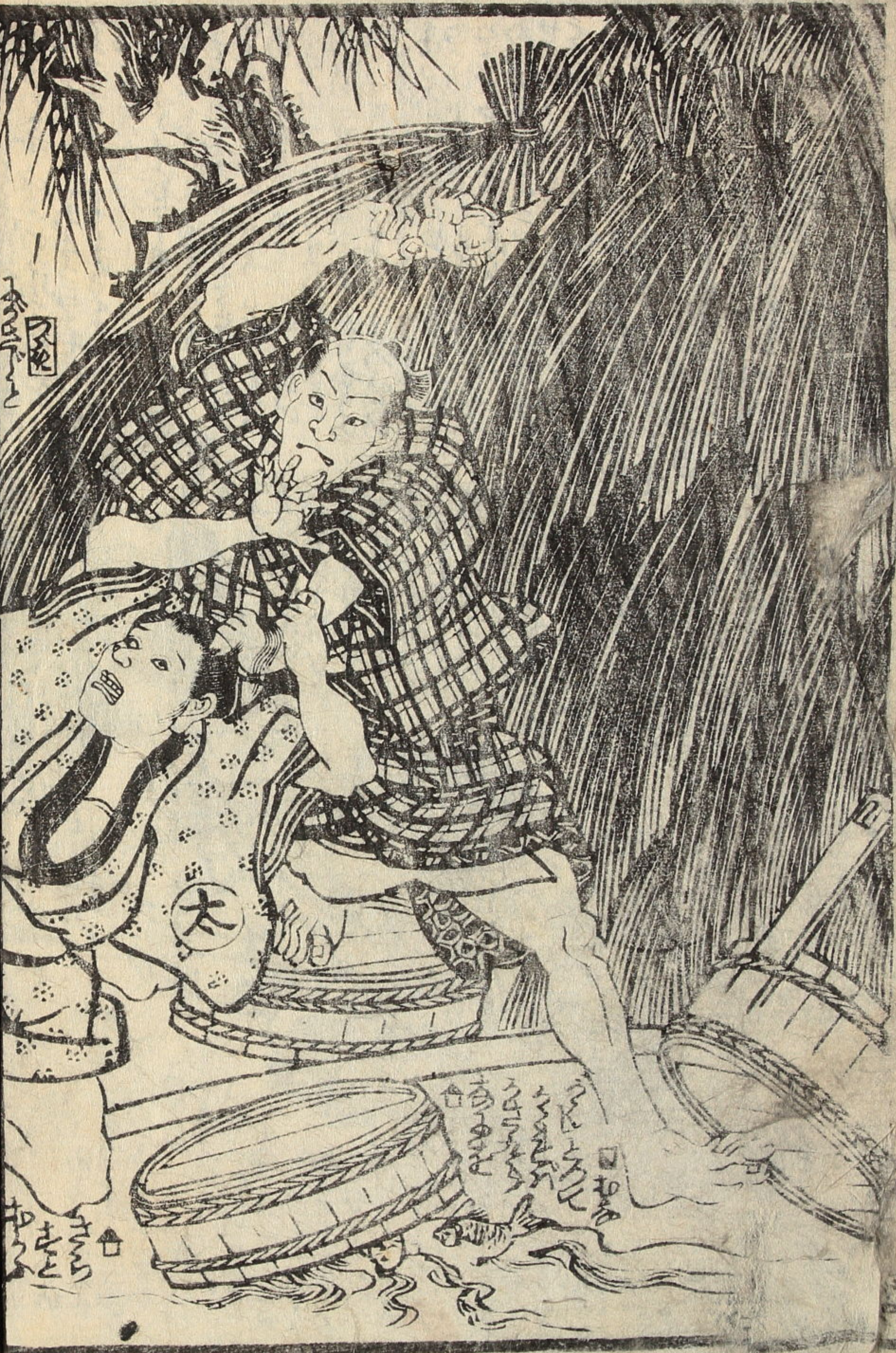
雪のうららの山とまのちんちんもさう  
ゆうべのあれれとさうらうさうさ  
ゆふゆふのゆふゆふもさうさ  
そのさうさうさうさうさうさ



雪のうららの山とまのちんちんもさう  
ゆうべのあれれとさうらうさうさ  
ゆふゆふのゆふゆふもさうさ  
そのさうさうさうさうさうさ



雪のうららの山とまのちんちんもさう  
ゆうべのあれれとさうらうさうさ  
ゆふゆふのゆふゆふもさうさ  
そのさうさうさうさうさうさ



魚  
 桶  
 太  
 木

太  
 木  
 魚  
 桶

太  
 木  
 魚  
 桶  
 太  
 木  
 魚  
 桶

太  
 木  
 魚  
 桶  
 太  
 木  
 魚  
 桶

太  
 木  
 魚  
 桶  
 太  
 木  
 魚  
 桶



Handwritten text in a cursive script, likely a transcription of a Japanese text, located at the top of the left page.

Handwritten text in a cursive script, located in the middle section of the left page, above the illustration.

Handwritten text in a cursive script, located at the bottom of the left page, below the illustration.



Handwritten text in a cursive script, located at the top of the right page.

Handwritten text in a cursive script, located in the middle section of the right page.

Handwritten text in a cursive script, located at the bottom of the right page.









萬延二年辛酉陽春開板標目

五柳綴國貞画



高嶋  
尾上  
おのゝこ  
あまのこ  
まろのこ  
おのゝこ  
あまのこ  
まろのこ  
おのゝこ  
あまのこ  
まろのこ

高嶋  
尾上  
おのゝこ  
あまのこ  
まろのこ

明鶴黒土画 通柄藩 春馬作 國貞画

童謡妙々車 春馬作 國貞画

大晦日曙草紙 春馬作 國貞画

花封蒼玉章 春馬作 國貞画

薄倂幻日記 春馬作 國貞画

地本草紙問屋 春馬作 國貞画

萬屋吉藏

