



川
水

特別
12
4435
22



Handwritten text in a cursive script, likely a historical document or manuscript. The text is written in a dark ink on aged paper. It consists of approximately 15 lines of text, with some words appearing to be in a different script or dialect than the surrounding text. The handwriting is fluid and somewhat slanted.

Handwritten text in a cursive script, likely a historical document or manuscript. The text is written in a dark ink on aged paper. It consists of approximately 15 lines of text, with some words appearing to be in a different script or dialect than the surrounding text. The handwriting is fluid and somewhat slanted. There are several small annotations or corrections in the text, some of which are written in a different script or dialect.

Handwritten text in Arabic script, consisting of approximately 15 lines of dense cursive writing.

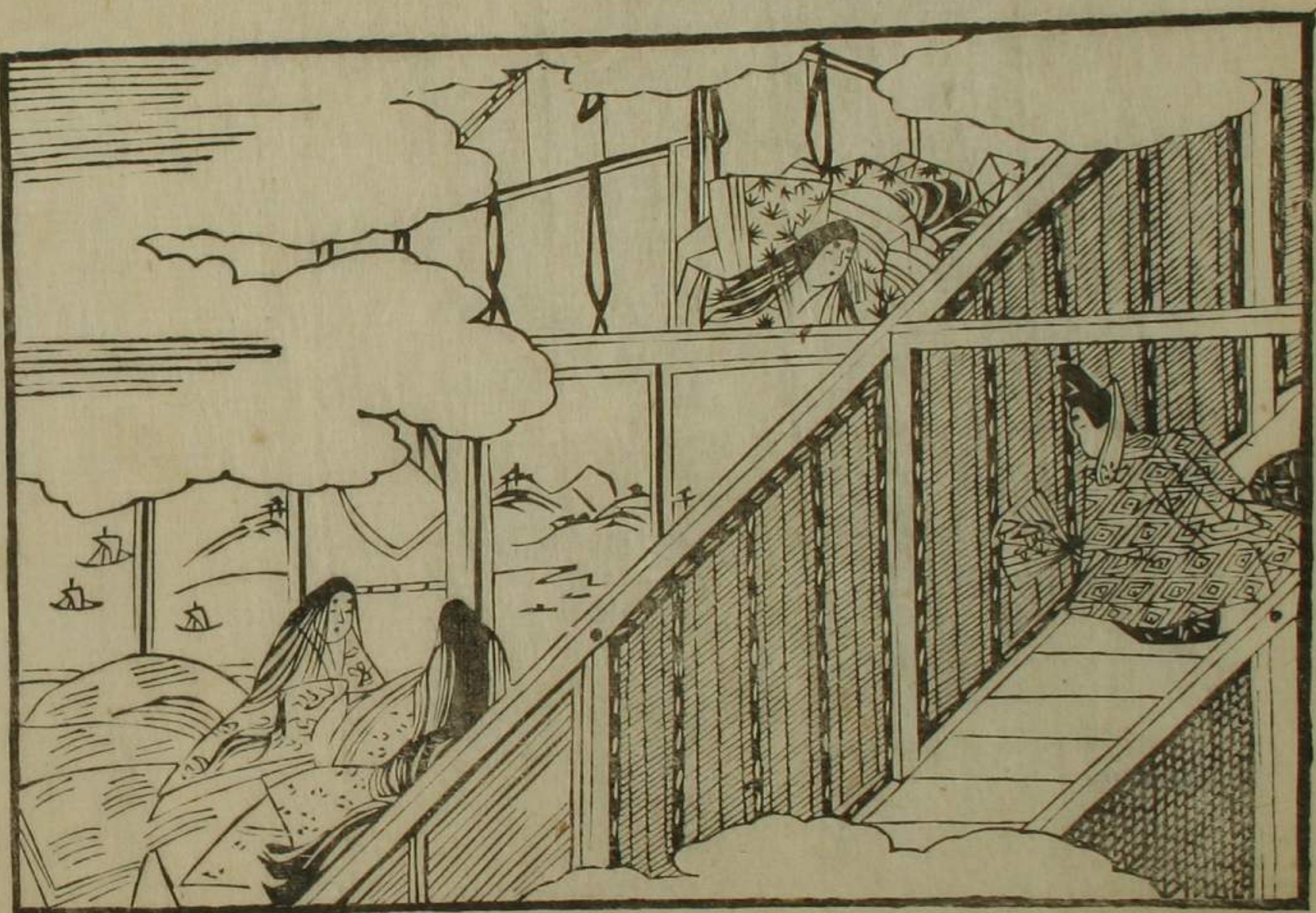
Handwritten text in Arabic script, consisting of approximately 15 lines of dense cursive writing.

Handwritten text in a cursive script, likely a historical document or manuscript. The text is written in a dark ink on aged paper. It consists of approximately 15 lines of text, with some words appearing to be in a different script or dialect, possibly indicating a mix of languages or a specific regional dialect. The handwriting is fluid and characteristic of the early modern period.

Handwritten text in a cursive script, continuing from the previous page. The text is written in a dark ink on aged paper. It consists of approximately 15 lines of text, with some words appearing to be in a different script or dialect, possibly indicating a mix of languages or a specific regional dialect. The handwriting is fluid and characteristic of the early modern period.

Handwritten text in Arabic script, likely a religious or philosophical treatise. The text is written in a cursive style and spans the entire page.

Handwritten text in Arabic script, likely a religious or philosophical treatise. The text is written in a cursive style and spans the entire page.



庭しゆがさてもまもるにあれば
 竹よふさぐられたしおちまへに流の
 うさあてのら二三のづらねはちよ
 ぢとそしりあゝ大空のうらまの流もあふ
 けよののぞくひのあまの
 きんぐんゆりかあまのなまよつげ
 みのあがれよさしとてうよれ
 のまのしりゆりからのほあまの
 人ちうまーとらあまのくち
 まいゆりかまのまのまのま
 とまのくちまのまのまのま
 こまのまのまのまのまのま
 ありしにいらあまのまのま
 まうてらあまのまのまのま
 ゆよゆまのまのまのまのま
 しりまのまのまのまのま

Handwritten text in a cursive script, likely a historical document or manuscript. The text is written in a dark ink on aged paper. It consists of approximately 15 lines of text, with some words written in a larger, bolder script. The text is arranged in a single column on the right page of the open book.

Handwritten text in a cursive script, likely a historical document or manuscript. The text is written in a dark ink on aged paper. It consists of approximately 15 lines of text, with some words written in a larger, bolder script. The text is arranged in a single column on the left page of the open book.

Handwritten text in a cursive script, likely a historical document or manuscript. The text is written in a dark ink on aged paper. It consists of approximately 15 lines of text, starting with a large initial letter. The script is highly stylized and difficult to decipher without a key.

Handwritten text in a cursive script, likely a historical document or manuscript. The text is written in a dark ink on aged paper. It consists of approximately 15 lines of text, starting with a large initial letter. The script is highly stylized and difficult to decipher without a key.

Handwritten text in a cursive script, likely a historical document or manuscript. The text is written in a dark ink on aged paper. It consists of approximately 15 lines of text, starting with a large initial character. The script is dense and characteristic of early modern European handwriting.

Handwritten text in a cursive script, continuing from the previous page. The text is written in a dark ink on aged paper. It consists of approximately 15 lines of text, starting with a large initial character. The script is dense and characteristic of early modern European handwriting.

Handwritten text in Arabic script, likely a manuscript or letter. The text is written in a cursive style and spans the entire page.

Handwritten text in Arabic script, likely a manuscript or letter. The text is written in a cursive style and spans the entire page.

Handwritten text in a cursive script, likely a historical document or manuscript. The text is written in a dark ink on aged paper. It consists of approximately 15 lines of text, starting with a large initial letter. The script is highly stylized and characteristic of early modern European handwriting.

Handwritten text in a cursive script, likely a historical document or manuscript. The text is written in a dark ink on aged paper. It consists of approximately 15 lines of text, starting with a large initial letter. The script is highly stylized and characteristic of early modern European handwriting.

Handwritten text in a cursive script, likely a historical document or manuscript. The text is written in a fluid, connected style across approximately 15 lines. Some characters are written in a slightly larger or bolder hand, possibly indicating emphasis or specific markers. The ink is dark and the paper shows signs of age.

Handwritten text in a cursive script, likely a historical document or manuscript. The text is written in a fluid, connected style across approximately 15 lines. Some characters are written in a slightly larger or bolder hand, possibly indicating emphasis or specific markers. The ink is dark and the paper shows signs of age.

Handwritten text in a cursive script, likely a historical document or manuscript. The text is written in a dark ink on aged paper. It consists of approximately 15 lines of text, starting with a large initial letter. The script is dense and characteristic of early modern European handwriting.

Handwritten text in a cursive script, likely a historical document or manuscript. The text is written in a dark ink on aged paper. It consists of approximately 15 lines of text, starting with a large initial letter. The script is dense and characteristic of early modern European handwriting.

Handwritten text in Arabic script, likely a religious or philosophical treatise. The text is written in a cursive style and spans the entire page.

Handwritten text in Arabic script, likely a religious or philosophical treatise. The text is written in a cursive style and spans the entire page.

Handwritten text in a cursive script, likely Persian or Arabic, covering the right page of the manuscript. The text is arranged in approximately 15 horizontal lines, flowing from right to left. Several characters are marked with small superscripts, possibly indicating specific phonetic or grammatical features. The ink is dark and the paper shows signs of age.

Handwritten text in a cursive script, likely Persian or Arabic, covering the left page of the manuscript. The text is arranged in approximately 15 horizontal lines, flowing from right to left. Several characters are marked with small superscripts, possibly indicating specific phonetic or grammatical features. The ink is dark and the paper shows signs of age.

Handwritten text in a cursive script, likely a historical document or manuscript. The text is written in a dark ink on aged paper. It consists of approximately 15 lines of text, starting with a large initial letter. The script is dense and characteristic of early modern European handwriting.

Handwritten text in a cursive script, likely a historical document or manuscript. The text is written in a dark ink on aged paper. It consists of approximately 15 lines of text, starting with a large initial letter. The script is dense and characteristic of early modern European handwriting.

لَا تَقْرَأُ فِيهَا كَلِمَاتٍ مِّنْهُنَّ لَآتِيَنَّكَ
بِهَا مَلَكٌ مُّقْرَّبٌ يُقْرَأُ عَلَيْهَا
بِحَقِّهَا وَأَتَىٰ بِهَا جِبْرَائِيلَ
بِهَا نَبِيًّا مِّنْ قَبْلِكَ لَقَدْ عَلِمْتُمُ
أَنَّكُمْ كُنْتُمْ فِيهَا رَاغِبِينَ
يَوْمَ تَأْتِي سَائِرَ الْمَلَكِ
مَعَهُمْ جِبْرَائِيلُ يُقْرَأُ
بِهَا وَالْمَلَكُ الْمُقْرَّبُ يُقْرَأُ
بِهَا بِحَقِّهَا وَأَتَىٰ بِهَا
جِبْرَائِيلَ بِهَا نَبِيًّا مِّنْ قَبْلِكَ
لَقَدْ عَلِمْتُمُ أَنَّكُمْ كُنْتُمْ فِيهَا
رَاغِبِينَ يَوْمَ تَأْتِي سَائِرَ الْمَلَكِ
مَعَهُمْ جِبْرَائِيلُ يُقْرَأُ بِهَا
وَالْمَلَكُ الْمُقْرَّبُ يُقْرَأُ بِهَا
بِحَقِّهَا وَأَتَىٰ بِهَا جِبْرَائِيلَ
بِهَا نَبِيًّا مِّنْ قَبْلِكَ لَقَدْ عَلِمْتُمُ
أَنَّكُمْ كُنْتُمْ فِيهَا رَاغِبِينَ

لَا تَقْرَأُ فِيهَا كَلِمَاتٍ مِّنْهُنَّ لَآتِيَنَّكَ
بِهَا مَلَكٌ مُّقْرَّبٌ يُقْرَأُ عَلَيْهَا
بِحَقِّهَا وَأَتَىٰ بِهَا جِبْرَائِيلَ
بِهَا نَبِيًّا مِّنْ قَبْلِكَ لَقَدْ عَلِمْتُمُ
أَنَّكُمْ كُنْتُمْ فِيهَا رَاغِبِينَ
يَوْمَ تَأْتِي سَائِرَ الْمَلَكِ
مَعَهُمْ جِبْرَائِيلُ يُقْرَأُ
بِهَا وَالْمَلَكُ الْمُقْرَّبُ يُقْرَأُ
بِهَا بِحَقِّهَا وَأَتَىٰ بِهَا
جِبْرَائِيلَ بِهَا نَبِيًّا مِّنْ قَبْلِكَ
لَقَدْ عَلِمْتُمُ أَنَّكُمْ كُنْتُمْ فِيهَا
رَاغِبِينَ يَوْمَ تَأْتِي سَائِرَ الْمَلَكِ
مَعَهُمْ جِبْرَائِيلُ يُقْرَأُ بِهَا
وَالْمَلَكُ الْمُقْرَّبُ يُقْرَأُ بِهَا
بِحَقِّهَا وَأَتَىٰ بِهَا جِبْرَائِيلَ
بِهَا نَبِيًّا مِّنْ قَبْلِكَ لَقَدْ عَلِمْتُمُ
أَنَّكُمْ كُنْتُمْ فِيهَا رَاغِبِينَ

Handwritten text in Arabic script, likely a religious or philosophical treatise. The text is written in a cursive style and spans the entire page. It begins with a large initial letter 'O' and contains several lines of text with some diacritics. The script is dense and fills the page from top to bottom.

Handwritten text in Arabic script, continuing from the previous page. The text is written in a cursive style and spans the entire page. It begins with a large initial letter 'O' and contains several lines of text with some diacritics. The script is dense and fills the page from top to bottom.

Handwritten text in Arabic script, likely a continuation of a letter or a chapter section. The text is written in a cursive style and spans the entire width of the page.

Handwritten text in Arabic script, likely a continuation of a letter or a chapter section. The text is written in a cursive style and spans the entire width of the page.

Handwritten text in a cursive script, likely a historical document or manuscript. The text is written in a dark ink on aged paper. It begins with a large initial letter, possibly 'S' or 'S', followed by several lines of text. The script is highly stylized and characteristic of the Ottoman or Persian calligraphic tradition. The text appears to be a formal document, possibly a decree or a record of a transaction, given the use of certain characters and the overall structure.

Handwritten text in a cursive script, likely a historical document or manuscript. The text is written in a dark ink on aged paper. It begins with a large initial letter, possibly 'S' or 'S', followed by several lines of text. The script is highly stylized and characteristic of the Ottoman or Persian calligraphic tradition. The text appears to be a formal document, possibly a decree or a record of a transaction, given the use of certain characters and the overall structure.

Handwritten text in a cursive script, likely a historical document or manuscript. The text is written in a dark ink on aged paper. It consists of approximately 15 lines of text, starting with a large initial letter. The script is dense and characteristic of early modern European handwriting.

Handwritten text in a cursive script, likely a historical document or manuscript. The text is written in a dark ink on aged paper. It consists of approximately 15 lines of text, starting with a large initial letter. The script is dense and characteristic of early modern European handwriting.

Handwritten text in a cursive script, likely a historical document or manuscript. The text is written in a fluid, connected style across approximately 15 lines. Some characters are written in a slightly larger or bolder hand, possibly indicating emphasis or specific terminology. The ink is dark and the paper shows signs of age.

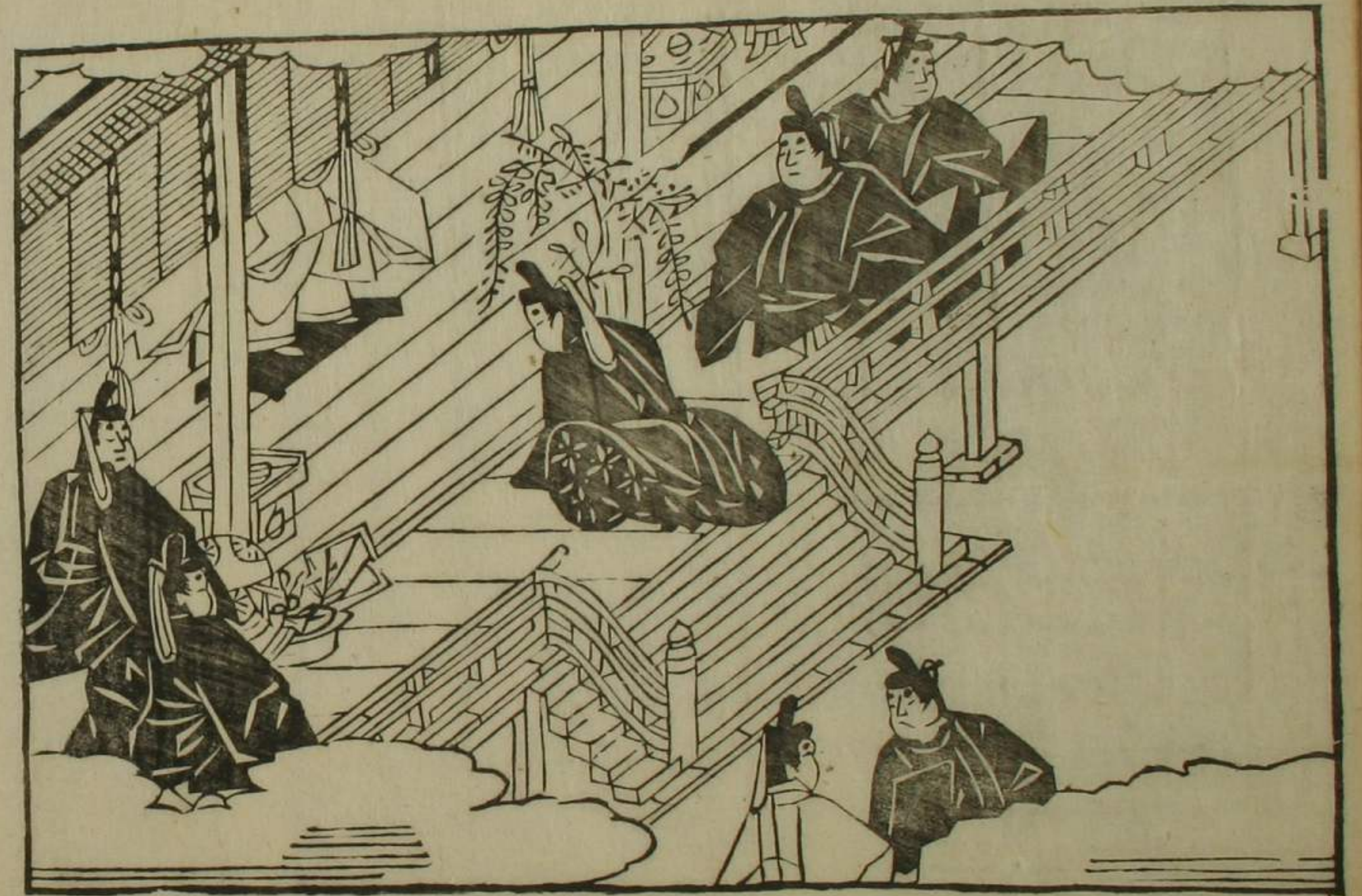
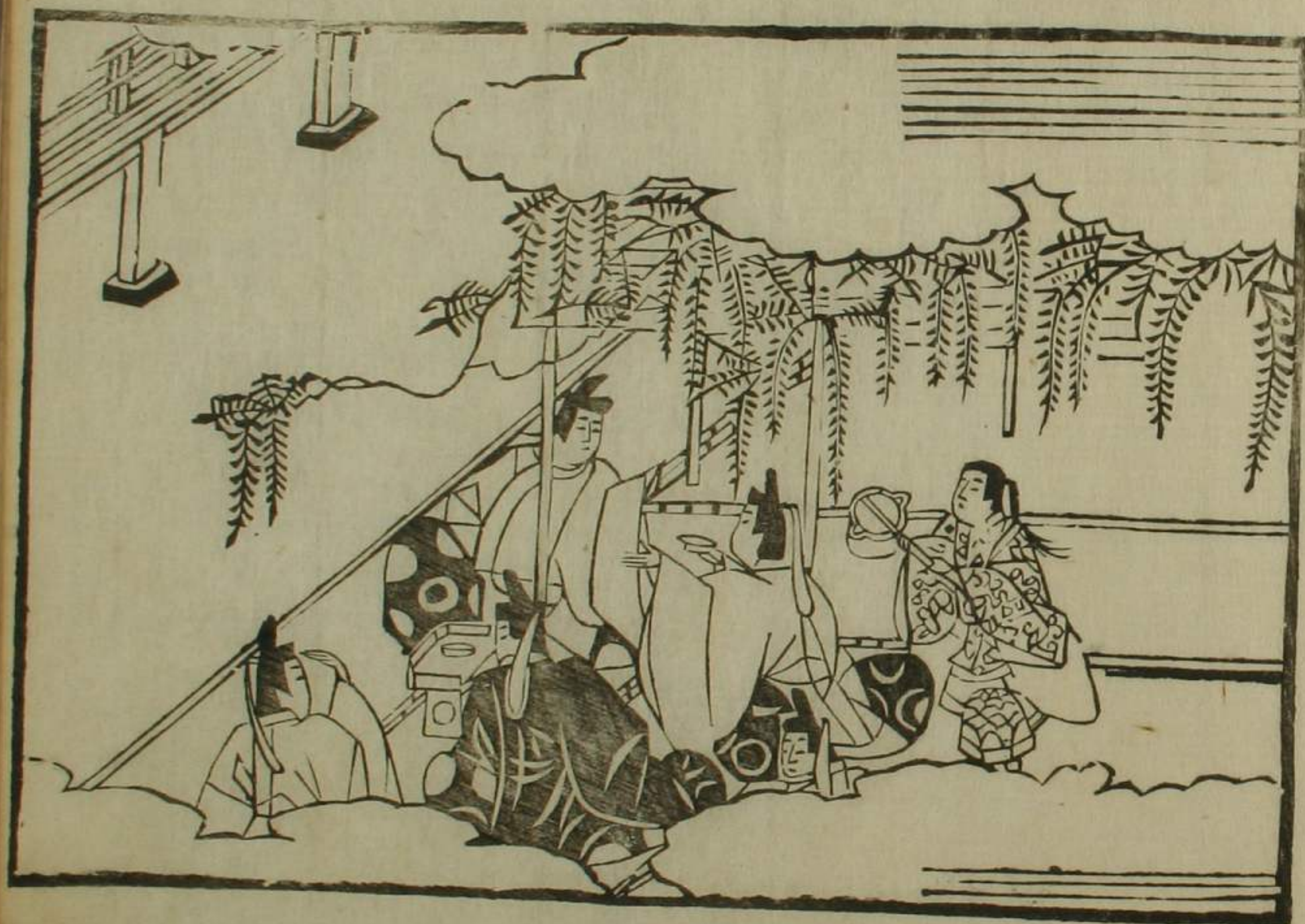
Handwritten text in a cursive script, continuing from the previous page. The text is written in a fluid, connected style across approximately 15 lines. Some characters are written in a slightly larger or bolder hand, possibly indicating emphasis or specific terminology. The ink is dark and the paper shows signs of age.

Handwritten text in a cursive script, likely a historical document or manuscript. The text is written in a dark ink on aged paper. It begins with a small heading or initial mark at the top left. The main body of text consists of several lines of dense, flowing script. There are some small, illegible markings or corrections interspersed throughout the text. The overall appearance is that of a well-preserved but aged piece of paper.

Handwritten text in a cursive script, continuing from the previous page. The text is written in a dark ink on aged paper. It begins with a small heading or initial mark at the top left. The main body of text consists of several lines of dense, flowing script. There are some small, illegible markings or corrections interspersed throughout the text. The overall appearance is that of a well-preserved but aged piece of paper.

Handwritten text in a cursive script, likely a historical document or manuscript. The text is written in a dark ink on aged paper. It consists of approximately 15 lines of text, with some lines starting with a large initial letter. The script is dense and characteristic of early modern European handwriting.

Handwritten text in a cursive script, likely a historical document or manuscript. The text is written in a dark ink on aged paper. It consists of approximately 15 lines of text, with some lines starting with a large initial letter. The script is dense and characteristic of early modern European handwriting.



Handwritten text in Arabic script, consisting of approximately 15 lines of dense cursive script.

四十九卷九十一條

Handwritten text in Arabic script, consisting of approximately 10 lines of dense cursive script.

