

夕立利  
御のり  
まじり  
大

特別  
12  
4435  
18









Handwritten text in a cursive script, likely a historical document or letter. The text is written in a fluid, connected style. There are several lines of text, with some words appearing to be in a different script or dialect. A small vertical mark is visible near the top right of the page.

Handwritten text in a cursive script, continuing from the previous page. The text is written in a fluid, connected style. There are several lines of text, with some words appearing to be in a different script or dialect. A small vertical mark is visible near the top right of the page.











Handwritten text in a cursive script, likely a historical document or manuscript. The text is written in a dark ink on aged, yellowish paper. It consists of approximately 15 lines of text, with some lines starting with a small decorative flourish or initial. The script is dense and flowing, characteristic of early modern cursive handwriting.

Handwritten text in a cursive script, continuing from the previous page. The text is written in a dark ink on aged, yellowish paper. It consists of approximately 15 lines of text, with some lines starting with a small decorative flourish or initial. The script is dense and flowing, characteristic of early modern cursive handwriting.

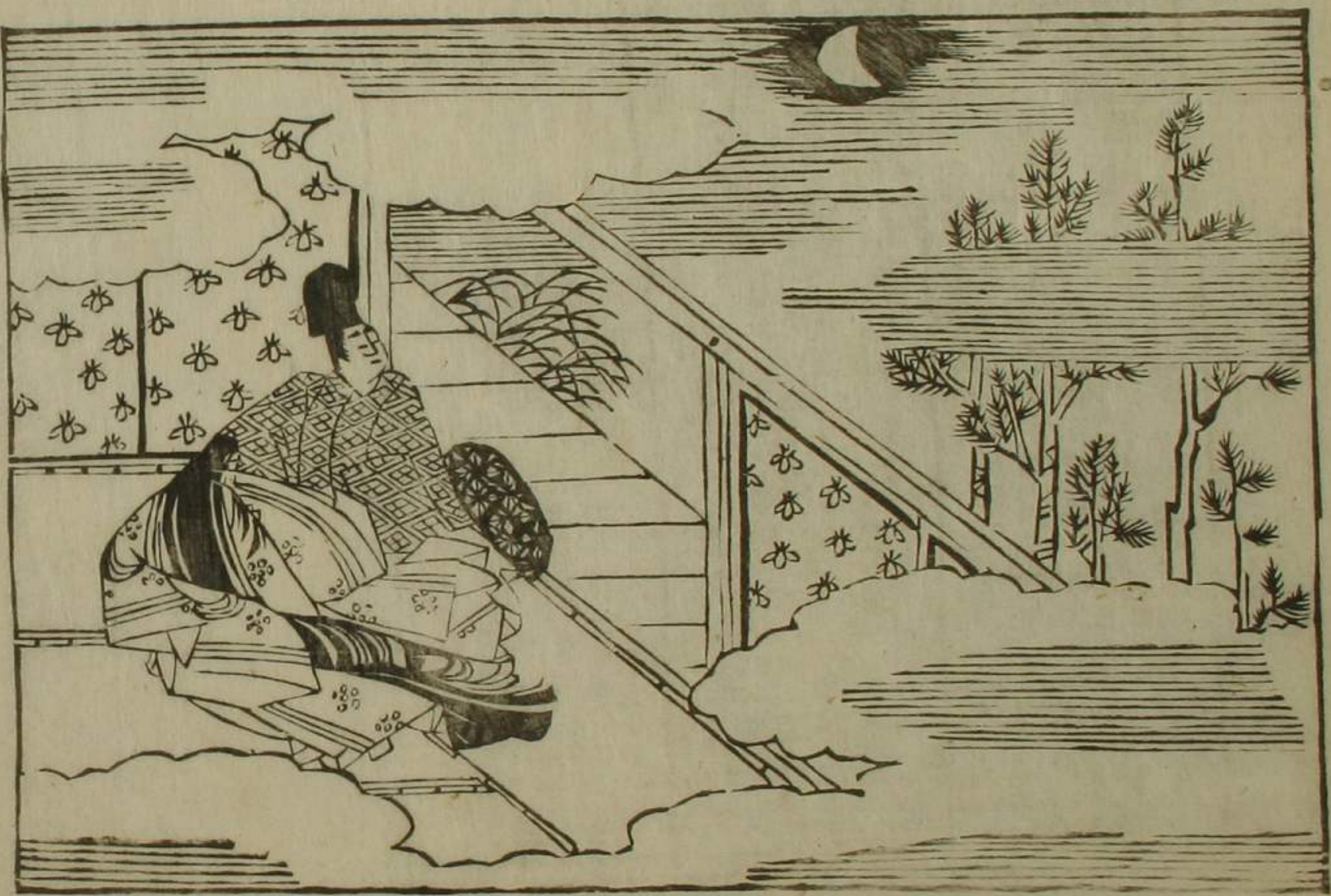




Handwritten text in a cursive script, likely a historical document or manuscript. The text is written in a fluid, connected style. Several small characters are written above the main lines of text, possibly serving as annotations or corrections. The ink is dark and the paper shows signs of age.

Handwritten text in a cursive script, continuing from the previous page. The script is consistent with the one on the left page. Like the previous page, it features several small characters written above the main lines of text. The overall appearance is that of a well-preserved historical manuscript.





月もあざむらうのありさうはひ  
 花もぬはらうありさうはひ  
 一もあざむらうのありさうはひ  
 素のくみわれとあわしとさあめ  
 結ぬべれが夫桑院のひんぐりの  
 ねていよあざむらうのありさうはひ  
 つもそれさうしていよあざむらう  
 ともあざむらうのありさうはひ  
 ちりりといよあざむらうのありさうはひ  
 うらやすいよあざむらうのありさうはひ  
 のよあざむらうのありさうはひ  
 さのいよあざむらうのありさうはひ  
 とらうていよあざむらうのありさうはひ  
 花もあざむらうのありさうはひ  
 月もあざむらうのありさうはひ  
 はわさういよあざむらうのありさうはひ













結とさつりやる<sup>あま</sup>つり結りんとん  
 吹ひいびのあれもつれらるひさ  
 びくろひひよくのほぞほこちび  
 みこさくちど〜<sup>たふ</sup>たふも〜  
 にもさう〜<sup>小見本</sup>つれを<sup>たふ</sup>たふ人ごもつ  
 にもあもらん<sup>小見本</sup>さあつり結りて後  
 にもさう〜さあつりあらんよれ  
 ちてさ〜さあつりあらん  
 もさ〜さあつりあらん  
 ねらりのさ〜さあつりあらん  
 がさ〜さあつりあらん  
 あもさ〜さあつりあらん  
 けりこら〜さあつりあらん  
 よお<sup>地</sup>な〜さあつりあらん  
 ともはけさあつりあらん<sup>かわま</sup>あつりあらん  
 のほ〜ほのあ〜さあつりあらん

さあつりあらん〜さあつりあらん  
 まんれあつりのさ〜さあつりあらん  
 ねらりのさ〜さあつりあらん  
 がさ〜さあつりあらん  
 あもさ〜さあつりあらん  
 けりこら〜さあつりあらん  
 よお<sup>地</sup>な〜さあつりあらん  
 ともはけさあつりあらん<sup>かわま</sup>あつりあらん  
 のほ〜ほのあ〜さあつりあらん  
 さあつりあらん〜さあつりあらん  
 まんれあつりのさ〜さあつりあらん  
 ねらりのさ〜さあつりあらん  
 がさ〜さあつりあらん  
 あもさ〜さあつりあらん  
 けりこら〜さあつりあらん  
 よお<sup>地</sup>な〜さあつりあらん  
 ともはけさあつりあらん<sup>かわま</sup>あつりあらん  
 のほ〜ほのあ〜さあつりあらん





Handwritten text in a cursive script, likely a historical document or manuscript. The text is written in a dark ink on aged paper. It consists of several lines of text, with some words or phrases written in a different script or language, possibly indicating a specific location or event. The text is somewhat faded and difficult to read in some places.

Handwritten text in a cursive script, likely a historical document or manuscript. The text is written in a dark ink on aged paper. It consists of several lines of text, with some words or phrases written in a different script or language, possibly indicating a specific location or event. The text is somewhat faded and difficult to read in some places.





Handwritten text in a cursive script, likely a historical document or manuscript. The text is written in a dark ink on aged paper. It consists of approximately 15 lines of text, with some words written in a larger, bolder script, possibly indicating emphasis or specific terms. The script is dense and characteristic of early modern European handwriting.

Handwritten text in a cursive script, likely a historical document or manuscript. The text is written in a dark ink on aged paper. It consists of approximately 15 lines of text, with some words written in a larger, bolder script, possibly indicating emphasis or specific terms. The script is dense and characteristic of early modern European handwriting.

Handwritten text in a cursive script, likely a historical document or manuscript. The text is written in a dark ink on aged, yellowish paper. It consists of approximately 15 lines of text, with some lines starting with a dash or a small mark. The script is dense and flowing, characteristic of early modern European handwriting. There are several small annotations or corrections written above certain words, such as "木" (tree) and "文" (text).

と酒をそがせよとてひらきぬ  
しちやましとてお茶もよそよ  
わりもいれぬがくはくそいひ  
あまぶらうありとんとのほろがら  
まらげちられぬがくはくそいひ  
うらりそがりとすはぬじえぞ  
れとをばけぬがくはくそいひ  
よあやまらぬくちやうそいひ  
あらぬがくはくそいひ  
えまんとていひぬがくはくそいひ  
がこれとていひぬがくはくそいひ  
まらうちの世人よあまぶらうそいひ  
中いづらとていひぬがくはくそいひ  
しとあやまらぬがくはくそいひ  
のほろがらとていひぬがくはくそいひ  
れぬがくはくそいひ

ひとていひぬがくはくそいひ  
始りぬがくはくそいひ  
まらうちの世人よあまぶらうそいひ  
中いづらとていひぬがくはくそいひ  
しとあやまらぬがくはくそいひ  
のほろがらとていひぬがくはくそいひ  
れぬがくはくそいひ  
あまぶらうありとんとのほろがら  
まらげちられぬがくはくそいひ  
うらりそがりとすはぬじえぞ  
れとをばけぬがくはくそいひ  
よあやまらぬくちやうそいひ  
あらぬがくはくそいひ  
えまんとていひぬがくはくそいひ  
がこれとていひぬがくはくそいひ  
まらうちの世人よあまぶらうそいひ  
中いづらとていひぬがくはくそいひ  
しとあやまらぬがくはくそいひ  
のほろがらとていひぬがくはくそいひ  
れぬがくはくそいひ

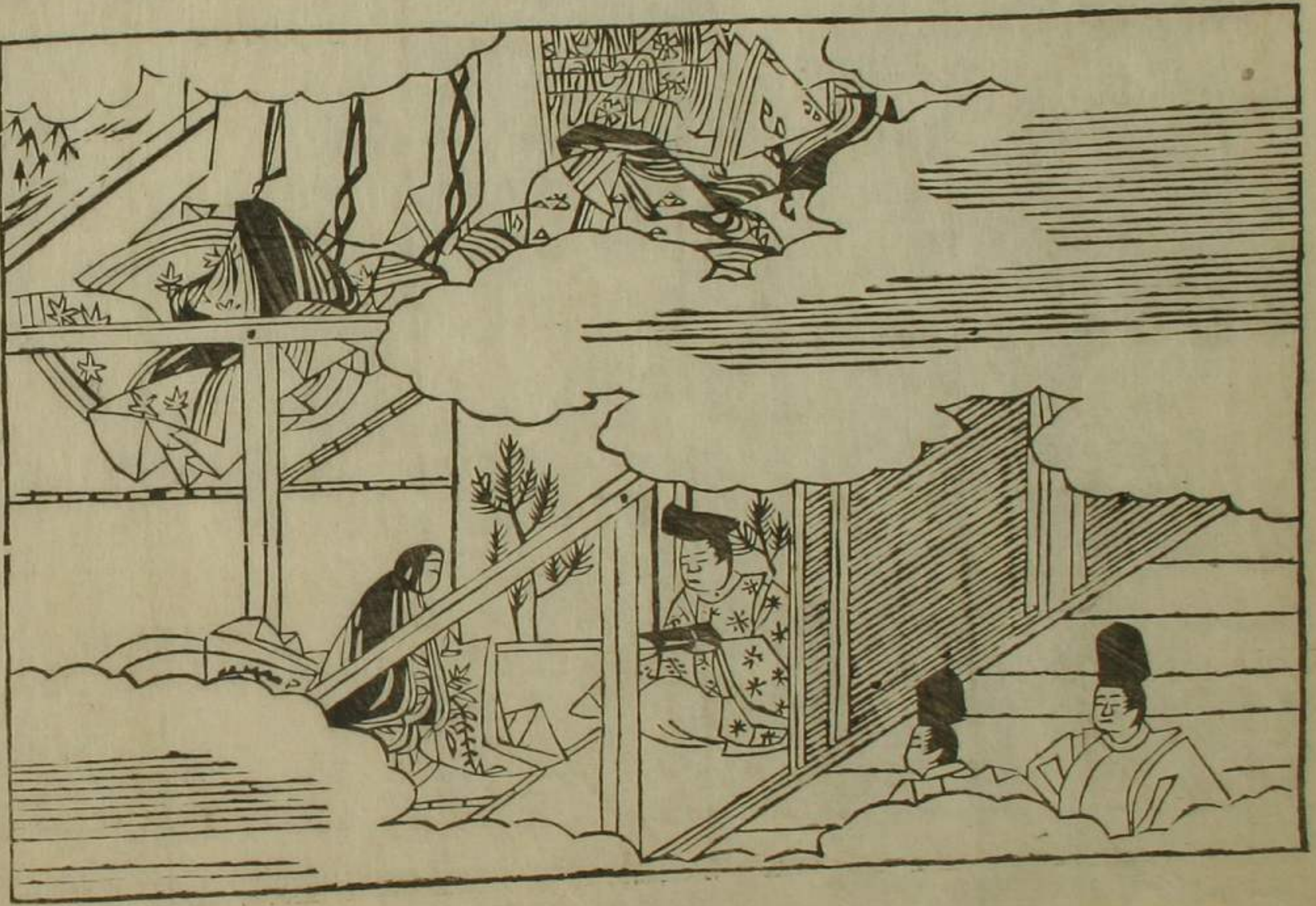












とらほけくりかへしけんまな  
わ〜みくひんひのいゝあまのまひ  
ぞうぬらうりしらくちせんま  
あまのまひりかへしけんま  
〜いざなひとせんまのまひ  
りくちのりかへしけんまのまひ  
きういゝとせんまのりかへしけんま  
かやういゝとせんまのりかへしけんま  
法のりかへしけんまのりかへしけんま  
かやういゝとせんまのりかへしけんま  
ちのまひりかへしけんまのりかへしけんま  
〜いざなひとせんまのりかへしけんま  
のりかへしけんまのりかへしけんま  
たおれまうぢうりやう〜とせんまのりかへしけんま  
さめせまうぢうりやう〜とせんまのりかへしけんま  
らりまぢうりやう〜とせんまのりかへしけんま





Handwritten text in a cursive script, likely a historical document or manuscript. The text is written in a dark ink on aged, yellowish paper. The script is dense and fills most of the page. There are several instances of small, handwritten annotations or corrections in a different script, possibly Arabic or Persian, interspersed within the main text. The text appears to be a continuous narrative or record, with some lines starting with capital letters or specific symbols. The overall appearance is that of a well-used, historical manuscript.

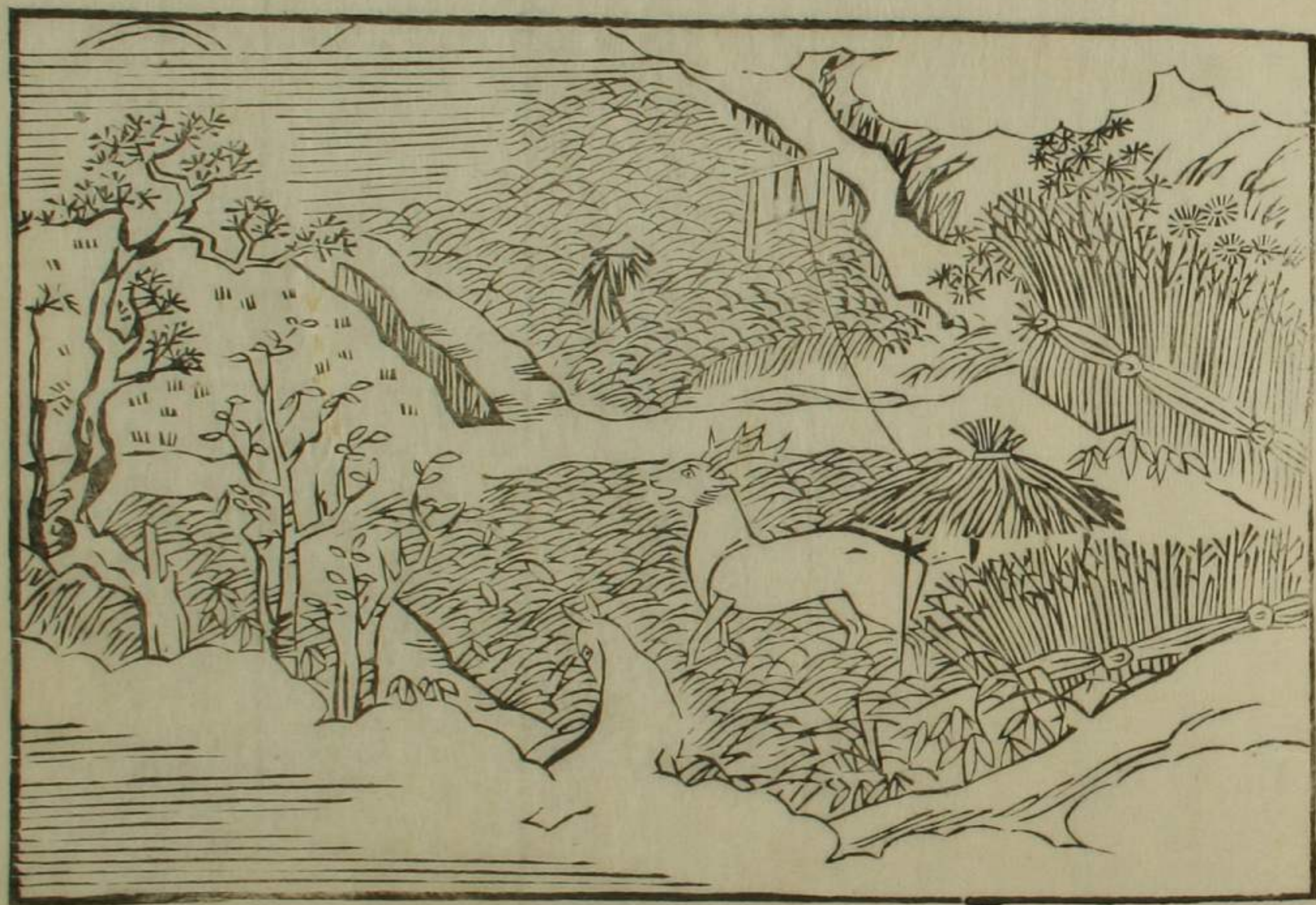


Handwritten text in a cursive script, likely a historical document or manuscript. The text is written in a dark ink on aged, yellowish paper. The script is dense and fills most of the page. There are several lines of text, with some words appearing to be in a different language or dialect than others, possibly indicating a mix of languages or a specific regional dialect. The text is written in a consistent, flowing style, characteristic of historical cursive handwriting.















Handwritten text in a cursive script, likely a historical document or manuscript. The text is written in a dark ink on aged, yellowish paper. The script is dense and fills most of the page. There are several small annotations or corrections written in a different, smaller script, possibly a later hand or a specific dialect, interspersed within the main text. These annotations are often placed above or below the main lines of writing. The overall appearance is that of a well-used, possibly legal or administrative, record from a past era.

Handwritten text in a cursive script, likely a historical document or manuscript. The text is written on two pages of aged paper, with some words and phrases appearing to be in a non-Latin script, possibly Arabic or Persian. The handwriting is dense and fills most of both pages. There are several small annotations or corrections written above the main lines of text. The paper shows signs of age, including some staining and discoloration.

Handwritten text in a cursive script, likely a historical document or letter. The text is written in a dark ink on aged paper. It begins with a large initial letter, possibly 'K', and continues with several lines of text. The script is dense and characteristic of early modern European handwriting.

Handwritten text in a cursive script, likely a historical document or letter. The text is written in a dark ink on aged paper. It begins with a large initial letter, possibly 'K', and continues with several lines of text. The script is dense and characteristic of early modern European handwriting. There are some small annotations or corrections in the text, such as 'K. 12' and 'K. 13'.





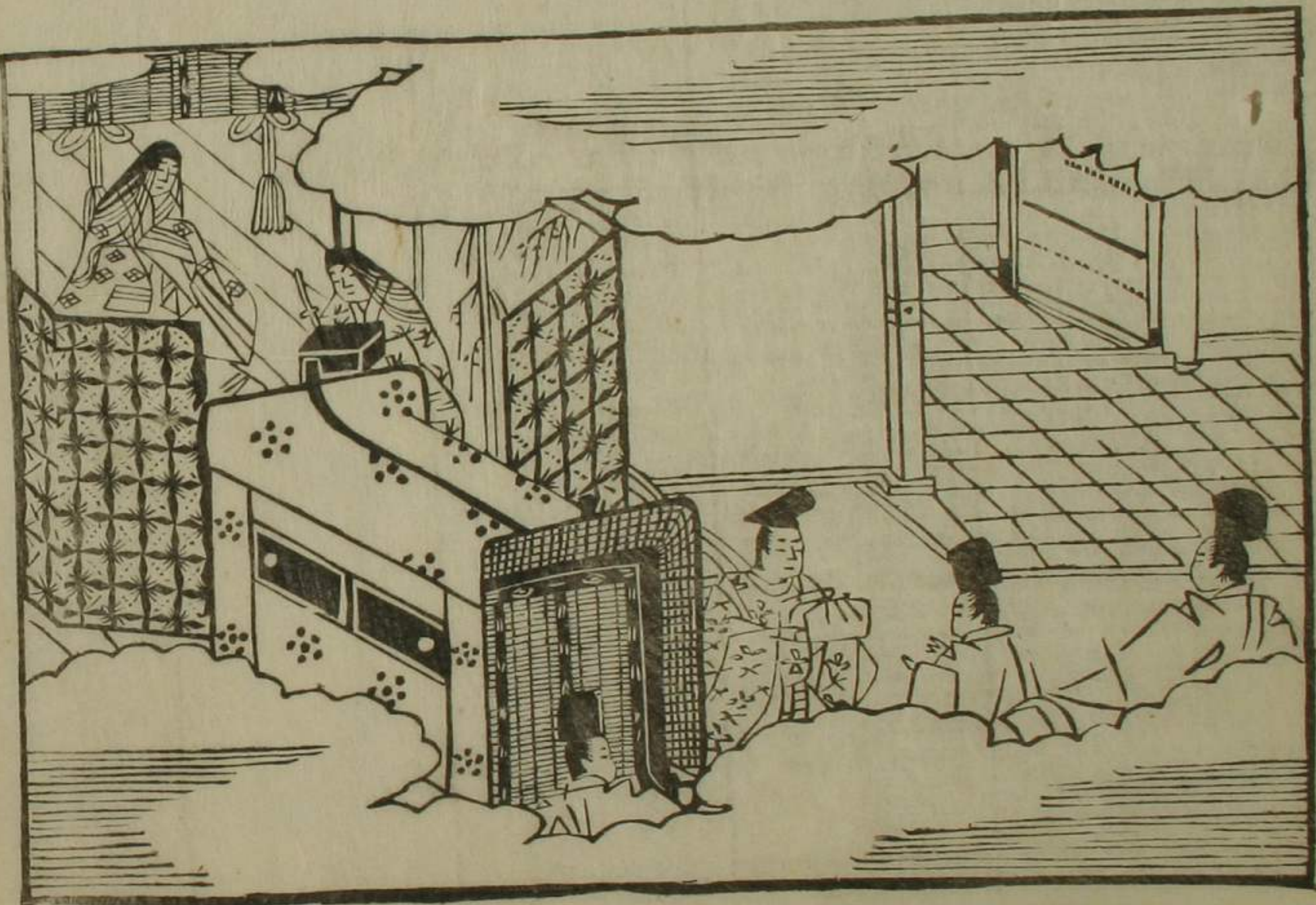




Handwritten text in a cursive script, likely a letter or a page from a diary. The text is written in a fluid, connected style. There are several lines of text, with some words appearing to be in a different language or dialect than the surrounding text. The ink is dark and the paper shows signs of age.

Handwritten text in a cursive script, continuing from the previous page. The text is written in a fluid, connected style. There are several lines of text, with some words appearing to be in a different language or dialect than the surrounding text. The ink is dark and the paper shows signs of age.





おり... せん... の...  
 一...  
 海...  
 波...  
 と...  
 と...  
 う...  
 の...  
 ま...  
 の...  
 ま...  
 ひ...  
 ひ...



Handwritten text in a cursive script, likely a historical document or manuscript. The text is written on two pages of aged paper. The script is dense and fills most of the page area. There are several small annotations or corrections written above the main lines of text, including the characters "あまふん" and "あまふん". The text appears to be a continuous narrative or record, possibly related to a specific event or location, as suggested by the word "園" (garden) visible in the lower portion of the right page.

Handwritten text in a cursive script, likely a historical document or manuscript. The text is arranged in approximately 15 lines across the page. The script is dense and characteristic of early modern European handwriting. There are several instances of small, handwritten annotations or corrections in red ink, which appear to be initials or short words. The paper shows signs of age, including slight discoloration and wear at the edges. The text is written in a dark ink, possibly iron gall or a similar historical ink.



Handwritten text in a cursive script, likely a historical document or manuscript. The text is written in a dark ink on aged, yellowish paper. The script is dense and fills most of the page. There are several lines of text, with some words appearing to be in a different language or dialect than others, possibly indicating a mix of languages or a specific regional dialect. The text is written in a cursive style, with many loops and flourishes. Some words are written in a more formal, upright style, while others are more slanted or horizontal. The overall appearance is that of a personal or official record from a past era.







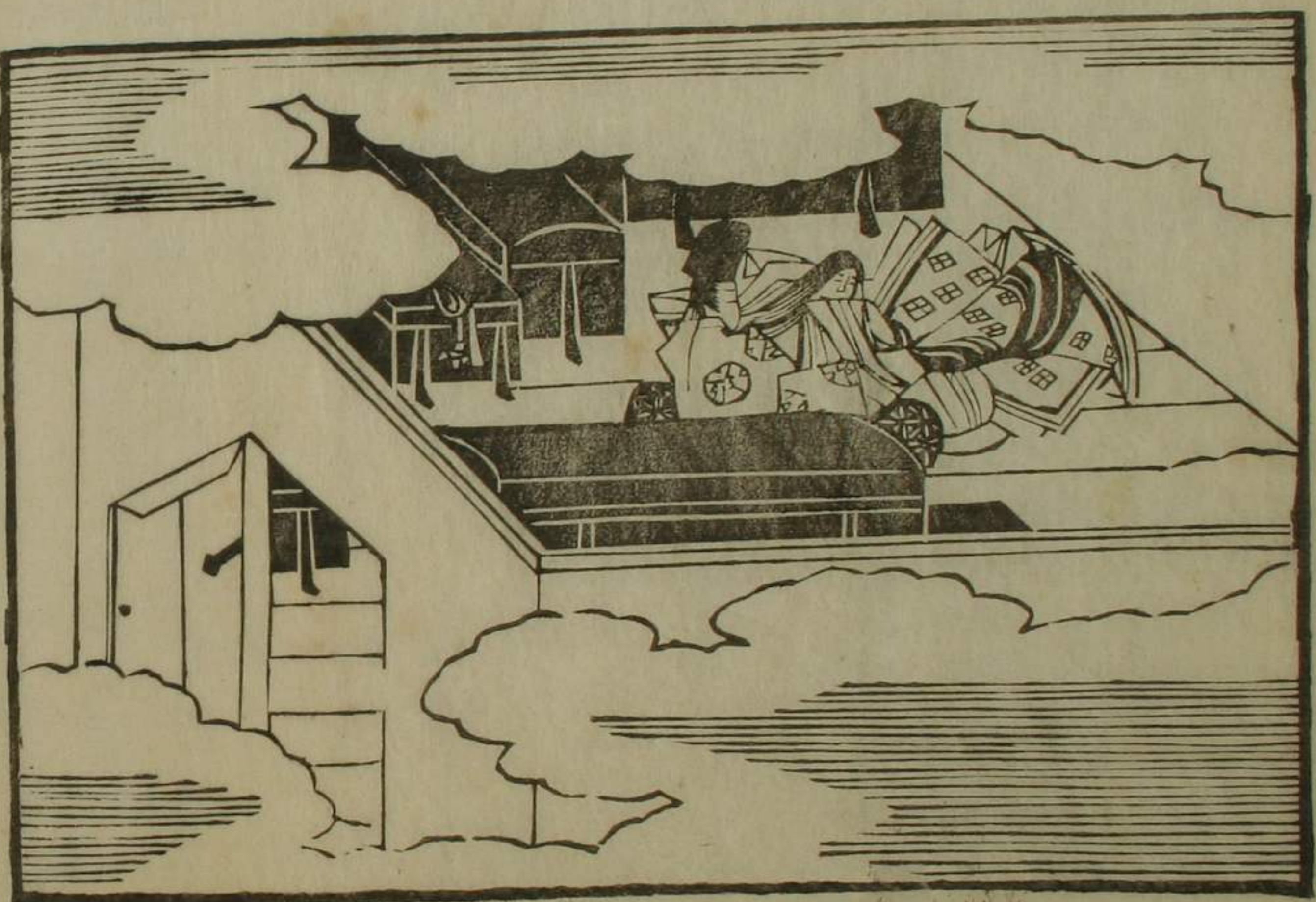


Handwritten text in a cursive script, likely a historical document or manuscript. The text is arranged in approximately 15 lines across the page. The script is dense and characteristic of early modern European handwriting. The document appears to be a page from a larger book or manuscript, with some ink bleed-through visible from the reverse side. The text is written in a dark ink on aged, slightly yellowed paper. The lines of text are closely spaced and run horizontally across the page. There are some variations in the thickness of the lines, suggesting the use of a quill pen. The overall appearance is that of a well-preserved historical document.



Handwritten text in a cursive script, likely a historical document or manuscript. The text is written in a dark ink on aged, yellowish paper. It consists of approximately 15 lines of text, with some lines starting with a large initial letter. The script is highly stylized and difficult to decipher without a key. There are several small annotations or corrections written above certain lines of text. The overall appearance is that of a well-preserved but aged historical document.





此は  
1  
2  
3  
4  
5  
6  
7  
8  
9  
10  
11  
12  
13  
14  
15  
16  
17  
18  
19  
20  
21  
22  
23  
24  
25  
26  
27  
28  
29  
30  
31  
32  
33  
34  
35  
36  
37  
38  
39  
40  
41  
42  
43  
44  
45  
46  
47  
48  
49  
50  
51  
52  
53  
54  
55  
56  
57  
58  
59  
60  
61  
62  
63  
64  
65  
66  
67  
68  
69  
70  
71  
72  
73  
74  
75  
76  
77  
78  
79  
80  
81  
82  
83  
84  
85  
86  
87  
88  
89  
90  
91  
92  
93  
94  
95  
96  
97  
98  
99  
100

Handwritten text in a cursive script, likely a diary or journal entry. The text is written on two pages of aged paper. The right page contains approximately 12 lines of text, and the left page contains approximately 12 lines. The script is dense and flowing, with some words or phrases written in a slightly larger or bolder hand, possibly indicating emphasis or specific terms. The paper shows signs of age, including yellowing and some minor staining.

Handwritten text in a cursive script, likely a diary or journal entry. The text is written on two pages of aged paper. The right page contains approximately 12 lines of text, and the left page contains approximately 12 lines. The script is dense and flowing, with some words or phrases written in a slightly larger or bolder hand, possibly indicating emphasis or specific terms. The paper shows signs of age, including yellowing and some minor staining.



ゆがうあぢこまやねればんのCantata

かんまろくくしにたけりなりこの

ちとてびんたてけんりころりん

らうてびんたてけんりころりん

えりこのしんけんけんけんけん

ちちちちちちちちちちちちちち

ちちちちちちちちちちちちちち

ちちちちちちちちちちちちちち

このまじらちちちちちちちちち

てしちちちちちちちちちちちちち

ちちちちちちちちちちちちちち

ちちちちちちちちちちちちちち

ちちちちちちちちちちちちちち

ちちちちちちちちちちちちちち

ちちちちちちちちちちちちちち

ちちちちちちちちちちちちちち

ちちちちちちちちちちちちちち

ちちちちちちちちちちちちちち

ちちちちちちちちちちちちちち

ちちちちちちちちちちちちちち

ちちちちちちちちちちちちちち

ちちちちちちちちちちちちちち

ちちちちちちちちちちちちちち

ちちちちちちちちちちちちちち

ちちちちちちちちちちちちちち

ちちちちちちちちちちちちちち

ちちちちちちちちちちちちちち

ちちちちちちちちちちちちちち

ちちちちちちちちちちちちちち

ちちちちちちちちちちちちちち

ちちちちちちちちちちちちちち

ちちちちちちちちちちちちちち

ちちちちちちちちちちちちちち





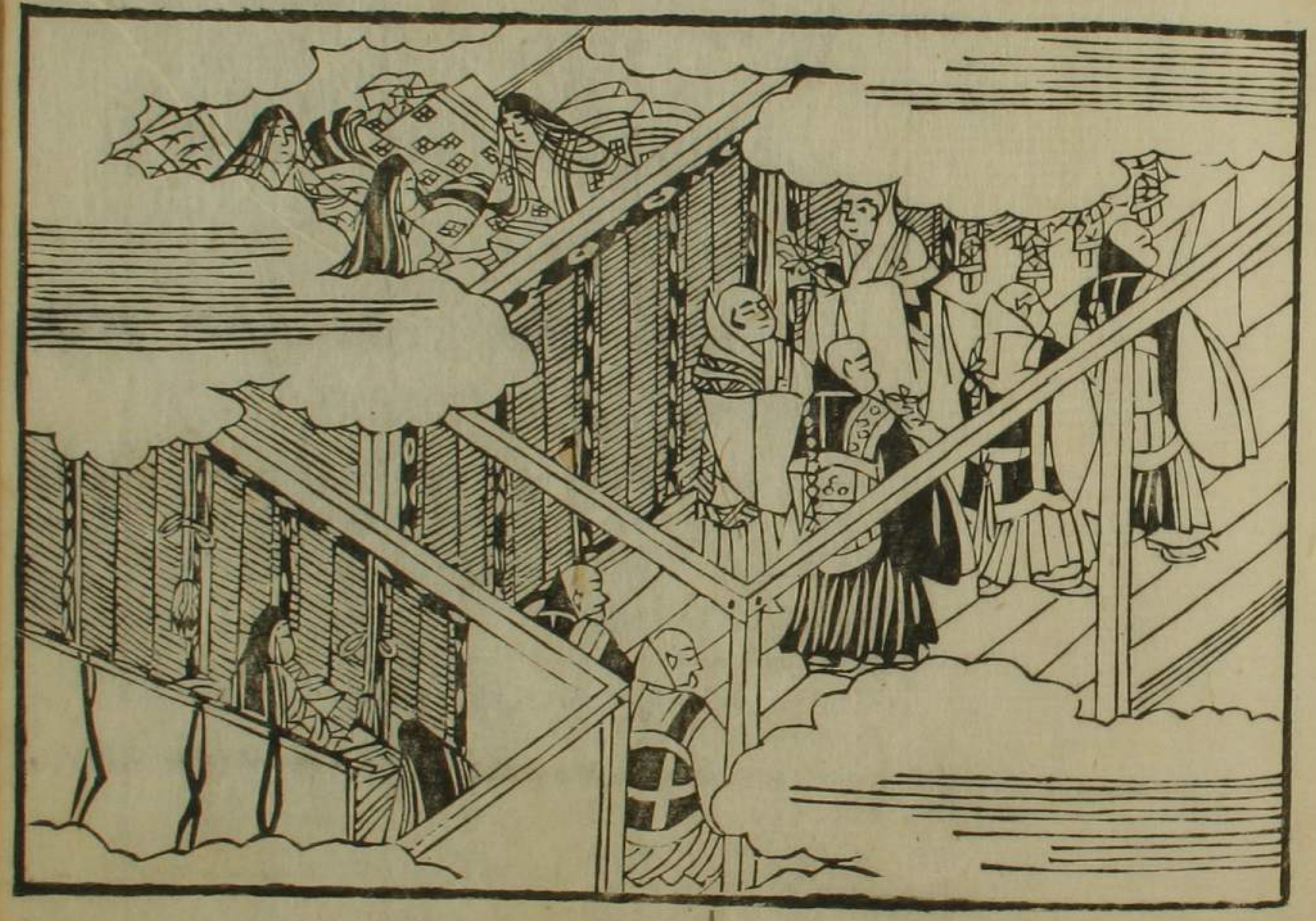








ねんぢあるあつめは海をゆくが  
 さいちりもていなるやうにた  
 ちかへんくさくさくさくさく  
 けいなるまじりのまじり  
 ついでにまじりまじりまじり  
 うらやまよまじりまじりまじり  
 ちかよまじりまじりまじり  
 ちりてまじりまじりまじり  
 のちかまじりまじりまじり  
 ちかまじりまじりまじり  
 ねんぢあるあつめは海をゆく





بِسْمِ اللَّهِ الرَّحْمَنِ الرَّحِيمِ  
الحمد لله الذي هدانا لهذا  
الذي كنا لنهتدي لولا أن هدانا  
الله لولم يكن الله ذو فضل  
على العباد  
الحمد لله الذي هدانا لهذا  
الذي كنا لنهتدي لولا أن هدانا  
الله لولم يكن الله ذو فضل  
على العباد  
الحمد لله الذي هدانا لهذا  
الذي كنا لنهتدي لولا أن هدانا  
الله لولم يكن الله ذو فضل  
على العباد

الحمد لله الذي هدانا لهذا  
الذي كنا لنهتدي لولا أن هدانا  
الله لولم يكن الله ذو فضل  
على العباد  
الحمد لله الذي هدانا لهذا  
الذي كنا لنهتدي لولا أن هدانا  
الله لولم يكن الله ذو فضل  
على العباد  
الحمد لله الذي هدانا لهذا  
الذي كنا لنهتدي لولا أن هدانا  
الله لولم يكن الله ذو فضل  
على العباد

Handwritten text in a cursive script, likely a historical document or manuscript. The text is written in a dark ink on aged, yellowish paper. It consists of approximately 15 lines of text, with some lines starting with a large initial letter. There are several small annotations or corrections written in a different, smaller script interspersed within the main text.

Handwritten text in a cursive script, likely a historical document or manuscript. The text is written in a dark ink on aged, yellowish paper. It consists of approximately 15 lines of text, with some lines starting with a large initial letter. There are several small annotations or corrections written in a different, smaller script interspersed within the main text.



Handwritten text in Arabic script, likely a religious or philosophical treatise. The text is written in a cursive style and includes several lines of prose. Some words are written in smaller, more compact script, possibly indicating specific terms or names. The text is arranged in approximately 12 lines across the page.

Handwritten text in Arabic script, continuing the text from the previous page. The script is consistent with the previous page, showing a cursive style. The text is arranged in approximately 12 lines across the page. There are some small annotations or corrections visible, such as the word "بسم" (Bismillah) at the beginning of a line.





Handwritten text in Arabic script, likely a religious or philosophical treatise. The text is written in a cursive style and spans approximately 15 lines on the right page.

Handwritten text in Arabic script, likely a religious or philosophical treatise. The text is written in a cursive style and spans approximately 15 lines on the left page.





20  
 21  
 22  
 23  
 24  
 25  
 26  
 27  
 28  
 29  
 30  
 31  
 32  
 33  
 34  
 35  
 36  
 37  
 38  
 39  
 40  
 41  
 42  
 43  
 44  
 45  
 46  
 47  
 48  
 49  
 50  
 51  
 52  
 53  
 54  
 55  
 56  
 57  
 58  
 59  
 60  
 61  
 62  
 63  
 64  
 65  
 66  
 67  
 68  
 69  
 70  
 71  
 72  
 73  
 74  
 75  
 76  
 77  
 78  
 79  
 80  
 81  
 82  
 83  
 84  
 85  
 86  
 87  
 88  
 89  
 90  
 91  
 92  
 93  
 94  
 95  
 96  
 97  
 98  
 99  
 100

1  
 2  
 3  
 4  
 5  
 6  
 7  
 8  
 9  
 10  
 11  
 12  
 13  
 14  
 15  
 16  
 17  
 18  
 19  
 20  
 21  
 22  
 23  
 24  
 25  
 26  
 27  
 28  
 29  
 30  
 31  
 32  
 33  
 34  
 35  
 36  
 37  
 38  
 39  
 40  
 41  
 42  
 43  
 44  
 45  
 46  
 47  
 48  
 49  
 50  
 51  
 52  
 53  
 54  
 55  
 56  
 57  
 58  
 59  
 60  
 61  
 62  
 63  
 64  
 65  
 66  
 67  
 68  
 69  
 70  
 71  
 72  
 73  
 74  
 75  
 76  
 77  
 78  
 79  
 80  
 81  
 82  
 83  
 84  
 85  
 86  
 87  
 88  
 89  
 90  
 91  
 92  
 93  
 94  
 95  
 96  
 97  
 98  
 99  
 100



Handwritten text in a cursive script, likely a historical document or manuscript. The text is written in a dark ink on aged paper. It consists of approximately 15 lines of text, starting with a large initial letter. The script is dense and characteristic of early modern European handwriting.

Handwritten text in a cursive script, likely a historical document or manuscript. The text is written in a dark ink on aged paper. It consists of approximately 15 lines of text, starting with a large initial letter. The script is dense and characteristic of early modern European handwriting.

Handwritten text in Arabic script, likely a religious or philosophical treatise. The text is written in a cursive style with some diacritics. It begins with a large initial letter 'P' and continues with several lines of text. There are some small annotations or corrections in the right margin.

Handwritten text in Arabic script, continuing the text from the previous page. It features a large initial letter 'P' and several lines of text. There are some small annotations or corrections in the right margin.

Handwritten text in a cursive script, likely a historical document or manuscript. The text is written in a dark ink on aged paper. It consists of approximately 12 lines of text, with some words written in a larger, bolder script than others, possibly indicating emphasis or specific terms. The script is highly stylized and difficult to decipher without a key.

Handwritten text, possibly a title or a specific section header, written in a cursive script. It appears to be a single line of text, possibly a name or a date.

Handwritten text in a cursive script, continuing from the previous page. It consists of approximately 12 lines of text, similar in style to the text on the opposite page. The script is highly stylized and difficult to decipher without a key.





Handwritten text in a cursive script, likely a historical document or manuscript. The text is written in a dark ink on aged, yellowish paper. It consists of approximately 15 lines of text, with some lines starting with a large initial letter. The script is dense and characteristic of early modern European handwriting.

Handwritten text in a cursive script, likely a historical document or manuscript. The text is written in a dark ink on aged, yellowish paper. It consists of approximately 15 lines of text, with some lines starting with a large initial letter. The script is dense and characteristic of early modern European handwriting.



Handwritten text in a cursive script, likely a historical document or manuscript. The text is written in a dark ink on aged, yellowish paper. It consists of approximately 15 lines of text, with some words appearing to be in a different script or dialect than the main body of text. The handwriting is fluid and characteristic of the early modern period.

Handwritten text in a cursive script, likely a historical document or manuscript. The text is written in a dark ink on aged, yellowish paper. It consists of approximately 15 lines of text, with some words appearing to be in a different script or dialect than the main body of text. The handwriting is fluid and characteristic of the early modern period.

Handwritten text in a cursive script, likely a historical document or manuscript. The text is written in a dark ink on aged, yellowish paper. It consists of approximately 15 lines of text, with some words written in a larger, bolder hand, possibly indicating emphasis or specific terms. The script is dense and flowing, characteristic of early modern cursive.

Handwritten text in a cursive script, likely a historical document or manuscript. The text is written in a dark ink on aged, yellowish paper. It consists of approximately 15 lines of text, with some words written in a larger, bolder hand, possibly indicating emphasis or specific terms. The script is dense and flowing, characteristic of early modern cursive.

Handwritten text in a cursive script, likely a historical document or manuscript. The text is written in a dark ink on aged, yellowish paper. It consists of approximately 15 lines of text, with some words and phrases written in a larger, more decorative hand. The script is dense and difficult to decipher without specialized knowledge of the language or dialect. There are several instances of what appear to be initials or specific words written in a larger, bolder hand, possibly indicating important sections or names. The overall appearance is that of a well-used, historical manuscript.

Handwritten text in a cursive script, likely a historical document or manuscript. The text is written in a dark ink on aged, yellowish paper. It consists of approximately 15 lines of text, with some words and phrases written in a larger, more decorative hand. The script is dense and difficult to decipher without specialized knowledge of the language or dialect. There are several instances of what appear to be initials or specific words written in a larger, bolder hand, possibly indicating important sections or names. The overall appearance is that of a well-used, historical manuscript.







Handwritten text in a cursive script, likely a historical document or manuscript. The text is written in a dark ink on aged, yellowish paper. It consists of approximately 15 lines of text, with some words written in a larger, bolder script, possibly indicating emphasis or specific terms. The script is dense and flowing, characteristic of early modern cursive handwriting.

Handwritten text in a cursive script, likely a historical document or manuscript. The text is written in a dark ink on aged, yellowish paper. It consists of approximately 15 lines of text, with some words written in a larger, bolder script, possibly indicating emphasis or specific terms. The script is dense and flowing, characteristic of early modern cursive handwriting.

Handwritten text in Arabic script, likely a religious or philosophical treatise. The text is written in a cursive style and spans the entire page. It begins with a large initial letter 'س' (S) and continues with several lines of text, including the phrase 'سبحان الله العظيم' (Subhan Allah al-Azim) and 'الحمد لله رب العالمين' (Al-hamd لله رب العالمين).

Handwritten text in Arabic script, likely a religious or philosophical treatise. The text is written in a cursive style and spans the entire page. It begins with a large initial letter 'س' (S) and continues with several lines of text, including the phrase 'سبحان الله العظيم' (Subhan Allah al-Azim) and 'الحمد لله رب العالمين' (Al-hamd لله رب العالمين).

Handwritten text in a cursive script, likely a historical document or manuscript. The text is written in a dark ink on aged paper. It consists of approximately 15 lines of text, with some words appearing to be in a different language or dialect than the surrounding text. The script is highly stylized and difficult to decipher without a key.

Handwritten text in a cursive script, likely a historical document or manuscript. The text is written in a dark ink on aged paper. It consists of approximately 15 lines of text, with some words appearing to be in a different language or dialect than the surrounding text. The script is highly stylized and difficult to decipher without a key.























Handwritten text in a cursive script, likely a historical or administrative document. The text is written on the right page of an open book. It consists of approximately 10 lines of text, starting with a long horizontal line that may be a signature or a title. The script is dense and characteristic of early modern European cursive.

