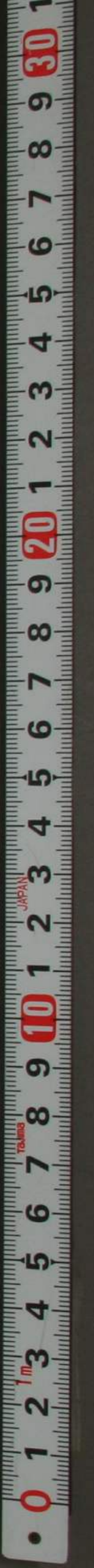




し
し
し
十六

特別
12
4435
16



門 12
號 4435
卷 16

昭和二十二年
九月三日
購求

上巻未だ分けて居り相

と云ふ人ぞうれてもつる

小指の指のしる



ていつとすてんうかひてい

るぞてひとまものひまゆ

世もちんやとちまうひても

うまていおーくめでいーと

いぬ院のいぬあち海ゆが

ろやそひようん^{三月ノ世}ごりの目

人ごあま^降りありあ^相ち海あう

くすらりーなれどそのありの

のまを^地とてあま^降りてあひて

あり給^地あ^降れのりゆ^{三月ノ世}とあり

しとす^降て^降月^降を^降月^降ちれ

いばり^降と人^降ち^降ま^降の院^降より

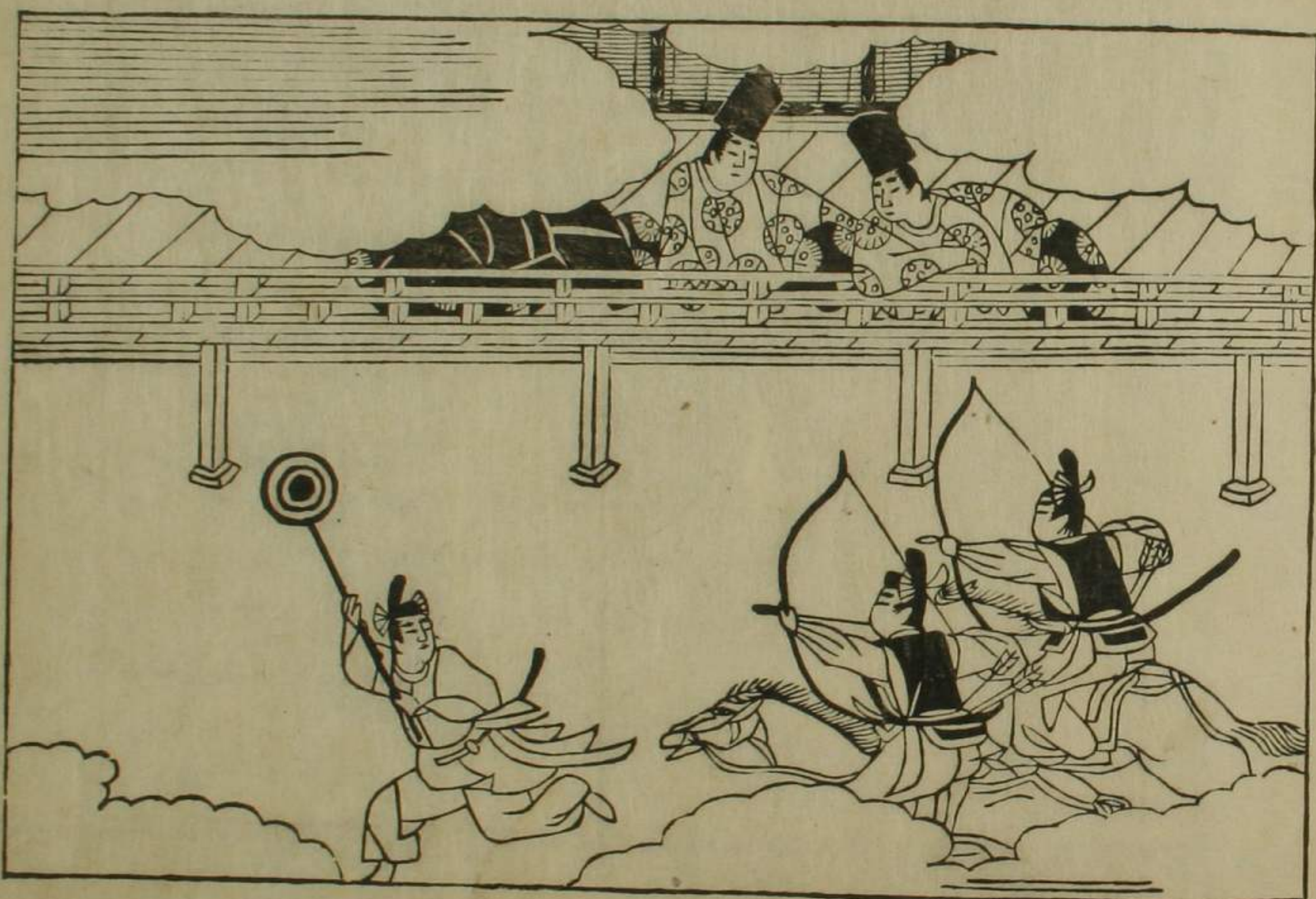
まも^降り^降て^降い^降て^降樹^降の

いばり^降と人^降ち^降ま^降の院^降より

まも^降り^降て^降い^降て^降樹^降の

いばり^降と人^降ち^降ま^降の院^降より

まも^降り^降て^降い^降て^降樹^降の



4
 5
 6
 7
 8
 9
 10
 11
 12
 13
 14
 15
 16
 17
 18
 19
 20
 21
 22
 23
 24
 25
 26
 27
 28
 29
 30
 31
 32
 33
 34
 35
 36
 37
 38
 39
 40
 41
 42
 43
 44
 45
 46
 47
 48
 49
 50
 51
 52
 53
 54
 55
 56
 57
 58
 59
 60
 61
 62
 63
 64
 65
 66
 67
 68
 69
 70
 71
 72
 73
 74
 75
 76
 77
 78
 79
 80
 81
 82
 83
 84
 85
 86
 87
 88
 89
 90
 91
 92
 93
 94
 95
 96
 97
 98
 99
 100
 101
 102
 103
 104
 105
 106
 107
 108
 109
 110
 111
 112
 113
 114
 115
 116
 117
 118
 119
 120
 121
 122
 123
 124
 125
 126
 127
 128
 129
 130
 131
 132
 133
 134
 135
 136
 137
 138
 139
 140
 141
 142
 143
 144
 145
 146
 147
 148
 149
 150
 151
 152
 153
 154
 155
 156
 157
 158
 159
 160
 161
 162
 163
 164
 165
 166
 167
 168
 169
 170
 171
 172
 173
 174
 175
 176
 177
 178
 179
 180
 181
 182
 183
 184
 185
 186
 187
 188
 189
 190
 191
 192
 193
 194
 195
 196
 197
 198
 199
 200
 201
 202
 203
 204
 205
 206
 207
 208
 209
 210
 211
 212
 213
 214
 215
 216
 217
 218
 219
 220
 221
 222
 223
 224
 225
 226
 227
 228
 229
 230
 231
 232
 233
 234
 235
 236
 237
 238
 239
 240
 241
 242
 243
 244
 245
 246
 247
 248
 249
 250
 251
 252
 253
 254
 255
 256
 257
 258
 259
 260
 261
 262
 263
 264
 265
 266
 267
 268
 269
 270
 271
 272
 273
 274
 275
 276
 277
 278
 279
 280
 281
 282
 283
 284
 285
 286
 287
 288
 289
 290
 291
 292
 293
 294
 295
 296
 297
 298
 299
 300

Handwritten musical notation on the right page of an open manuscript. The notation consists of a single melodic line with various note values and rests. There are several small annotations in Japanese characters interspersed within the notation, including "相拍" (sōhaku) and "拍子" (hakuji).

Handwritten musical notation on the left page of an open manuscript. The notation is similar to the right page, featuring a single melodic line with notes and rests. It includes several Japanese annotations, such as "相拍" (sōhaku) and "拍子" (hakuji), which likely indicate specific rhythmic or performance instructions.

1515年 1516年 1517年 1518年 1519年 1520年 1521年 1522年 1523年 1524年
 1525年 1526年 1527年 1528年 1529年 1530年 1531年 1532年 1533年 1534年
 1535年 1536年 1537年 1538年 1539年 1540年 1541年 1542年 1543年 1544年
 1545年 1546年 1547年 1548年 1549年 1550年 1551年 1552年 1553年 1554年
 1555年 1556年 1557年 1558年 1559年 1560年 1561年 1562年 1563年 1564年
 1565年 1566年 1567年 1568年 1569年 1570年 1571年 1572年 1573年 1574年
 1575年 1576年 1577年 1578年 1579年 1580年 1581年 1582年 1583年 1584年
 1585年 1586年 1587年 1588年 1589年 1590年 1591年 1592年 1593年 1594年
 1595年 1596年 1597年 1598年 1599年 1600年 1601年 1602年 1603年 1604年
 1605年 1606年 1607年 1608年 1609年 1610年 1611年 1612年 1613年 1614年
 1615年 1616年 1617年 1618年 1619年 1620年 1621年 1622年 1623年 1624年
 1625年 1626年 1627年 1628年 1629年 1630年 1631年 1632年 1633年 1634年
 1635年 1636年 1637年 1638年 1639年 1640年 1641年 1642年 1643年 1644年
 1645年 1646年 1647年 1648年 1649年 1650年 1651年 1652年 1653年 1654年
 1655年 1656年 1657年 1658年 1659年 1660年 1661年 1662年 1663年 1664年
 1665年 1666年 1667年 1668年 1669年 1670年 1671年 1672年 1673年 1674年
 1675年 1676年 1677年 1678年 1679年 1680年 1681年 1682年 1683年 1684年
 1685年 1686年 1687年 1688年 1689年 1690年 1691年 1692年 1693年 1694年
 1695年 1696年 1697年 1698年 1699年 1700年

1701年 1702年 1703年 1704年 1705年 1706年 1707年 1708年 1709年 1710年
 1711年 1712年 1713年 1714年 1715年 1716年 1717年 1718年 1719年 1720年
 1721年 1722年 1723年 1724年 1725年 1726年 1727年 1728年 1729年 1730年
 1731年 1732年 1733年 1734年 1735年 1736年 1737年 1738年 1739年 1740年
 1741年 1742年 1743年 1744年 1745年 1746年 1747年 1748年 1749年 1750年
 1751年 1752年 1753年 1754年 1755年 1756年 1757年 1758年 1759年 1760年
 1761年 1762年 1763年 1764年 1765年 1766年 1767年 1768年 1769年 1770年
 1771年 1772年 1773年 1774年 1775年 1776年 1777年 1778年 1779年 1780年
 1781年 1782年 1783年 1784年 1785年 1786年 1787年 1788年 1789年 1790年
 1791年 1792年 1793年 1794年 1795年 1796年 1797年 1798年 1799年 1800年
 1801年 1802年 1803年 1804年 1805年 1806年 1807年 1808年 1809年 1810年
 1811年 1812年 1813年 1814年 1815年 1816年 1817年 1818年 1819年 1820年
 1821年 1822年 1823年 1824年 1825年 1826年 1827年 1828年 1829年 1830年
 1831年 1832年 1833年 1834年 1835年 1836年 1837年 1838年 1839年 1840年
 1841年 1842年 1843年 1844年 1845年 1846年 1847年 1848年 1849年 1850年
 1851年 1852年 1853年 1854年 1855年 1856年 1857年 1858年 1859年 1860年
 1861年 1862年 1863年 1864年 1865年 1866年 1867年 1868年 1869年 1870年
 1871年 1872年 1873年 1874年 1875年 1876年 1877年 1878年 1879年 1880年
 1881年 1882年 1883年 1884年 1885年 1886年 1887年 1888年 1889年 1890年
 1891年 1892年 1893年 1894年 1895年 1896年 1897年 1898年 1899年 1900年

林の... 松の... 杉の... 檜の... 楠の... 柏の... 栗の... 柿の... 梨の... 桃の... 桜の... 梅の...
さくらんぼ... ぶどう... ぶらな... ねり... ぶどう... ぶらな... ねり... ぶどう... ぶらな... ねり...
さくらんぼ... ぶどう... ぶらな... ねり... ぶどう... ぶらな... ねり... ぶどう... ぶらな... ねり...
さくらんぼ... ぶどう... ぶらな... ねり... ぶどう... ぶらな... ねり... ぶどう... ぶらな... ねり...

三十五ノ十一

さくらんぼ... ぶどう... ぶらな... ねり... ぶどう... ぶらな... ねり... ぶどう... ぶらな... ねり...
さくらんぼ... ぶどう... ぶらな... ねり... ぶどう... ぶらな... ねり... ぶどう... ぶらな... ねり...
さくらんぼ... ぶどう... ぶらな... ねり... ぶどう... ぶらな... ねり... ぶどう... ぶらな... ねり...
さくらんぼ... ぶどう... ぶらな... ねり... ぶどう... ぶらな... ねり... ぶどう... ぶらな... ねり...

あまのついでに のなま ねのまの
あまのついでに のなま ねのまの
あまのついでに のなま ねのまの
あまのついでに のなま ねのまの
あまのついでに のなま ねのまの

飛去 飛去のまのついでに

あまのついでに のなま ねのまの
あまのついでに のなま ねのまの
あまのついでに のなま ねのまの
あまのついでに のなま ねのまの
あまのついでに のなま ねのまの

あまのついでに のなま ねのまの
あまのついでに のなま ねのまの
あまのついでに のなま ねのまの
あまのついでに のなま ねのまの
あまのついでに のなま ねのまの

あまのついでに のなま ねのまの
あまのついでに のなま ねのまの
あまのついでに のなま ねのまの
あまのついでに のなま ねのまの
あまのついでに のなま ねのまの

あまのついでに のなま ねのまの
あまのついでに のなま ねのまの
あまのついでに のなま ねのまの
あまのついでに のなま ねのまの
あまのついでに のなま ねのまの

あまのついでに のなま ねのまの
あまのついでに のなま ねのまの
あまのついでに のなま ねのまの
あまのついでに のなま ねのまの
あまのついでに のなま ねのまの

地
 一 二 三 四 五 六 七 八 九 十 十一 十二 十三 十四 十五 十六 十七 十八 十九 二十 二十一 二十二 二十三 二十四 二十五 二十六 二十七 二十八 二十九 三十 三十一 三十二 三十三 三十四 三十五 三十六 三十七 三十八 三十九 四十 四十一 四十二 四十三 四十四 四十五 四十六 四十七 四十八 四十九 五十 五十一 五十二 五十三 五十四 五十五 五十六 五十七 五十八 五十九 六十 六十一 六十二 六十三 六十四 六十五 六十六 六十七 六十八 六十九 七十 七十一 七十二 七十三 七十四 七十五 七十六 七十七 七十八 七十九 八十 八十一 八十二 八十三 八十四 八十五 八十六 八十七 八十八 八十九 九十 九十一 九十二 九十三 九十四 九十五 九十六 九十七 九十八 九十九 一百

一 二 三 四 五 六 七 八 九 十 十一 十二 十三 十四 十五 十六 十七 十八 十九 二十 二十一 二十二 二十三 二十四 二十五 二十六 二十七 二十八 二十九 三十 三十一 三十二 三十三 三十四 三十五 三十六 三十七 三十八 三十九 四十 四十一 四十二 四十三 四十四 四十五 四十六 四十七 四十八 四十九 五十 五十一 五十二 五十三 五十四 五十五 五十六 五十七 五十八 五十九 六十 六十一 六十二 六十三 六十四 六十五 六十六 六十七 六十八 六十九 七十 七十一 七十二 七十三 七十四 七十五 七十六 七十七 七十八 七十九 八十 八十一 八十二 八十三 八十四 八十五 八十六 八十七 八十八 八十九 九十 九十一 九十二 九十三 九十四 九十五 九十六 九十七 九十八 九十九 一百

Handwritten text in a cursive script, likely a historical document or manuscript. The text is written in a dark ink on aged paper. It consists of approximately 15 lines of text, with some words and phrases written in a larger, more decorative hand. The script is dense and flowing, characteristic of early modern European cursive.

Handwritten text in a cursive script, continuing from the previous page. The text is written in a dark ink on aged paper. It consists of approximately 15 lines of text, with some words and phrases written in a larger, more decorative hand. The script is dense and flowing, characteristic of early modern European cursive. There are several small annotations in a different script interspersed within the main text.

分上

此右左候

様姓

此右左候

此右左候

此右左候

此右左候

Handwritten text in a cursive script, likely a historical document or manuscript. The text is written in a dark ink on aged paper. It consists of approximately 15 lines of text, with some lines starting with a large initial letter. There are several small annotations or corrections written above certain words, some enclosed in small boxes or circles. The script is dense and characteristic of a specific historical period.

三十五ノ二十一

Handwritten text in a cursive script, continuing from the previous page. It consists of approximately 15 lines of text, with some lines starting with a large initial letter. There are several small annotations or corrections written above certain words, some enclosed in small boxes or circles. The script is dense and characteristic of a specific historical period.

Handwritten text in a cursive script, likely a historical document or manuscript. The text is written in a dark ink on aged paper. It consists of approximately 15 lines of text, with some characters appearing to be in a different script or dialect. There are some small annotations or corrections in the text, such as "院" (In) and "保" (Ho) written vertically.

Handwritten text in a cursive script, continuing from the previous page. It consists of approximately 15 lines of text, with some characters appearing to be in a different script or dialect. There are some small annotations or corrections in the text, such as "三" (San) and "三" (San) written vertically.

Handwritten text in a cursive script, likely a historical document or manuscript. The text is written in a dark ink on aged paper. It consists of approximately 15 lines of text, with some words appearing to be in a different script or dialect than the surrounding text. The handwriting is fluid and characteristic of the early modern period.

三十五ノ二十三

Handwritten text in a cursive script, continuing from the previous page. The text is written in a dark ink on aged paper. It consists of approximately 15 lines of text, with some words appearing to be in a different script or dialect than the surrounding text. The handwriting is fluid and characteristic of the early modern period.

Handwritten text in a cursive script, likely a historical document or manuscript. The text is written in a dark ink on aged paper. It consists of approximately 15 lines of text, with some words and phrases written in a larger, more decorative hand. There are several small annotations or corrections written above the main lines of text. The script is dense and flowing, characteristic of a historical cursive style.

Handwritten text in a cursive script, likely a historical document or manuscript. The text is written in a dark ink on aged paper. It consists of approximately 15 lines of text, with some words and phrases written in a larger, more decorative hand. There are several small annotations or corrections written above the main lines of text. The script is dense and flowing, characteristic of a historical cursive style.

Handwritten text in a cursive script, likely a historical document or letter. The text is written in a dark ink on aged paper. It consists of approximately 15 lines of text, with some words written in a larger, bolder hand, possibly indicating emphasis or specific terms. The script is dense and characteristic of early modern European handwriting.

Handwritten text in a cursive script, continuing from the previous page. The text is written in a dark ink on aged paper. It consists of approximately 15 lines of text, with some words written in a larger, bolder hand, possibly indicating emphasis or specific terms. The script is dense and characteristic of early modern European handwriting.

Handwritten text in a cursive script, likely a historical document or manuscript. The text is written in a dark ink on aged paper. It consists of approximately 15 lines of text, starting with a large initial letter. The script is highly stylized and characteristic of the Ottoman or Persian calligraphic tradition.

Handwritten text in a cursive script, likely a historical document or manuscript. The text is written in a dark ink on aged paper. It consists of approximately 15 lines of text, starting with a large initial letter. The script is highly stylized and characteristic of the Ottoman or Persian calligraphic tradition.

Handwritten text in Arabic script, consisting of approximately 15 lines of dense cursive script.

Handwritten text in Arabic script, consisting of approximately 15 lines of dense cursive script.

Handwritten text in a cursive script, likely a historical document or manuscript. The text is written in a dark ink on aged paper. It consists of approximately 15 lines of text, starting with a large initial letter 'V'. The script is highly stylized and difficult to decipher without a key.

Handwritten text in a cursive script, continuing from the previous page. It consists of approximately 15 lines of text, starting with a large initial letter 'V'. The script is highly stylized and difficult to decipher without a key.

Handwritten text in Arabic script, consisting of approximately 15 lines of dense cursive script.

Handwritten text in Arabic script, consisting of approximately 15 lines of dense cursive script.

۱۰۰
 ۱۰۱
 ۱۰۲
 ۱۰۳
 ۱۰۴
 ۱۰۵
 ۱۰۶
 ۱۰۷
 ۱۰۸
 ۱۰۹
 ۱۱۰
 ۱۱۱
 ۱۱۲
 ۱۱۳
 ۱۱۴
 ۱۱۵
 ۱۱۶
 ۱۱۷
 ۱۱۸
 ۱۱۹
 ۱۲۰
 ۱۲۱
 ۱۲۲
 ۱۲۳
 ۱۲۴
 ۱۲۵
 ۱۲۶
 ۱۲۷
 ۱۲۸
 ۱۲۹
 ۱۳۰
 ۱۳۱
 ۱۳۲
 ۱۳۳
 ۱۳۴
 ۱۳۵
 ۱۳۶
 ۱۳۷
 ۱۳۸
 ۱۳۹
 ۱۴۰
 ۱۴۱
 ۱۴۲
 ۱۴۳
 ۱۴۴
 ۱۴۵
 ۱۴۶
 ۱۴۷
 ۱۴۸
 ۱۴۹
 ۱۵۰
 ۱۵۱
 ۱۵۲
 ۱۵۳
 ۱۵۴
 ۱۵۵
 ۱۵۶
 ۱۵۷
 ۱۵۸
 ۱۵۹
 ۱۶۰
 ۱۶۱
 ۱۶۲
 ۱۶۳
 ۱۶۴
 ۱۶۵
 ۱۶۶
 ۱۶۷
 ۱۶۸
 ۱۶۹
 ۱۷۰
 ۱۷۱
 ۱۷۲
 ۱۷۳
 ۱۷۴
 ۱۷۵
 ۱۷۶
 ۱۷۷
 ۱۷۸
 ۱۷۹
 ۱۸۰
 ۱۸۱
 ۱۸۲
 ۱۸۳
 ۱۸۴
 ۱۸۵
 ۱۸۶
 ۱۸۷
 ۱۸۸
 ۱۸۹
 ۱۹۰
 ۱۹۱
 ۱۹۲
 ۱۹۳
 ۱۹۴
 ۱۹۵
 ۱۹۶
 ۱۹۷
 ۱۹۸
 ۱۹۹
 ۲۰۰

۲۰۱
 ۲۰۲
 ۲۰۳
 ۲۰۴
 ۲۰۵
 ۲۰۶
 ۲۰۷
 ۲۰۸
 ۲۰۹
 ۲۱۰
 ۲۱۱
 ۲۱۲
 ۲۱۳
 ۲۱۴
 ۲۱۵
 ۲۱۶
 ۲۱۷
 ۲۱۸
 ۲۱۹
 ۲۲۰
 ۲۲۱
 ۲۲۲
 ۲۲۳
 ۲۲۴
 ۲۲۵
 ۲۲۶
 ۲۲۷
 ۲۲۸
 ۲۲۹
 ۲۳۰
 ۲۳۱
 ۲۳۲
 ۲۳۳
 ۲۳۴
 ۲۳۵
 ۲۳۶
 ۲۳۷
 ۲۳۸
 ۲۳۹
 ۲۴۰
 ۲۴۱
 ۲۴۲
 ۲۴۳
 ۲۴۴
 ۲۴۵
 ۲۴۶
 ۲۴۷
 ۲۴۸
 ۲۴۹
 ۲۵۰
 ۲۵۱
 ۲۵۲
 ۲۵۳
 ۲۵۴
 ۲۵۵
 ۲۵۶
 ۲۵۷
 ۲۵۸
 ۲۵۹
 ۲۶۰
 ۲۶۱
 ۲۶۲
 ۲۶۳
 ۲۶۴
 ۲۶۵
 ۲۶۶
 ۲۶۷
 ۲۶۸
 ۲۶۹
 ۲۷۰
 ۲۷۱
 ۲۷۲
 ۲۷۳
 ۲۷۴
 ۲۷۵
 ۲۷۶
 ۲۷۷
 ۲۷۸
 ۲۷۹
 ۲۸۰
 ۲۸۱
 ۲۸۲
 ۲۸۳
 ۲۸۴
 ۲۸۵
 ۲۸۶
 ۲۸۷
 ۲۸۸
 ۲۸۹
 ۲۹۰
 ۲۹۱
 ۲۹۲
 ۲۹۳
 ۲۹۴
 ۲۹۵
 ۲۹۶
 ۲۹۷
 ۲۹۸
 ۲۹۹
 ۳۰۰

Handwritten text in a cursive script, likely a musical score or a list of names. The text is written in a fluid, connected style across approximately 15 lines. Some characters are written in a slightly larger or bolder hand, possibly indicating specific notes or names.

三十一頁

Handwritten text in a cursive script, continuing from the previous page. The text is written in a fluid, connected style across approximately 15 lines. Some characters are written in a slightly larger or bolder hand, possibly indicating specific notes or names. There are some small annotations or markings above certain lines of text.

Handwritten text in a cursive script, likely a historical document or manuscript. The text is written in a dark ink on aged paper. It consists of approximately 15 lines of text, with some words written in a larger, bolder script, possibly indicating emphasis or specific terms. The script is dense and characteristic of early modern European handwriting.

Handwritten text in a cursive script, continuing from the previous page. The text is written in a dark ink on aged paper. It consists of approximately 15 lines of text, with some words written in a larger, bolder script, possibly indicating emphasis or specific terms. The script is dense and characteristic of early modern European handwriting.

Handwritten text in a cursive script, likely a historical document or manuscript. The text is written in a dark ink on aged paper. It consists of approximately 15 lines of text, starting with a long horizontal line that may be a decorative flourish or a specific marker. The script is dense and characteristic of early modern European handwriting.

Handwritten text in a cursive script, continuing from the previous page. It consists of approximately 15 lines of text, maintaining the same dense, early modern handwriting style. The text is written in a dark ink on aged paper. It starts with a long horizontal line, similar to the one on the previous page, and continues with several lines of dense script.

Handwritten text in a cursive script, likely a historical document or manuscript. The text is written in a dark ink on aged paper. It consists of approximately 15 lines of text, with some lines starting with a large initial letter. There are several small annotations or corrections written above certain words, some enclosed in small boxes or circles. The script is dense and characteristic of early modern European handwriting.

三十一
三十二

Handwritten text in a cursive script, continuing from the previous page. It consists of approximately 15 lines of text, with some lines starting with a large initial letter. There are several small annotations or corrections written above certain words, some enclosed in small boxes or circles. The script is dense and characteristic of early modern European handwriting.

Handwritten text in Arabic script, consisting of approximately 15 lines of dense cursive script.



Handwritten text in Arabic script, consisting of approximately 15 lines of dense cursive script, mirroring the layout of the opposite page.

Handwritten text in a cursive script, likely a historical document or manuscript. The text is written in a dark ink on aged paper. It consists of approximately 15 lines of text, with some lines starting with a large initial letter. The script is highly stylized and characteristic of the early modern period.

三十五ノ四十一

Handwritten text in a cursive script, continuing from the previous page. The text is written in a dark ink on aged paper. It consists of approximately 15 lines of text, with some lines starting with a large initial letter. The script is highly stylized and characteristic of the early modern period.

Handwritten text in a cursive script, likely a historical document or manuscript. The text is written in a dark ink on aged paper. It consists of approximately 15 lines of text, with some characters appearing to be in a different script or dialect. There are several small annotations or corrections written above the main lines of text.

178-179

Handwritten text in a cursive script, continuing from the previous page. The text is written in a dark ink on aged paper. It consists of approximately 15 lines of text, with some characters appearing to be in a different script or dialect. There are several small annotations or corrections written above the main lines of text.

Handwritten text in Arabic script, consisting of approximately 15 lines of dense cursive script.

Handwritten text in Arabic script, consisting of approximately 15 lines of dense cursive script.

Handwritten text in Arabic script, consisting of approximately 15 lines of dense cursive script.

Handwritten text in Arabic script, consisting of approximately 15 lines of dense cursive script.

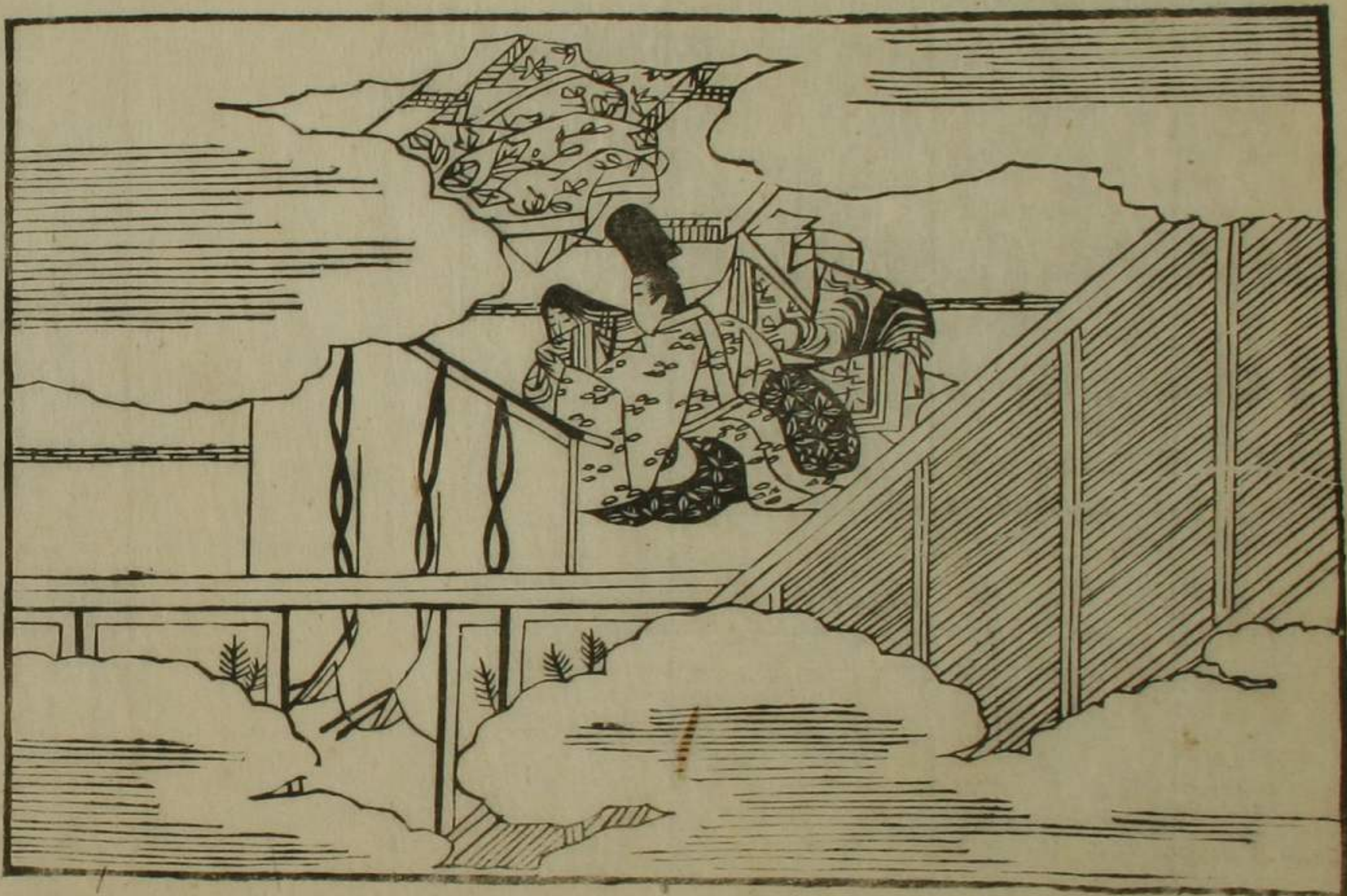
Handwritten text in Arabic script on the right page, featuring several lines of cursive script with small annotations in Arabic script interspersed throughout.

Handwritten text in Arabic script on the left page, continuing the cursive script from the right page with various annotations and a structured layout.

Handwritten text in a cursive script, likely a historical document or manuscript. The text is written in a dark ink on aged paper. It consists of approximately 15 lines of text, with some characters appearing to be in a different script or dialect. There are several small annotations or corrections written above certain lines of text.

三十一頁

Handwritten text in a cursive script, continuing from the previous page. The text is written in a dark ink on aged paper. It consists of approximately 15 lines of text, with some characters appearing to be in a different script or dialect. There are several small annotations or corrections written above certain lines of text.



梅

梅の花は春の先づき
 紅梅の香は遠くまで
 白梅の影は水辺に
 梅の葉は風に舞ひ
 梅の枝は雪に覆はれ
 梅の実には酸っぱい
 梅の葉には甘い香り
 梅の花は五瓣の花
 梅の葉は卵形の葉
 梅の枝は曲がりくねり
 梅の根は石を穿つ

わぐりてあけおしめりし...
くわあてはるみはあつとてしめりし
あつとてはるみはあつとてしめりし
しめりしはあつとてはるみはあつとてしめりし
あつとてはるみはあつとてしめりし
しめりしはあつとてはるみはあつとてしめりし
あつとてはるみはあつとてしめりし
しめりしはあつとてはるみはあつとてしめりし
あつとてはるみはあつとてしめりし
しめりしはあつとてはるみはあつとてしめりし

あつとてはるみはあつとてしめりし
しめりしはあつとてはるみはあつとてしめりし
あつとてはるみはあつとてしめりし
しめりしはあつとてはるみはあつとてしめりし
あつとてはるみはあつとてしめりし
しめりしはあつとてはるみはあつとてしめりし
あつとてはるみはあつとてしめりし
しめりしはあつとてはるみはあつとてしめりし
あつとてはるみはあつとてしめりし
しめりしはあつとてはるみはあつとてしめりし

Handwritten text in a cursive script, likely a historical document or manuscript. The text is written in a fluid, connected style across approximately 15 lines.

Handwritten text in a cursive script, continuing from the previous page. The text is written in a fluid, connected style across approximately 15 lines.

Handwritten text in Arabic script, consisting of approximately 15 lines. The script is dense and cursive. There are several small annotations in Arabic script interspersed within the main text.

Handwritten text in Arabic script, consisting of approximately 15 lines. The script is dense and cursive. There are several small annotations in Arabic script interspersed within the main text.

約者封一節之望

Handwritten text in a cursive script, likely a historical document or letter. The text is written in a fluid, connected style across approximately 15 lines.

三十一 水十一

Handwritten text in a cursive script, continuing from the previous page. The text is written in a fluid, connected style across approximately 15 lines. There are several small annotations in Chinese characters interspersed within the text, such as '拍', '後分', '三', and 'カ'.

Handwritten text in a cursive script, likely a historical document or manuscript. The text is written in a dark ink on aged paper. It consists of approximately 15 lines of text, with some words written in a larger, more decorative hand. There are several small annotations or corrections written above the main lines of text.

Handwritten text in a cursive script, continuing from the previous page. The text is written in a dark ink on aged paper. It consists of approximately 15 lines of text, with some words written in a larger, more decorative hand. There are several small annotations or corrections written above the main lines of text.

Handwritten text in a cursive script, likely a musical score or a list of names. The text is written in a fluid, connected style. Some characters are written in a different script or as symbols, possibly representing specific notes or instructions. The text is arranged in approximately 15 horizontal lines.

Handwritten text in a cursive script, similar to the right page. It appears to be a continuation of the same text or a separate entry. The script is consistent with the right page, showing a high degree of fluidity and connection between characters. The text is arranged in approximately 15 horizontal lines.

Handwritten text in a cursive script, likely a historical document or manuscript. The text is written in a dark ink on aged paper. It consists of approximately 15 lines of text, with some words appearing to be in a different language or dialect than the surrounding text. The script is highly stylized and difficult to decipher without a key.

三十一百

Handwritten text in a cursive script, continuing from the previous page. The text is written in a dark ink on aged paper. It consists of approximately 15 lines of text, with some words appearing to be in a different language or dialect than the surrounding text. The script is highly stylized and difficult to decipher without a key.

Handwritten text in a cursive script, likely a historical document or manuscript. The text is written in a dark ink on aged paper. It consists of several lines of text, with some words and phrases appearing to be in a non-Latin script, possibly Arabic or Persian. There are some small annotations or corrections in the margins.

Small vertical text or annotation in the center of the page, possibly a page number or a reference mark.

Handwritten text in a cursive script, continuing from the previous page. The text is written in a dark ink on aged paper. It consists of several lines of text, with some words and phrases appearing to be in a non-Latin script, possibly Arabic or Persian. There are some small annotations or corrections in the margins.

Handwritten text in a cursive script, likely a historical document or manuscript. The text is written in a dark ink on aged paper. It consists of approximately 15 lines of text, with some lines starting with a large initial letter. There are several small annotations or corrections written above certain words, including the numbers 411, 412, 413, and 414. The script is dense and characteristic of early modern European handwriting.

Handwritten text in a cursive script, continuing from the previous page. It consists of approximately 15 lines of text, with some lines starting with a large initial letter. There are several small annotations or corrections written above certain words, including the numbers 411, 412, 413, and 414. The script is dense and characteristic of early modern European handwriting.

Handwritten text in a cursive script, likely a historical document or manuscript.

Handwritten text, possibly a section header or a specific entry.

Handwritten text in a cursive script, continuing the narrative or list from the previous page.

三十五、六十八

Handwritten text in a cursive script, continuing the narrative or list from the previous page.

てちりきりぐであかきうらむぐ
んづでららうらうらなをちうくわ
つらちがうらうらまうらんうら
かえらんちがうらえあひちんすま
とくあゆゆのちがうらうのすまひ
とくあゆゆのちがうらうのすまひ
はえくを海の心もらんとうふも
あづきもあひへんそらうらうま
てうれいあゆらうあけあふ人
の心もあうけうれみまどのあゆ
なもあまうらうらひ者もあうら
れどそれえいあうらうらうら
ふんとあひまれも人ああうら
まられつらうらうらうらうら
うらうらうらうらうらうらうら
そあゆのちがうらうらうらうら

さちりきりぐであかきうらむぐ
んづでららうらうらなをちうくわ
つらちがうらうらまうらんうら
かえらんちがうらえあひちんすま
とくあゆゆのちがうらうのすまひ
とくあゆゆのちがうらうのすまひ
はえくを海の心もらんとうふも
あづきもあひへんそらうらうま
てうれいあゆらうあけあふ人
の心もあうけうれみまどのあゆ
なもあまうらうらひ者もあうら
れどそれえいあうらうらうら
ふんとあひまれも人ああうら
まられつらうらうらうらうら
うらうらうらうらうらうらうら
そあゆのちがうらうらうらうら

とまゝに心ごとくさすいひしうのね
きこもよまぢびさなめがぢく表せつ
くしんまづいごさありのつしんを
もつひそあぢびのんよひうしひさむ
らんちうしひんおちるどくしんを
すぢらちれどぶうくごあわやいごさ
ちぢしもまばらりの人よ心しけあ
まべくしんそあぢびのんよひうしひ
ちけれどぶくしんまづいひんを
もまよあわぢびさぢびおぢいしんを
あまよけてお院のしんもまづいひ
まづいひまづいひあまよぢびさ
がんとけいしんせぢりかんおぢいひん
世のこもまづいひあまよぢびさ
いごさあわまぢらぬれどらうしんを
うしんあぢすまよぢいひの山海へえ

あまよぢびさぢびおぢいしんを
あまよけてお院のしんもまづいひ
まづいひまづいひあまよぢびさ
がんとけいしんせぢりかんおぢいひん
世のこもまづいひあまよぢびさ
いごさあわまぢらぬれどらうしんを
うしんあぢすまよぢいひの山海へえ
あまよぢびさぢびおぢいしんを
あまよけてお院のしんもまづいひ
まづいひまづいひあまよぢびさ
がんとけいしんせぢりかんおぢいひん
世のこもまづいひあまよぢびさ
いごさあわまぢらぬれどらうしんを
うしんあぢすまよぢいひの山海へえ

Handwritten text in a cursive script, likely a historical document or manuscript. The text is written in a dark ink on aged paper. It consists of approximately 15 lines of text. There are several small annotations or corrections written in a different script or smaller hand, interspersed within the main text. The overall appearance is that of a well-preserved historical record.

Small vertical text or annotation located in the gutter between the two pages, possibly a page number or a reference mark.

Handwritten text in a cursive script, continuing from the previous page. The text is written in a dark ink on aged paper. It consists of approximately 15 lines of text. There are several small annotations or corrections written in a different script or smaller hand, interspersed within the main text. The overall appearance is that of a well-preserved historical record.

Handwritten text in a cursive script, likely a historical document or manuscript. The text is written in a dark ink on aged paper. It consists of approximately 15 lines of text, with some words written in a larger, bolder script, possibly indicating emphasis or specific terms. The script is dense and flowing, characteristic of historical cursive handwriting.

三十五ノ十六

Handwritten text in a cursive script, continuing from the previous page. The text is written in a dark ink on aged paper. It consists of approximately 15 lines of text, with some words written in a larger, bolder script, possibly indicating emphasis or specific terms. The script is dense and flowing, characteristic of historical cursive handwriting.

Handwritten text in Arabic script, consisting of approximately 15 lines of dense cursive script.

Handwritten text in Arabic script, consisting of approximately 15 lines of dense cursive script.

Handwritten text in a cursive script, likely a historical document or letter. The text is written in a dark ink on aged paper. It begins with a long horizontal line and continues with several lines of text, ending with a short horizontal line. There are some small annotations or corrections written above certain words.

Handwritten text in a cursive script, continuing from the previous page. The text is written in a dark ink on aged paper. It begins with a long horizontal line and continues with several lines of text, ending with a short horizontal line. There are some small annotations or corrections written above certain words.

Handwritten text in Arabic script, consisting of approximately 15 lines of dense cursive script.

三十一

Handwritten text in Arabic script, consisting of approximately 15 lines of dense cursive script.

Handwritten text in Arabic script, consisting of approximately 15 lines of dense cursive script.

Handwritten text in Arabic script, consisting of approximately 15 lines of dense cursive script.

Handwritten text in a cursive script, likely a historical document or manuscript. The text is written in a dark ink on aged paper. It consists of approximately 15 lines of text, with some lines starting with a large initial letter. The script is highly stylized and characteristic of the early modern period.

三十五ノ八十二

Handwritten text in a cursive script, continuing from the previous page. The text is written in a dark ink on aged paper. It consists of approximately 15 lines of text, with some lines starting with a large initial letter. The script is highly stylized and characteristic of the early modern period.

Handwritten text in a cursive script, likely a historical document or manuscript. The text is written in a dark ink on aged paper. It consists of approximately 15 lines of text. There are several small annotations in a different script (possibly Chinese or Japanese) interspersed within the main text, particularly in the middle and lower sections. The handwriting is fluid and characteristic of a specific historical period.

三十五ノ八十二

Handwritten text in a cursive script, continuing from the previous page. It consists of approximately 15 lines of text. Like the previous page, it features several small annotations in a different script interspersed within the main text. The handwriting is consistent with the previous page, showing a high level of skill and familiarity with the script.

Handwritten text in a cursive script, likely a letter or document. The text is written in a fluid, connected style. There are several lines of text, with some words appearing to be in a different script or dialect. The text is written on aged, slightly yellowed paper.

Handwritten text in a cursive script, continuing from the previous page. The text is written in a fluid, connected style. There are several lines of text, with some words appearing to be in a different script or dialect. The text is written on aged, slightly yellowed paper.

Handwritten musical notation on the right page of the manuscript. The notation consists of a single melodic line with various note values and rests. There are several small annotations in Japanese characters interspersed throughout the score, such as '拍' (beat), '息' (breath), '強' (strong), and '弱' (weak).

Handwritten musical notation on the left page of the manuscript. The notation is similar to the right page, featuring a single melodic line with notes and rests. Japanese annotations are present, including '拍' (beat), '息' (breath), and '強' (strong).

Handwritten text in a cursive script, likely a historical document or manuscript. The text is written in a dark ink on aged paper. It consists of approximately 15 lines of text, with some characters appearing to be in a different script or dialect. There are some small annotations or corrections written above certain lines.

Handwritten text in a cursive script, continuing from the previous page. The text is written in a dark ink on aged paper. It consists of approximately 15 lines of text, with some characters appearing to be in a different script or dialect. There are some small annotations or corrections written above certain lines.

Handwritten text in a cursive script, likely a historical document or manuscript. The text is written in a dark ink on aged paper. It appears to be a list or a series of entries, possibly related to a collection or inventory. The script is dense and difficult to decipher without specialized knowledge of the language or dialect used.

三十五ノ九十三

仁知寺
Handwritten text at the bottom of the page, possibly a signature or a reference to a specific location or institution.

