

うつが物説
1

特別
~ 12
4351
3





門 12
號 4351
卷 3



昭和二十六年
四月十九日
購求



Handwritten text in a cursive style, consisting of approximately 12 vertical columns of characters, written in black ink on the left page of the manuscript.

Handwritten text in cursive script, likely a letter or document, spanning the left page of the manuscript. The text is written in a fluid, connected style characteristic of the 17th or 18th century.

Handwritten text in cursive script, likely a letter or document, spanning the right page of the manuscript. The text is written in a fluid, connected style characteristic of the 17th or 18th century.

Handwritten text in a cursive script, likely a list or account, consisting of approximately 12 lines of text.

Handwritten text, possibly a date or a specific entry, located in the upper right section of the page.

Handwritten flourish or separator line.

Handwritten flourish or separator line.

Handwritten flourish or separator line.

Handwritten flourish or separator line.

Handwritten flourish or separator line.

Handwritten flourish or separator line.

Handwritten flourish or separator line.



Handwritten text in a cursive script, likely a historical document or manuscript. The text is written in a dark ink on aged, yellowed paper. It consists of approximately 12 lines of text, with some lines starting with a large initial letter. The script is highly stylized and difficult to decipher without a key.

Handwritten text in a cursive script, likely a historical document or manuscript. The text is written in a dark ink on aged, yellowed paper. It consists of approximately 12 lines of text, with some lines starting with a large initial letter. The script is highly stylized and difficult to decipher without a key.

Handwritten text in a cursive script, likely a historical document or manuscript. The text is written in a dark ink on aged, yellowish paper. It consists of approximately 12 lines of text, starting with a large initial letter 'H' and ending with a period. The script is highly stylized and characteristic of the 17th or 18th century.

Handwritten text in a cursive script, likely a historical document or manuscript. The text is written in a dark ink on aged, yellowish paper. It consists of approximately 12 lines of text, starting with a large initial letter 'H' and ending with a period. The script is highly stylized and characteristic of the 17th or 18th century.

Handwritten text in a cursive script, likely a historical document or manuscript. The text is written in a dark ink on aged, yellowish paper. It consists of approximately 12 lines of text, with some lines starting with a red horizontal line. The script is highly stylized and difficult to decipher without a key.

Handwritten text in a cursive script, likely a historical document or manuscript. The text is written in a dark ink on aged, yellowish paper. It consists of approximately 12 lines of text, with some lines starting with a red horizontal line. The script is highly stylized and difficult to decipher without a key.



Handwritten text in a cursive style, likely a transcription of a poem or a narrative. The text is arranged in several lines, with some characters appearing to be in a different script or dialect. The text is written in black ink on a light-colored background.

Handwritten text in a cursive style, likely a transcription of a poem or a narrative. The text is arranged in several lines, with some characters appearing to be in a different script or dialect. The text is written in black ink on a light-colored background.

Handwritten text in a cursive script, likely a historical document or manuscript. The text is written in a dark ink on aged, yellowish paper. It consists of approximately 12 lines of text, with some lines starting with a small red mark or flourish. The script is highly stylized and difficult to decipher without a key.

Handwritten text in a cursive script, continuing from the previous page. The text is written in a dark ink on aged, yellowish paper. It consists of approximately 12 lines of text, with some lines starting with a small red mark or flourish. The script is highly stylized and difficult to decipher without a key.

Handwritten text in a cursive script, likely a historical document or letter. The text is written in a dark ink on aged, yellowish paper. It consists of approximately 15 lines of text, with some lines starting with a small decorative flourish or initial. The script is highly stylized and difficult to decipher without a key.

Handwritten text in a cursive script, continuing from the previous page. The text is written in a dark ink on aged, yellowish paper. It consists of approximately 15 lines of text, with some lines starting with a small decorative flourish or initial. The script is highly stylized and difficult to decipher without a key.

Handwritten text in Arabic script, consisting of approximately 12 lines of cursive script.

Handwritten text in Arabic script, consisting of approximately 12 lines of cursive script.

Handwritten text in a cursive script, likely Persian or Urdu, consisting of approximately 12 lines of text.

Handwritten text in a cursive script, likely Persian or Urdu, consisting of approximately 12 lines of text.

Handwritten text in a cursive script, likely a form of Urdu or Persian, consisting of approximately 12 lines of text.

Handwritten text in a cursive script, likely a form of Urdu or Persian, consisting of approximately 12 lines of text.



Handwritten Japanese text in cursive (sōsho) style, arranged in vertical columns from right to left. The text is written in black ink on a light-colored paper background. The columns contain approximately 10-12 characters each, though some are partially obscured or less legible due to the cursive style.

1
Handwritten text in a cursive script, likely a historical document or manuscript. The text is written in a dark ink on aged, yellowish paper. It consists of approximately 12 lines of text, starting with a small number '1' at the top right. The script is highly stylized and characteristic of early modern European cursive.

Handwritten text in a cursive script, continuing from the previous page. The text is written in a dark ink on aged, yellowish paper. It consists of approximately 12 lines of text, starting with a small number '1' at the top right. The script is highly stylized and characteristic of early modern European cursive.

Handwritten text in a cursive script, likely a form of Arabic or Persian calligraphy, consisting of approximately 12 lines of text.

Handwritten text in a cursive script, likely a form of Arabic or Persian calligraphy, consisting of approximately 12 lines of text.

Handwritten text in a cursive script, likely a historical document or letter. The text is written in a fluid, connected style across approximately 12 lines. The ink is dark and the paper shows signs of age and wear.

Handwritten text in a cursive script, likely a historical document or letter. The text is written in a fluid, connected style across approximately 12 lines. The ink is dark and the paper shows signs of age and wear.

Handwritten text in a cursive script, likely a historical document or manuscript. The text is written in a dark ink on aged, yellowish paper. The script is highly stylized and difficult to decipher, but appears to be a form of early modern cursive. The text is arranged in approximately 12 horizontal lines across the page.

Handwritten text in a cursive script, likely a historical document or manuscript. The text is written in a dark ink on aged, yellowish paper. The script is highly stylized and difficult to decipher, but appears to be a form of early modern cursive. The text is arranged in approximately 12 horizontal lines across the page.

Handwritten text in a cursive script, likely a historical document or letter. The text is written in a dark ink on aged paper. The script is highly stylized and difficult to decipher without a key. The text is arranged in approximately 12 horizontal lines across the page.

Handwritten text in a cursive script, continuing from the previous page. The text is written in a dark ink on aged paper. The script is highly stylized and difficult to decipher without a key. The text is arranged in approximately 12 horizontal lines across the page.

Handwritten text in a cursive script, likely a historical document or manuscript. The text is written in a dark ink on aged, yellowish paper. It consists of approximately 12 lines of text, with some lines starting with a large initial letter. The script is highly stylized and difficult to decipher without a key.

Handwritten text in a cursive script, likely a historical document or manuscript. The text is written in a dark ink on aged, yellowish paper. It consists of approximately 12 lines of text, with some lines starting with a large initial letter. The script is highly stylized and difficult to decipher without a key.

Handwritten text in a cursive script, consisting of approximately 12 lines of text.

Handwritten text in a cursive script, consisting of approximately 12 lines of text.

Handwritten text in a cursive script, likely a historical document or letter, spanning across the gutter of the notebook. The text is written in dark ink on aged, yellowish paper. It consists of approximately 12 lines of text, with some lines being longer than others, suggesting a mix of full sentences and shorter phrases or clauses. The script is fluid and characteristic of the 17th or 18th century.

Handwritten text in a cursive script, located on the left page of the notebook. It consists of approximately 6 lines of text, continuing the style of the right page. The text is written in dark ink on aged, yellowish paper. The script is fluid and characteristic of the 17th or 18th century.

Handwritten text in a cursive script, likely a form of Arabic or Persian calligraphy, arranged in vertical columns on the left page of the manuscript.



Handwritten text in cursive script, likely a list or account, spanning the left page of the manuscript. The text is written in a fluid, connected style with varying line heights and slants.

Handwritten text in cursive script, continuing from the left page, spanning the right page of the manuscript. The text is written in a fluid, connected style with varying line heights and slants.

Handwritten text in a cursive script, likely a historical document or manuscript. The text is written in a dark ink on aged, yellowish paper. It consists of approximately 12 lines of text, with some lines starting with a decorative flourish. The script is highly stylized and difficult to decipher without a key.

Handwritten text in a cursive script, continuing from the previous page. The text is written in a dark ink on aged, yellowish paper. It consists of approximately 12 lines of text, with some lines starting with a decorative flourish. The script is highly stylized and difficult to decipher without a key.

Handwritten text in a cursive script, likely a historical document or letter. The text is written in a dark ink on aged, yellowish paper. It consists of approximately 12 lines of text, starting with a large initial letter 'C'.

Handwritten text in a cursive script, likely a historical document or letter. The text is written in a dark ink on aged, yellowish paper. It consists of approximately 12 lines of text, starting with a large initial letter 'C'.

Handwritten text in a cursive script, likely a historical document or manuscript. The text is written in a dark ink on aged, yellowish paper. It consists of approximately 12 lines of text, with some lines starting with capital letters. The script is highly stylized and difficult to decipher without a key.

Handwritten text in a cursive script, continuing from the previous page. The text is written in a dark ink on aged, yellowish paper. It consists of approximately 12 lines of text, with some lines starting with capital letters. The script is highly stylized and difficult to decipher without a key.

Handwritten text in a cursive script, likely a historical document or manuscript. The text is written in a dark ink on aged, yellowish paper. It consists of approximately 12 lines of text, with some lines starting with a large initial letter. The script is highly stylized and difficult to decipher without a key.

Handwritten text in a cursive script, likely a historical document or manuscript. The text is written in a dark ink on aged, yellowish paper. It consists of approximately 12 lines of text, with some lines starting with a large initial letter. The script is highly stylized and difficult to decipher without a key.



There is a very beautiful view
of the garden from the veranda
and the garden is very beautiful

very beautiful

very beautiful

very beautiful

very beautiful

very beautiful

very beautiful

very beautiful

Handwritten text in a cursive script, likely a historical document or letter. The text is written in a dark ink on aged paper. The script is highly stylized and difficult to decipher. There are some faint, illegible markings in the center of the page, possibly bleed-through from the reverse side.

Handwritten text in a cursive script, likely a historical document or letter. The text is written in a dark ink on aged paper. The script is highly stylized and difficult to decipher. There are some faint, illegible markings in the center of the page, possibly bleed-through from the reverse side.

سورة النور
بسم الله الرحمن الرحيم
الم نور
انزلنا نوره
على القدر
نور
الذليل
ان نور
الله
يضيء
كل شيء
وقد انزلنا
هذا نور
مبين

الم نور
ان نور
الله
يضيء
كل شيء
وقد انزلنا
هذا نور
مبين
الم نور
ان نور
الله
يضيء
كل شيء
وقد انزلنا
هذا نور
مبين

Handwritten text in a cursive script, likely a historical document or manuscript, consisting of two columns of text on a single page. The script is highly stylized and difficult to decipher, possibly representing a form of shorthand or a specific dialect. The text is written in dark ink on aged, slightly yellowed paper. The page is oriented vertically, with the text running from top to bottom.

Handwritten text in a cursive script, likely a historical document or letter. The text is written in dark ink on aged paper. The script is highly stylized and difficult to decipher. The text is arranged in approximately 12 lines across the page.



Handwritten text in a cursive script, likely a historical document or letter. The text is written in dark ink on aged paper. The script is highly stylized and difficult to decipher. The text is arranged in approximately 12 lines across the page.

Handwritten text in Arabic script, consisting of approximately 12 lines of cursive script.

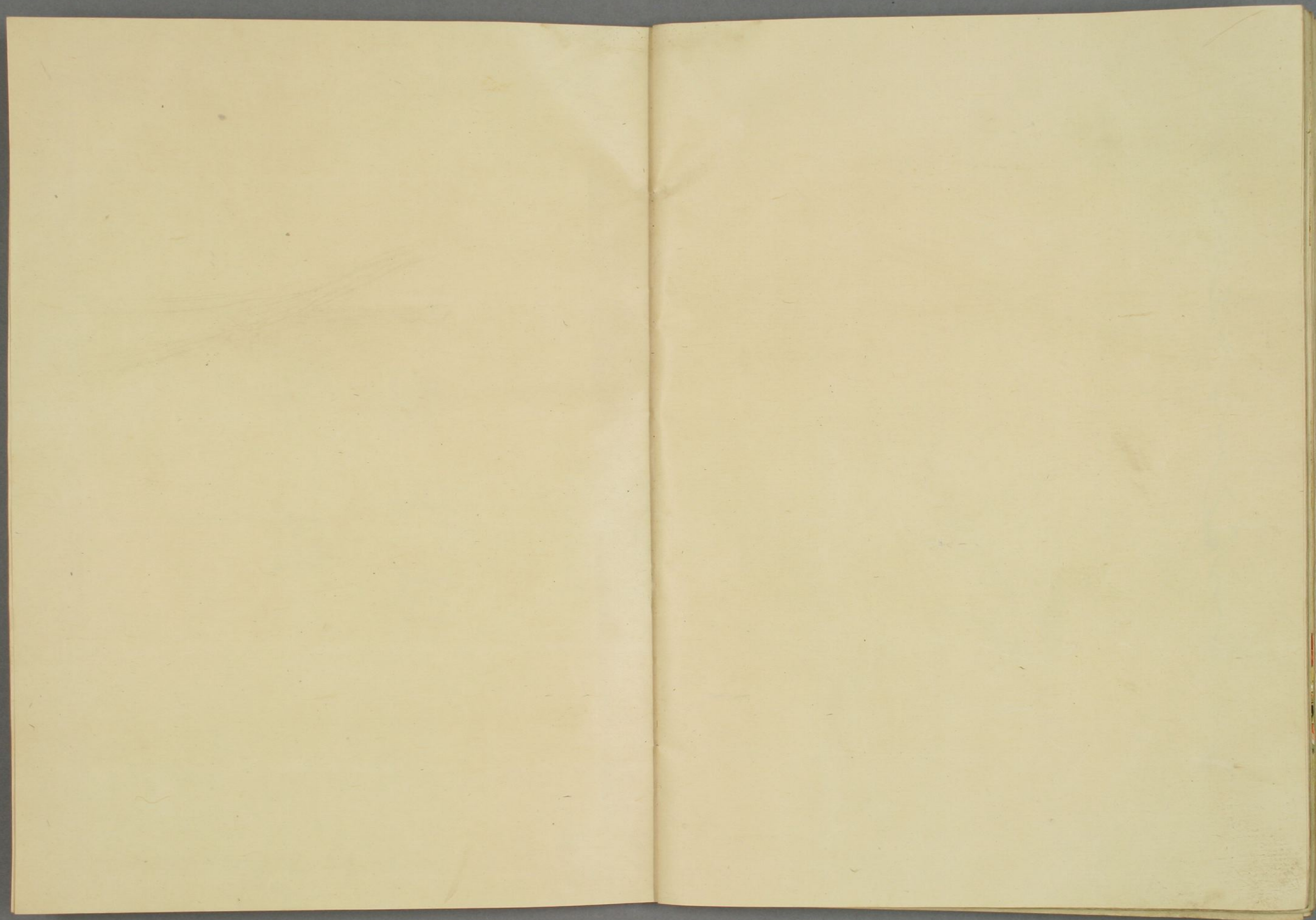
Handwritten text in Arabic script, consisting of approximately 12 lines of cursive script.

Handwritten text in a cursive script, likely Persian or Urdu, spanning the left page of the manuscript. The text is written in dark ink on aged, yellowish paper. It consists of approximately 12 lines of text, with some lines starting with a small decorative flourish or initial. The script is highly fluid and connected, characteristic of the Nasta'liq style.

Handwritten text in a cursive script, likely Persian or Urdu, spanning the right page of the manuscript. The text is written in dark ink on aged, yellowish paper. It consists of approximately 12 lines of text, continuing from the left page. The script is highly fluid and connected, characteristic of the Nasta'liq style.

سنة ١٢٠٥ هـ





以下全て

白紙



