



うたかた物語
中

特別
〜12
4351
2





門 へ 12
號 4351
卷 2



昭和六年
四月十九日
購求



Calligraphy in cursive script (sōsho), consisting of approximately 12 vertical columns of text written in black ink on aged paper.



Handwritten Japanese text in cursive (sōsho) style, arranged vertically on the right page. The text is written in black ink on a light-colored paper background. The characters are difficult to decipher due to the cursive style, but they appear to be a series of connected strokes forming a vertical column of text.

Handwritten text in a cursive script, likely a form of Arabic or Persian calligraphy, consisting of approximately 12 lines of text.

Handwritten text in a cursive script, likely a form of Arabic or Persian calligraphy, consisting of approximately 12 lines of text.

Handwritten text in a cursive script, likely a historical document or letter. The text is written in a dark ink on aged paper. The script is highly stylized and difficult to decipher without a key. The text is arranged in approximately 12 lines across the page.

Handwritten text in a cursive script, likely a historical document or letter. The text is written in a dark ink on aged paper. The script is highly stylized and difficult to decipher without a key. The text is arranged in approximately 12 lines across the page.

Handwritten text in a cursive script, likely a letter or a page from a manuscript. The text is written in dark ink on aged paper and consists of approximately 12 lines of text.

Handwritten text in a cursive script, continuing from the previous page. The text is written in dark ink on aged paper and consists of approximately 10 lines of text.





Handwritten text in a cursive script, likely Persian or Urdu, consisting of approximately 12 lines of text.

Handwritten text in a cursive script, likely Persian or Urdu, consisting of approximately 12 lines of text.

Handwritten text in a cursive script, likely a historical document or letter. The text is written in a dark ink on aged, yellowish paper. It consists of approximately 12 lines of text, with some lines starting with a large initial letter. The script is highly stylized and difficult to decipher without a key.

Handwritten text in a cursive script, continuing from the previous page. It consists of approximately 10 lines of text, with some lines starting with a large initial letter. The script is highly stylized and difficult to decipher without a key.

سورۃ یوسف
بِسْمِ اللّٰهِ الرَّحْمٰنِ الرَّحِیْمِ
اِنَّا نَحْنُ اللّٰهُ لَا اِلٰهَ اِلَّا هُوَ
عَلَّمْنَا الْقُرْاٰنَ بِالْحَقِّ
وَلَا نَزَّلْنٰهُ بِالْجَبْرِ
وَلَا نَحْنُ بِمُتَّبَعِیْنَ
اِنَّا نَحْنُ اللّٰهُ السَّمِیْعُ الْعَلِیْمُ
اِنَّا نَحْنُ اللّٰهُ لَا اِلٰهَ اِلَّا هُوَ
عَلَّمْنَا الْقُرْاٰنَ بِالْحَقِّ
وَلَا نَزَّلْنٰهُ بِالْجَبْرِ
وَلَا نَحْنُ بِمُتَّبَعِیْنَ

اِنَّا نَحْنُ اللّٰهُ السَّمِیْعُ الْعَلِیْمُ
اِنَّا نَحْنُ اللّٰهُ لَا اِلٰهَ اِلَّا هُوَ
عَلَّمْنَا الْقُرْاٰنَ بِالْحَقِّ
وَلَا نَزَّلْنٰهُ بِالْجَبْرِ
وَلَا نَحْنُ بِمُتَّبَعِیْنَ
اِنَّا نَحْنُ اللّٰهُ السَّمِیْعُ الْعَلِیْمُ
اِنَّا نَحْنُ اللّٰهُ لَا اِلٰهَ اِلَّا هُوَ
عَلَّمْنَا الْقُرْاٰنَ بِالْحَقِّ
وَلَا نَزَّلْنٰهُ بِالْجَبْرِ
وَلَا نَحْنُ بِمُتَّبَعِیْنَ
اِنَّا نَحْنُ اللّٰهُ السَّمِیْعُ الْعَلِیْمُ
اِنَّا نَحْنُ اللّٰهُ لَا اِلٰهَ اِلَّا هُوَ
عَلَّمْنَا الْقُرْاٰنَ بِالْحَقِّ
وَلَا نَزَّلْنٰهُ بِالْجَبْرِ
وَلَا نَحْنُ بِمُتَّبَعِیْنَ

Handwritten text in Arabic script, consisting of approximately 12 lines of cursive script.

Handwritten text in Arabic script, consisting of approximately 12 lines of cursive script.



Handwritten text in Arabic script, consisting of approximately 10 lines of calligraphy.

Handwritten text in Arabic script, consisting of a single line.

Handwritten text in Arabic script, consisting of a single line.

Handwritten text in Arabic script, consisting of a single line.

Handwritten text in Arabic script, consisting of a single line.

Handwritten text in Arabic script, consisting of a single line.

Handwritten text in a cursive script, likely a historical document or letter. The text is written in a dark ink on aged, yellowish paper. It consists of approximately 15 lines of text, starting with a large initial letter 'A' and ending with a flourish. The script is highly stylized and characteristic of the 17th or 18th century.

Handwritten text in a cursive script, continuing from the previous page. The text is written in a dark ink on aged, yellowish paper. It consists of approximately 15 lines of text, starting with a large initial letter 'A' and ending with a flourish. The script is highly stylized and characteristic of the 17th or 18th century.

وہو کہ جس کی طرف سے
میں نے اپنے دل سے
اپنی ساری باتیں
کہیں ہیں وہ سب
تو میرے دل کے
خبردار ہیں
میں نے ان سے
اپنی ساری باتیں
کہیں ہیں وہ سب
تو میرے دل کے
خبردار ہیں

وہو کہ جس کی طرف سے
میں نے اپنے دل سے
اپنی ساری باتیں
کہیں ہیں وہ سب
تو میرے دل کے
خبردار ہیں
میں نے ان سے
اپنی ساری باتیں
کہیں ہیں وہ سب
تو میرے دل کے
خبردار ہیں

Handwritten text in a cursive script, likely a form of shorthand or a specific dialect. The text is arranged in approximately 12 horizontal lines across the page.

Handwritten text in a cursive script, continuing from the previous page. The text is arranged in approximately 12 horizontal lines across the page.

Handwritten text in a cursive script, likely Persian or Arabic, consisting of approximately 13 lines of text.

Handwritten text in a cursive script, likely Persian or Arabic, consisting of approximately 14 lines of text.

Handwritten text in Arabic script, consisting of approximately 12 lines of cursive script.

Handwritten text in Arabic script, consisting of approximately 12 lines of cursive script.

Presumptuous. . . .
The first. . . .
The second. . . .
The third. . . .
The fourth. . . .
The fifth. . . .
The sixth. . . .
The seventh. . . .
The eighth. . . .
The ninth. . . .
The tenth. . . .



The eleventh. . . .
The twelfth. . . .
The thirteenth. . . .
The fourteenth. . . .
The fifteenth. . . .
The sixteenth. . . .
The seventeenth. . . .
The eighteenth. . . .
The nineteenth. . . .
The twentieth. . . .
The twenty-first. . . .



Handwritten Japanese text in cursive (sōsho) style, arranged vertically on the right page. The text is written in black ink on a light-colored background.

Handwritten text in cursive script, likely a list or account, written on the left page of an open manuscript. The text is arranged in approximately 12 horizontal lines, starting from the top left and moving downwards. The ink is dark, and the paper shows signs of age and wear.

Handwritten text in cursive script, likely a list or account, written on the right page of an open manuscript. The text is arranged in approximately 12 horizontal lines, starting from the top left of the page and moving downwards. The ink is dark, and the paper shows signs of age and wear.

Handwritten text in a cursive script, likely a historical document or manuscript. The text is written in a dark ink on aged, yellowish paper. It consists of approximately 12 lines of text, starting with a large initial letter 'I' and ending with a period. The script is highly stylized and characteristic of the early modern period.

Handwritten text in a cursive script, likely a historical document or manuscript. The text is written in a dark ink on aged, yellowish paper. It consists of approximately 12 lines of text, starting with a large initial letter 'I' and ending with a period. The script is highly stylized and characteristic of the early modern period.

Handwritten text in cursive script, consisting of approximately 12 lines of text.

Handwritten text in cursive script, consisting of approximately 12 lines of text.

Handwritten text in a cursive script, likely a historical document or manuscript. The text is written in a dark ink on aged, yellowish paper. It consists of approximately 12 lines of text, starting with a large initial letter 'A' on the first line. The script is highly stylized and characteristic of the Ottoman or Persian calligraphic tradition.

Handwritten text in a cursive script, likely a historical document or manuscript. The text is written in a dark ink on aged, yellowish paper. It consists of approximately 12 lines of text, starting with a large initial letter 'A' on the first line. The script is highly stylized and characteristic of the Ottoman or Persian calligraphic tradition.

Handwritten text in a cursive script, likely a historical document or letter. The text is written in a dark ink on aged paper. The script is highly stylized and difficult to decipher without a key. It appears to be a single paragraph of text.

Handwritten text in a cursive script, likely a historical document or letter. The text is written in a dark ink on aged paper. The script is highly stylized and difficult to decipher without a key. It appears to be a single paragraph of text.



Handwritten text in Arabic script, arranged in several lines on the right page of the manuscript. The text is written in a cursive style and appears to be a transcription or commentary related to the illustration on the left page.

Handwritten text in a cursive script, likely a historical document or letter. The text is written in a dark ink on aged, yellowish paper. It consists of approximately 12 lines of text, starting with a large initial letter 'L' and ending with a period. The script is highly stylized and characteristic of the 17th or 18th century.

Handwritten text in a cursive script, likely a historical document or letter. The text is written in a dark ink on aged, yellowish paper. It consists of approximately 12 lines of text, starting with a large initial letter 'L' and ending with a period. The script is highly stylized and characteristic of the 17th or 18th century.

Handwritten text in a cursive script, likely a historical document or manuscript. The text is written in a dark ink on aged, yellowish paper. It consists of approximately 12 lines of text, starting from the top right and moving downwards. The script is highly stylized and difficult to decipher without a key.

Handwritten text in a cursive script, continuing from the previous page. The text is written in a dark ink on aged, yellowish paper. It consists of approximately 12 lines of text, starting from the top left and moving downwards. The script is highly stylized and difficult to decipher without a key.

Handwritten text in a cursive script, likely a historical document or letter. The text is written in a dark ink on aged paper. It consists of approximately 12 lines of text, starting with a large initial letter. The script is highly stylized and characteristic of the early modern period.

Handwritten text in a cursive script, likely a historical document or letter. The text is written in a dark ink on aged paper. It consists of approximately 12 lines of text, starting with a large initial letter. The script is highly stylized and characteristic of the early modern period.

Handwritten text in a cursive script, likely a historical document or letter. The text is written in a dark ink on aged paper. The script is highly stylized and difficult to decipher without specialized knowledge of the language or dialect. The text is arranged in approximately 12 horizontal lines across the page.

Handwritten text in a cursive script, continuing from the previous page. The text is written in a dark ink on aged paper. The script is highly stylized and difficult to decipher without specialized knowledge of the language or dialect. The text is arranged in approximately 12 horizontal lines across the page.

Handwritten text in a cursive script, likely a historical document or manuscript. The text is written in a dark ink on aged, yellowish paper. It consists of approximately 12 lines of text, starting with a large initial letter 'N' on the first line. The script is highly stylized and characteristic of the early modern period.

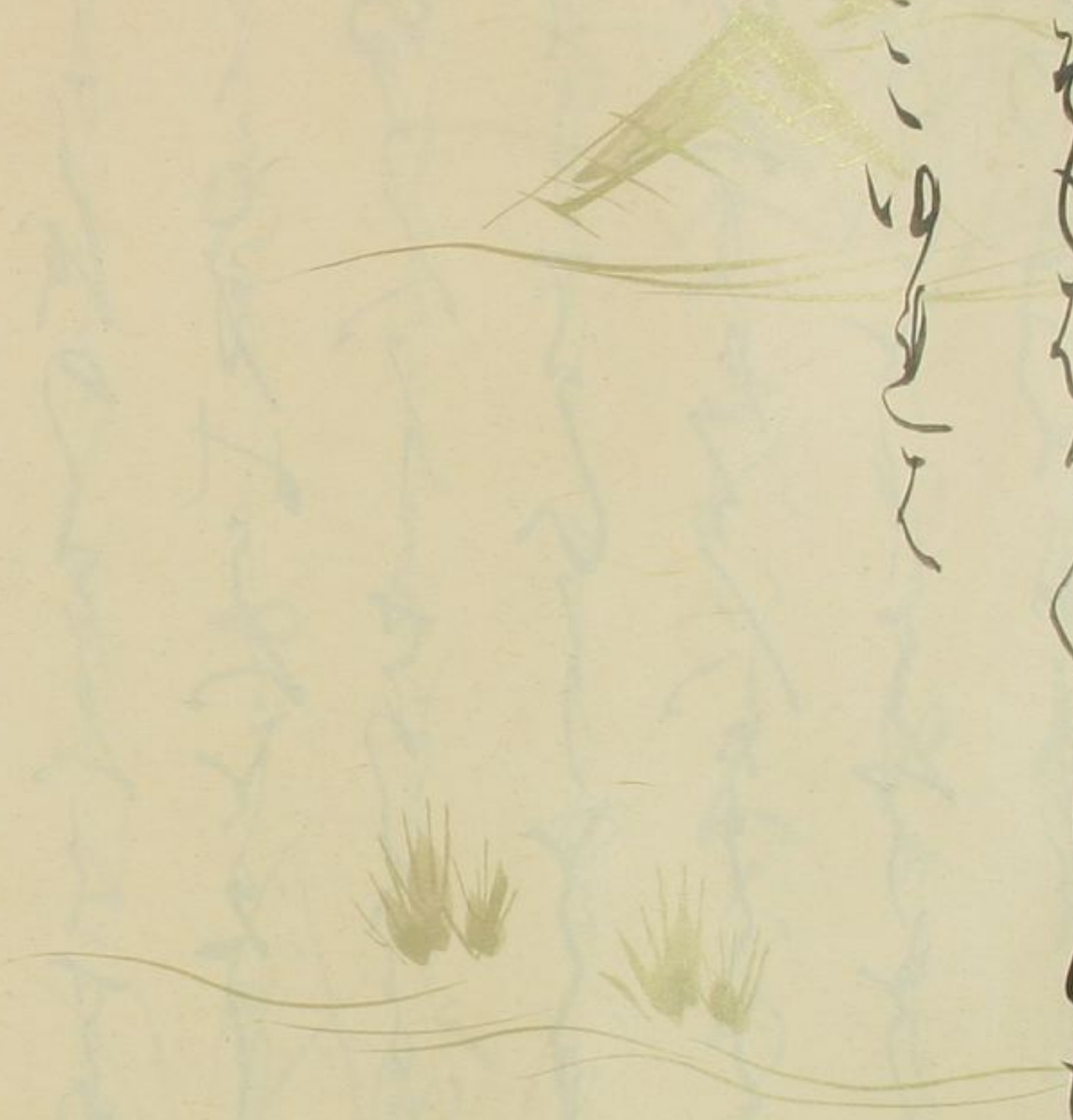
Handwritten text in a cursive script, continuing from the previous page. The text is written in a dark ink on aged, yellowish paper. It consists of approximately 12 lines of text, starting with a large initial letter 'S' on the first line. The script is highly stylized and characteristic of the early modern period.

Handwritten text in cursive script, consisting of approximately 12 lines of text.

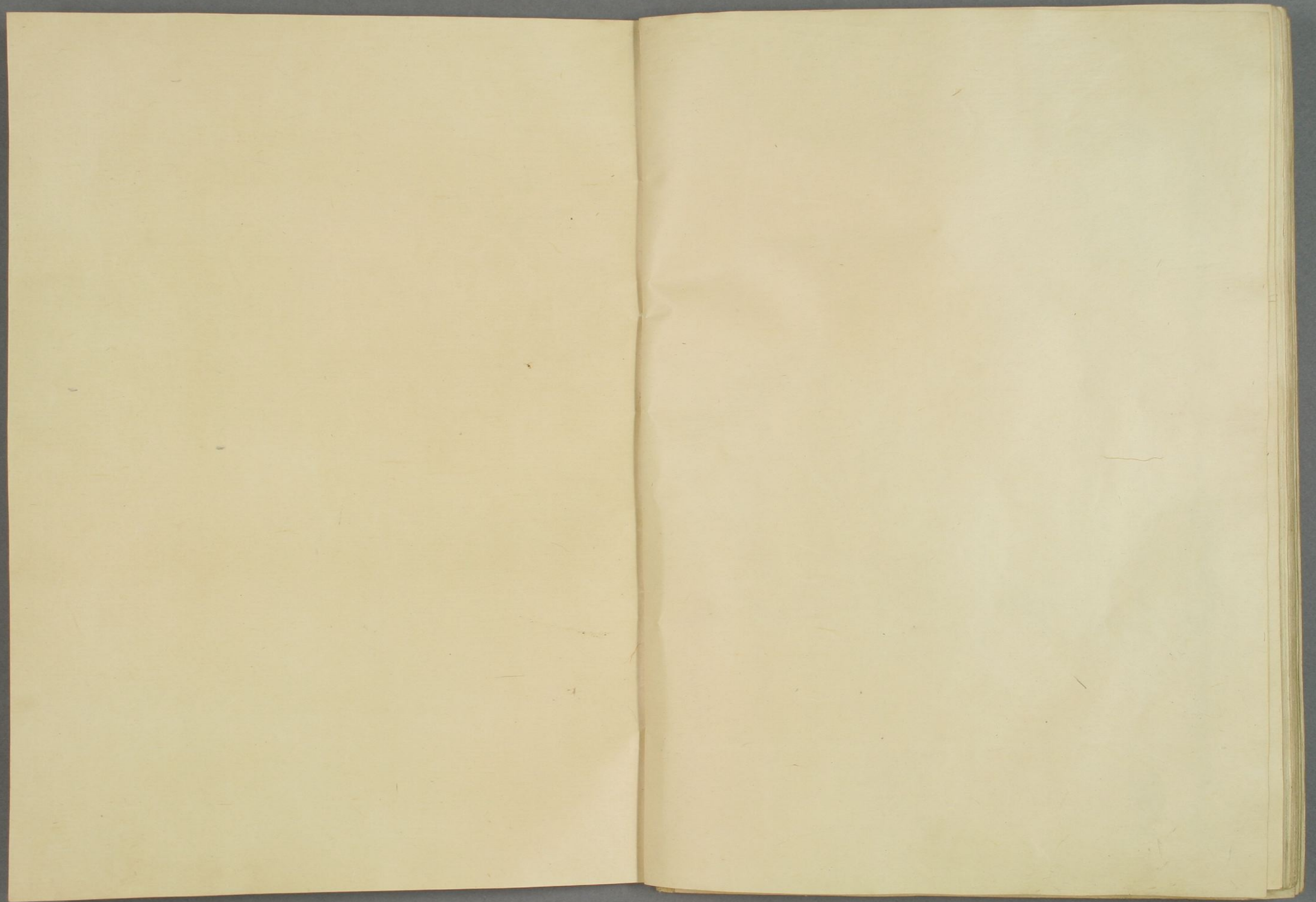


Handwritten text in cursive script, continuing from the previous page, consisting of approximately 12 lines of text.

Handwritten text in a cursive script, possibly a list or a series of entries, located on the right page of the notebook. The text is written in dark ink and appears to be organized into several lines.



Faint, ghostly handwritten text, likely bleed-through from the reverse side of the page, located on the right page of the notebook. The text is very light and difficult to read, but it appears to be organized into several lines.



以下全て

白紙



