



蔵 12
881
41



[Faint, illegible handwriting, likely bleed-through from the reverse side of the page.]

[This page is mostly blank, with some faint, illegible markings and a small dark stain near the top center.]

鈴虫

田原



春の事

春の事

争

争

の事

の事

の事

の事

の事

の事

の事

の事

の事

の事

の事

の事



~~~~~

備花慢寺也

~~~~~

源氏の孫ひけるなや

~~~~~

~~~~~

~~~~~

~~~~~

~~~~~

~~~~~

~~~~~

~~~~~

~~~~~

~~~~~

~~~~~

~~~~~

~~~~~

~~~~~

~~~~~

~~~~~

~~~~~

~~~~~

~~~~~

~~~~~

~~~~~

~~~~~



~~~~~

~~~~~

~~~~~

~~~~~

~~~~~

~~~~~

~~~~~

~~~~~

~~~~~

~~~~~

~~~~~

~~~~~

~~~~~

~~~~~

~~~~~

~~~~~

~~~~~

~~~~~

~~~~~

~~~~~

~~~~~

~~~~~


引去
あつては
あつては
あつては

あつては
あつては
あつては
あつては

あつては
あつては
あつては
あつては

あつては
あつては
あつては
あつては

あつては
あつては
あつては
あつては

源氏色 禁中と冷泉院の月とわかれ一彩をれかた

系院乃林とつらつらとたつたや也 早下ぬ一

あつては
あつては
あつては
あつては

あつては
あつては
あつては
あつては

あつては
あつては
あつては
あつては

源氏色
源氏色

あつては
あつては
あつては
あつては

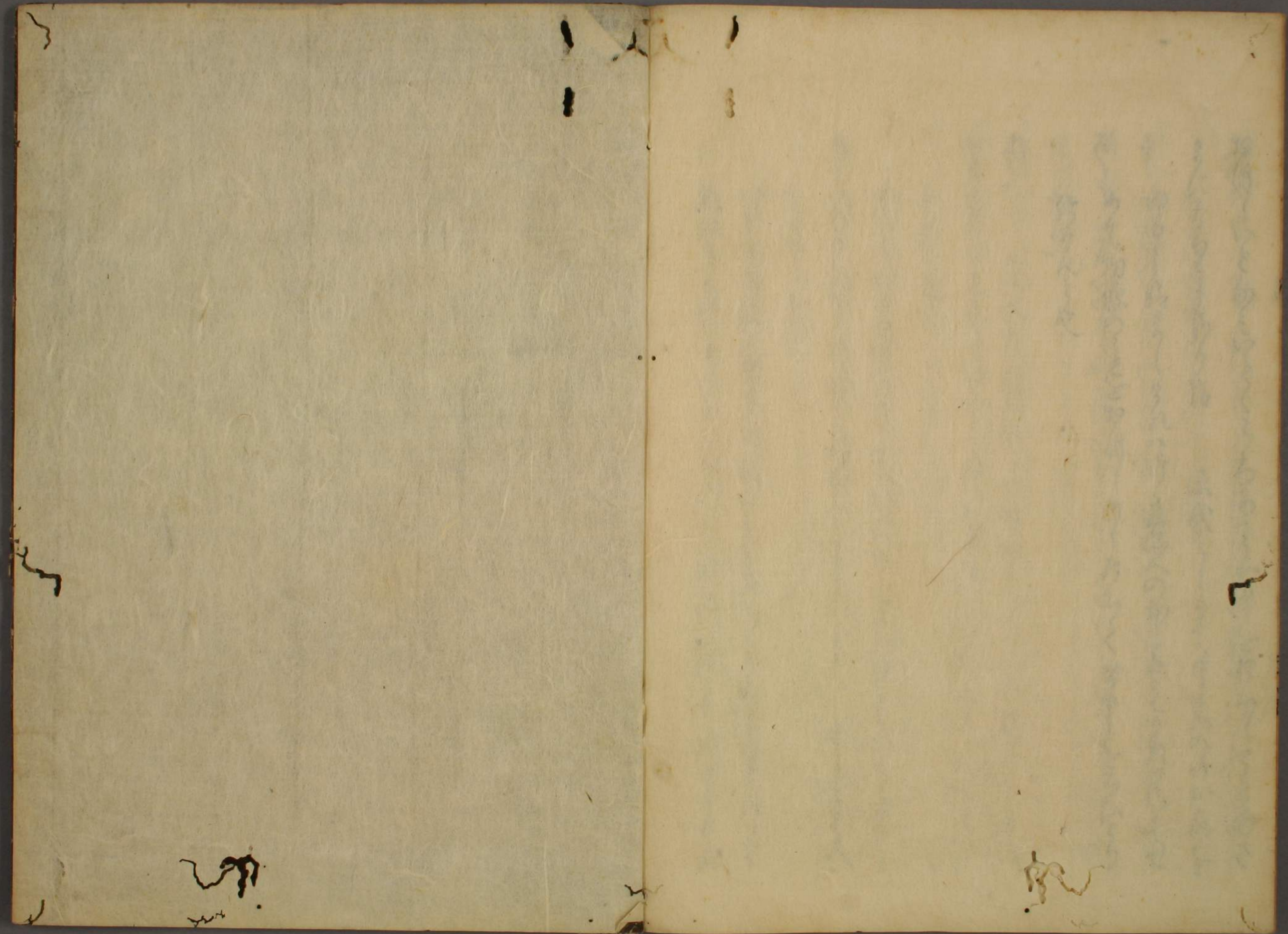
あつては
あつては
あつては
あつては

あつては
あつては
あつては
あつては

あつては
あつては
あつては
あつては

Handwritten text in a cursive script, likely a historical document or letter. The text is written in a fluid, connected style across approximately 12 lines. There are some faint markings and a small signature or stamp at the top right of the page.

Handwritten text in a cursive script, continuing from the previous page. The text is written in a fluid, connected style across approximately 12 lines. There are some faint markings and a small signature or stamp at the top right of the page.



Faint, illegible vertical text or bleed-through from the reverse side of the right page, appearing as light greyish lines.

A small, dark, handwritten mark or scribble located in the bottom left corner of the left page.

A small, dark, handwritten mark or scribble located in the bottom right corner of the right page.

