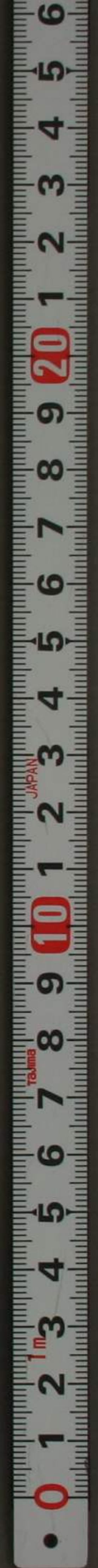


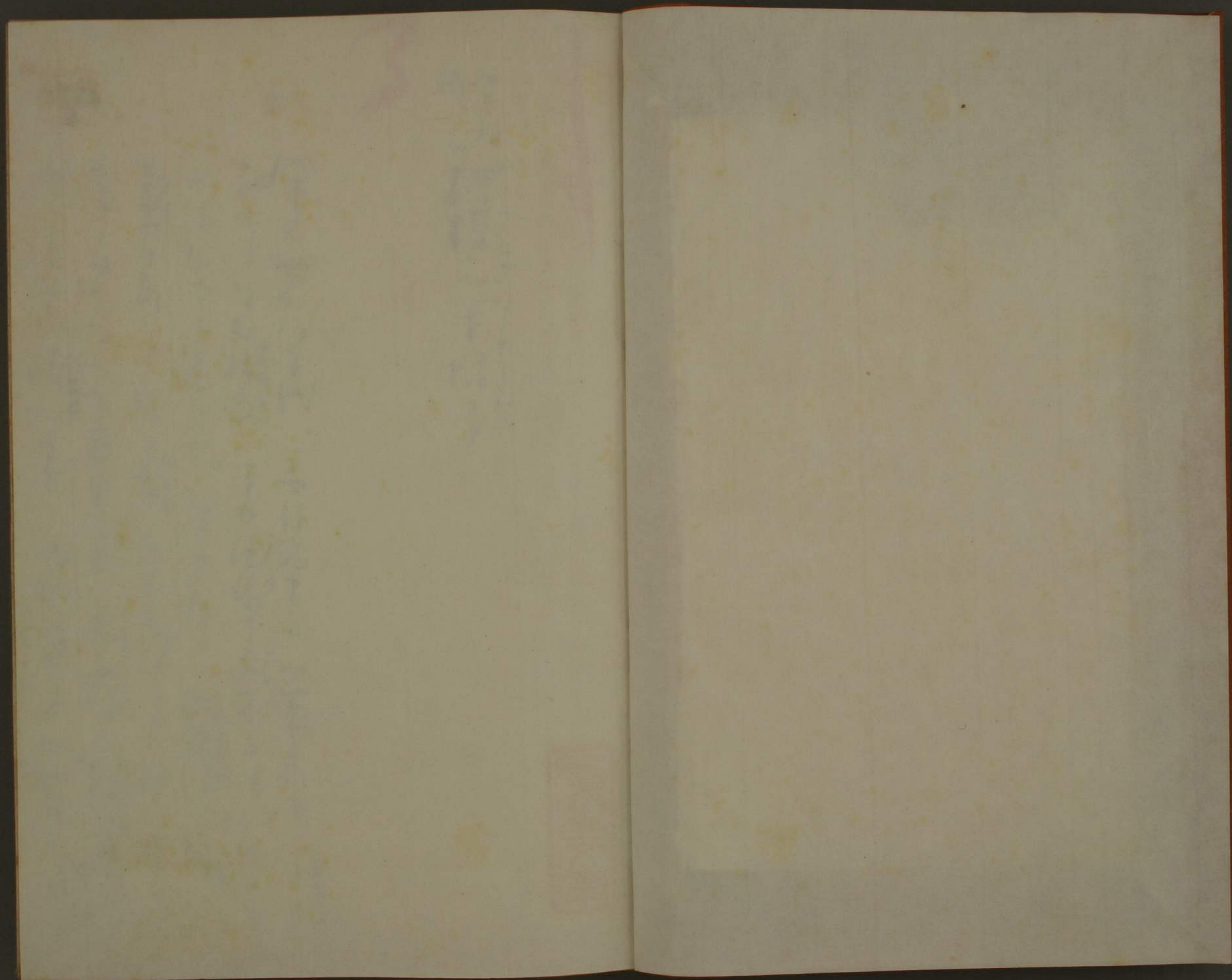


近松世話淨瑠璃註釋書

六

4531
6





Handwritten text in a cursive script, likely a personal letter or diary entry. The text is written on aged, slightly stained paper. It begins with a small mark resembling a checkmark or a stylized 'L'. The script is dense and fills most of the page.

Handwritten text in a cursive script, similar to the one on the opposite page. It also begins with a small mark resembling a checkmark or a stylized 'L'. The text is written on aged, slightly stained paper and appears to be a continuation of the same subject or a separate entry.


~~~~~ [三十一] ああ~~~~~ 漢名  
降た。~~~~~ 雨降た。~~~~~ 降  
の降~~~~~ [三十二] 毎の降  
「Name」~~~~~  
~~~~~ [三十三] ~~~~~  
~~~~~ [三十四] ~~~~~  
~~~~~ [三十五] ~~~~~  
~~~~~ [三十六] ~~~~~  
~~~~~ [三十七] ~~~~~  
~~~~~ [三十八] ~~~~~  
~~~~~ [三十九] ~~~~~  
~~~~~ [四十] ~~~~~

~~~~~ [四十一] ~~~~~  
~~~~~ [四十二] ~~~~~  
~~~~~ [四十三] ~~~~~  
~~~~~ [四十四] ~~~~~  
~~~~~ [四十五] ~~~~~  
~~~~~ [四十六] ~~~~~  
~~~~~ [四十七] ~~~~~  
~~~~~ [四十八] ~~~~~  
~~~~~ [四十九] ~~~~~  
~~~~~ [五十] ~~~~~



Handwritten text in a cursive script, likely a letter or a personal note. The text is written in a fluid, connected style with many loops and flourishes. It appears to be a single paragraph or a series of lines of text. The ink is dark and the paper shows some signs of age and wear.

Handwritten text in a cursive script, similar to the text on the opposite page. It is written in a fluid, connected style with many loops and flourishes. The ink is dark and the paper shows some signs of age and wear.



Handwritten text in cursive script, likely a letter or diary entry. The text is written vertically on the left page of an open book. It begins with a long horizontal line, possibly a signature or a decorative flourish. The characters are fluid and connected, typical of the 'sōsho' style. The text appears to be a personal communication, possibly mentioning names and dates, though the specific words are difficult to decipher due to the cursive nature of the script.

Handwritten text in cursive script, continuing from the previous page. The text is written vertically on the right page of an open book. It continues the fluid, connected characters of the 'sōsho' style. The text appears to be a personal communication, possibly mentioning names and dates, though the specific words are difficult to decipher due to the cursive nature of the script.















































Handwritten musical notation on the right page, consisting of a single staff with various notes and rests.

Handwritten musical notation on the left page, consisting of a single staff with various notes and rests.



















Handwritten notes on the right page, consisting of several lines of cursive script. The text is dense and appears to be a continuation of a narrative or a list of items.

Handwritten notes on the left page, consisting of several lines of cursive script. The text is dense and appears to be a continuation of a narrative or a list of items. There is a small circular mark at the top left of the page.







Wanderung nach ...

Handwritten text in German script, likely a travel journal or diary entry, starting with 'Wanderung nach ...' and continuing with several lines of cursive writing.

Wanderung nach ...

Handwritten text in German script, continuing the journal entry from the previous page, starting with 'Wanderung nach ...' and continuing with several lines of cursive writing.











Handwritten text in a cursive script, likely a personal letter or diary entry. The text is written on aged, slightly yellowed paper. It begins with a salutation and continues with several lines of text, including a signature at the bottom.

Handwritten text in a cursive script, continuing from the previous page. The text is written on aged, slightly yellowed paper. It begins with a salutation and continues with several lines of text, including a signature at the bottom.







Handwritten text in a cursive script, likely a musical score or a list of notes. The text is written on aged, yellowed paper and includes various symbols and characters, possibly representing musical notes or specific instructions. The script is dense and fills most of the page.

Handwritten text in a cursive script, similar to the left page. It appears to be a continuation of the notes or a separate section. The text is written on aged, yellowed paper and includes various symbols and characters, possibly representing musical notes or specific instructions. The script is dense and fills most of the page.



Handwritten text in a cursive script, likely a personal letter or diary entry. The text is written in a fluid, connected style across several lines.

Handwritten text in a cursive script, similar to the left page. It includes several lines of text, some of which appear to be enclosed in brackets or have specific markings.











Handwritten text in a cursive script, likely a personal letter or diary entry. The text is written in a fluid, connected style with some legible words and phrases interspersed among the cursive lines.

Handwritten text in a cursive script, continuing from the previous page. The text is dense and covers most of the page, with some words appearing to be written in a slightly different or more formal hand than the surrounding cursive.



Handwritten musical notation on the left page, featuring various rhythmic patterns and notes.

Handwritten musical notation on the right page, including a section with a circled '11' and a circled '10'.



Handwritten text in a cursive script, possibly a list or a series of entries. The text is written in a fluid, connected style with some capital letters and punctuation marks. The entries appear to be names or titles, possibly related to a collection or a set of items.

Handwritten text in a cursive script, similar to the right page. It contains several lines of text, including what appears to be a list of items or names. The script is consistent with the right page, suggesting a continuous document or a similar set of notes.











Handwritten text in Arabic script, consisting of approximately 12 lines of dense cursive writing.

Handwritten text in Arabic script, consisting of approximately 12 lines of dense cursive writing.







Handwritten text in a cursive script, likely a personal letter or diary entry. The text is written in a fluid, connected style with various flourishes and loops. It appears to be a continuous piece of writing on a single page.

Handwritten text in a cursive script, similar to the page on the right. This page contains several lines of text, with some words or phrases appearing to be written in a slightly different or more formal hand than the rest of the page. The overall style is consistent with the adjacent page.



Handwritten text in a cursive script, likely a letter or a personal note. The text is written in a fluid, connected style with many loops and flourishes. It appears to be a continuous piece of writing, possibly a letter or a personal note. The ink is dark and the paper is aged and slightly yellowed.

Handwritten text in a cursive script, similar to the text on the opposite page. It is written in a fluid, connected style with many loops and flourishes. The ink is dark and the paper is aged and slightly yellowed. The text is arranged in several lines, filling most of the page.



Handwritten text in a cursive script, likely a personal letter or diary entry. The text is written in a fluid, connected style across approximately 12 lines. The ink is dark and the paper shows signs of age.

Handwritten text in a cursive script, continuing from the previous page. The text is written in a fluid, connected style across approximately 12 lines. The ink is dark and the paper shows signs of age.























Handwritten text in cursive script, likely a letter or diary entry, starting with a large initial character.

Handwritten text in cursive script, continuing the narrative or message from the previous page.

Handwritten text in cursive script, continuing the narrative or message from the previous page.







Handwritten text in cursive script, likely a letter or journal entry. The text is written in a fluid, connected style. It begins with a large initial letter, possibly 'H'. The text is arranged in several lines, with some words appearing to be 'Herrn', 'Guten', 'Morgen', 'Ihre', 'Liebe', 'Gedächtnis', 'Ihre', 'Güte', 'Gedenke', 'Ihre', 'Güte', 'Gedenke', 'Ihre', 'Güte', 'Gedenke'. The text ends with a large flourish.

Handwritten text in cursive script, likely a letter or journal entry. The text is written in a fluid, connected style. It begins with a large initial letter, possibly 'H'. The text is arranged in several lines, with some words appearing to be 'Herrn', 'Guten', 'Morgen', 'Ihre', 'Liebe', 'Gedächtnis', 'Ihre', 'Güte', 'Gedenke', 'Ihre', 'Güte', 'Gedenke'. The text ends with a large flourish.



Handwritten text in a cursive script, likely a form of shorthand or a specific dialect. The text is arranged in approximately 12 horizontal lines across the page. The characters are fluid and interconnected, with some larger, more distinct symbols interspersed among the smaller, more repetitive strokes.

Handwritten text in a cursive script, similar to the left page. This page contains approximately 12 lines of text. The script is highly stylized and appears to be a continuation of the system shown on the previous page. The lines are closely spaced and flow across the width of the page.



Handwritten text in a cursive script, likely a personal letter or diary entry. The text is written in a fluid, connected style across several lines. It begins with a small mark resembling a dot or a short stroke. The script is dense and fills most of the page.

Handwritten text in a cursive script, continuing from the previous page. The text is written in a fluid, connected style across several lines. It begins with a small mark resembling a dot or a short stroke. The script is dense and fills most of the page.



Handwritten text in a cursive script, likely a letter or a page from a manuscript. The text is written in a fluid, connected style with various flourishes and ligatures. It appears to be a personal or official communication, possibly in a historical or literary context.

Handwritten flourish or symbol at the top of the page, consisting of a large, stylized loop or scrollwork element.

Handwritten text in a cursive script, continuing from the previous page. The text is written in a fluid, connected style with various flourishes and ligatures. It appears to be a personal or official communication, possibly in a historical or literary context.















Handwritten text in a cursive script, likely a personal letter or diary entry. The text is written in a fluid, connected style across approximately 12 lines. It begins with a small, illegible mark at the top left. The script is dense and fills most of the page.

Handwritten text in a cursive script, continuing from the previous page. The text is written in a fluid, connected style across approximately 12 lines. It begins with a small, illegible mark at the top left. The script is dense and fills most of the page.







Handwritten text in a cursive script, likely a personal letter or diary entry. The text is written in a fluid, connected style across several lines. It appears to be a mix of letters and symbols, possibly representing a specific dialect or a shorthand system. The ink is dark and the paper shows signs of age.

Handwritten text in a cursive script, continuing from the previous page. The text is written in a fluid, connected style across several lines. It appears to be a mix of letters and symbols, possibly representing a specific dialect or a shorthand system. The ink is dark and the paper shows signs of age.



Handwritten text in a cursive script, likely a personal letter or diary entry. The text is written in a fluid, connected style with some capital letters and punctuation marks. The ink is dark and the paper shows signs of age.

Handwritten text in a cursive script, continuing from the previous page. The writing is dense and fills most of the page. The script is consistent with the one on the adjacent page.















Handwritten text in a cursive script, likely a personal letter or diary entry. The text is written in a fluid, connected style across approximately 12 lines. The ink is dark and the paper shows signs of age and wear.

Handwritten text in a cursive script, continuing from the previous page. The text is written in a fluid, connected style across approximately 12 lines. The ink is dark and the paper shows signs of age and wear.























Handwritten text in a cursive script, likely a personal letter or diary entry. The text is written in a fluid, connected style across several lines.

Handwritten text in a cursive script, continuing from the previous page. The text is written in a fluid, connected style across several lines.











Handwritten text in a cursive script, likely a letter or a personal note. The text is written in a fluid, connected style with some decorative flourishes. It appears to be a continuous piece of writing on a single page.

Handwritten text in a cursive script, similar to the one on the opposite page. It is written in a fluid, connected style with some decorative flourishes. The text is arranged in several lines, filling most of the page.



Handwritten musical notation on the right page, consisting of several staves of notes and rests.

Handwritten musical notation on the left page, consisting of several staves of notes and rests.



























Handwritten text in a cursive script, likely a historical document or manuscript. The text is written on a page with a red horizontal line near the top. The script is dense and fills most of the page.

Handwritten text in a cursive script, likely a historical document or manuscript. This block is located at the top of the page, above the main body of text.







