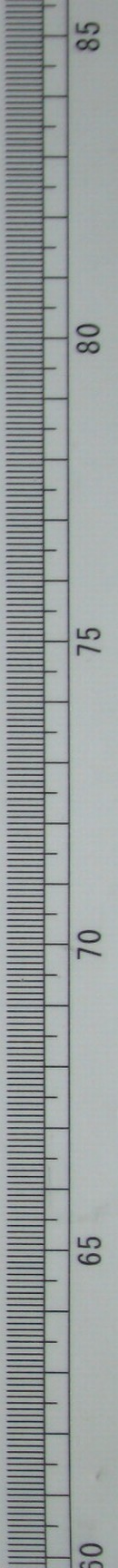




^ 7
4400



~7
4400

4400

上巻の甲申青屋

作者松尾

夜のお宿六十番梅の難波六十番高
女美のねの意おねの意おねの意
松の二城五浪山及のちも室町在く此
娘の意のいあるあまの意あまの意あまの意
月夜にれお宿梅と人のいお宿梅と人のい
ひあまの意あまの意あまの意あまの意あまの意

故
横山有策氏
昭和四年五月
寄贈

吾輩の如きも、
我々の善悪も、
度々の推察も、
病も不癒も、
是乃の如きも、
余亦然らば、
世に於て、

我々の善悪も、
度々の推察も、
病も不癒も、
是乃の如きも、
余亦然らば、
世に於て、

Handwritten text in a cursive script, likely a historical document or manuscript. The text is written in black ink on aged, yellowish paper. The script is dense and fills most of the page. The text is written in a cursive style, characteristic of historical Japanese documents. The characters are somewhat stylized and difficult to read without specialized knowledge. The text is arranged in vertical columns, reading from right to left. The paper shows signs of age, including some staining and discoloration. The overall appearance is that of an old, well-preserved manuscript.

ひげ城を築きて上原城の東をめぐりて今
昔野史の記す如くは昔の金谷の地を
登之有る處に轉じて今に至る迄に
月分は昔の如くは昔の如くは昔の如く
杖屋の城は今も昔の如くは昔の如く
多分は昔の如くは昔の如くは昔の如く
加ふる所の如くは昔の如くは昔の如く
と云ふ所の如くは昔の如くは昔の如く
兼て今も昔の如くは昔の如くは昔の如く
昔の如くは昔の如くは昔の如くは昔の如く
自今も昔の如くは昔の如くは昔の如く
して今も昔の如くは昔の如くは昔の如く
昔の如くは昔の如くは昔の如くは昔の如く
昔の如くは昔の如くは昔の如くは昔の如く
昔の如くは昔の如くは昔の如くは昔の如く

あてあふ人へ宛てての御書は
の御書は宛てての御書は
あてあふ人へ宛てての御書は
の御書は宛てての御書は
あてあふ人へ宛てての御書は
の御書は宛てての御書は
あてあふ人へ宛てての御書は
の御書は宛てての御書は
あてあふ人へ宛てての御書は
の御書は宛てての御書は

あてあふ人へ宛てての御書は
の御書は宛てての御書は
あてあふ人へ宛てての御書は
の御書は宛てての御書は
あてあふ人へ宛てての御書は
の御書は宛てての御書は
あてあふ人へ宛てての御書は
の御書は宛てての御書は
あてあふ人へ宛てての御書は
の御書は宛てての御書は

Handwritten text in a cursive script, likely a historical document or manuscript. The text is written in black ink on aged, yellowish paper. It consists of approximately 15 lines of text, with some lines starting with a large initial letter. The script is highly stylized and difficult to decipher without a key. The text is arranged in two columns, with the right column on the left side of the page and the left column on the right side of the page.

Handwritten text in a cursive script, likely a historical document or manuscript, spanning two pages. The text is written in dark ink on aged, yellowish paper. The script is highly stylized and difficult to decipher, but appears to be a form of shorthand or a specific dialect. The text is arranged in approximately 15 horizontal lines across both pages, with some lines starting with a small circular or diamond-shaped symbol. The right page shows the binding edge of the book.

Handwritten Japanese text in cursive style (sōsho) on two pages. The text is arranged in vertical columns, reading from right to left. The right page contains approximately 10 columns of text, while the left page contains approximately 10 columns. The ink is dark and the paper is aged and yellowed. There are several small annotations and characters interspersed within the main text, including characters like '中' (middle) and '為' (for/cause). The overall appearance is that of a historical manuscript or diary.

Handwritten text in a cursive script, likely a historical document or manuscript. The text is written in black ink on aged, yellowish paper. It consists of approximately 15 lines of text, with some characters appearing to be in a non-Latin script, possibly a form of shorthand or a specific dialect. The writing is dense and fills most of the page area.

Handwritten text in a cursive script, likely a historical document or manuscript. The text is written in a dark ink on aged, yellowish paper. It consists of approximately 10 lines of text, with some characters appearing to be stylized or shorthand. The script is dense and difficult to decipher without a key.

Handwritten text in a cursive script, continuing from the previous page. The text is written in a dark ink on aged, yellowish paper. It consists of approximately 10 lines of text, with some characters appearing to be stylized or shorthand. The script is dense and difficult to decipher without a key.

此部の中
新編の漢字書
の用字を調査せしめ
その結果を報告す

漢字の用字調査の
結果を報告す
漢字の用字調査の
結果を報告す
漢字の用字調査の
結果を報告す

この部は漢字の用字
を調査しその結果を
報告するものである
漢字の用字調査の
結果を報告す
漢字の用字調査の
結果を報告す

Handwritten text in a cursive script, likely a historical document or manuscript. The text is written in dark ink on aged, yellowish paper. It consists of approximately 10 lines of text, with some words appearing to be in a different script or dialect than the surrounding text. The handwriting is fluid and somewhat slanted.

Handwritten text in a cursive script, continuing from the previous page. The text is written in dark ink on aged, yellowish paper. It consists of approximately 10 lines of text, with some words appearing to be in a different script or dialect than the surrounding text. The handwriting is fluid and somewhat slanted.

Handwritten text in a cursive script, likely a historical document or manuscript. The text is arranged in two columns on a single page, with approximately 15 lines of writing per column. The script is dense and characteristic of early modern European cursive. The paper shows signs of age, including yellowing and some staining.

Handwritten text in a cursive script, likely a form of Japanese calligraphy (Shodō). The text is arranged in vertical columns, reading from right to left. The ink is dark on aged, yellowish paper. The script is highly stylized and fluid, characteristic of cursive calligraphy. The text appears to be a continuous passage, possibly a letter or a section of a book. The right page contains approximately 10 columns of text, and the left page contains approximately 10 columns of text. The overall appearance is that of a historical manuscript or a collection of calligraphic works.

Handwritten text in a cursive script, likely a form of shorthand or a specific dialect. The text is arranged in approximately 10 horizontal lines across the page. The characters are highly stylized and interconnected, with some small annotations or marks above certain letters.

Handwritten text in a cursive script, continuing from the previous page. The text is arranged in approximately 10 horizontal lines. The script is consistent with the one on the left page, showing a high degree of fluidity and connection between characters.

Handwritten text in a cursive script, likely a historical document or manuscript, spanning two pages. The text is written in dark ink on aged, yellowish paper. The script is dense and flowing, characteristic of early modern cursive. The right page contains approximately 10 lines of text, while the left page contains approximately 10 lines. The text appears to be a continuous narrative or record, possibly related to military or administrative matters, given the use of terms like 'army' and 'soldiers' in some of the legible words. The handwriting is consistent throughout, suggesting a single scribe. There are some small annotations or corrections in the left margin of the right page.

Handwritten text in a cursive script, likely a musical score or a list of names. The text is written in black ink on aged, yellowish paper. It consists of several lines of dense, flowing characters, possibly representing a sequence of notes or a list of entries. The script is highly stylized and difficult to decipher without a key.

Handwritten text in a cursive script, continuing from the previous page. The text is written in black ink on aged, yellowish paper. It consists of several lines of dense, flowing characters, possibly representing a sequence of notes or a list of entries. The script is highly stylized and difficult to decipher without a key.

Handwritten text in a cursive script, likely a historical document or manuscript. The text is written in dark ink on aged, yellowish paper. It consists of approximately 10 lines of text, with some words appearing to be in a different script or dialect than the surrounding text. The handwriting is fluid and somewhat slanted.

Handwritten text in a cursive script, likely a historical document or manuscript. The text is written in dark ink on aged, yellowish paper. It consists of approximately 10 lines of text, with some words appearing to be in a different script or dialect than the surrounding text. The handwriting is fluid and somewhat slanted.

Handwritten text in a cursive script, likely a historical document or manuscript. The text is written in black ink on aged, yellowish paper. It consists of approximately 10 lines of text, with some characters marked with red dots or small red annotations. The script is dense and flowing, characteristic of a historical cursive style.

Handwritten text in a cursive script, continuing from the previous page. The text is written in black ink on aged, yellowish paper. It consists of approximately 10 lines of text, with some characters marked with red dots or small red annotations. The script is dense and flowing, characteristic of a historical cursive style.

Handwritten text in a cursive script, likely a medieval manuscript. The text is written in black ink on aged, yellowish paper. It consists of approximately 10 lines of text. Red ink is used for decorative initials and accents throughout the page.

Handwritten text in a cursive script, likely a medieval manuscript. The text is written in black ink on aged, yellowish paper. It consists of approximately 10 lines of text. Red ink is used for decorative initials and accents throughout the page.

Handwritten text in a cursive script, likely a form of shorthand or a specific dialect. The text is arranged in approximately 10 horizontal lines across the page. The characters are dense and interconnected, with some red ink used for accents or corrections.

Handwritten text in a cursive script, similar to the left page. This page contains several lines of text, with prominent red ink markings, including small characters and symbols, interspersed throughout the black ink. The script is highly stylized and appears to be a form of shorthand.

Handwritten text in a cursive script, likely a form of shorthand or a specific dialect. The text is arranged in approximately 10 horizontal lines across the page. The characters are dense and interconnected, with some red ink used for emphasis or correction.

Handwritten text in a cursive script, similar to the left page. It features several lines of dense, flowing characters. Red ink is used for various markings, including dots and lines, possibly indicating specific characters or corrections. The text is written on aged, slightly yellowed paper.

Handwritten text on the left page, featuring dense cursive script in black ink with several red annotations. The text is arranged in approximately five horizontal lines. Red characters and markings are scattered throughout, including some at the top of the page and smaller marks within the lines of text. The paper appears aged and slightly yellowed.

Handwritten text on the right page, continuing the dense cursive script from the left page. It features black ink characters with prominent red annotations. A large red character is visible at the top left of the page, and another is at the top right. The script is highly stylized and fills most of the page area.

三ノ丸に陣取つて居りしに、敵軍は我が陣を
破りて入り、大に戦ひて、我が軍は退き
し。此のとき、敵軍は我が軍を破りて、
大に戦ひて、我が軍は退きし。此のとき、
敵軍は我が軍を破りて、大に戦ひて、
我が軍は退きし。此のとき、敵軍は
我が軍を破りて、大に戦ひて、我が
軍は退きし。此のとき、敵軍は我が
軍を破りて、大に戦ひて、我が軍は
退きし。此のとき、敵軍は我が軍を
破りて、大に戦ひて、我が軍は退きし。
此のとき、敵軍は我が軍を破りて、
大に戦ひて、我が軍は退きし。此の
とき、敵軍は我が軍を破りて、大に
戦ひて、我が軍は退きし。此のとき、
敵軍は我が軍を破りて、大に戦ひて、
我が軍は退きし。此のとき、敵軍は
我が軍を破りて、大に戦ひて、我が
軍は退きし。此のとき、敵軍は我が
軍を破りて、大に戦ひて、我が軍は
退きし。此のとき、敵軍は我が軍を
破りて、大に戦ひて、我が軍は退きし。

我々の陣に侵入し、大に戦ひて、我が軍は
退きし。此のとき、敵軍は我が軍を
破りて、大に戦ひて、我が軍は退きし。
此のとき、敵軍は我が軍を破りて、
大に戦ひて、我が軍は退きし。此の
とき、敵軍は我が軍を破りて、大に
戦ひて、我が軍は退きし。此のとき、
敵軍は我が軍を破りて、大に戦ひて、
我が軍は退きし。此のとき、敵軍は
我が軍を破りて、大に戦ひて、我が
軍は退きし。此のとき、敵軍は我が
軍を破りて、大に戦ひて、我が軍は
退きし。此のとき、敵軍は我が軍を
破りて、大に戦ひて、我が軍は退きし。
此のとき、敵軍は我が軍を破りて、
大に戦ひて、我が軍は退きし。此の
とき、敵軍は我が軍を破りて、大に
戦ひて、我が軍は退きし。此のとき、
敵軍は我が軍を破りて、大に戦ひて、
我が軍は退きし。此のとき、敵軍は
我が軍を破りて、大に戦ひて、我が
軍は退きし。此のとき、敵軍は我が
軍を破りて、大に戦ひて、我が軍は
退きし。此のとき、敵軍は我が軍を
破りて、大に戦ひて、我が軍は退きし。

224
223
コカ
Handwritten text in a cursive script, likely a form of shorthand or a specific dialect. The text is written in black ink on aged paper and includes several red annotations (dots and small characters) interspersed throughout the lines.

Handwritten text in a cursive script, continuing from the previous page. The text is written in black ink on aged paper and includes several red annotations (dots and small characters) interspersed throughout the lines.

Handwritten text in a cursive script, likely a historical document or manuscript. The text is written in black ink on aged, yellowed paper. It consists of several lines of dense, flowing characters, with some red ink used for initials or corrections. The script is highly stylized and difficult to decipher without a key.

Handwritten text in a cursive script, likely a historical document or manuscript. The text is written in black ink on aged, yellowed paper. It consists of several lines of dense, flowing characters, with some red ink used for initials or corrections. The script is highly stylized and difficult to decipher without a key.

Handwritten text in a cursive script, likely a form of shorthand or a specific dialect. The text is arranged in approximately 10 horizontal lines across the left page. The characters are highly stylized and interconnected, with some small annotations or marks above certain characters.

Handwritten text in a cursive script, continuing from the left page. The text is arranged in approximately 10 horizontal lines across the right page. The characters are highly stylized and interconnected, with some small annotations or marks above certain characters.

Handwritten musical notation on the left page, consisting of several staves of notes and rests. The notation is dense and appears to be a single melodic line. There are some small annotations above the notes, possibly indicating fingerings or breath marks.

Handwritten musical notation on the right page, continuing the piece from the left page. It features similar notation with notes, rests, and some markings above the staff. The handwriting is consistent with the left page, suggesting a single scribe.

Handwritten text in a cursive script, likely a historical document or manuscript. The text is written in dark ink on aged, yellowish paper. It consists of approximately 10 lines of text, with some characters appearing to be stylized or possibly representing a specific dialect or language. The script is dense and flowing, with many loops and curves. The text is oriented vertically on the page.

Handwritten text in a cursive script, continuing from the previous page. The text is written in dark ink on aged, yellowish paper. It consists of approximately 10 lines of text, with some characters appearing to be stylized or possibly representing a specific dialect or language. The script is dense and flowing, with many loops and curves. The text is oriented vertically on the page.

Handwritten text in a cursive script, likely a historical document or manuscript, spanning two pages. The text is written in dark ink on aged, yellowish paper. The script is dense and appears to be a form of shorthand or a highly stylized cursive. The text is arranged in approximately 15 horizontal lines across both pages, with some lines starting with a small circular or diamond-shaped symbol. The right page shows signs of wear, including a tear at the top edge.

Handwritten text in a cursive script, likely a historical document or manuscript. The text is written in dark ink on aged, yellowish paper. It consists of approximately 12 lines of dense, flowing characters. The script is highly stylized and difficult to decipher without specialized knowledge of the language or dialect. The text appears to be a continuous passage, possibly a letter or a record of events.

Handwritten text in a cursive script, continuing from the previous page. The text is written in dark ink on aged, yellowish paper. It consists of approximately 12 lines of dense, flowing characters. The script is highly stylized and difficult to decipher without specialized knowledge of the language or dialect. The text appears to be a continuous passage, possibly a letter or a record of events.

Handwritten text in a cursive script, likely a historical document or manuscript. The text is written on aged, yellowed paper and is oriented vertically on the right page of an open book. The script is dense and appears to be a form of shorthand or a specific dialect. The text is written in black ink and is arranged in approximately 12 lines. The first line begins with a large, stylized initial letter, possibly 'D'. The text continues down the page, with some lines showing signs of fading or wear. The overall appearance is that of an old, well-used manuscript.

