

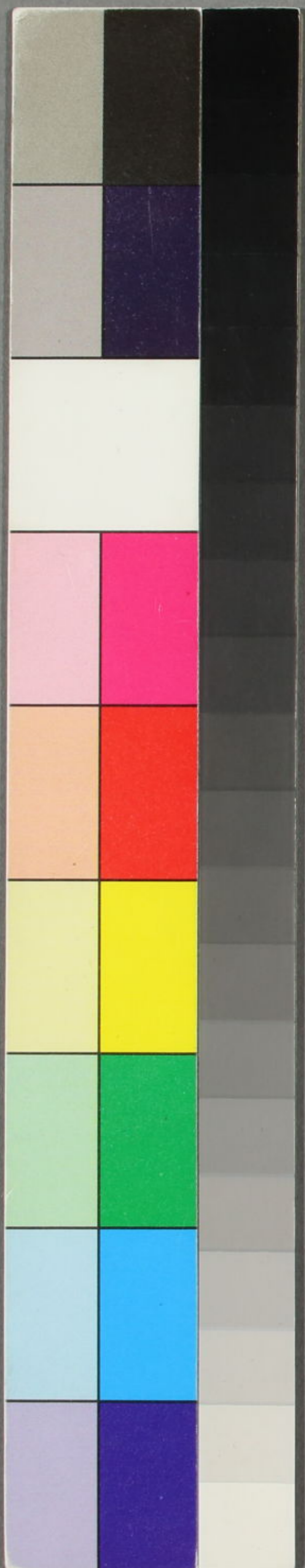
幻遊庵真佛坊先生正笈

三才集

月天句集

辛丑十月分

巴連



巳良月欠

Handwritten Japanese text in a vertical column on the left page, likely a list or record of items.

Handwritten Japanese characters arranged in a grid-like pattern, possibly a classification or index.

三杯抄一抄の巻右系十五中ハ根州系... 山外有... 山外有...

巳良月欠

Handwritten Japanese text in a vertical column on the right page, continuing the list or record.

Handwritten Japanese characters arranged in a grid-like pattern, similar to the left page.

Handwritten Japanese text at the bottom of the right page, similar to the left page.

Handwritten Japanese text, likely a list or inventory, covering the upper two-thirds of the page.

Bottom section of handwritten text on the right page, possibly a summary or key.

Bottom section of handwritten text on the right page, continuing the list or notes.

位五鳥之部

Main body of handwritten Japanese text on the left page, organized into columns.

Bottom section of handwritten text on the left page, possibly a summary or key.

Bottom section of handwritten text on the left page, continuing the list or notes.

己巳年

日

三

Main handwritten text on the right page, consisting of approximately 25 vertical columns of cursive Japanese characters.

A row of small, neatly written characters, likely a list or index, located below the main text on the right page.

A second row of small, neatly written characters, continuing the list or index from the row above.

鈴並お島之部

Main handwritten text on the left page, consisting of approximately 25 vertical columns of cursive Japanese characters.

A row of small, neatly written characters, likely a list or index, located below the main text on the left page.

A second row of small, neatly written characters, continuing the list or index from the row above.

及の... 母を...

下... 空...

つ... 向... 松...

大... 集... 天...

入... の...

白... 兩...

著... の...

巴... 十...

急... の...

佛... 坊...

急... 佛... 坊...



特別
15
6651
27
早稲田大学図書館