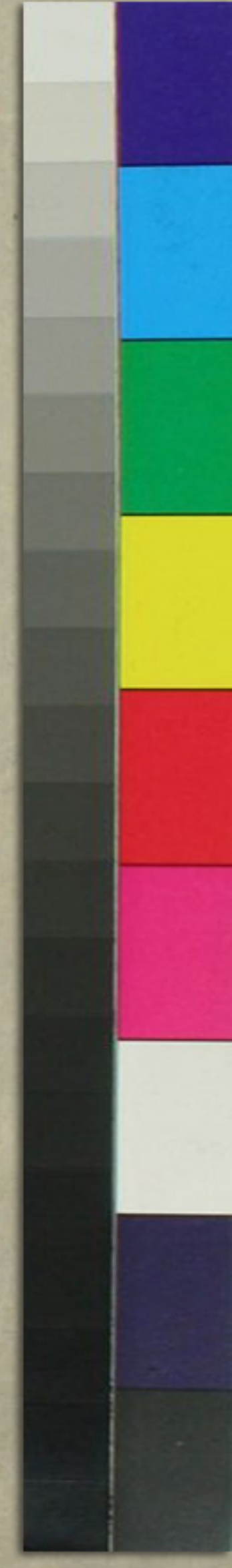


Handwritten Japanese text in cursive (sōsho) style, consisting of approximately 15 vertical columns of characters. The text is dense and fluid, typical of a personal letter or a diary entry. The characters are black ink on aged, slightly yellowed paper.



Handwritten Japanese text in cursive style (sōsho), consisting of approximately 15 vertical columns of characters. The text is dense and fluid, characteristic of traditional Japanese calligraphy. The characters are written in black ink on aged, slightly yellowed paper. The columns are arranged from right to left, with the rightmost column being the most complete and the leftmost column being partially cut off. The overall appearance is that of a personal letter or a private note.

老の...
心...
三...
...
...
...
...
...
...
...