



水尾院御書

Main body of handwritten Japanese text in cursive style, consisting of approximately 12 vertical columns of characters.

水尾院御書

Main body of handwritten Japanese text in cursive style, consisting of approximately 12 vertical columns of characters.



水尾院抄

Handwritten text in a cursive style, likely a musical score or a list of items. The text is arranged in approximately 10 horizontal lines. The characters are dense and fluid, characteristic of medieval Japanese calligraphy. There are several large, stylized characters that appear to be section markers or specific notes. The paper shows signs of age, including some staining and discoloration.

Handwritten text in a cursive style, similar to the top page. The text is arranged in approximately 10 horizontal lines. The characters are dense and fluid, characteristic of medieval Japanese calligraphy. There are several large, stylized characters that appear to be section markers or specific notes. The paper shows signs of age, including some staining and discoloration.

寛文五年梅天初四日
 奉書寫一字三礼般若心経一卷茲切徳
 回向 二尊以祈慈母頓證菩提伏冀
 昭鑑
 南無本師大覚釋迦如来
 南無大慈大悲救苦觀世音菩薩

寛文五年梅天初四日

特進藤原資慶敬白

此の巻に
 般若心経
 一字三礼
 奉書寫
 茲切徳
 回向
 二尊以
 祈慈母
 頓證菩
 提伏冀
 昭鑑
 南無本
 師大覚
 釋迦如
 来
 南無大
 慈大悲
 救苦觀
 世音菩
 薩

Handwritten text in a cursive script, likely a historical document or manuscript. The text is arranged in several lines, with some words appearing to be in a different language or dialect. The script is dense and difficult to decipher without specialized knowledge.

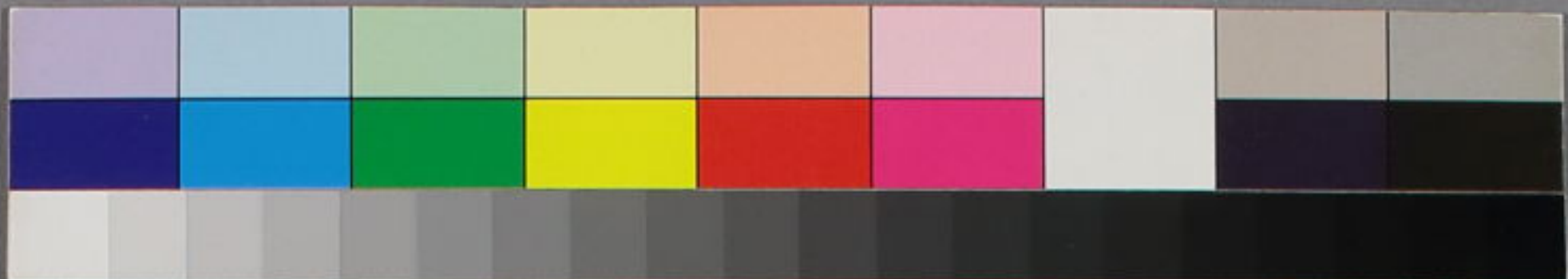
Handwritten text in a cursive script, similar to the one on the right page. This page features several lines of text, with some words highlighted in red ink. The script is dense and difficult to decipher without specialized knowledge.

Handwritten text in a cursive script, possibly a list or account, with some red ink markings.

Main body of handwritten text in a cursive script, organized into several columns and rows, possibly representing a ledger or account.

Handwritten text on the left side of the page, including some numbers and cursive script.

Handwritten text in Arabic script, arranged in vertical columns. The text is written on aged, yellowed paper with visible water damage and stains. The script is dense and appears to be a form of Arabic calligraphy or a specific dialect. The columns are roughly parallel to each other, with some lines crossing between them. The ink is dark, and the overall appearance is that of an old manuscript page.



反水尾院御書

Handwritten Japanese text in cursive style, arranged in vertical columns on the left page of the manuscript.



天通記
追記

特別
A4
8199



特別
4
8199

天通記
漢書

天通記
漢書





烏丸資慶自筆歌集

寛文五年頃
烏丸家舊蔵

特別
84
8199



