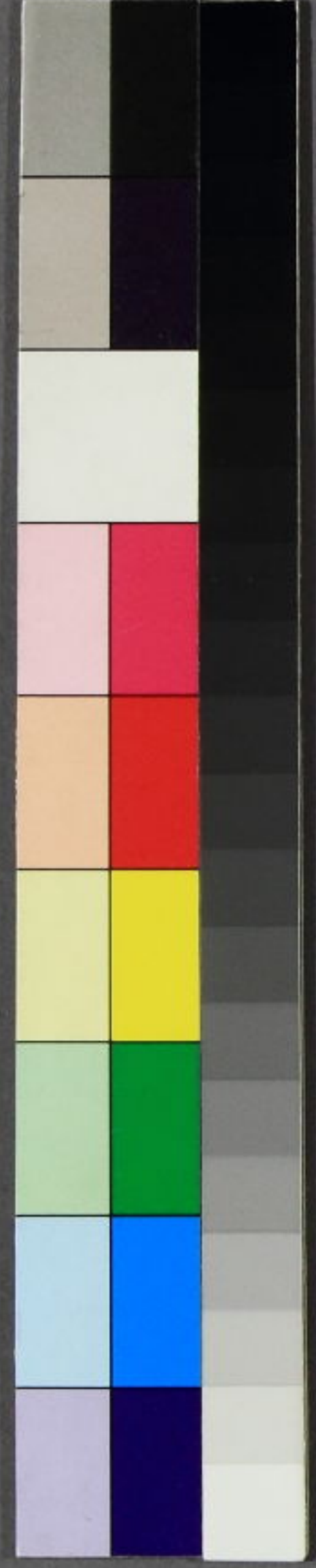
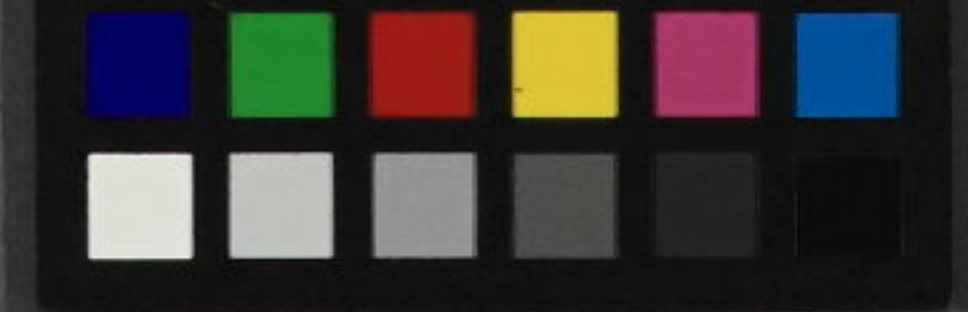


Handwritten text in a cursive script, likely a historical document or manuscript. The text is written in dark ink on aged, yellowish paper. It consists of several lines of text, with some characters appearing to be in a non-Latin script, possibly representing a specific dialect or a mix of languages. The handwriting is fluid and characteristic of the 17th or 18th century.



特別
4
8183





特別
^4
8183





後鳥羽天皇四百年御忌御廟表請記

後鳥羽天皇御廟表請記

