

Handwritten text in Arabic script, likely a religious or philosophical treatise, written in black ink on aged paper. The text is arranged in approximately 10 horizontal lines. Several lines begin with a red vertical bar, serving as a section marker. The script is a cursive style characteristic of the Ottoman or Persian periods.



Handwritten characters, possibly a signature or a specific section marker, located at the top of the page.

Handwritten text in Arabic script, continuing from the main body of text on the left side of the page.

橘氏蔵書 (Kitsuki Shoin)



特  
3726

拵  
4  
3726

Handwritten musical notation on the left page, featuring various rhythmic patterns and melodic lines. The notation includes vertical stems, horizontal lines, and some red markings. There are several lines of text, some starting with a vertical line and others with a horizontal line. The handwriting is fluid and characteristic of early modern manuscript notation.

Handwritten musical notation on the right page, continuing the piece from the left page. It features similar rhythmic and melodic patterns. There are several lines of text, some starting with a vertical line and others with a horizontal line. The handwriting is consistent with the left page. There are some red markings and a few lines of text that appear to be part of the musical score.

Small handwritten notes in the top right corner of the right page, possibly providing performance instructions or commentary. The text is written in a smaller, more compact script.

Small handwritten notes at the bottom right of the right page, possibly providing performance instructions or commentary. The text is written in a smaller, more compact script.

Handwritten text in Arabic script, consisting of approximately 10 lines. The script is cursive and includes several red ink markings, likely used for emphasis or as part of a specific dialect or style.

Handwritten text in Arabic script, continuing from the previous page. It also features cursive handwriting and red ink markings, with some lines appearing to be separate entries or sections.

Handwritten text in Arabic script, starting with a large initial letter.

又上件の如く

Handwritten text in Arabic script, including a large initial letter.

Handwritten text in Arabic script, starting with a large initial letter.

Handwritten text in Arabic script, including a large initial letter.

又

Handwritten text in Arabic script, including a large initial letter.

Handwritten text in Arabic script, including a large initial letter.

Handwritten text in Arabic script, including a large initial letter.

Handwritten text in Arabic script, including a large initial letter.

Handwritten text in Arabic script, including a large initial letter.

Handwritten text in cursive script, likely a list or index of items, with red markings above certain characters.

Handwritten text, possibly a section header or a specific item name.

Handwritten text, possibly a section header or a specific item name.

Handwritten text in cursive script, likely a list or index of items, with red markings above certain characters.

Handwritten text, possibly a section header or a specific item name.

Handwritten text, possibly a section header or a specific item name.

Handwritten text, possibly a section header or a specific item name.

Handwritten text in cursive script, likely a list or index of items, with red markings above certain characters.

Handwritten text, possibly a section header or a specific item name.

Handwritten text, possibly a section header or a specific item name.

Handwritten text in cursive script, likely a list or index of items, with red markings above certain characters.

Handwritten text, possibly a section header or a specific item name.

Handwritten text, possibly a section header or a specific item name.

Handwritten text in cursive script, likely a list or index of items, with red markings above certain characters.

又  
社  
又  
又

又  
又  
又

又

又  
又  
又  
又  
又  
又  
又  
又

又

又

بسم الله الرحمن الرحيم  
الحمد لله الذي هدانا لهذا  
ما كنا لنهتدي لولا أن هدانا الله  
والحمد لله رب العالمين  
الحمد لله الذي هدانا لهذا  
ما كنا لنهتدي لولا أن هدانا الله  
والحمد لله رب العالمين

الحمد لله

والحمد لله رب العالمين  
الحمد لله الذي هدانا لهذا  
ما كنا لنهتدي لولا أن هدانا الله  
والحمد لله رب العالمين

والحمد لله رب العالمين

والحمد لله رب العالمين

والحمد لله رب العالمين

والحمد لله رب العالمين

والحمد لله رب العالمين

والحمد لله رب العالمين

والحمد لله رب العالمين

والحمد لله رب العالمين

والحمد لله رب العالمين

والحمد لله رب العالمين



وہو کہ

وہو کہ  
وہو کہ

وہو کہ

وہو کہ

وہو کہ

وہو کہ

وہو کہ

وہو کہ

وہو کہ

وہو کہ

وہو کہ

وہو کہ

وہو کہ

وہو کہ

وہو کہ

وہو کہ

وہو کہ

وہو کہ

وہو کہ



の島に 雲の影を 照らす 月夜に 花の影を 照らす 月夜に  
花の影を 照らす 月夜に 花の影を 照らす 月夜に  
花の影を 照らす 月夜に 花の影を 照らす 月夜に  
花の影を 照らす 月夜に 花の影を 照らす 月夜に

白氏文集 琴詩酒友皆抛我 雪月花時 寂憶君  
花の影を 照らす 月夜に 花の影を 照らす 月夜に  
花の影を 照らす 月夜に 花の影を 照らす 月夜に  
花の影を 照らす 月夜に 花の影を 照らす 月夜に

白氏文集 琴詩酒友皆抛我 雪月花時 寂憶君  
花の影を 照らす 月夜に 花の影を 照らす 月夜に  
花の影を 照らす 月夜に 花の影を 照らす 月夜に  
花の影を 照らす 月夜に 花の影を 照らす 月夜に

花の影を 照らす 月夜に 花の影を 照らす 月夜に  
花の影を 照らす 月夜に 花の影を 照らす 月夜に  
花の影を 照らす 月夜に 花の影を 照らす 月夜に  
花の影を 照らす 月夜に 花の影を 照らす 月夜に

花の影を 照らす 月夜に 花の影を 照らす 月夜に  
花の影を 照らす 月夜に 花の影を 照らす 月夜に  
花の影を 照らす 月夜に 花の影を 照らす 月夜に  
花の影を 照らす 月夜に 花の影を 照らす 月夜に

花の影を 照らす 月夜に 花の影を 照らす 月夜に  
花の影を 照らす 月夜に 花の影を 照らす 月夜に  
花の影を 照らす 月夜に 花の影を 照らす 月夜に  
花の影を 照らす 月夜に 花の影を 照らす 月夜に

85  
Handwritten text in cursive script, starting with a large initial 'S'.

Handwritten text in cursive script, continuing the previous line.

Handwritten text in cursive script, continuing the previous line.

Handwritten text in cursive script, continuing the previous line.

Handwritten text in cursive script, continuing the previous line.

Handwritten text in cursive script, continuing the previous line.

Handwritten text in cursive script, continuing the previous line.

Handwritten text in cursive script, continuing the previous line.

Handwritten text in cursive script, continuing the previous line.

Handwritten text in cursive script, continuing the previous line.

Handwritten text in cursive script, continuing the previous line.

Handwritten text in cursive script, starting with a red initial character.

Handwritten text in cursive script, starting with a red initial character.

Handwritten text in cursive script, starting with a red initial character.

Handwritten text in cursive script, starting with a red initial character.

Handwritten text in cursive script, starting with a red initial character.

Handwritten text in cursive script, starting with a red initial character.

Handwritten text in cursive script, starting with a red initial character.

Handwritten text in cursive script, starting with a red initial character.

Handwritten text in cursive script, starting with a red initial character.

Handwritten text in cursive script, starting with a red initial character.

Handwritten text in cursive script, starting with a red initial character.

一 古きこと

古きことなるは

古きことなるは

一 古きこと

古きことなるは

古きことなるは

古きことなるは

古きことなるは

古きことなるは

古きことなるは

古きことなるは

古きことなるは

古きこと

古きことなるは

古きことなるは

古きことなるは

古きことなるは

古きことなるは

古きこと

古きことなるは



一 哉よらりしき

切 *Chigiri*

中 *Nakanaka*

持 *Mochi*

練 *Nen*

を *wo*

比 *Hiji*

谷 *Tani*

一 哉よらりしき



1 2 3 4 5 6 7 8 9 10

1 2 3 4 5 6 7 8 9 10 11 12 13 14 15 16 17 18 19 20

1 2 3 4 5 6 7 8 9 10

1 2 3 4 5 6 7 8 9 10 11 12 13 14 15 16 17 18 19 20

1 2 3 4 5 6 7 8 9 10

1 2 3 4 5 6 7 8 9 10 11 12 13 14 15 16 17 18 19 20

1 2 3 4 5 6 7 8 9 10

1 2 3 4 5 6 7 8 9 10 11 12 13 14 15 16 17 18 19 20

1 2 3 4 5 6 7 8 9 10 11 12 13 14 15 16 17 18 19 20

1 2 3 4 5 6 7 8 9 10 11 12 13 14 15 16 17 18 19 20

1 2 3 4 5 6 7 8 9 10 11 12 13 14 15 16 17 18 19 20

1 2 3 4 5 6 7 8 9 10 11 12 13 14 15 16 17 18 19 20

1 2 3 4 5 6 7 8 9 10 11 12 13 14 15 16 17 18 19 20

1 2 3 4 5 6 7 8 9 10 11 12 13 14 15 16 17 18 19 20

1 2 3 4 5 6 7 8 9 10 11 12 13 14 15 16 17 18 19 20

1 2 3 4 5 6 7 8 9 10 11 12 13 14 15 16 17 18 19 20

1 2 3 4 5 6 7 8 9 10 11 12 13 14 15 16 17 18 19 20

1 2 3 4 5 6 7 8 9 10 11 12 13 14 15 16 17 18 19 20

中載

1 2 3 4 5 6 7 8 9 10

1 2 3 4 5 6 7 8 9 10









Handwritten text in Arabic script, likely a religious or philosophical treatise. The text is written in a cursive style and includes several lines of prose. The first line begins with a red initial letter, possibly 'ب' (Ba).

Handwritten text in Arabic script, continuing from the previous page. It features a prominent red initial letter, possibly 'ب' (Ba), and continues with several lines of cursive text.

Handwritten text in Arabic script, continuing from the previous page. It features a prominent red initial letter, possibly 'ب' (Ba), and continues with several lines of cursive text.



Handwritten text in Arabic script, starting with a red initial letter.

Handwritten text in Arabic script, starting with a red initial letter.

Handwritten text in Arabic script, starting with a red initial letter.

Handwritten text in Arabic script, starting with a red initial letter.

Handwritten text in Arabic script, starting with a red initial letter.

Handwritten text in Arabic script, starting with a red initial letter.

Handwritten text in Arabic script, starting with a red initial letter.

Handwritten text in Arabic script, starting with a red initial letter.

Handwritten text in Arabic script, starting with a red initial letter.





... (mirrored) ...

... (mirrored) ...

... (mirrored) ...

... (mirrored) ...

... (mirrored) ...

... (mirrored) ...

... (mirrored) ...

... (mirrored) ...

... (mirrored) ...

... (mirrored) ...

... (mirrored) ...

... (mirrored) ...

... (mirrored) ...

... (mirrored) ...

... (mirrored) ...

... (mirrored) ...

... (mirrored) ...

松の枝の...  
 ...  
 ...  
 ...  
 ...

...  
 ...  
 ...  
 ...  
 ...  
 ...

Handwritten text in Arabic script, first line on the left page.

Handwritten text in Arabic script, second line on the left page.

Handwritten text in Arabic script, third line on the left page.

Handwritten text in Arabic script, fourth line on the left page.

Handwritten text in Arabic script, fifth line on the left page.

Handwritten text in Arabic script, first line on the right page.

Handwritten text in Arabic script, second line on the right page.

Handwritten text in Arabic script, third line on the right page.

Handwritten text in Arabic script, fourth line on the right page.

Handwritten text in Arabic script, fifth line on the right page.



Handwritten musical notation on a single staff.

Handwritten musical notation on a single staff.

Handwritten musical notation on a single staff.

Handwritten musical notation on a single staff.

Handwritten musical notation on a single staff.

Handwritten musical notation on a single staff.

Handwritten musical notation on a single staff.

Handwritten musical notation on a single staff.

Handwritten musical notation on a single staff.

Handwritten musical notation on a single staff.

Handwritten musical notation on a single staff.

Handwritten musical notation on a single staff.

Handwritten musical notation on a single staff.

Handwritten musical notation on a single staff.

Handwritten musical notation on a single staff.

Handwritten musical notation on a single staff.

Handwritten musical notation on a single staff.

に ありて ありて ありて

ありて ありて ありて ありて ありて

ありて ありて ありて

ありて ありて ありて

ありて ありて ありて ありて ありて

ありて ありて ありて

ありて ありて ありて ありて ありて

ありて ありて ありて ありて ありて

ありて ありて ありて ありて ありて

ありて ありて ありて

ありて ありて ありて ありて ありて

ありて ありて ありて

ありて ありて ありて ありて ありて

ありて ありて ありて ありて ありて

ありて ありて ありて ありて ありて

ありて ありて ありて ありて ありて

ありて ありて ありて ありて ありて

ありて ありて ありて ありて ありて

ありて ありて ありて ありて ありて

Handwritten text in a cursive script, likely a musical score or a list of notes, with several red markings above the lines.

Handwritten text, possibly a section header or a specific instruction, with red markings.

Handwritten text in a cursive script, continuing the musical score or list, with red markings.

Handwritten text, possibly a section header or a specific instruction, with red markings.

Handwritten text in a cursive script, continuing the musical score or list, with red markings.

Handwritten text, possibly a section header or a specific instruction, with red markings.

Handwritten text in a cursive script, continuing the musical score or list, with red markings.





持たりては、  
一  
一  
一  
一

一  
一  
一  
一  
一

一  
一  
一  
一  
一  
一

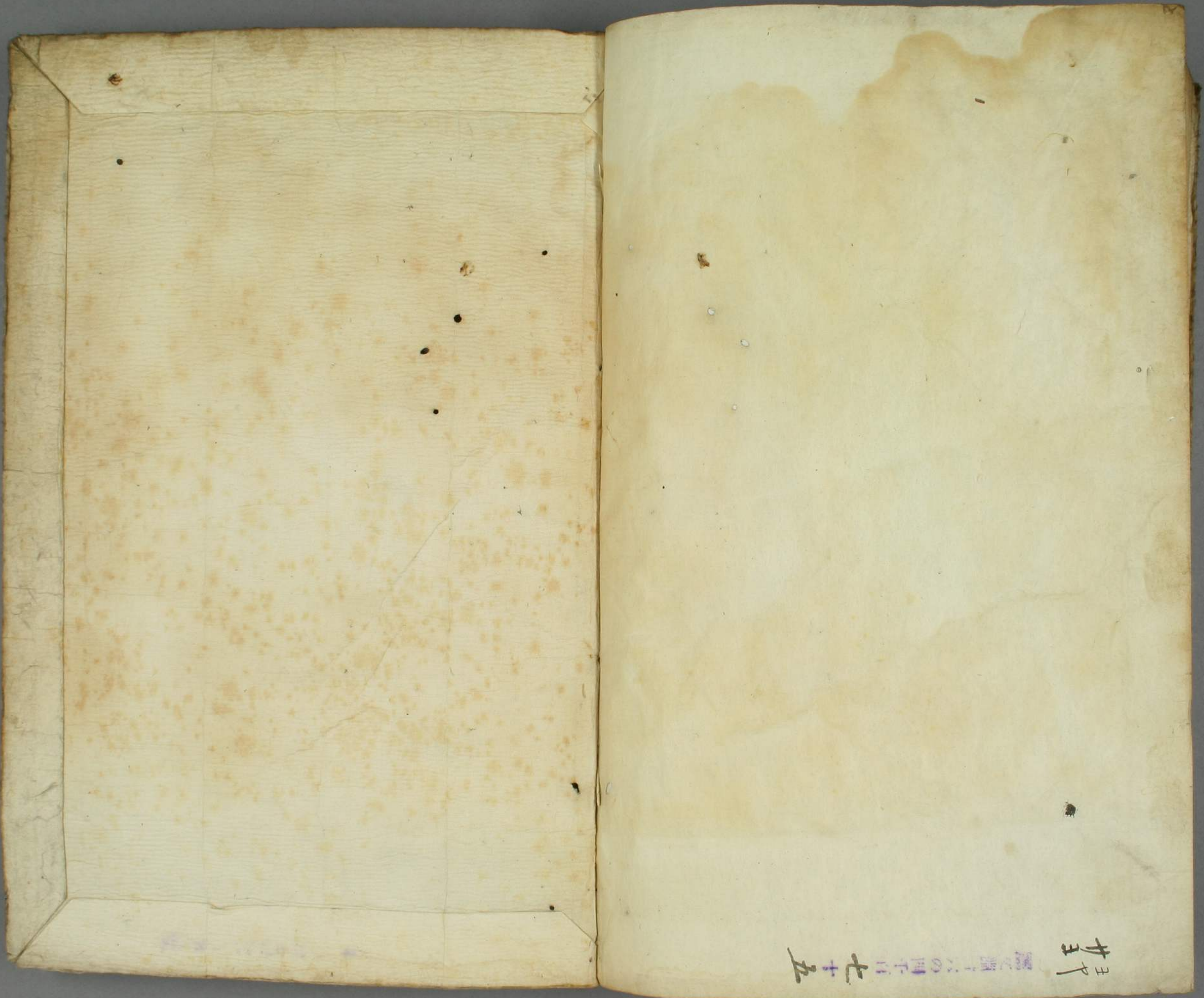
一  
一  
一  
一  
一  
一

一  
今  
三  
神  
臣

多一都之良道よあつ梅月書より伝書入の  
梅月書より伝書入

南山為直





三十一  
廿一  
第百七十五

