



毛志保之録

特別  
1789





芳園

久松の松葉

久松の松葉

すまの松葉

明治四十年九月十八日  
朝倉亀三氏寄贈



連峯の松

信州

松葉

村田

名木の松

一橋

名木の松

信州

Handwritten cursive text in Japanese, including phrases like '久松の松葉' and '連峯の松'.



Handwritten text in cursive script, possibly a list or notes.

多儀旧

新抄本

一板

Handwritten text in cursive script, possibly a list or notes.

多儀本

一板

Handwritten text in cursive script, possibly a list or notes.

多儀本

一板

Handwritten text in cursive script, possibly a list or notes.

多儀本

一板

Handwritten text in cursive script, possibly a list or notes.

多儀本

一板

Handwritten text in cursive script, possibly a list or notes.

多儀本

一板

Handwritten text in cursive script, possibly a list or notes.

多儀本

一板

Handwritten text in cursive script, possibly a list or notes.

多儀本

一板

Handwritten text in cursive script, possibly a list or notes.



一板

一板

此板之字...

一板

此板之字...

一板

此板之字...

一板

此板之字...

一板

一板

此板之字...

一板

一板

此板之字...

一板

此板之字...

一板

此板之字...

一板

一板

此板之字...



200

100

Handwritten cursive text, likely a list or notes.

Handwritten characters, possibly '松' (Pine).

Handwritten cursive text.

Handwritten characters, possibly '松' (Pine).

Handwritten characters, possibly '松' (Pine).

Handwritten cursive text.

Handwritten characters, possibly '松' (Pine).

Handwritten characters, possibly '松' (Pine).

Handwritten cursive text.

Handwritten characters, possibly '松' (Pine).

Handwritten characters, possibly '松' (Pine).

Handwritten cursive text.

Handwritten characters, possibly '松' (Pine).

Handwritten characters, possibly '松' (Pine).

Handwritten cursive text.

Handwritten characters, possibly '松' (Pine).

Handwritten cursive text.

Handwritten characters, possibly '松' (Pine).

Handwritten characters, possibly '松' (Pine).

Handwritten cursive text.

Handwritten characters, possibly '松' (Pine).

Handwritten characters, possibly '松' (Pine).

Handwritten cursive text.



At the end of the year

6

the first of the year

7

the second of the year

8

the third of the year

9

the fourth of the year

10

the fifth of the year

11

the sixth of the year

12

13

the seventh of the year

14

the eighth of the year

15

the ninth of the year

16

the tenth of the year

17

the eleventh of the year

18

the twelfth of the year

19

the thirteenth of the year

20



no part of the ...

to the ...

...

...

...

...

...

...

...

...

...

...

...

...

...

...

...

...



Handwritten text in cursive script, likely a list or entry.

Handwritten characters, possibly a name or title.

Handwritten characters at the bottom of the first entry.

Handwritten text in cursive script, likely a list or entry.

Handwritten characters, possibly a name or title.

Handwritten characters at the bottom of the second entry.

Handwritten text in cursive script, likely a list or entry.

Handwritten characters, possibly a name or title.

Small handwritten character at the bottom of the third entry.

Handwritten text in cursive script, likely a list or entry.

Handwritten characters, possibly a name or title.

Handwritten characters at the bottom of the fourth entry.

Handwritten text in cursive script, likely a list or entry.

Handwritten characters at the bottom of the fifth entry.

Handwritten characters, possibly a name or title.

Handwritten characters at the bottom of the sixth entry.

Handwritten characters, possibly a name or title.

Handwritten text in cursive script, likely a list or entry.

Handwritten characters, possibly a name or title.

Handwritten characters at the bottom of the seventh entry.

Handwritten text in cursive script, likely a list or entry.

Handwritten characters, possibly a name or title.

Handwritten characters at the bottom of the eighth entry.

Handwritten text in cursive script, likely a list or entry.

Handwritten characters, possibly a name or title.

Small handwritten characters at the top right of the page.



Handwritten text in cursive script, possibly a list or account entry.

Handwritten word or phrase, possibly a name or title.

Handwritten text in cursive script, possibly a list or account entry.

Handwritten word or phrase, possibly a name or title.

Handwritten text in cursive script, possibly a list or account entry.

Handwritten word or phrase, possibly a name or title.

Handwritten text in cursive script, possibly a list or account entry.

Handwritten word or phrase, possibly a name or title.

Handwritten word or phrase, possibly a name or title.

Handwritten text in cursive script, possibly a list or account entry.

Handwritten word or phrase, possibly a name or title.

Handwritten text in cursive script, possibly a list or account entry.

Handwritten word or phrase, possibly a name or title.

Handwritten text in cursive script, possibly a list or account entry.

Handwritten text in cursive script, possibly a list or account entry.

Handwritten word or phrase, possibly a name or title.

Handwritten text in cursive script, possibly a list or account entry.

Handwritten word or phrase, possibly a name or title.

Handwritten word or phrase, possibly a name or title.



Handwritten text in cursive script, likely a list or account.

Handwritten characters, possibly '五' (5).

Handwritten text in cursive script, continuing the list or account.

Handwritten characters, possibly '五' (5).

Handwritten text in cursive script, continuing the list or account.

Handwritten characters, possibly '五' (5).

Handwritten text in cursive script, continuing the list or account.

Handwritten characters, possibly '五' (5).

Handwritten text in cursive script, continuing the list or account.

Handwritten characters, possibly '五' (5).

Handwritten text in cursive script, continuing the list or account.

Handwritten characters, possibly '五' (5).

Handwritten text in cursive script, continuing the list or account.

Handwritten characters, possibly '五' (5).

Handwritten text in cursive script, continuing the list or account.

Handwritten characters, possibly '五' (5).

Handwritten text in cursive script, continuing the list or account.

Handwritten characters, possibly '五' (5).



Handwritten text in cursive script, likely a list or account.

Handwritten characters, possibly a date or specific entry.

Handwritten text in cursive script, continuing the list or account.

Handwritten characters, possibly a date or specific entry.

Handwritten text in cursive script, continuing the list or account.

Handwritten characters, possibly a date or specific entry.

Handwritten text in cursive script, continuing the list or account.

Handwritten characters, possibly a date or specific entry.

Handwritten text in cursive script, continuing the list or account.

Handwritten characters, possibly a date or specific entry.

Handwritten text in cursive script, continuing the list or account.

Handwritten characters, possibly a date or specific entry.

Handwritten text in cursive script, continuing the list or account.

Handwritten text in cursive script, continuing the list or account.

Handwritten characters, possibly a date or specific entry.

Handwritten text in cursive script, continuing the list or account.

Handwritten characters, possibly a date or specific entry.

Handwritten text in cursive script, continuing the list or account.



Handwritten musical notation on a single staff.

Handwritten text below the first staff.

Handwritten text below the second staff.

Handwritten musical notation on a single staff.

Handwritten text below the second staff.

Handwritten musical notation on a single staff.

Handwritten text below the second staff.

Handwritten musical notation on a single staff.

Handwritten text below the second staff.

Handwritten musical notation on a single staff.

文三

Handwritten text at the bottom left of the page.

Handwritten text below the second staff.

Handwritten musical notation on a single staff.

Handwritten text below the second staff.

Handwritten text at the bottom left of the page.

Handwritten musical notation on a single staff.

Handwritten text at the bottom left of the page.

Handwritten text below the second staff.

Handwritten musical notation on a single staff.

Handwritten text at the bottom left of the page.

Handwritten text below the second staff.

Handwritten musical notation on a single staff.

Handwritten text below the second staff.



Handwritten cursive text, likely a list or notes.

Handwritten cursive text, possibly a name or title.

Handwritten cursive text, likely a list or notes.

Handwritten cursive text, possibly a name or title.

Handwritten cursive text, likely a list or notes.

Handwritten cursive text, possibly a name or title.

Handwritten cursive text, likely a list or notes.

Handwritten cursive text, possibly a name or title.

Handwritten cursive text, likely a list or notes.

Handwritten cursive text, possibly a name or title.

Handwritten cursive text, likely a list or notes.

Handwritten cursive text, possibly a name or title.

Handwritten cursive text, likely a list or notes.

Handwritten cursive text, possibly a name or title.

Handwritten cursive text, likely a list or notes.

Handwritten cursive text, possibly a name or title.

Handwritten cursive text, likely a list or notes.

Handwritten cursive text, possibly a name or title.

Handwritten cursive text, possibly a name or title.



江ノ上

江ノ上ノ水

江ノ上

江ノ上ノ水

江ノ上

江ノ上ノ水

江ノ上

江ノ上ノ水

江ノ上

江ノ上ノ水

江ノ上

江ノ上ノ水

江ノ上

江ノ上ノ水

江ノ上

江ノ上ノ水

江ノ上

江ノ上ノ水



Handwritten cursive text, likely a name or title.

Handwritten characters, possibly a date or location.

Handwritten characters at the bottom left.

Handwritten cursive text, possibly a name.

Handwritten characters at the bottom left.

Handwritten characters, possibly a date or location.

Handwritten cursive text, possibly a name.

Handwritten characters at the bottom left.

Handwritten characters, possibly a date or location.

Handwritten cursive text, possibly a name.

Handwritten characters at the bottom left.

Handwritten characters, possibly a date or location.

Handwritten cursive text, possibly a name.

Handwritten characters at the bottom left.

Handwritten characters at the bottom left.

Handwritten characters, possibly a date or location.

Handwritten cursive text, possibly a name.

Handwritten characters at the bottom left.

Handwritten characters, possibly a date or location.

Handwritten cursive text, possibly a name.

Handwritten characters at the bottom left.

Handwritten characters, possibly a date or location.

Handwritten cursive text, possibly a name.

Handwritten characters at the bottom left.

Handwritten characters, possibly a date or location.

Handwritten cursive text, possibly a name.

Handwritten characters at the bottom left.

Handwritten characters, possibly a date or location.



Handwritten text in cursive script, likely a list or account entry.

Handwritten word or phrase, possibly a name or title.

Handwritten text in cursive script, continuing the list or account entry.

Handwritten word or phrase, possibly a name or title.

Handwritten text in cursive script, continuing the list or account entry.

Handwritten word or phrase, possibly a name or title.

Handwritten text in cursive script, continuing the list or account entry.

Handwritten text in cursive script, possibly a note or description.

Handwritten text in cursive script, continuing the list or account entry.

Handwritten word or phrase, possibly a name or title.

Handwritten text in cursive script, continuing the list or account entry.

Handwritten word or phrase, possibly a name or title.

Handwritten text in cursive script, continuing the list or account entry.

Handwritten word or phrase, possibly a name or title.

Handwritten text in cursive script, continuing the list or account entry.

Handwritten word or phrase, possibly a name or title.

Handwritten text in cursive script, continuing the list or account entry.

Handwritten word or phrase, possibly a name or title.



秋

秋

秋の風は涼しくも  
あつた

秋の空は青くも  
あつた

秋

秋

秋の雨は静かにも  
あつた

秋

秋の月が綺麗にも  
あつた

秋

秋

秋の夜は静かにも  
あつた

秋

秋

秋の朝は爽やかにも  
あつた

秋

秋

秋の夕は静寂にも  
あつた

秋

秋

秋の空は澄やかにも  
あつた

秋

秋

秋の風は涼しくも  
あつた



~~~~~のちと~~~~

秋夜

~~~~~のちと~~~~

秋別意

~~~~~のちと~~~~

秋意

~~~~~のちと~~~~

秋意

~~~~~のちと~~~~

秋意

~~~~~のちと~~~~

秋意

~~~~~のちと~~~~

秋意

~~~~~のちと~~~~

秋意

~~~~~のちと~~~~

秋意



Handwritten cursive text on the left side of the top page.

池

Handwritten cursive text on the right side of the top page.

Handwritten characters, possibly a signature or date.

Handwritten cursive text on the left side of the bottom page.

Handwritten characters, possibly a signature or date.

Handwritten cursive text on the right side of the bottom page.

Handwritten characters, possibly a signature or date.

Handwritten cursive text on the left side of the top page.

Handwritten characters, possibly a signature or date.

Handwritten cursive text on the right side of the top page.

Handwritten characters, possibly a signature or date.

Handwritten cursive text on the left side of the bottom page.

Handwritten characters, possibly a signature or date.

Handwritten cursive text on the right side of the bottom page.

Handwritten characters, possibly a signature or date.

Handwritten cursive text on the left side of the top page.

Handwritten characters, possibly a signature or date.

Handwritten cursive text on the right side of the top page.



Handwritten text in cursive script, likely a list or entry.

因原

Handwritten text in cursive script, likely a list or entry.

酒

Handwritten text in cursive script, likely a list or entry.

海

Handwritten text in cursive script, likely a list or entry.

事

Handwritten text in cursive script, likely a list or entry.

Handwritten text in cursive script, likely a list or entry.

橋

中

Handwritten text in cursive script, likely a list or entry.

松

Handwritten text in cursive script, likely a list or entry.

山

Handwritten text in cursive script, likely a list or entry.

十

Small handwritten notes or marks at the bottom right of the page.



Handwritten cursive text at the top of the left page.

Handwritten characters, possibly a name or title.

Handwritten cursive text in the middle of the left page.

Handwritten characters, possibly a name or title.

Handwritten cursive text in the middle of the left page.

Handwritten characters, possibly a name or title.

Handwritten cursive text at the bottom of the left page.

Handwritten characters, possibly a name or title.

Handwritten cursive text at the bottom of the left page.

Small handwritten characters at the bottom of the left page.

Large handwritten characters, possibly a name or title.

Handwritten cursive text at the top of the right page.

Handwritten characters, possibly a name or title.

Handwritten cursive text in the middle of the right page.

Handwritten characters, possibly a name or title.

Handwritten cursive text in the middle of the right page.

Handwritten characters, possibly a name or title.

Handwritten cursive text at the bottom of the right page.

Handwritten characters, possibly a name or title.

Small handwritten characters at the bottom of the right page.



Handwritten text in cursive script, likely a list or entry.

Handwritten characters, possibly a date or specific note.

Handwritten text in cursive script, continuing the list or entry.

Handwritten characters, possibly a date or specific note.

Handwritten text in cursive script, continuing the list or entry.

Handwritten characters, possibly a date or specific note.

Handwritten text in cursive script, continuing the list or entry.

Handwritten characters, possibly a date or specific note.

Handwritten text in cursive script, continuing the list or entry.

Handwritten characters, possibly a date or specific note.

Handwritten text in cursive script, continuing the list or entry.

Handwritten characters, possibly a date or specific note.

Handwritten text in cursive script, continuing the list or entry.

Handwritten characters, possibly a date or specific note.

Handwritten text in cursive script, continuing the list or entry.

Handwritten characters, possibly a date or specific note.

Handwritten text in cursive script, continuing the list or entry.

Handwritten characters, possibly a date or specific note.



Handwritten cursive text, likely a name or title.

Handwritten characters, possibly a date or specific identifier.

Handwritten cursive text, possibly a name or title.

Handwritten characters, possibly a date or specific identifier.

Handwritten cursive text, possibly a name or title.

Handwritten characters, possibly a date or specific identifier.

Handwritten cursive text, possibly a name or title.

Handwritten characters, possibly a date or specific identifier.

Handwritten cursive text, possibly a name or title.

Handwritten characters, possibly a date or specific identifier.

Handwritten cursive text, possibly a name or title.

Handwritten characters, possibly a date or specific identifier.

Handwritten cursive text, possibly a name or title.

Handwritten characters, possibly a date or specific identifier.

Handwritten cursive text, possibly a name or title.

Handwritten characters, possibly a date or specific identifier.

Handwritten characters, possibly a date or specific identifier.



Handwritten cursive text, likely a name or title.

Handwritten characters, possibly a date or location.

Handwritten cursive text, possibly a name or title.

Handwritten characters, possibly a date or location.

Handwritten cursive text, possibly a name or title.

Handwritten characters, possibly a date or location.

Handwritten cursive text, possibly a name or title.

Handwritten characters, possibly a date or location.

Handwritten cursive text, possibly a name or title.

Handwritten characters, possibly a date or location.

Handwritten characters, possibly a date or location.

Handwritten cursive text, possibly a name or title.

Handwritten characters, possibly a date or location.

Handwritten cursive text, possibly a name or title.

Handwritten characters, possibly a date or location.

Handwritten cursive text, possibly a name or title.

Handwritten characters, possibly a date or location.

Handwritten cursive text, possibly a name or title.

Handwritten characters, possibly a date or location.



Handwritten text in cursive script, likely a list or entry.

Handwritten characters, possibly a name or title.

Handwritten text in cursive script, continuing the list or entry.

Handwritten characters, possibly a name or title.

Handwritten characters, possibly a name or title.

Handwritten text in cursive script, continuing the list or entry.

Handwritten characters, possibly a name or title.

Handwritten text in cursive script, continuing the list or entry.

Handwritten characters, possibly a name or title.

Handwritten characters, possibly a name or title.

Handwritten text in cursive script, continuing the list or entry.

Handwritten characters, possibly a name or title.

Handwritten characters, possibly a name or title.

Handwritten text in cursive script, continuing the list or entry.

Handwritten characters, possibly a name or title.

Handwritten characters, possibly a name or title.

Handwritten text in cursive script, continuing the list or entry.

Handwritten characters, possibly a name or title.

Handwritten characters, possibly a name or title.

Handwritten text in cursive script, continuing the list or entry.

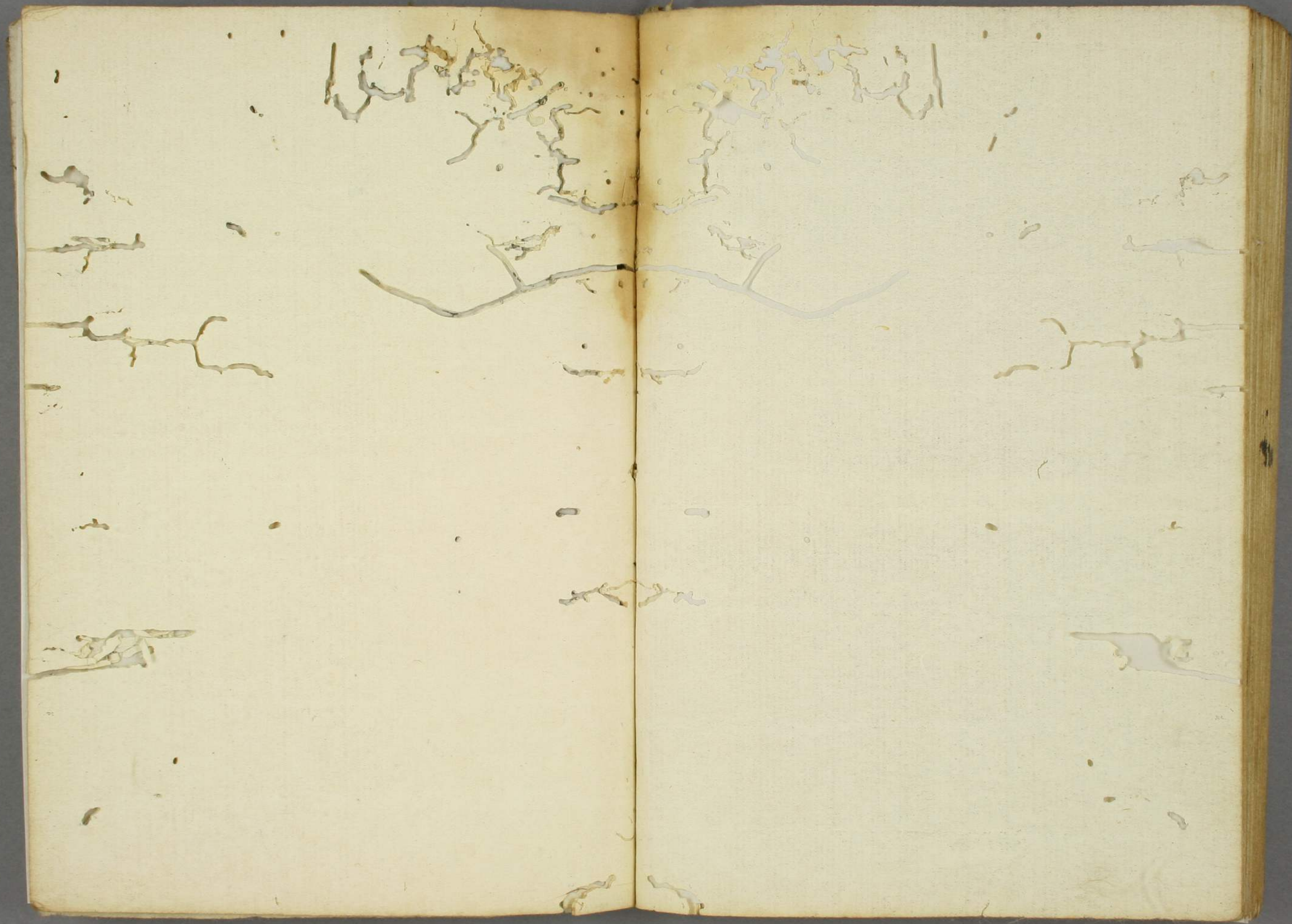
Handwritten characters, possibly a name or title.

Handwritten characters, possibly a name or title.

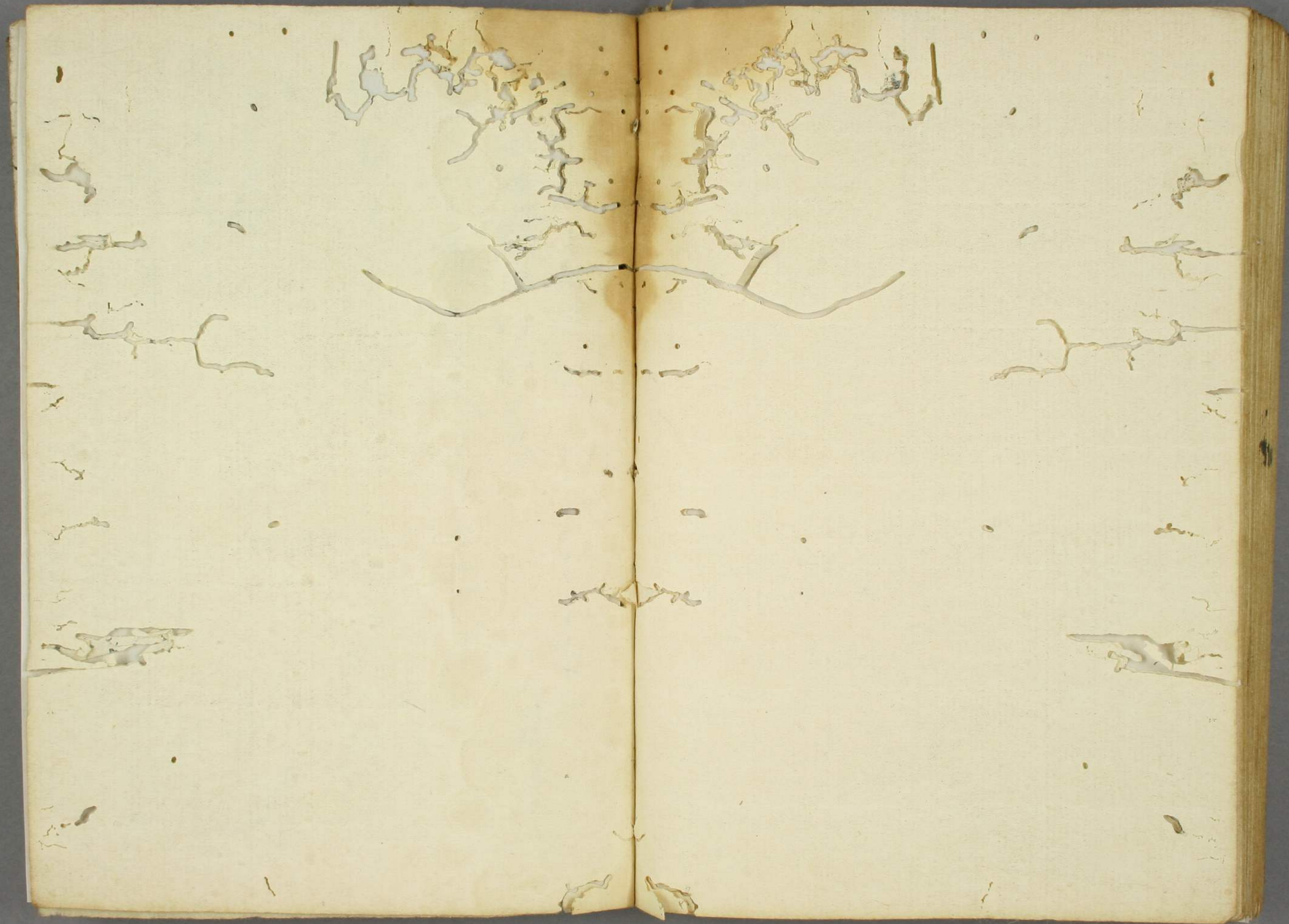














*[Faint, mostly illegible handwritten text in cursive script, possibly a list or account.]*

*[Faint, mostly illegible handwritten text in cursive script, possibly a list or account.]*



Handwritten text at the top left of the left page, possibly a date or header.

Handwritten text below the top left header on the left page.

Handwritten text in the middle section of the left page.

Handwritten text in the bottom section of the left page, including a list of items.

Main body of handwritten text on the left page, organized in several columns.

Handwritten text at the top of the right page, including a large heading.

Main body of handwritten text on the right page, continuing the list or notes.



集  
卷之  
五

...

...

...

...



Handwritten musical notation on a piece of aged, yellowed paper with horizontal lines. The notation is written in dark ink and consists of several staves of music. The script is highly stylized and cursive, characteristic of early manuscript notation. The paper shows signs of wear, including creases and some staining, particularly near the top edge. The notation appears to be a single melodic line, possibly for a lute or similar stringed instrument, given the historical context of such manuscripts. The ink is dark and the paper is a light tan color.



