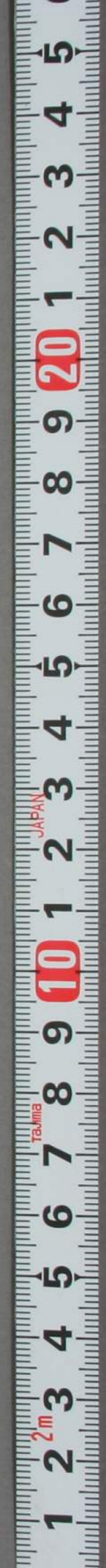


楊子

利4
1788



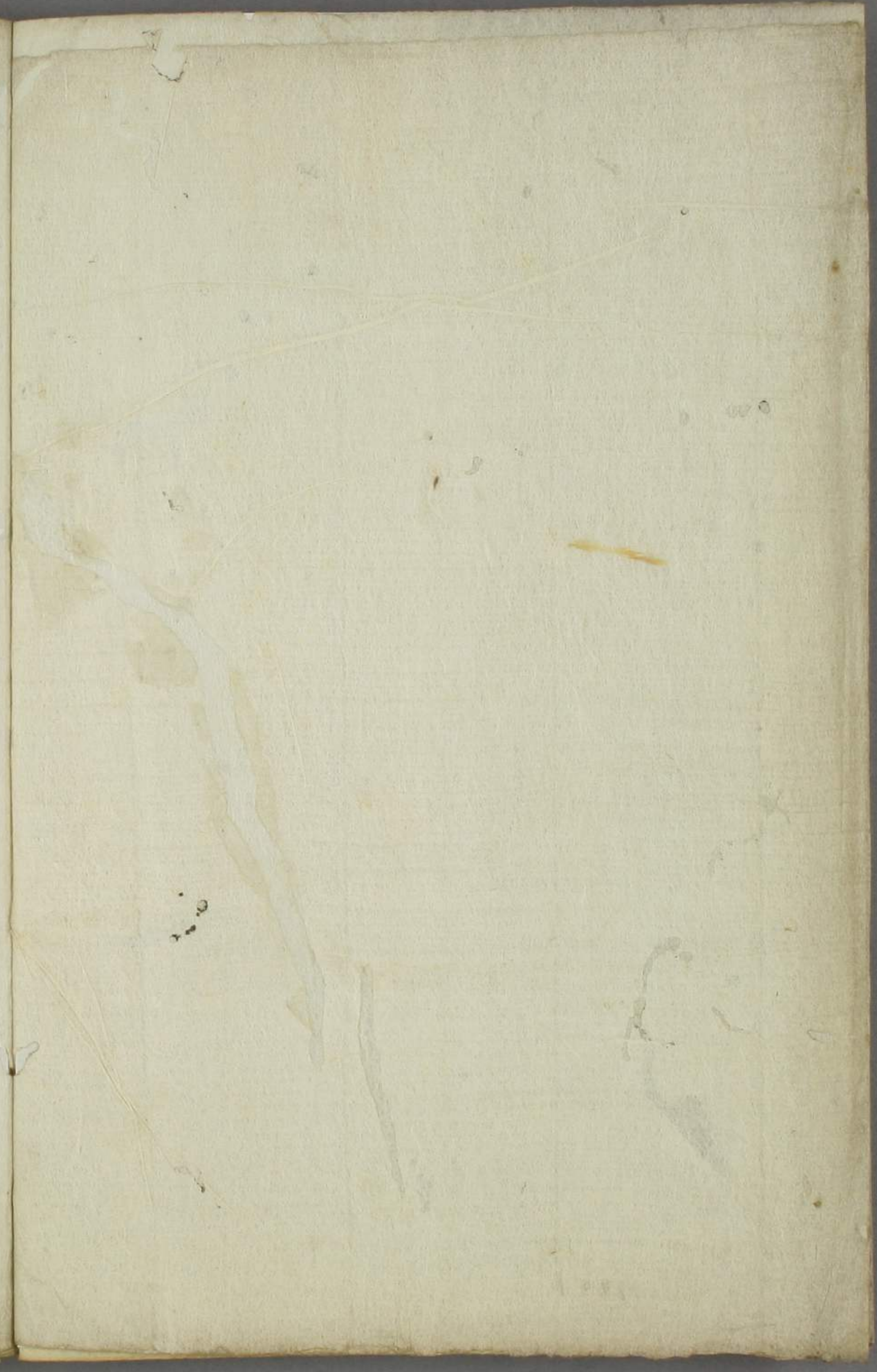
門八利4
號.788
卷

橋

明治四十年九月
朝倉龜三氏寄贈

Handwritten text in cursive script, likely Arabic or Persian, consisting of several lines of text.

Handwritten text in cursive script, likely Arabic or Persian, consisting of several lines of text.



Handwritten musical notation on the left page, consisting of a single staff with various notes and rests.

Handwritten musical notation on the right page, consisting of a single staff with various notes and rests.

Handwritten text in a cursive script, likely a personal letter or diary entry, occupying the top half of the page.

Handwritten text, possibly a signature or a specific name, centered on the page.

Handwritten text in a cursive script, continuing the message or entry from the top half of the page.

Handwritten text in a cursive script, occupying the top half of the page on the right-hand side.

Handwritten text, possibly a signature or a specific name, centered on the page.

Handwritten text in a cursive script, occupying the bottom half of the page on the right-hand side.

Handwritten musical notation on the top staff of the right page.

Handwritten musical notation on the second staff of the right page.

Handwritten musical notation on the third staff of the right page.

Handwritten musical notation on the fourth staff of the right page.

Handwritten musical notation on the fifth staff of the right page.

Handwritten musical notation on the sixth staff of the right page.

Handwritten musical notation on the seventh staff of the right page.

Handwritten musical notation on the eighth staff of the right page.

Handwritten musical notation on the top staff of the left page.

Handwritten musical notation on the second staff of the left page.

Handwritten musical notation on the third staff of the left page.

Handwritten musical notation on the fourth staff of the left page.

Handwritten musical notation on the fifth staff of the left page.

Handwritten musical notation on the sixth staff of the left page.

Handwritten musical notation on the seventh staff of the left page.

Handwritten musical notation on the eighth staff of the left page.

松陰附志

松陰附志
一

松陰附志

松陰附志

松陰附志

松陰附志

松陰附志

松陰附志

松陰附志

松陰附志

松陰附志

松陰附志

松陰附志

松陰附志

松陰附志

Handwritten text in cursive script, possibly a name or title, starting with a large initial letter.

Handwritten text in cursive script, appearing to be a name or a short phrase.

Handwritten text in cursive script, possibly a name or a short phrase.

Handwritten text in cursive script, possibly a name or a short phrase.

Handwritten text in cursive script, possibly a name or a short phrase.

Handwritten text in cursive script, possibly a name or a short phrase.

Handwritten text in cursive script, possibly a name or a short phrase.

Handwritten text in cursive script, possibly a name or a short phrase.

Handwritten text in cursive script, possibly a name or a short phrase.

Handwritten text in cursive script, possibly a name or a short phrase.

Handwritten text in cursive script, possibly a name or a short phrase.

Handwritten text in cursive script, possibly a name or a short phrase.

Handwritten text in cursive script, possibly a name or a short phrase.

Handwritten musical notation on the first staff of the left page.

瑞の離

Handwritten musical notation on the second staff of the left page.

瑞の離

Handwritten musical notation on the third staff of the left page.

瑞の離

Handwritten musical notation on the fourth staff of the left page.

瑞の離

Handwritten musical notation on the fifth staff of the left page.

瑞の離

Handwritten musical notation on the sixth staff of the left page.

Handwritten musical notation on the left page, consisting of several staves of notes and rests.

Handwritten musical notation on the right page, continuing the piece with several staves of notes and rests.

Handwritten musical notation on the left page, consisting of several staves with notes and clefs.

Handwritten musical notation on the right page, including a large clef and notes. The Japanese characters "草履" (Korin) are written vertically in the center.

Handwritten musical notation on the left page of the second spread, featuring a large clef and notes. The Japanese characters "草履" (Korin) are written vertically in the center.

Handwritten musical notation on the right page of the second spread, including a large clef and notes. The Japanese characters "草履" (Korin) are written vertically in the center.

Handwritten musical notation on a single staff, featuring a treble clef and a key signature of one flat.

Handwritten musical notation on a single staff, featuring a treble clef and a key signature of one flat.

Handwritten musical notation on a single staff, featuring a treble clef and a key signature of one flat.

Handwritten musical notation on a single staff, featuring a treble clef and a key signature of one flat.

Handwritten musical notation on a single staff, featuring a treble clef and a key signature of one flat.

Handwritten musical notation on a single staff, featuring a treble clef and a key signature of one flat.

Handwritten musical notation on a single staff, featuring a treble clef and a key signature of one flat.

Handwritten musical notation on a single staff, featuring a treble clef and a key signature of one flat.

Handwritten musical notation on a single staff, featuring a treble clef and a key signature of one flat.

Handwritten musical notation on a single staff, featuring a treble clef and a key signature of one flat.

Handwritten cursive script, first line on the left page.

Handwritten cursive script, second line on the left page.

Handwritten cursive script, third line on the left page.

Handwritten cursive script, first line on the right page.

Handwritten cursive script, second line on the right page.

Handwritten cursive script, third line on the right page.

b) *Handwritten cursive script, first line.*

Handwritten cursive script, second line.

Handwritten cursive script, third line.

Handwritten cursive script, fourth line.

Handwritten cursive script, fifth line.

Handwritten cursive script, sixth line.

Handwritten cursive script, seventh line.

Handwritten cursive script, eighth line.

Handwritten cursive script, ninth line.

Handwritten cursive script, tenth line.

Handwritten cursive script, eleventh line.

Handwritten cursive script, twelfth line.

Handwritten cursive script, thirteenth line.

Handwritten cursive script, fourteenth line.

Handwritten cursive script, fifteenth line.

Handwritten cursive script, sixteenth line.

か
あ
の
た
ら
な
い
と
い
ふ

あ
ら
ま
り
の
ま
ま
に
あ
ら
ま
り
の
ま
ま
に

あ
ら
ま
り
の
ま
ま
に
あ
ら
ま
り
の
ま
ま
に

あ
ら
ま
り
の
ま
ま
に
あ
ら
ま
り
の
ま
ま
に
あ
ら
ま
り
の
ま
ま
に

あ
ら
ま
り
の
ま
ま
に
あ
ら
ま
り
の
ま
ま
に
あ
ら
ま
り
の
ま
ま
に

あ
ら
ま
り
の
ま
ま
に
あ
ら
ま
り
の
ま
ま
に
あ
ら
ま
り
の
ま
ま
に

あ
ら
ま
り
の
ま
ま
に
あ
ら
ま
り
の
ま
ま
に
あ
ら
ま
り
の
ま
ま
に

Wiederholungsübungen

1. Die folgenden Wörter in der richtigen Reihenfolge schreiben.

Wörter

1. Die folgenden Wörter in der richtigen Reihenfolge schreiben.

Wörter

2. Die folgenden Wörter in der richtigen Reihenfolge schreiben.

3. Die folgenden Wörter in der richtigen Reihenfolge schreiben.

4. Die folgenden Wörter in der richtigen Reihenfolge schreiben.

Wörter

5. Die folgenden Wörter in der richtigen Reihenfolge schreiben.

6. Die folgenden Wörter in der richtigen Reihenfolge schreiben.

Wörter

7. Die folgenden Wörter in der richtigen Reihenfolge schreiben.

12

Handwritten cursive script, likely a name or title.

Handwritten characters, possibly a date or specific note.

Handwritten cursive script, continuing the text from the previous page.

Handwritten characters, possibly a date or specific note.

Handwritten characters, possibly a date or specific note.

Handwritten cursive script, continuing the text from the previous page.

Handwritten characters, possibly a date or specific note.

Handwritten cursive script, continuing the text from the previous page.

Handwritten characters, possibly a date or specific note.

Handwritten cursive script, likely a signature or name.

Handwritten cursive script, likely a signature or name.

Handwritten cursive script, likely a signature or name.

相人

Handwritten cursive script, likely a signature or name.

Handwritten cursive script, likely a signature or name.

相人

Handwritten cursive script, likely a signature or name.

相人

Handwritten cursive script, likely a signature or name.

Handwritten cursive script, likely a signature or name.

相人

Handwritten cursive script, likely a signature or name.

Handwritten cursive script, likely a signature or name.

Handwritten text in cursive script, possibly a list or account, with several lines of writing.

Handwritten word or phrase, possibly "Bismillah" or similar religious text.

Handwritten word or phrase, possibly "Bismillah" or similar religious text.

Handwritten text in cursive script, continuing the list or account from the previous page.

Handwritten word or phrase, possibly "Bismillah" or similar religious text.

Handwritten word or phrase, possibly "Bismillah" or similar religious text.

Kenjōfukuro

Kenjōfukuro Kenjōfukuro

Kenjōfukuro Kenjōfukuro

Kenjōfukuro

Kenjōfukuro Kenjōfukuro

Kenjōfukuro Kenjōfukuro

Kenjōfukuro

Kenjōfukuro Kenjōfukuro

Kenjōfukuro Kenjōfukuro

大和國流之郡標車之流道

社乃古車之舞之流系之流系

Kenjōfukuro Kenjōfukuro

Kenjōfukuro Kenjōfukuro

Kenjōfukuro Kenjōfukuro

Kenjōfukuro Kenjōfukuro

Kenjōfukuro Kenjōfukuro

Handwritten text in cursive script, likely a list or account. The text is written in a dark ink on aged paper. It begins with a small mark resembling a cross or a stylized 'x' on the left margin. The script is dense and fills most of the page.

Handwritten text in cursive script, continuing from the previous page. The text is written in a dark ink on aged paper. It begins with a small mark resembling a cross or a stylized 'x' on the left margin. The script is dense and fills most of the page.

Handwritten text at the top of the left page.

Handwritten text in the middle of the left page.

Handwritten text below the middle of the left page.

Handwritten text in the lower middle of the left page.

Handwritten text below the lower middle of the left page.

Handwritten text at the bottom of the left page.

Handwritten text at the top of the right page.

Handwritten text in the middle of the right page.

Handwritten text below the middle of the right page.

Handwritten text in the lower middle of the right page.

Handwritten text below the lower middle of the right page.

Handwritten text at the bottom of the right page.

Handwritten text at the bottom right of the right page.

Handwritten text in cursive script, likely a name or title.

Handwritten text in cursive script, possibly a date or a specific reference.

Handwritten text in cursive script, continuing the main entry.

Handwritten text in cursive script, possibly a name or title.

Handwritten text in cursive script, possibly a date or a specific reference.

Handwritten text in cursive script, continuing the main entry.

Handwritten text in cursive script, possibly a name or title.

Handwritten text in cursive script, possibly a date or a specific reference.

Handwritten text in cursive script, continuing the main entry.

Handwritten text in cursive script, possibly a name or title.

Handwritten text in cursive script, possibly a date or a specific reference.

Handwritten text in cursive script, continuing the main entry.

Handwritten text in cursive script, possibly a name or title.

Handwritten text in cursive script, possibly a date or a specific reference.

Handwritten text in cursive script, continuing the main entry.

Handwritten text in cursive script, possibly a name or title.

Handwritten musical notation on a single staff, consisting of a series of rhythmic notes and rests.

Handwritten musical notation on a single staff, continuing the piece with various note values and rests.

Handwritten musical notation on a single staff, showing a continuation of the musical composition.

Handwritten musical notation on a single staff, featuring a series of notes with stems.

Handwritten musical notation on a single staff, concluding the piece with a final note and a double bar line.

Handwritten text in a cursive script, possibly a signature or a short note.

Handwritten musical notation on a single staff, featuring a series of notes and rests.

Handwritten text in a cursive script, possibly a signature or a short note.

Handwritten musical notation on a single staff, showing a continuation of the musical composition.

Handwritten text in a cursive script, possibly a signature or a short note.

Handwritten musical notation on a single staff, concluding the piece with a final note and a double bar line.

the ... of the ...
to ...
See ...

the ... of ...
to ...

the ... of ...
to ...

Monday

the ... of ...
to ...

the ... of ...
to ...

Tuesday

the ... of ...
to ...

Handwritten text in cursive script, likely a list or account. The text is written in a dark ink on aged paper. It begins with a large initial 'H' and continues with several lines of text, including the word 'Dum' and 'Dum'.

Handwritten text in cursive script, continuing the list or account. It includes the word 'Dum' and 'Dum' and ends with a large flourish.

Handwritten text in cursive script, continuing the list or account. It includes the word 'Dum' and 'Dum' and ends with a large flourish.

Handwritten text in cursive script, likely a list or account. The text is written on the left page of an open notebook. It consists of several lines of text, including what appears to be a date "1790" and various entries that are difficult to decipher due to the cursive style.

Handwritten text in cursive script, continuing from the left page. It includes several lines of text, some of which appear to be names or titles, such as "John" and "Mary". The text is written on the right page of the notebook.

Small handwritten notes at the top of the right page.

山形 *Yamagata*

Yamagata

Yamagata

Yamagata

Yamagata

Yamagata

Yamagata

Yamagata

Yamagata

Yamagata

Yamagata

Yamagata

Yamagata

Yamagata

Yamagata

Yamagata

Yamagata

Handwritten text in cursive script, likely a list or account. The text is written in a fluid, connected style. It begins with a small number '22' at the top left. The entries appear to be names or descriptions, possibly related to a collection or inventory. The script is dense and fills most of the page.

天
高

Handwritten text in cursive script, continuing from the previous page. It features several lines of text, including a prominent vertical line that may separate columns or sections. The script is consistent with the previous page, showing a high level of fluency and connection between characters. The text is arranged in a structured manner, possibly representing a list or a series of entries.

いふことなきはなはたしきことなり

そなたの

いふことなきはなはたしきことなり

いふことなきはなはたしきことなり

いふこと

いふことなきはなはたしきことなり

いふことなきはなはたしきことなり

いふこと

いふことなきはなはたしきことなり

いふことなきはなはたしきことなり

いふこと

いふことなきはなはたしきことなり

いふことなきはなはたしきことなり

いふこと

いふことなきはなはたしきことなり

いふことなきはなはたしきことなり

Handwritten text in a cursive script, likely a personal letter or diary entry, spanning the left page of the notebook. The text is written in dark ink on aged, slightly yellowed paper.

Handwritten text in a cursive script, continuing from the left page or as a separate entry, spanning the right page of the notebook. The text is written in dark ink on aged, slightly yellowed paper.

Handwritten cursive script, first line on the left page.

Handwritten cursive script, second line on the left page.

Handwritten cursive script, third line on the left page.

Handwritten cursive script, first line on the right page.

Handwritten cursive script, second line on the right page.

Handwritten cursive script, third line on the right page.

Handwritten musical notation on the left page, consisting of several staves with notes and clefs.

Handwritten musical notation on the right page, continuing the piece with several staves of notes and clefs.

Handwritten text in cursive script on the left page, including the characters 木枝 (Kiwaji) and 木 (Ki).

Handwritten text in cursive script on the right page, including the characters 木 (Ki) and 木 (Ki).

Handwritten musical notation on the left page, consisting of several staves of notes and rests.

Handwritten title or section header in the center of the left page.

Handwritten musical notation on the right page, including a large initial note at the top and several staves of notes.

Handwritten cursive text on the top left page, consisting of several lines of script.

Handwritten cursive text on the top right page, consisting of several lines of script.

Handwritten cursive text on the bottom left page, consisting of several lines of script.

Handwritten cursive text on the bottom right page, consisting of several lines of script.

Handwritten text in a cursive script, likely a religious or historical document. The text is written in a dark ink on aged, yellowed paper. It begins with a large initial letter, possibly 'A' or 'B', followed by several lines of text. The script is highly decorative and characteristic of the 17th or 18th century.

Handwritten text in a cursive script, continuing from the previous page. The text is written in a dark ink on aged, yellowed paper. It begins with a large initial letter, possibly 'A' or 'B', followed by several lines of text. The script is highly decorative and characteristic of the 17th or 18th century.

Handwritten text in a cursive script, continuing from the previous page. The text is written in a dark ink on aged, yellowed paper. It begins with a large initial letter, possibly 'A' or 'B', followed by several lines of text. The script is highly decorative and characteristic of the 17th or 18th century.

Handwritten musical notation on the left page, consisting of several staves of notes and rests.

Handwritten musical notation on the right page, continuing from the left page.

Handwritten musical notation on the left page of the second spread, including a double bar line.

Handwritten musical notation on the right page of the second spread, including a double bar line.

Handwritten text in Arabic script, top line of the left page.

Handwritten text in Arabic script, second line of the left page.

Handwritten text in Arabic script, third line of the left page.

Handwritten text in Arabic script, fourth line of the left page.

Handwritten text in Arabic script, fifth line of the left page.

Handwritten text in Arabic script, sixth line of the left page.

Handwritten text in Arabic script, seventh line of the left page.

Handwritten text in Arabic script, eighth line of the left page.

Handwritten text in Arabic script, ninth line of the left page.

Handwritten text in Arabic script, top line of the right page.

Handwritten text in Arabic script, second line of the right page.

Handwritten text in Arabic script, third line of the right page.

Handwritten text in Arabic script, fourth line of the right page.

Handwritten text in Arabic script, fifth line of the right page.

1871年 正月 廿一日 晴

今日无事 闲坐 偶思 往事 感怀 久之 遂成 数语

人生如梦 转眼即逝 回首 往事 历历 在目 感慨 良多

世事无常 变幻莫测 唯愿 此生 平安 快乐 足矣

岁月如流 逝水无痕 回首 往事 历历 在目 感慨 良多

人生如梦 转眼即逝 回首 往事 历历 在目 感慨 良多

世事无常 变幻莫测 唯愿 此生 平安 快乐 足矣

岁月如流 逝水无痕 回首 往事 历历 在目 感慨 良多

人生如梦 转眼即逝 回首 往事 历历 在目 感慨 良多

世事无常 变幻莫测 唯愿 此生 平安 快乐 足矣

岁月如流 逝水无痕 回首 往事 历历 在目 感慨 良多

明月 照 松 间

松间明月照 松间明月照 松间明月照

松间明月照 松间明月照 松间明月照

مستحق
الذين
مستحق
الذين

مستحق
الذين
مستحق
الذين

مستحق
الذين
مستحق
الذين

مستحق
الذين
مستحق
الذين

مستحق
الذين
مستحق
الذين

مستحق
الذين
مستحق
الذين

مستحق
الذين
مستحق
الذين

مستحق
الذين
مستحق
الذين

مستحق
الذين
مستحق
الذين

مستحق
الذين
مستحق
الذين

Handwritten text in cursive script, likely a list or account, starting with a large initial letter.

Handwritten text in cursive script, continuing the list or account.

Handwritten text in cursive script, including a large initial letter.

Handwritten text in cursive script, continuing the list or account.

Handwritten text in cursive script, including a large initial letter.

Handwritten text in cursive script, continuing the list or account.

Handwritten text in cursive script, including a large initial letter.

Handwritten text in cursive script, continuing the list or account.

Handwritten text in cursive script, including a large initial letter.

Handwritten text in a cursive script, likely a letter or a page from a manuscript. The text is written in a fluid, connected style across several lines.

Handwritten text in a cursive script, continuing from the previous page. The text is written in a fluid, connected style across several lines.

Handwritten text in cursive script, likely a name or title, possibly starting with 'The'.

Handwritten text in cursive script, possibly a name or title.

Handwritten text in cursive script, possibly a name or title.

Handwritten text in cursive script, possibly a name or title.

Handwritten text in cursive script, possibly a name or title.

Handwritten text in cursive script, possibly a name or title.

Handwritten text in cursive script, possibly a name or title.

Handwritten text in cursive script, possibly a name or title.

Handwritten text in cursive script, possibly a name or title.

Handwritten text in cursive script, possibly a name or title.

Handwritten text in cursive script, possibly a name or title.

Handwritten cursive text, likely a signature or name, possibly starting with 'George'.

Handwritten notes in Chinese characters, including '二月' (February) and '二日' (2nd day).

Handwritten cursive text, possibly a signature or name, possibly starting with 'George'.

Handwritten cursive text, possibly a signature or name, possibly starting with 'George'.

Handwritten cursive text, possibly a signature or name, possibly starting with 'George'.

Handwritten cursive text, possibly a signature or name, possibly starting with 'George'.

Handwritten cursive text, possibly a signature or name, possibly starting with 'George'.

Handwritten cursive text, possibly a signature or name, possibly starting with 'George'.

Handwritten text in cursive script, possibly a list or account.

Handwritten characters, possibly a date or specific entry.

Handwritten text in cursive script, continuing the list or account.

Handwritten text in cursive script, possibly a signature or a specific entry.

Handwritten text in cursive script, possibly a signature or a specific entry.

Handwritten musical notation on the left side of the first page.

自及意

Handwritten musical notation on the right side of the first page.

Handwritten musical notation on the left side of the second page.

Handwritten musical notation on the right side of the second page.

Handwritten musical notation on the left side of the third page.

Handwritten musical notation on the right side of the third page.

Handwritten musical notation on the left side of the fourth page.

Handwritten musical notation on the right side of the fourth page.

Handwritten musical notation on the left side of the fifth page.

Handwritten musical notation on the right side of the fifth page.

Handwritten musical notation on the left side of the sixth page.

Handwritten musical notation on the right side of the sixth page.

Handwritten musical notation on the left side of the seventh page.

Handwritten musical notation on the right side of the seventh page.

あつたよきことばに
あつたよきことばに
あつたよきことばに

あつたよきことばに
あつたよきことばに
あつたよきことばに

あつたよきことばに
あつたよきことばに
あつたよきことばに

あつたよきことばに
あつたよきことばに
あつたよきことばに

あつたよきことばに

あつたよきことばに
あつたよきことばに
あつたよきことばに

あつたよきことばに
あつたよきことばに
あつたよきことばに

あつたよきことばに

あつたよきことばに
あつたよきことばに
あつたよきことばに

Handwritten musical notation on the right page, consisting of several staves of notes and rests.

Handwritten text or signature, possibly a name, located between the staves on the right page.

Handwritten musical notation on the right page, continuing the piece with various note values and rests.

Handwritten musical notation on the right page, showing a continuation of the musical score.

Handwritten musical notation on the right page, including a double bar line and subsequent notes.

Handwritten musical notation on the left page, starting with a treble clef and a key signature.

Handwritten musical notation on the left page, featuring a series of notes and rests.

Handwritten musical notation on the left page, showing a continuation of the musical score.

Handwritten musical notation on the left page, including a double bar line and subsequent notes.

Handwritten musical notation on the left page, featuring a series of notes and rests.

Handwritten musical notation on the left page, including a double bar line and subsequent notes.

Handwritten text in cursive script, likely a list or account. The text is written on the left page of an open notebook. It consists of several lines of text, with some words appearing to be "Handwritten", "List", and "Account".

Handwritten text in cursive script, likely a list or account. The text is written on the right page of an open notebook. It consists of several lines of text, with some words appearing to be "Handwritten", "List", and "Account".

Handwritten musical notation on the left page, consisting of several staves of notes and rests.

木
角
三

Handwritten musical notation on the right page, continuing from the left page, with a section header '木角三'.

おはようございます

おはようございます

おはようございます

おはようございます

おはようございます

おはようございます

おはようございます

おはようございます

おはようございます

おはようございます

おはようございます

For news of S. M. D. with
the good of the
the good of the
the good of the
the good of the

