

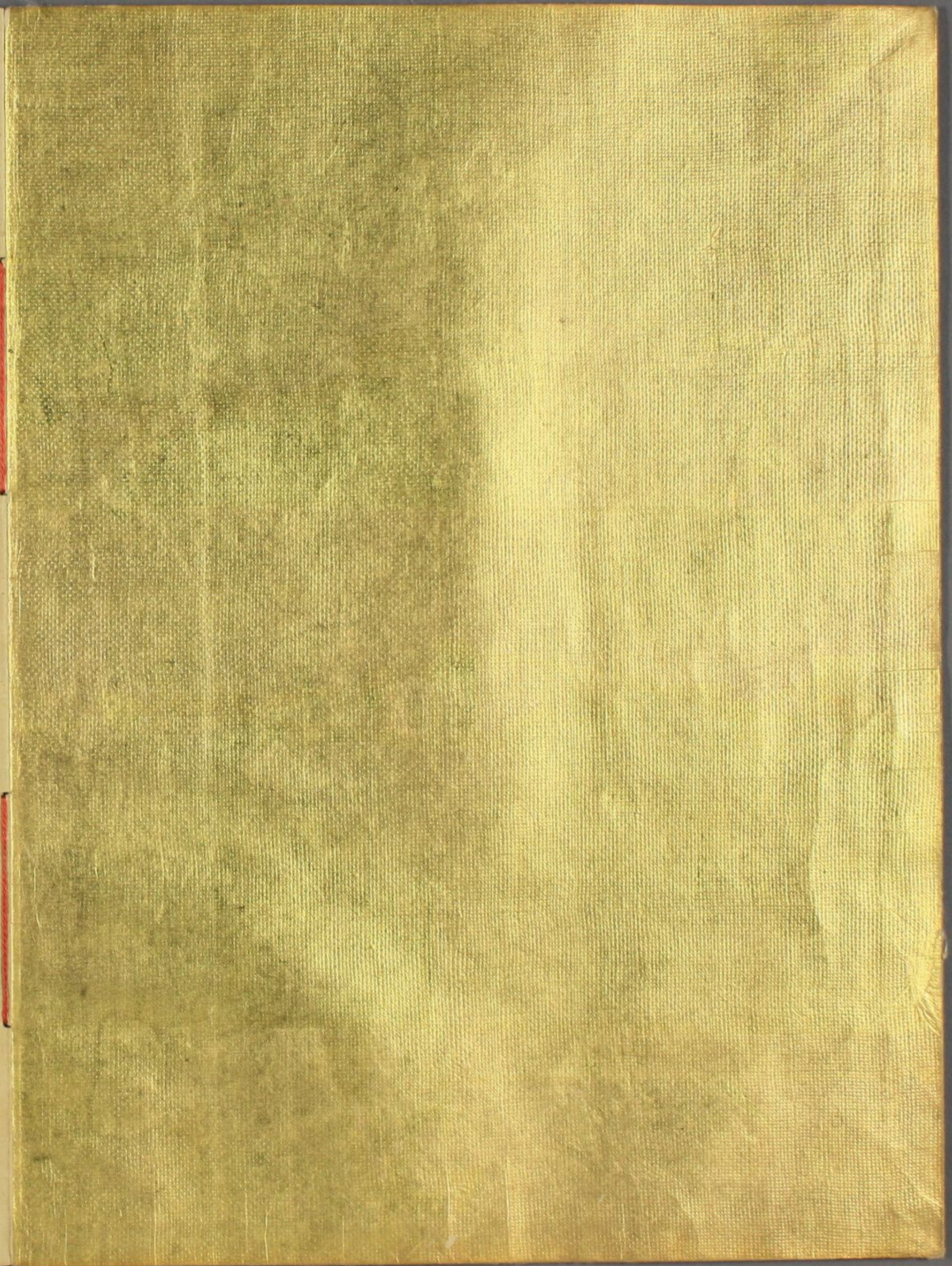


んり集

特別
~ 2
4867
51 (40)



Handwritten text in a cursive script, likely a letter or document, written on aged paper. The text is arranged in approximately 12 lines, flowing from right to left. The ink is dark, and the paper shows signs of age and wear.



Handwritten text in a cursive script, likely a letter or a page from a manuscript. The text is written in a fluid, connected style across approximately 12 lines.

Handwritten text in a cursive script, likely a letter or a page from a manuscript. The text is written in a fluid, connected style across approximately 12 lines.

Handwritten text in cursive script, likely a letter or document, covering the right page of the manuscript.

Handwritten text in cursive script, likely a letter or document, covering the left page of the manuscript.

Handwritten text in a cursive script, likely a historical document or letter. The text is written in a dark ink on aged paper. It consists of approximately 12 lines of text, starting with a large initial letter 'D'. The script is highly stylized and characteristic of the 17th or 18th century.

Handwritten text in a cursive script, likely a historical document or letter. The text is written in a dark ink on aged paper. It consists of approximately 12 lines of text, starting with a large initial letter 'D'. The script is highly stylized and characteristic of the 17th or 18th century.

Handwritten text in a cursive script, likely a historical document or letter. The text is written in dark ink on aged, yellowish paper. The script is highly stylized and difficult to decipher without a key. The text is arranged in approximately 12 lines, starting from the top right and moving downwards. The first line begins with a large, ornate initial letter, possibly 'H'. The text ends with a large, decorative flourish at the bottom right.

Handwritten text in a cursive script, likely a letter or a page from a manuscript. The text is written in a fluid, connected style across approximately 12 lines. The ink is dark, and the paper shows signs of age and wear.

Handwritten text in cursive script, likely a letter or document, written on the right page of an open manuscript. The text is dense and fills most of the page.

Handwritten text in cursive script, likely a letter or document, written on the left page of an open manuscript. The text is dense and fills most of the page.

Handwritten text in a cursive script, likely a letter or a page from a manuscript. The text is written in a fluid, connected style across approximately 12 lines. The ink is dark and the paper shows signs of age.

Handwritten text in a cursive script, likely a letter or a page from a manuscript. The text is written in a fluid, connected style across approximately 12 lines. The ink is dark and the paper shows signs of age.

Handwritten text in a cursive script, likely a historical document or manuscript. The text is written in dark ink on aged, yellowish paper. It consists of approximately 12 lines of text, starting with a large initial letter 'S'.

Handwritten text in a cursive script, likely a historical document or manuscript. The text is written in dark ink on aged, yellowish paper. It consists of approximately 12 lines of text, starting with a large initial letter 'S'.

Handwritten text in Arabic script, consisting of approximately 14 lines of cursive script.

Handwritten text in Arabic script, consisting of approximately 14 lines of cursive script.

Handwritten text in a cursive script, likely a historical document or letter, spanning the right page of the manuscript.

Handwritten text in a cursive script, likely a historical document or letter, spanning the left page of the manuscript.

Handwritten text in a cursive script, likely a letter or a page from a manuscript. The text is written in a fluid, connected style across approximately 12 lines.

Handwritten text in a cursive script, likely a letter or a page from a manuscript. The text is written in a fluid, connected style across approximately 12 lines.

Handwritten text in a cursive script, likely a letter or document, written on the left page of an open manuscript. The text is arranged in approximately 12 horizontal lines, flowing from right to left across the page. The ink is dark and the script is highly stylized and interconnected.

Handwritten text in a cursive script, likely a letter or document, written on the right page of an open manuscript. The text is arranged in approximately 12 horizontal lines, flowing from right to left across the page. The ink is dark and the script is highly stylized and interconnected, matching the style on the left page.

Handwritten text in a cursive script, likely a letter or document, written on the left page of an open manuscript. The text is dense and fills most of the page.

Handwritten text in a cursive script, likely a letter or document, written on the right page of an open manuscript. The text is dense and fills most of the page.

Handwritten text in a cursive script, likely a letter or document, written on the right page of an open book. The text is dense and fills most of the page.

Handwritten text in a cursive script, likely a letter or document, written on the left page of an open book. The text is dense and fills most of the page.

Handwritten text in cursive script, likely a letter or document, written on the left page of the manuscript. The text is dense and fills most of the page.

Handwritten text in cursive script, likely a letter or document, written on the right page of the manuscript. The text is dense and fills most of the page.

— 12 —
— 13 —
— 14 —
— 15 —
— 16 —
— 17 —
— 18 —
— 19 —
— 20 —
— 21 —
— 22 —
— 23 —
— 24 —
— 25 —
— 26 —
— 27 —
— 28 —
— 29 —
— 30 —
— 31 —
— 32 —
— 33 —
— 34 —
— 35 —
— 36 —
— 37 —
— 38 —
— 39 —
— 40 —
— 41 —
— 42 —
— 43 —
— 44 —
— 45 —
— 46 —
— 47 —
— 48 —
— 49 —
— 50 —
— 51 —
— 52 —
— 53 —
— 54 —
— 55 —
— 56 —
— 57 —
— 58 —
— 59 —
— 60 —
— 61 —
— 62 —
— 63 —
— 64 —
— 65 —
— 66 —
— 67 —
— 68 —
— 69 —
— 70 —
— 71 —
— 72 —
— 73 —
— 74 —
— 75 —
— 76 —
— 77 —
— 78 —
— 79 —
— 80 —
— 81 —
— 82 —
— 83 —
— 84 —
— 85 —
— 86 —
— 87 —
— 88 —
— 89 —
— 90 —
— 91 —
— 92 —
— 93 —
— 94 —
— 95 —
— 96 —
— 97 —
— 98 —
— 99 —
— 100 —

— 101 —
— 102 —
— 103 —
— 104 —
— 105 —
— 106 —
— 107 —
— 108 —
— 109 —
— 110 —
— 111 —
— 112 —
— 113 —
— 114 —
— 115 —
— 116 —
— 117 —
— 118 —
— 119 —
— 120 —
— 121 —
— 122 —
— 123 —
— 124 —
— 125 —
— 126 —
— 127 —
— 128 —
— 129 —
— 130 —
— 131 —
— 132 —
— 133 —
— 134 —
— 135 —
— 136 —
— 137 —
— 138 —
— 139 —
— 140 —
— 141 —
— 142 —
— 143 —
— 144 —
— 145 —
— 146 —
— 147 —
— 148 —
— 149 —
— 150 —
— 151 —
— 152 —
— 153 —
— 154 —
— 155 —
— 156 —
— 157 —
— 158 —
— 159 —
— 160 —
— 161 —
— 162 —
— 163 —
— 164 —
— 165 —
— 166 —
— 167 —
— 168 —
— 169 —
— 170 —
— 171 —
— 172 —
— 173 —
— 174 —
— 175 —
— 176 —
— 177 —
— 178 —
— 179 —
— 180 —
— 181 —
— 182 —
— 183 —
— 184 —
— 185 —
— 186 —
— 187 —
— 188 —
— 189 —
— 190 —
— 191 —
— 192 —
— 193 —
— 194 —
— 195 —
— 196 —
— 197 —
— 198 —
— 199 —
— 200 —

Handwritten text in a cursive script, likely a letter or a page from a manuscript. The text is written in a fluid, connected style across approximately 12 lines.

Handwritten text in a cursive script, continuing from the previous page. The text is written in a fluid, connected style across approximately 12 lines.

Handwritten text in cursive script, top line of the right page.

Handwritten text in cursive script, middle section of the right page.

Handwritten text in cursive script, bottom section of the right page.

Handwritten text in cursive script, covering the entire left page.

Handwritten text in cursive script, likely a letter or document, written on the left page of an open manuscript. The text is dense and fills most of the page.

Handwritten text in cursive script, likely a letter or document, written on the right page of an open manuscript. The text is dense and fills most of the page.

Handwritten text in cursive script, likely a letter or document, written on the right page of an open book. The text is written in a fluid, connected style, characteristic of 18th-century cursive. It consists of approximately 12 lines of text, starting with a small flourish at the top left of the page.

Handwritten text in cursive script, likely a letter or document, written on the left page of an open book. The text is written in a fluid, connected style, characteristic of 18th-century cursive. It consists of approximately 12 lines of text, starting with a small flourish at the top left of the page.

in the morning
at the first
of the day
the first
of the day
the first
of the day

the first
of the day

the first
of the day

