

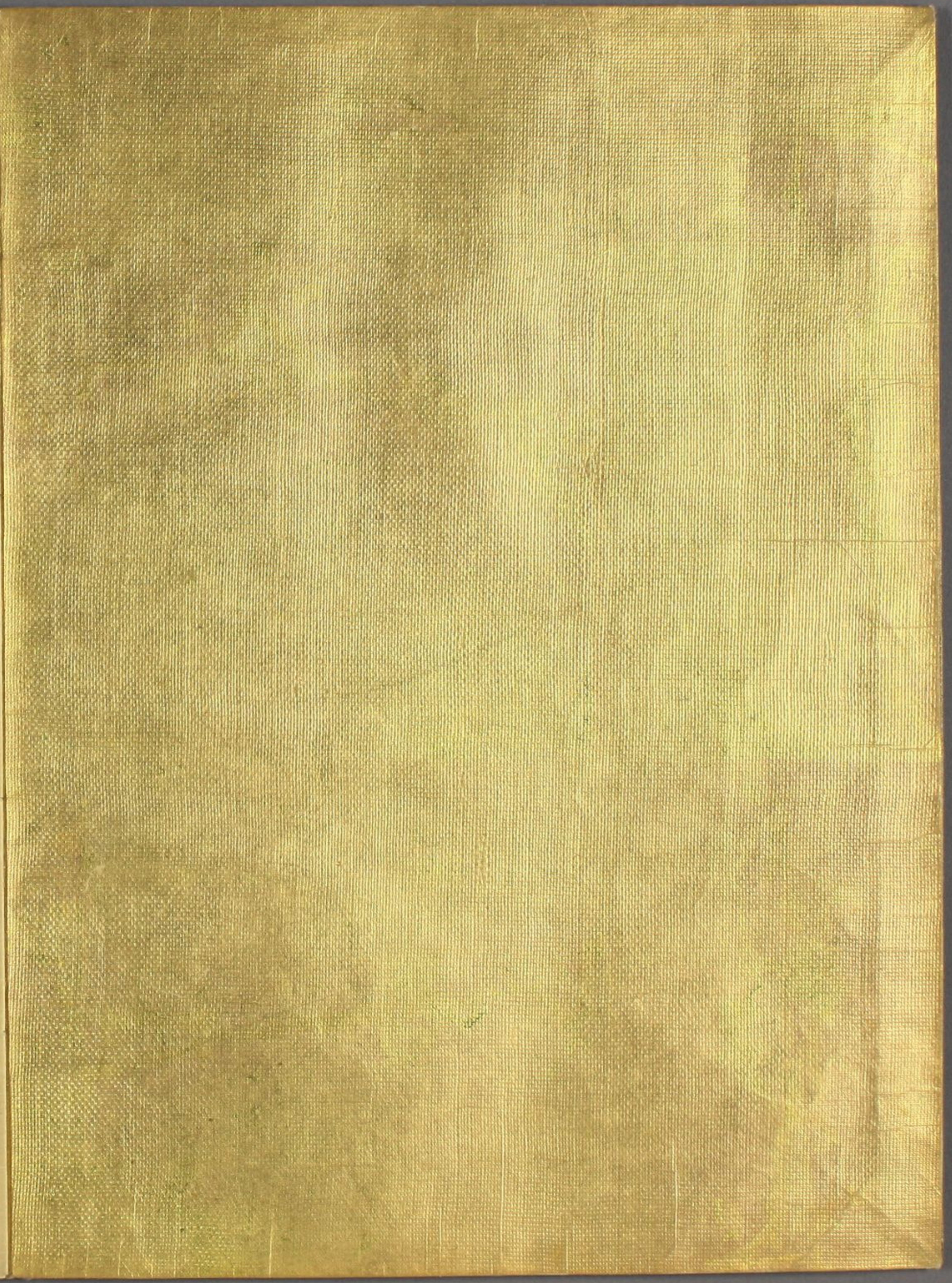


藤乃之集

特別
~ 2
4867
51 (33)



Handwritten Japanese text in cursive style (sōsho), likely a letter or a page from a diary. The text is written vertically in approximately 15 columns, starting from the right side of the page and moving towards the left. The characters are finely inscribed and somewhat faded, typical of traditional Japanese calligraphy on aged paper.



Handwritten text in a cursive script, likely a letter or a page from a manuscript. The text is written in dark ink on aged, yellowish paper. It consists of approximately 12 lines of text, starting with a large initial letter 'E' on the first line. The script is highly stylized and difficult to decipher without a key.

Handwritten text in a cursive script, continuing from the previous page. It consists of approximately 12 lines of text, starting with a large initial letter 'E' on the first line. The script is highly stylized and difficult to decipher without a key.

Handwritten text in a cursive script, likely a letter or document, spanning the right page of the manuscript. The text is written in a fluid, connected style with various flourishes and ligatures. It appears to be a single continuous paragraph.

Handwritten text in a cursive script, likely a letter or document, spanning the left page of the manuscript. The text is written in a fluid, connected style with various flourishes and ligatures. It appears to be a single continuous paragraph.

Handwritten text in cursive script, likely a list or account. The text is written in black ink on aged paper. It begins with a red flourish at the top left. The script is dense and difficult to decipher, but appears to be organized into several lines. The text is written in a cursive style characteristic of the 17th or 18th century.

Handwritten text in cursive script, continuing from the previous page. The text is written in black ink on aged paper. It begins with a red flourish at the top left. The script is dense and difficult to decipher, but appears to be organized into several lines. The text is written in a cursive style characteristic of the 17th or 18th century.

Handwritten text in a cursive script, likely a historical document or letter, written on the left page of an open manuscript. The text is arranged in approximately 12 horizontal lines, starting from the top left and moving towards the bottom right. The ink is dark, and the script is highly stylized and fluid.

Handwritten text in a cursive script, likely a historical document or letter, written on the right page of an open manuscript. The text is arranged in approximately 12 horizontal lines, starting from the top left and moving towards the bottom right. The ink is dark, and the script is highly stylized and fluid.

Handwritten text in cursive script, likely a letter or document, written on the right page of an open manuscript. The text is dense and fills most of the page.

Handwritten text in cursive script, likely a letter or document, written on the left page of an open manuscript. The text is dense and fills most of the page.

Handwritten text in Arabic script, consisting of approximately 12 lines of dense, cursive writing.

Handwritten text in Arabic script, consisting of approximately 12 lines of dense, cursive writing.

あはれなる御心にて
なほ御心にて
御心にて
御心にて

御心にて
御心にて
御心にて
御心にて
御心にて

御心にて

御心にて
御心にて

御心にて
御心にて
御心にて
御心にて
御心にて
御心にて
御心にて
御心にて
御心にて
御心にて

Handwritten text in a cursive script, likely a letter or document, written on the right page of the manuscript. The text is arranged in approximately 12 horizontal lines, starting from the top right and moving towards the bottom left. The ink is dark and the handwriting is fluid and connected.

Handwritten text in a cursive script, likely a letter or document, written on the left page of the manuscript. The text is arranged in approximately 12 horizontal lines, starting from the top left and moving towards the bottom right. The ink is dark and the handwriting is fluid and connected.

Handwritten text in a cursive script, likely a historical document or letter. The text is written in a dark ink on aged, yellowish paper. It consists of approximately 12 lines of text, starting with a large initial letter 'S' and ending with a period. The script is highly stylized and characteristic of the 17th or 18th century.

Handwritten text in a cursive script, likely a historical document or letter. The text is written in a dark ink on aged, yellowish paper. It consists of approximately 12 lines of text, starting with a large initial letter 'S' and ending with a period. The script is highly stylized and characteristic of the 17th or 18th century.

Handwritten text in a cursive script, likely a letter or document, written on the right page of the manuscript. The text is arranged in approximately 12 horizontal lines, starting from the top right and moving towards the bottom left. The ink is dark and the handwriting is fluid and connected.

Handwritten text in a cursive script, likely a letter or document, written on the left page of the manuscript. The text is arranged in approximately 12 horizontal lines, starting from the top left and moving towards the bottom right. The ink is dark and the handwriting is fluid and connected.

Handwritten text in a cursive script, likely a letter or a page from a manuscript. The text is written in a fluid, connected style across approximately 12 lines.

Handwritten text in a cursive script, likely a letter or a page from a manuscript. The text is written in a fluid, connected style across approximately 12 lines.

Handwritten text in a cursive script, likely a historical document or manuscript, covering the left page.

Handwritten text in a cursive script, likely a historical document or manuscript, covering the right page.

Handwritten text in cursive script, likely a letter or document, written on the right page of the manuscript. The text is dense and fills most of the page.

Handwritten text in cursive script, likely a letter or document, written on the left page of the manuscript. The text is dense and fills most of the page.

Handwritten text in a cursive script, likely a letter or document, spanning the left page of the manuscript. The text is written in a fluid, connected style with various flourishes and loops.

Handwritten text in a cursive script, likely a letter or document, spanning the right page of the manuscript. The text continues from the left page, maintaining the same fluid, connected style.

Handwritten text at the bottom of the right page, possibly a signature or a closing phrase.

Handwritten text in a cursive script, likely a historical document or letter. The text is written in a dark ink on aged, yellowish paper. It consists of approximately 12 lines of text, starting with a large initial letter 'H' and ending with a period. The script is highly stylized and difficult to decipher without a key.

Handwritten text in a cursive script, continuing from the previous page. It consists of approximately 12 lines of text, starting with a large initial letter 'H' and ending with a period. The script is highly stylized and difficult to decipher without a key.

Handwritten text in a cursive script, likely a historical document or letter. The text is written in a dark ink on aged, yellowish paper. It consists of approximately 15 lines of text, starting with a large initial letter 'S' and ending with a period. The script is highly stylized and characteristic of the early modern period.

Handwritten text in a cursive script, likely a historical document or letter. The text is written in a dark ink on aged, yellowish paper. It consists of approximately 15 lines of text, starting with a large initial letter 'S' and ending with a period. The script is highly stylized and characteristic of the early modern period.

Handwritten text in a cursive script, likely a historical document or letter, spanning the left page of the manuscript.

Handwritten text in a cursive script, likely a historical document or letter, spanning the right page of the manuscript.

Handwritten text in a cursive script, likely a letter or a page from a manuscript. The text is written in a fluid, connected style across approximately 12 lines.

Handwritten text in a cursive script, continuing from the previous page. The text is written in a fluid, connected style across approximately 12 lines.

Handwritten text in a cursive script, likely a letter or document, written on the left page of an open manuscript. The text is dense and fills most of the page.

Handwritten text in a cursive script, likely a letter or document, written on the right page of an open manuscript. The text is dense and fills most of the page.

Handwritten text in a cursive script, likely a letter or a page from a manuscript. The text is written in black ink on aged paper. The script is highly stylized and difficult to decipher without a key. It appears to be a single paragraph of text.



Handwritten text in a cursive script, continuing from the top page. The text is written in black ink on aged paper. The script is highly stylized and difficult to decipher without a key. It appears to be a single paragraph of text.

Handwritten text in cursive script, likely a letter or document, spanning the right page.

Handwritten text in cursive script, likely a signature or name, located at the bottom of the right page.

Handwritten text in cursive script, likely a signature or name, located at the top of the left page.

Handwritten text in cursive script, likely a letter or document, spanning the left page.

此方是...
 此方是...
 此方是...
 此方是...
 此方是...
 此方是...

