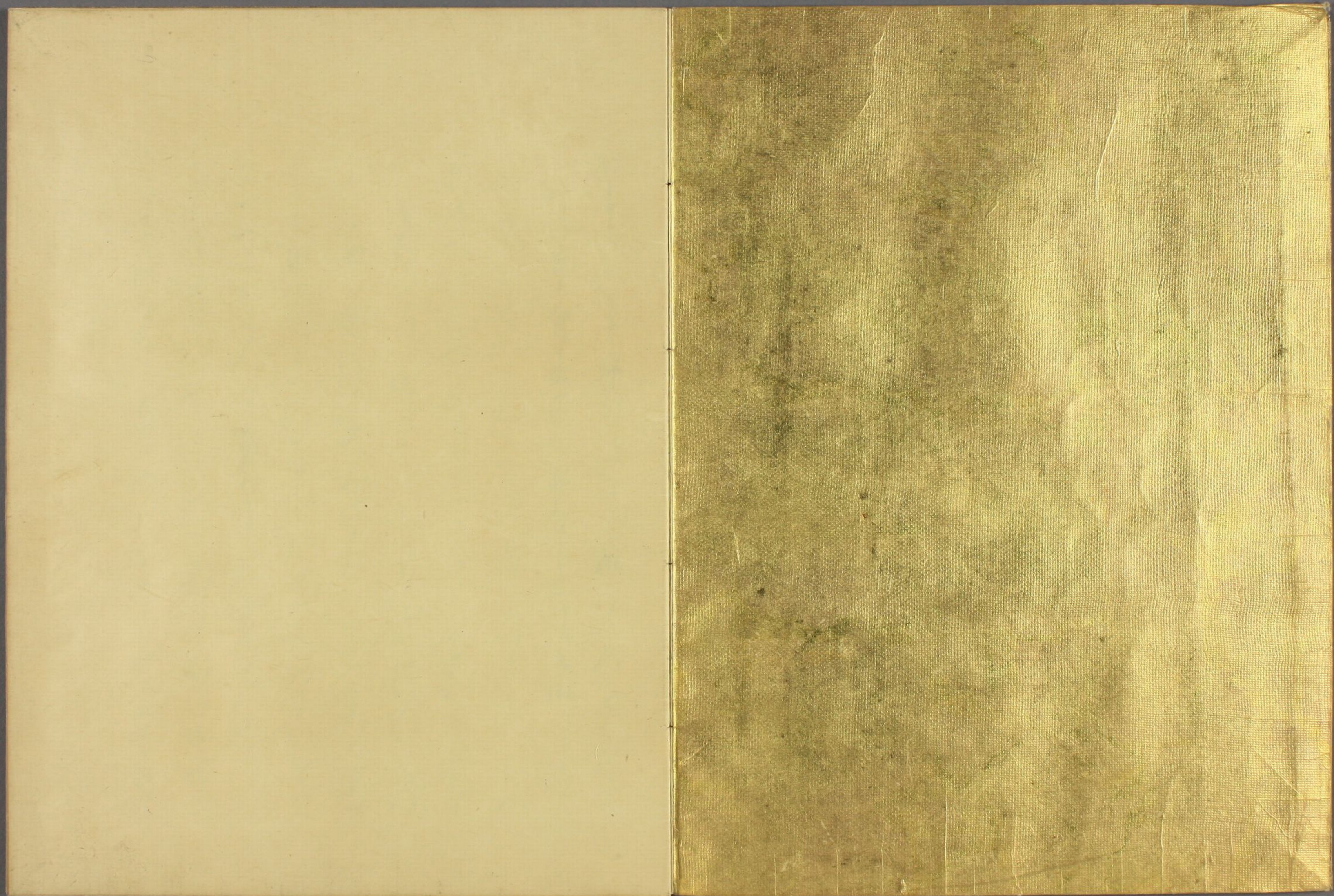




梅
の
え

特別
~ 2
4867
51(32)





Handwritten text in a cursive script, likely a letter or a page from a manuscript. The text is written in dark ink on aged, yellowish paper. It consists of approximately 15 lines of text, starting with a large initial letter 'M' and ending with a flourish. The script is highly stylized and characteristic of the 17th or 18th century.

Handwritten text in a cursive script, continuing from the previous page. It consists of approximately 15 lines of text, starting with a large initial letter 'M' and ending with a flourish. The script is highly stylized and characteristic of the 17th or 18th century.

Handwritten text in a cursive script, likely a letter or document, written on the right page of an open book. The text is dense and fills most of the page.

Handwritten text in a cursive script, likely a letter or document, written on the left page of an open book. The text is dense and fills most of the page.

Handwritten text in cursive script, consisting of approximately 12 lines of text.

Handwritten text in cursive script, consisting of approximately 12 lines of text.

Handwritten text in a cursive script, likely a letter or a page from a manuscript. The text is written in a fluid, connected style across approximately 12 lines.

Handwritten text in a cursive script, continuing from the previous page. The text is written in a fluid, connected style across approximately 12 lines.

Handwritten text in a cursive script, likely a historical document or letter. The text is written in a dark ink on aged paper. The script is highly stylized and difficult to decipher without a key. It appears to be a single paragraph of text.

Handwritten text in a cursive script, likely a historical document or letter. The text is written in a dark ink on aged paper. The script is highly stylized and difficult to decipher without a key. It appears to be a single paragraph of text.

Handwritten text in a cursive script, likely a historical document or letter. The text is written in a dark ink on aged, yellowish paper. It consists of approximately 15 lines of text, starting with a large initial letter 'D' and ending with a smaller signature or mark.

Handwritten text in a cursive script, likely a historical document or letter. The text is written in a dark ink on aged, yellowish paper. It consists of approximately 15 lines of text, starting with a large initial letter 'D' and ending with a smaller signature or mark.

Handwritten text in a cursive script, likely a historical document or manuscript. The text is written in a dark ink on aged, yellowish paper. It consists of approximately 12 lines of text, starting with a large initial letter 'S' and ending with a large final letter 'R'. The script is highly stylized and difficult to decipher without a key.

Handwritten text in a cursive script, continuing from the previous page. It consists of approximately 12 lines of text, starting with a large initial letter 'S' and ending with a large final letter 'R'. The script is highly stylized and difficult to decipher without a key.

Handwritten text in a cursive script, likely a letter or a page from a manuscript. The text is written in dark ink on aged, yellowish paper. It consists of approximately 12 lines of text, starting with a long horizontal flourish at the top. The script is highly decorative and difficult to decipher without a key.

Handwritten text in a cursive script, continuing from the previous page. It consists of approximately 12 lines of text, starting with a long horizontal flourish at the top. The script is highly decorative and difficult to decipher without a key.

Handwritten text in cursive script, consisting of approximately 12 lines of text.

Handwritten text in cursive script, consisting of approximately 12 lines of text.

Handwritten text in cursive script, likely a letter or document, written on the right page of the manuscript. The text is dense and fills most of the page.

Handwritten text in cursive script, likely a letter or document, written on the left page of the manuscript. The text is dense and fills most of the page.

Handwritten text in a cursive script, likely a letter or a page from a manuscript. The text is written in black ink on aged paper. The script is highly stylized and difficult to decipher. The text is arranged in approximately 12 horizontal lines across the page.



Handwritten text in a cursive script, likely a letter or a page from a manuscript. The text is written in black ink on aged paper. The script is highly stylized and difficult to decipher. The text is arranged in approximately 12 horizontal lines across the page.

Handwritten text in a cursive script, likely a letter or a page from a manuscript. The text is written in dark ink on aged, yellowish paper. It consists of approximately 15 lines of text, starting with a capital letter 'H' and ending with a period. The script is highly stylized and characteristic of the 17th or 18th century.

Handwritten text in a cursive script, likely a letter or a page from a manuscript. The text is written in dark ink on aged, yellowish paper. It consists of approximately 15 lines of text, starting with a capital letter 'H' and ending with a period. The script is highly stylized and characteristic of the 17th or 18th century.

Handwritten musical notation on the left page, consisting of a single staff with notes and rests.

Handwritten musical notation on the right page, consisting of a single staff with notes and rests.

Handwritten text in a cursive script, likely a historical document or letter. The text is written in dark ink on aged, yellowish paper. It consists of approximately 12 lines of text, starting with a large initial letter 'S'.

Handwritten text in a cursive script, continuing from the previous page. The text is written in dark ink on aged, yellowish paper. It consists of approximately 12 lines of text, starting with a large initial letter 'S'.

Handwritten text in cursive script, likely a list or account, written on the right page of the manuscript. The text is arranged in approximately 12 horizontal lines, starting from the top right and moving towards the center. The script is highly stylized and characteristic of early modern European handwriting.

Handwritten text in cursive script, likely a list or account, written on the left page of the manuscript. The text is arranged in approximately 12 horizontal lines, starting from the top left and moving towards the center. The script is highly stylized and characteristic of early modern European handwriting.

[Faint, illegible handwriting in a cursive script, likely a historical document or manuscript.]

