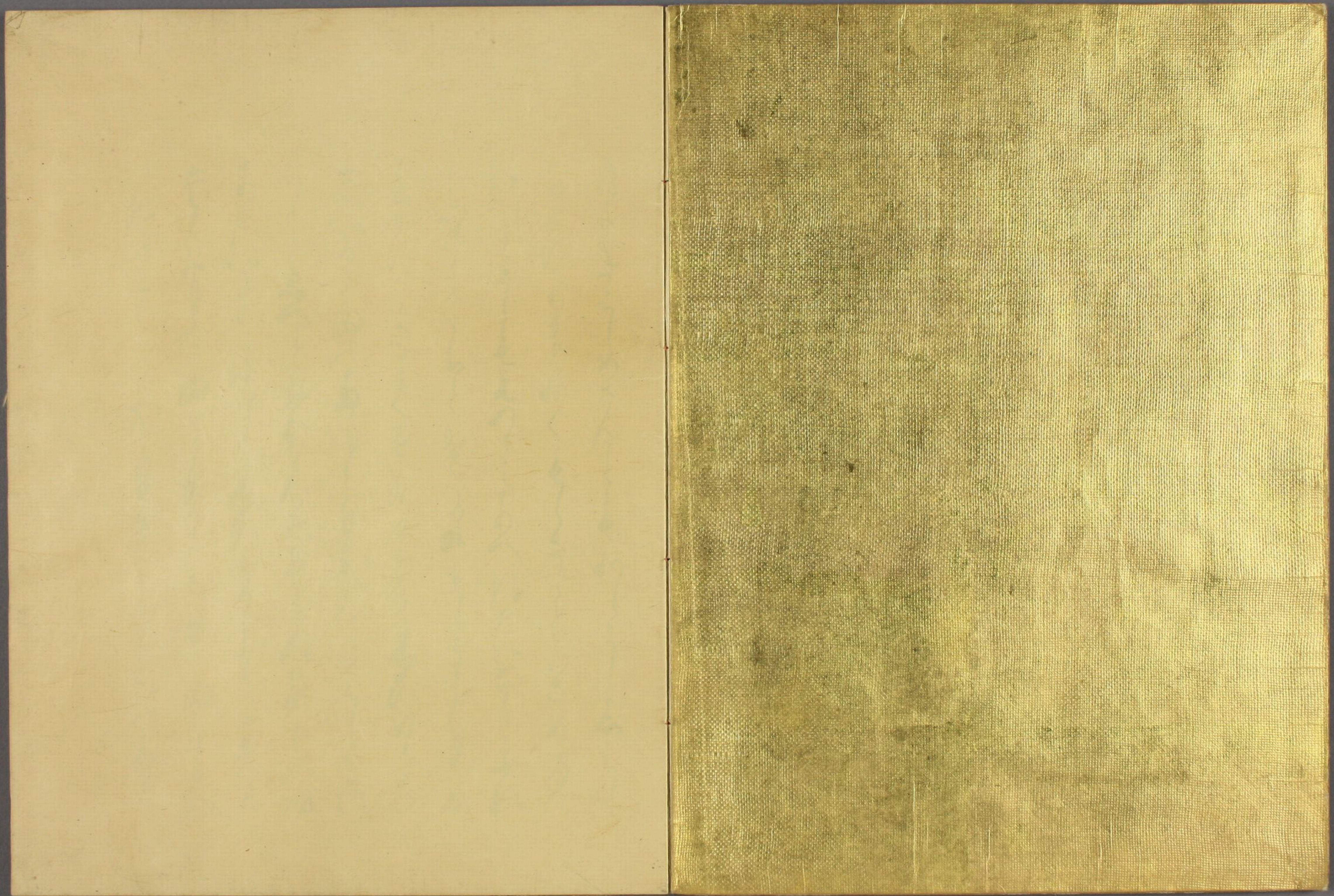




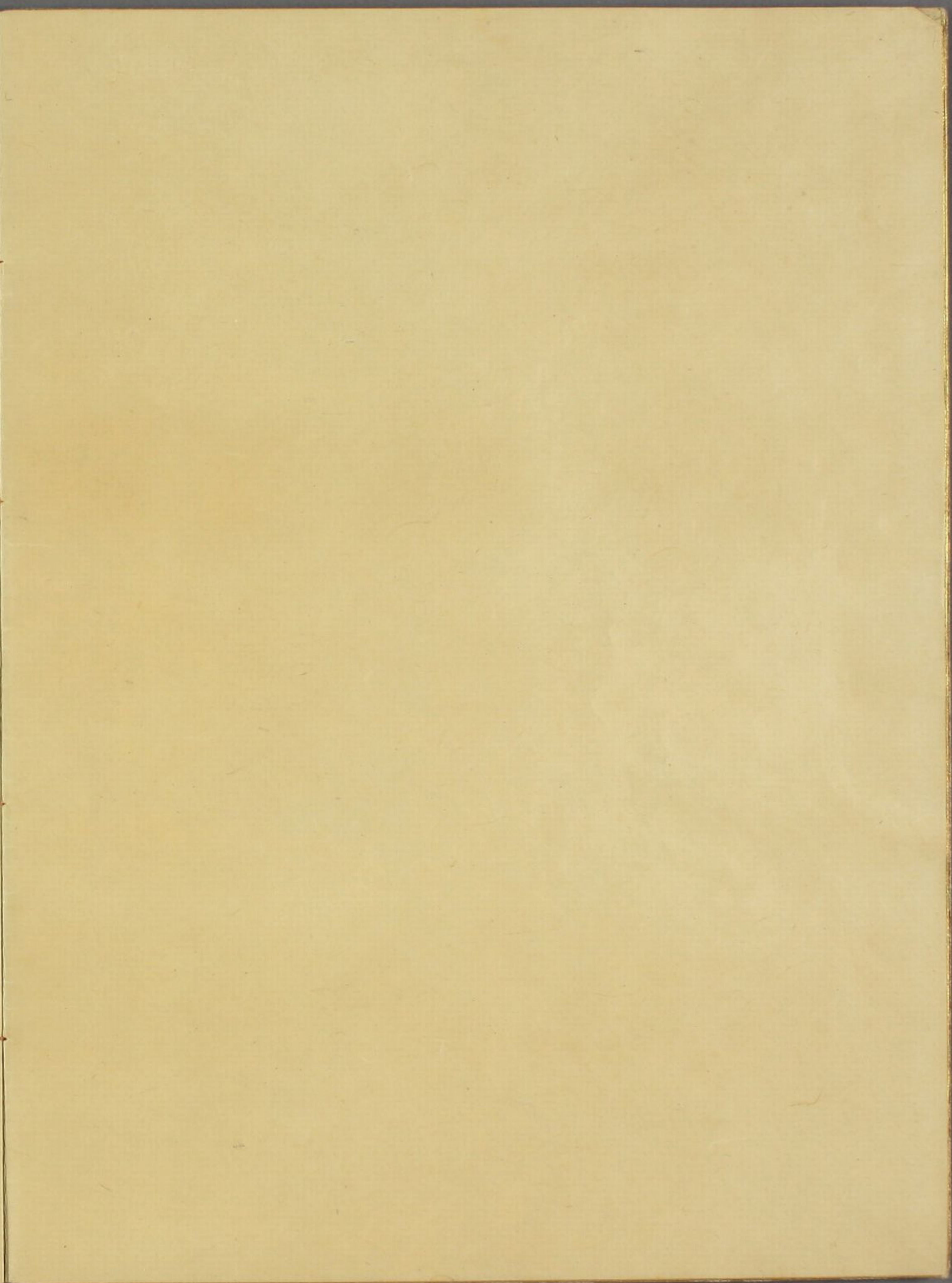
Handwritten calligraphy in black ink, likely the title of the book.

特別
〜 2
4867
51 (31)





Handwritten text in a cursive script, likely a letter or document, written on the left page of an open book. The text is arranged in approximately 12 lines, flowing from right to left across the page. The ink is dark, and the script is highly stylized and fluid.



Handwritten text in a cursive script, likely a historical document or manuscript. The text is written in a single column on the left page of an open book. The script is dense and flowing, with many loops and flourishes. The ink is dark and the paper is aged and yellowed.

Handwritten text in a cursive script, continuing from the previous page. The text is written in a single column on the right page of an open book. The script is dense and flowing, with many loops and flourishes. The ink is dark and the paper is aged and yellowed.

Handwritten text in a cursive script, likely a historical document or letter. The text is written in a dark ink on aged, yellowish paper. It consists of approximately 12 lines of text, starting with a large initial letter 'D'.

Handwritten text in a cursive script, likely a historical document or letter. The text is written in a dark ink on aged, yellowish paper. It consists of approximately 12 lines of text, starting with a large initial letter 'D'.

Handwritten text in a cursive script, likely a letter or document, written on the left page of an open manuscript. The text is dense and fills most of the page.

Handwritten text in a cursive script, likely a letter or document, written on the right page of an open manuscript. The text is dense and fills most of the page.

Handwritten text in a cursive script, likely a letter or document, covering the left page of the manuscript.

Handwritten text in a cursive script, likely a letter or document, covering the right page of the manuscript.

Handwritten text in a cursive script, likely a letter or a page from a manuscript. The text is written in dark ink on aged, yellowish paper. It consists of approximately 12 lines of text, starting with a capital letter 'S' and ending with a period. The script is highly stylized and difficult to decipher without a key.

Handwritten text in a cursive script, likely a letter or a page from a manuscript. The text is written in dark ink on aged, yellowish paper. It consists of approximately 12 lines of text, starting with a capital letter 'S' and ending with a period. The script is highly stylized and difficult to decipher without a key.

Handwritten text in a cursive script, likely a historical document or manuscript. The text is written in a fluid, connected style across approximately 12 lines on the left page.

Handwritten text in a cursive script, likely a historical document or manuscript. The text is written in a fluid, connected style across approximately 12 lines on the right page.

Handwritten text in a cursive script, likely a letter or document, written on the left page of an open manuscript. The text is arranged in approximately 12 horizontal lines, flowing from right to left across the page. The ink is dark and the script is highly stylized and connected.

Handwritten text in a cursive script, likely a letter or document, written on the right page of an open manuscript. The text is arranged in approximately 12 horizontal lines, flowing from right to left across the page. The ink is dark and the script is highly stylized and connected.

Handwritten text in a cursive script, likely a historical document or letter, spanning the left page of the manuscript.

Handwritten text in a cursive script, likely a historical document or letter, spanning the right page of the manuscript.

Handwritten text in a cursive script, likely a historical document or letter, written on the left page of an open manuscript. The text is arranged in approximately 12 horizontal lines, flowing from right to left across the page. The ink is dark and the script is highly stylized and fluid.

Handwritten text in a cursive script, likely a historical document or letter, written on the right page of an open manuscript. The text is arranged in approximately 12 horizontal lines, flowing from right to left across the page. The ink is dark and the script is highly stylized and fluid.

Handwritten text in a cursive script, likely a form of shorthand or a specific dialect. The text is arranged in approximately 12 horizontal lines across the page.

Handwritten text in a cursive script, likely a form of shorthand or a specific dialect. The text is arranged in approximately 12 horizontal lines across the page.

Handwritten text in a cursive script, likely a historical document or manuscript. The text is written in a dark ink on aged, yellowish paper. It consists of approximately 15 lines of text, starting with a large initial letter 'L' on the left side of the page. The script is highly stylized and difficult to decipher without a key.

Handwritten text in a cursive script, continuing from the previous page. The text is written in a dark ink on aged, yellowish paper. It consists of approximately 15 lines of text, starting with a large initial letter 'L' on the left side of the page. The script is highly stylized and difficult to decipher without a key.

Handwritten text in a cursive script, likely a letter or a page from a manuscript. The text is written in a fluid, connected style across approximately 12 lines.

Handwritten text in a cursive script, likely a letter or a page from a manuscript. The text is written in a fluid, connected style across approximately 12 lines.

Handwritten text in a cursive script, likely a historical document or letter. The text is written in dark ink on aged, yellowish paper. It consists of approximately 12 lines of text, starting with a large initial letter 'C' and ending with a flourish. The script is highly stylized and characteristic of the 17th or 18th century.

Handwritten text in a cursive script, continuing from the previous page. The text is written in dark ink on aged, yellowish paper. It consists of approximately 12 lines of text, starting with a large initial letter 'C' and ending with a flourish. The script is highly stylized and characteristic of the 17th or 18th century.

Handwritten text in a cursive script, likely a historical document or letter. The text is written in dark ink on aged, yellowish paper. It consists of approximately 12 lines of text, starting with a large initial letter 'A'.

Handwritten text in a cursive script, likely a historical document or letter. The text is written in dark ink on aged, yellowish paper. It consists of approximately 12 lines of text, starting with a large initial letter 'A'.

Handwritten text in a cursive script, likely a letter or document, spanning the left page of the manuscript.

Handwritten text in a cursive script, likely a letter or document, spanning the right page of the manuscript.

Handwritten text in a cursive script, likely a letter or document, written on the right page of an open manuscript. The text is dense and fills most of the page.

Handwritten text in a cursive script, likely a letter or document, written on the left page of an open manuscript. The text is dense and fills most of the page.

Handwritten text in a cursive script, likely a letter or document, covering the left page of the manuscript.

Handwritten text in a cursive script, likely a letter or document, covering the right page of the manuscript.

Handwritten text in a cursive script, likely a letter or document, written on the left page of an open manuscript. The text is dense and fills most of the page.

Handwritten text in a cursive script, likely a letter or document, written on the right page of an open manuscript. The text is dense and fills most of the page.

Handwritten text in a cursive script, likely a letter or document, written on the left page of an open manuscript. The text is dense and fills most of the page.

Handwritten text in a cursive script, likely a letter or document, written on the right page of an open manuscript. The text is dense and fills most of the page.

Handwritten text in cursive script, likely a letter or document, covering the left page of the manuscript.

Handwritten text in cursive script, likely a letter or document, covering the right page of the manuscript.

Handwritten text in Arabic script, first line of the left page.

Handwritten text in Arabic script, second line of the left page.

Handwritten text in Arabic script, third line of the left page.

Handwritten text in Arabic script, spanning the entire right page.

Handwritten text in a cursive script, likely a letter or a page from a manuscript. The text is written in a dark ink on aged, yellowish paper. The script is highly stylized and difficult to decipher, but appears to be a continuous flow of words. The text is arranged in approximately 12 lines across the page.

Handwritten text in a cursive script, continuing from the previous page. The text is written in a dark ink on aged, yellowish paper. The script is highly stylized and difficult to decipher, but appears to be a continuous flow of words. The text is arranged in approximately 12 lines across the page.

Handwritten text in a cursive script, likely a historical document or manuscript. The text is written in a dark ink on aged paper. It consists of approximately 12 lines of text, starting with a large initial letter 'D'. The script is highly stylized and characteristic of the early modern period.

Handwritten text in a cursive script, continuing from the previous page. The text is written in a dark ink on aged paper. It consists of approximately 12 lines of text, starting with a large initial letter 'S'. The script is highly stylized and characteristic of the early modern period.

Handwritten text in a cursive script, likely a historical document or letter. The text is written in a dark ink on aged, yellowish paper. It consists of approximately 12 lines of text, starting with a large initial letter 'S' and ending with a flourish. The script is highly stylized and characteristic of the 17th or 18th century.

Handwritten text in a cursive script, continuing from the previous page. It consists of approximately 12 lines of text, starting with a large initial letter 'S' and ending with a flourish. The script is highly stylized and characteristic of the 17th or 18th century.

Handwritten text in a cursive script, likely a letter or document, written on the left page of an open manuscript. The text is arranged in approximately 12 horizontal lines, flowing from right to left across the page.

Handwritten text in a cursive script, likely a letter or document, written on the right page of an open manuscript. The text is arranged in approximately 12 horizontal lines, flowing from right to left across the page.

Handwritten text in Arabic script, consisting of approximately 14 lines of dense, cursive writing.

Handwritten text in Arabic script, consisting of approximately 14 lines of dense, cursive writing.

Handwritten text in a cursive script, likely a form of shorthand or a specific dialect. The text is arranged in approximately 14 horizontal lines across the page.

Handwritten text in a cursive script, likely a form of shorthand or a specific dialect. The text is arranged in approximately 14 horizontal lines across the page.

Handwritten text in a cursive script, likely a letter or document, written on the right page of an open book. The text is written in a fluid, connected style with various flourishes and loops. It appears to be a personal or official communication.

Handwritten text in a cursive script, likely a letter or document, written on the left page of an open book. The text is written in a fluid, connected style with various flourishes and loops, mirroring the style on the opposite page. It appears to be a personal or official communication.

Handwritten text in a cursive script, likely a personal letter or diary entry. The text is written in a fluid, connected style across approximately 12 lines. The ink is dark and the paper shows signs of age.

Handwritten text in a cursive script, continuing from the previous page. The text is written in a fluid, connected style across approximately 12 lines. The ink is dark and the paper shows signs of age.

Handwritten text in a cursive script, likely a letter or document, written on the left page of an open manuscript. The text is arranged in approximately 12 horizontal lines, starting from the top left and moving towards the bottom right. The ink is dark, and the script is highly stylized and fluid.

Handwritten text in a cursive script, likely a letter or document, written on the right page of an open manuscript. The text is arranged in approximately 12 horizontal lines, starting from the top left and moving towards the bottom right. The ink is dark, and the script is highly stylized and fluid.

Handwritten text in a cursive script, likely a historical document or letter, written on the left page of an open manuscript. The text is arranged in approximately 12 horizontal lines, flowing from right to left across the page.

Handwritten text in a cursive script, likely a historical document or letter, written on the right page of an open manuscript. The text is arranged in approximately 12 horizontal lines, flowing from right to left across the page.

Handwritten text in a cursive script, likely a letter or document, written on the left page of an open manuscript. The text is arranged in approximately 12 horizontal lines, flowing from right to left across the page. The ink is dark and the script is highly stylized and connected.

Handwritten text in a cursive script, likely a letter or document, written on the right page of an open manuscript. The text is arranged in approximately 12 horizontal lines, flowing from right to left across the page. The ink is dark and the script is highly stylized and connected.

Handwritten text in cursive script, likely a letter or document, spanning the left page.

Handwritten text in cursive script, likely a letter or document, spanning the right page.

Handwritten text in cursive script, likely a letter or document, written on the left page of an open book. The text is dense and fills most of the page.

Handwritten text in cursive script, likely a letter or document, written on the right page of an open book. The text is dense and fills most of the page.

Handwritten text in a cursive script, likely a letter or document, written on the left page of an open manuscript. The text is arranged in approximately 12 horizontal lines, flowing from right to left across the page. The ink is dark and the script is highly stylized and connected.

Handwritten text in a cursive script, likely a letter or document, written on the right page of an open manuscript. The text is arranged in approximately 12 horizontal lines, flowing from right to left across the page. The ink is dark and the script is highly stylized and connected.

Handwritten text in cursive script, likely a letter or document, covering the left page of the manuscript. The text is written in a fluid, connected style characteristic of 17th-century cursive.

Handwritten text in cursive script, likely a letter or document, covering the right page of the manuscript. The text continues from the left page, maintaining the same fluid, connected style.

Handwritten text in a cursive script, likely a historical document or manuscript. The text is written in a dark ink on aged, yellowish paper. It consists of approximately 12 lines of text, starting with a large initial letter. The script is highly stylized and difficult to decipher without a key.

Handwritten text in a cursive script, likely a historical document or manuscript. The text is written in a dark ink on aged, yellowish paper. It consists of approximately 12 lines of text, starting with a large initial letter. The script is highly stylized and difficult to decipher without a key.

Handwritten text in a cursive script, likely a letter or a page from a manuscript. The text is written in black ink on aged, yellowish paper. The script is highly stylized and difficult to decipher. The text is arranged in approximately 12 horizontal lines across the page.



Handwritten text in a cursive script, continuing from the previous page. The text is written in black ink on aged, yellowish paper. The script is highly stylized and difficult to decipher. The text is arranged in approximately 12 horizontal lines across the page.

Handwritten text in a cursive script, likely a personal letter or a short story. The text is written in a fluid, connected style across approximately 12 lines.

Handwritten text in a cursive script, continuing from the previous page. The text is written in a fluid, connected style across approximately 12 lines.

Handwritten text in cursive script, likely a letter or document, written on the left page of an open manuscript. The text is dense and fills most of the page.

Handwritten text in cursive script, likely a letter or document, written on the right page of an open manuscript. The text is dense and fills most of the page.

1850



