



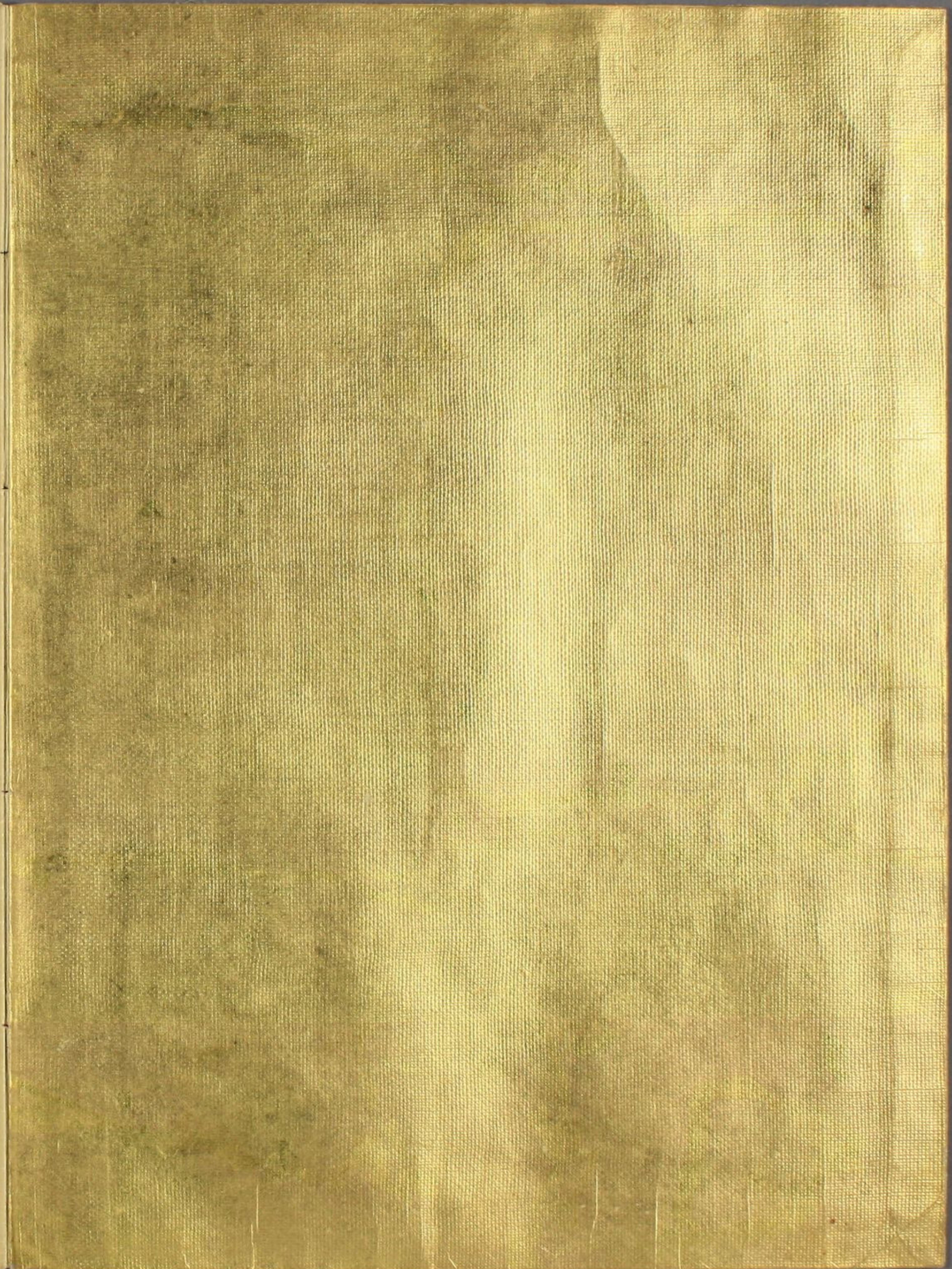
二入

特別  
〜 2  
4867  
51 (24)



B

Handwritten Japanese text in cursive style (sōsho), arranged in vertical columns from right to left. The text is very faint and difficult to read.





Handwritten text in cursive script, likely a letter or document, written on the right page of the manuscript. The text is dense and fills most of the page.

Handwritten text in cursive script, likely a letter or document, written on the left page of the manuscript. The text is dense and fills most of the page.

Handwritten text in cursive script, likely a letter or document, spanning the left page and the top of the right page.

Handwritten text in cursive script, continuing from the left page and filling the right page.



Handwritten text in a cursive script, likely a musical score or a list of names, spanning the left page of the manuscript.

Handwritten text in a cursive script, likely a musical score or a list of names, spanning the right page of the manuscript.





Handwritten text in a cursive script, likely a letter or a personal note. The text is written in a fluid, connected style, characteristic of 18th-century cursive. The lines are roughly horizontal and fill most of the page.

Handwritten text in a cursive script, similar to the first page. The writing is dense and fills the page from top to bottom. The ink is dark, and the paper shows signs of age.

Handwritten text in cursive script, likely a letter or document, written on the right page of the manuscript. The text is dense and fills most of the page.

Handwritten text in cursive script, likely a letter or document, written on the left page of the manuscript. The text is dense and fills most of the page.



Handwritten text in a cursive script, likely a letter or a page from a manuscript. The text is written in a fluid, connected style across approximately 12 lines.

Handwritten text in a cursive script, continuing from the previous page. The text is written in a fluid, connected style across approximately 12 lines.

Handwritten text in a cursive script, likely a historical document or letter, written on aged paper. The text is arranged in approximately 12 lines, starting from the top right and moving downwards. The script is highly stylized and difficult to decipher without a key.



Handwritten text in a cursive script, likely a musical score or a list of names, written on the left page of the manuscript. The text is arranged in approximately 12 horizontal lines, starting from the top left and moving downwards. The ink is dark and the handwriting is fluid and connected.

Handwritten text in a cursive script, likely a musical score or a list of names, written on the right page of the manuscript. The text is arranged in approximately 12 horizontal lines, starting from the top left of the page and moving downwards. The ink is dark and the handwriting is fluid and connected.

Handwritten text in a cursive script, likely Persian or Urdu, consisting of approximately 12 lines of text.

Handwritten text in a cursive script, likely Persian or Urdu, consisting of approximately 12 lines of text.



Handwritten text in cursive script, likely a letter or document, written on the right page of the manuscript.

Handwritten text in cursive script, likely a letter or document, written on the left page of the manuscript.

Handwritten text in cursive script, likely a letter or document, written on the right page of the manuscript.

Handwritten text in a cursive script, likely a historical document or manuscript. The text is written in a single column on the left page of an open book. The script is dense and flowing, characteristic of early modern cursive. The ink is dark, and the paper shows signs of age and wear.

Handwritten text in a cursive script, continuing from the left page. The text is written in a single column on the right page of an open book. The script is dense and flowing, characteristic of early modern cursive. The ink is dark, and the paper shows signs of age and wear.

Handwritten text in a cursive script, likely a letter or document, written on the left page of an open manuscript. The text is dense and fills most of the page.

Handwritten text in a cursive script, likely a letter or document, written on the right page of an open manuscript. The text is dense and fills most of the page.

Handwritten text in a cursive script, likely a personal letter or diary entry. The text is written in a fluid, connected style across approximately 12 lines. The ink is dark and the paper shows signs of age.

Handwritten text in a cursive script, continuing from the previous page. The text is written in a fluid, connected style across approximately 12 lines. The ink is dark and the paper shows signs of age.

Handwritten text in cursive script, likely a list or account, written on the right page of the manuscript. The text is arranged in approximately 12 horizontal lines, starting from the top right and moving downwards. The script is highly stylized and difficult to decipher.

Handwritten text in cursive script, likely a list or account, written on the left page of the manuscript. The text is arranged in approximately 12 horizontal lines, starting from the top left and moving downwards. The script is highly stylized and difficult to decipher.

Handwritten text in a cursive script, consisting of approximately 12 lines of text.

Handwritten text in a cursive script, consisting of approximately 12 lines of text.

Handwritten text in a cursive script, likely a letter or document, written on the left page of an open manuscript. The text is arranged in approximately 12 horizontal lines, flowing from right to left across the page. The ink is dark and the handwriting is fluid and connected.

Handwritten text in a cursive script, likely a letter or document, written on the right page of an open manuscript. The text is arranged in approximately 12 horizontal lines, flowing from right to left across the page. The ink is dark and the handwriting is fluid and connected.

Handwritten text in a cursive script, likely a historical document or manuscript. The text is written in a dark ink on aged, yellowish paper. It consists of approximately 15 lines of text, starting with a large initial letter 'A' and ending with a period. The script is highly stylized and difficult to decipher without a key.

Handwritten text in a cursive script, likely a historical document or manuscript. The text is written in a dark ink on aged, yellowish paper. It consists of approximately 15 lines of text, starting with a large initial letter 'A' and ending with a period. The script is highly stylized and difficult to decipher without a key.



Handwritten text in a cursive script, likely a historical document or letter. The text is written in a dark ink on aged, yellowish paper. It consists of approximately 15 lines of text, starting with a large initial letter 'F' on the left side of the page.

Handwritten text in a cursive script, likely a historical document or letter. The text is written in a dark ink on aged, yellowish paper. It consists of approximately 15 lines of text, starting with a large initial letter 'F' on the left side of the page.

Handwritten text in cursive script, likely a page from a manuscript or letter. The text is written in black ink on aged, yellowish paper. It consists of approximately 12 lines of dense, flowing handwriting.

Handwritten text in cursive script, continuing from the previous page. The text is written in black ink on aged, yellowish paper. It consists of approximately 12 lines of dense, flowing handwriting.

Handwritten text in Arabic script, consisting of approximately 12 lines of dense, cursive writing.



Handwritten text in Arabic script, continuing from the previous page, consisting of approximately 12 lines of dense, cursive writing.

Handwritten text in cursive script, likely a letter or document, written on the left page of the manuscript.

Handwritten text in cursive script, likely a letter or document, written on the right page of the manuscript.

Handwritten text in a cursive script, likely a letter or document, written on the left page of an open book. The text is dense and fills most of the page.

Handwritten text in a cursive script, likely a letter or document, written on the right page of an open book. The text is dense and fills most of the page.

Handwritten text in cursive script, consisting of approximately 12 lines of text.

Handwritten text in cursive script, consisting of approximately 12 lines of text.

Handwritten text in Arabic script, consisting of approximately 12 lines of dense, cursive writing.

Handwritten text in Arabic script, consisting of approximately 12 lines of dense, cursive writing.

