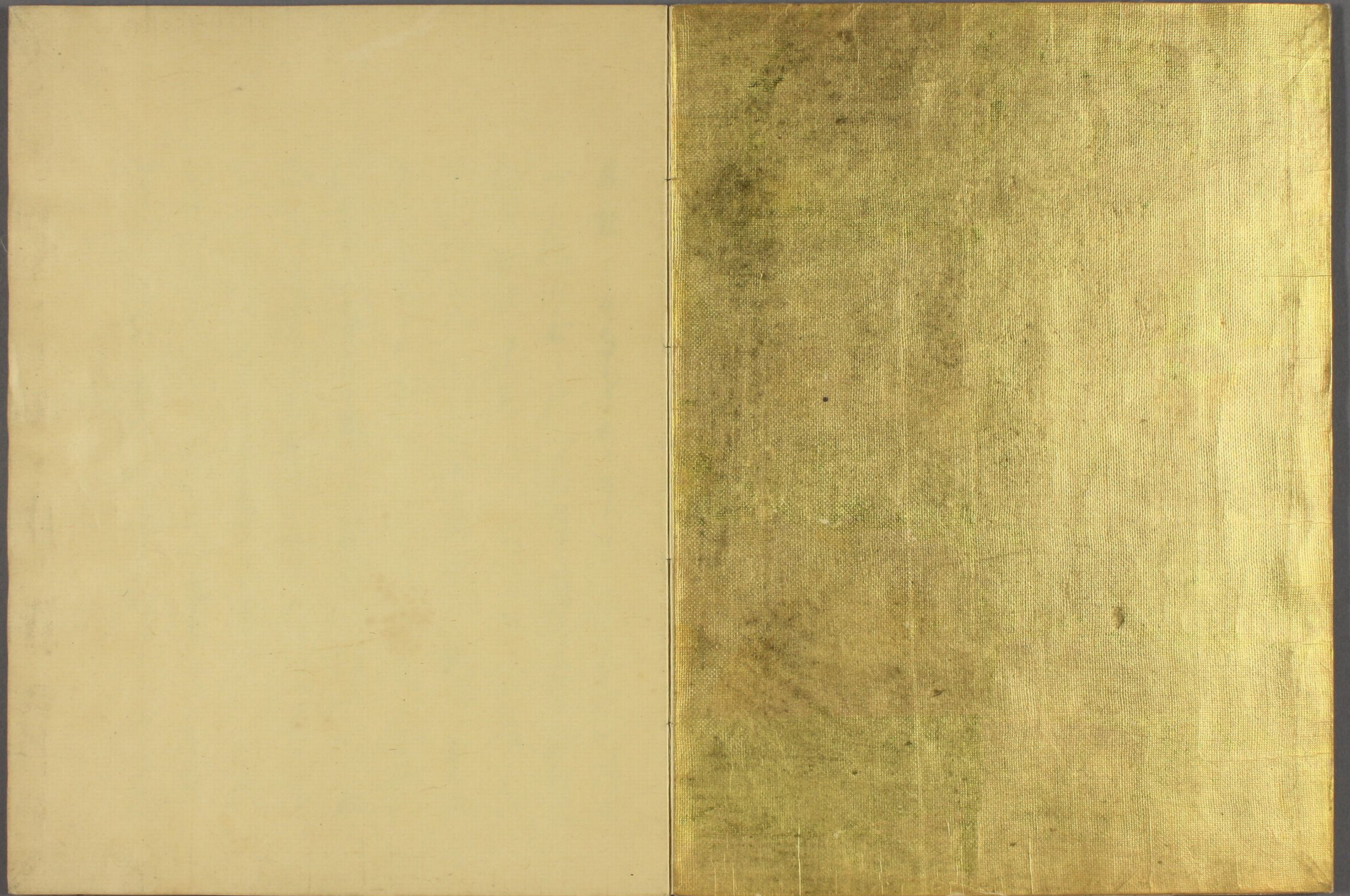




東洋花

特別
~ 2
4867
51(6)





Handwritten text in Arabic script, consisting of approximately 12 lines of cursive script.



Handwritten text in a cursive script, likely a letter or document, written on the left page of the manuscript. The text is arranged in approximately 12 horizontal lines, starting from the top left and moving towards the bottom right. The ink is dark and the handwriting is fluid and connected.

Handwritten text in a cursive script, likely a letter or document, written on the right page of the manuscript. The text is arranged in approximately 12 horizontal lines, starting from the top left and moving towards the bottom right. The ink is dark and the handwriting is fluid and connected.

Handwritten text in cursive script, likely a letter or document, spanning the left page.

Handwritten text in cursive script, likely a letter or document, spanning the right page.

Handwritten text in a cursive script, likely a historical document or letter. The text is written in a dark ink on aged, yellowish paper. It consists of approximately 12 lines of text, starting with a long horizontal stroke at the top. The script is highly stylized and difficult to decipher without a key.

Handwritten text in a cursive script, continuing from the previous page. It consists of approximately 12 lines of text, starting with a long horizontal stroke at the top. The script is highly stylized and difficult to decipher without a key.

Handwritten text in a cursive script, likely a list or account, consisting of approximately 14 lines of text.

Handwritten text in a cursive script, continuing the list or account from the previous page, consisting of approximately 14 lines of text.

Handwritten text in a cursive script, likely a historical document or letter. The text is written in a dark ink on aged, yellowish paper. It consists of approximately 12 lines of text, starting with a large initial letter. The script is highly stylized and characteristic of the early modern period.

Handwritten text in a cursive script, continuing from the previous page. The text is written in a dark ink on aged, yellowish paper. It consists of approximately 12 lines of text, starting with a large initial letter. The script is highly stylized and characteristic of the early modern period.

Handwritten text in cursive script, consisting of approximately 12 lines of text.



Handwritten text in cursive script, consisting of approximately 12 lines of text.

Handwritten text in a cursive script, likely a letter or document, written on the left page of the manuscript.



Handwritten text in a cursive script, continuing from the left page, written on the right page of the manuscript.

Handwritten text in a cursive script, consisting of approximately 12 lines of text.



Handwritten text in a cursive script, consisting of approximately 12 lines of text.

Handwritten text in a cursive script, likely a letter or a page from a manuscript. The text is written in dark ink on aged, yellowish paper. The script is highly stylized and difficult to decipher without a key. The text is arranged in approximately 12 horizontal lines across the page.



Handwritten text in a cursive script, continuing from the previous page. The text is written in dark ink on aged, yellowish paper. The script is highly stylized and difficult to decipher without a key. The text is arranged in approximately 12 horizontal lines across the page.

Handwritten text in a cursive script, likely a historical document or letter, written on the left page of an open manuscript. The text is arranged in approximately 12 horizontal lines, flowing from right to left across the page. The ink is dark and the script is highly stylized and fluid.

Handwritten text in a cursive script, likely a historical document or letter, written on the right page of an open manuscript. The text is arranged in approximately 12 horizontal lines, flowing from right to left across the page. The ink is dark and the script is highly stylized and fluid.

Handwritten text in a cursive script, likely a letter or document, spanning the left page of the manuscript. The text is written in dark ink on aged, yellowish paper. It consists of approximately 12 lines of text, starting with a small flourish at the top left. The script is highly stylized and fluid, characteristic of 17th or 18th-century cursive handwriting. The lines are closely spaced and flow across the page from top to bottom.



Handwritten text in a cursive script, likely a letter or document, spanning the right page of the manuscript. The text is written in dark ink on aged, yellowish paper. It consists of approximately 12 lines of text, continuing from the left page. The script is highly stylized and fluid, characteristic of 17th or 18th-century cursive handwriting. The lines are closely spaced and flow across the page from top to bottom, ending with a small flourish at the bottom right.

Handwritten text in a cursive script, likely a letter or document, written on the left page of an open manuscript. The text is dense and fills most of the page.



Handwritten text in a cursive script, continuing from the left page, written on the right page of an open manuscript. The text is dense and fills most of the page.

Handwritten text in a cursive script, likely a letter or document, written on the left page of an open manuscript. The text is dense and fills most of the page.



Handwritten text in a cursive script, continuing from the left page, written on the right page of an open manuscript. The text is dense and fills most of the page.

Handwritten text in a cursive script, likely a letter or a page from a manuscript. The text is written in a fluid, connected style across approximately 12 lines.

Small handwritten mark or signature at the bottom center of the page.

Handwritten text in a cursive script, continuing from the previous page. The text is written in a fluid, connected style across approximately 12 lines.

Handwritten text in cursive script, likely a letter or document, written on the left page of the manuscript. The text is dense and fills most of the page.

Handwritten text in cursive script, likely a letter or document, written on the right page of the manuscript. The text is dense and fills most of the page.

Handwritten text in a cursive script, likely Persian or Urdu, consisting of approximately 12 lines of text.

۱

Handwritten text in a cursive script, likely Persian or Urdu, consisting of approximately 12 lines of text.

Handwritten text in a cursive script, likely a personal letter or diary entry. The text is written in dark ink on aged, yellowish paper. It consists of approximately 12 lines of text, starting with a small flourish at the top left. The script is fluid and somewhat slanted, characteristic of 18th or 19th-century cursive handwriting. The lines are closely spaced and fill most of the page.

Handwritten text in a cursive script, continuing from the previous page. It consists of approximately 12 lines of text, starting with a small flourish at the top left. The script is fluid and somewhat slanted, characteristic of 18th or 19th-century cursive handwriting. The lines are closely spaced and fill most of the page.

Handwritten text in cursive script, consisting of approximately 10 lines of text.

Handwritten text in cursive script, consisting of approximately 10 lines of text.

Handwritten text in cursive script, consisting of approximately 10 lines of text.

Handwritten text in cursive script, consisting of approximately 10 lines of text.

Handwritten text in a cursive script, likely a historical document or letter, spanning the left page.

Handwritten text in a cursive script, likely a historical document or letter, spanning the right page.

Handwritten text at the bottom of the right page, possibly a signature or a closing phrase.

Handwritten text in cursive script, likely a letter or document, written on the left page of an open book. The text is dense and fills most of the page.

Handwritten text in cursive script, likely a letter or document, written on the right page of an open book. The text is dense and fills most of the page.

Handwritten text in cursive script, consisting of approximately 12 lines of dense, flowing handwriting.

Handwritten text in cursive script, consisting of approximately 12 lines of dense, flowing handwriting.

Handwritten text in a cursive script, likely a historical document or manuscript. The text is written in a dark ink on aged, yellowish paper. It consists of approximately 15 lines of text, starting from the top left and moving downwards. The script is highly stylized and difficult to decipher without a key or context. The lines are roughly horizontal but show some waviness due to the cursive nature of the writing.

Handwritten text in a cursive script, continuing from the previous page. The text is written in a dark ink on aged, yellowish paper. It consists of approximately 15 lines of text, starting from the top left and moving downwards. The script is highly stylized and difficult to decipher without a key or context. The lines are roughly horizontal but show some waviness due to the cursive nature of the writing.

Handwritten text in a cursive script, likely a letter or document, written on the left page of an open manuscript. The text is arranged in approximately 12 horizontal lines, starting from the top left and moving downwards. The ink is dark, and the paper shows signs of age and wear.

Handwritten text in a cursive script, likely a letter or document, written on the right page of an open manuscript. The text is arranged in approximately 12 horizontal lines, starting from the top left and moving downwards. The ink is dark, and the paper shows signs of age and wear.

Handwritten text in a cursive script, likely a letter or a page from a manuscript. The text is written in a fluid, connected style across approximately 12 lines.

Handwritten text in a cursive script, continuing from the previous page. The text is written in a fluid, connected style across approximately 12 lines.

Handwritten text in a cursive script, likely a personal letter or diary entry. The text is written in dark ink on aged, yellowish paper. It consists of approximately 12 lines of text, starting with a capital letter 'L' and ending with a period. The handwriting is fluid and characteristic of the 18th or 19th century.

Handwritten text in a cursive script, continuing from the previous page. It consists of approximately 12 lines of text, starting with a capital letter 'L' and ending with a period. The handwriting is consistent with the previous page, showing a high level of fluency and personal style.

Handwritten text in a cursive script, likely a letter or a page from a manuscript. The text is written in dark ink on aged, yellowish paper. It consists of approximately 12 lines of text, starting with a large initial letter. The script is highly stylized and characteristic of the 17th or 18th century.



Handwritten text in a cursive script, continuing from the previous page. The text is written in dark ink on aged, yellowish paper. It consists of approximately 12 lines of text, starting with a large initial letter. The script is highly stylized and characteristic of the 17th or 18th century.

Handwritten text in a cursive script, likely a letter or document, written on the left page of an open manuscript. The text is dense and fills most of the page.

Handwritten text in a cursive script, likely a letter or document, written on the right page of an open manuscript. The text is dense and fills most of the page.

Handwritten text in cursive script, consisting of approximately 10 lines of text, located on the right page of the manuscript.

