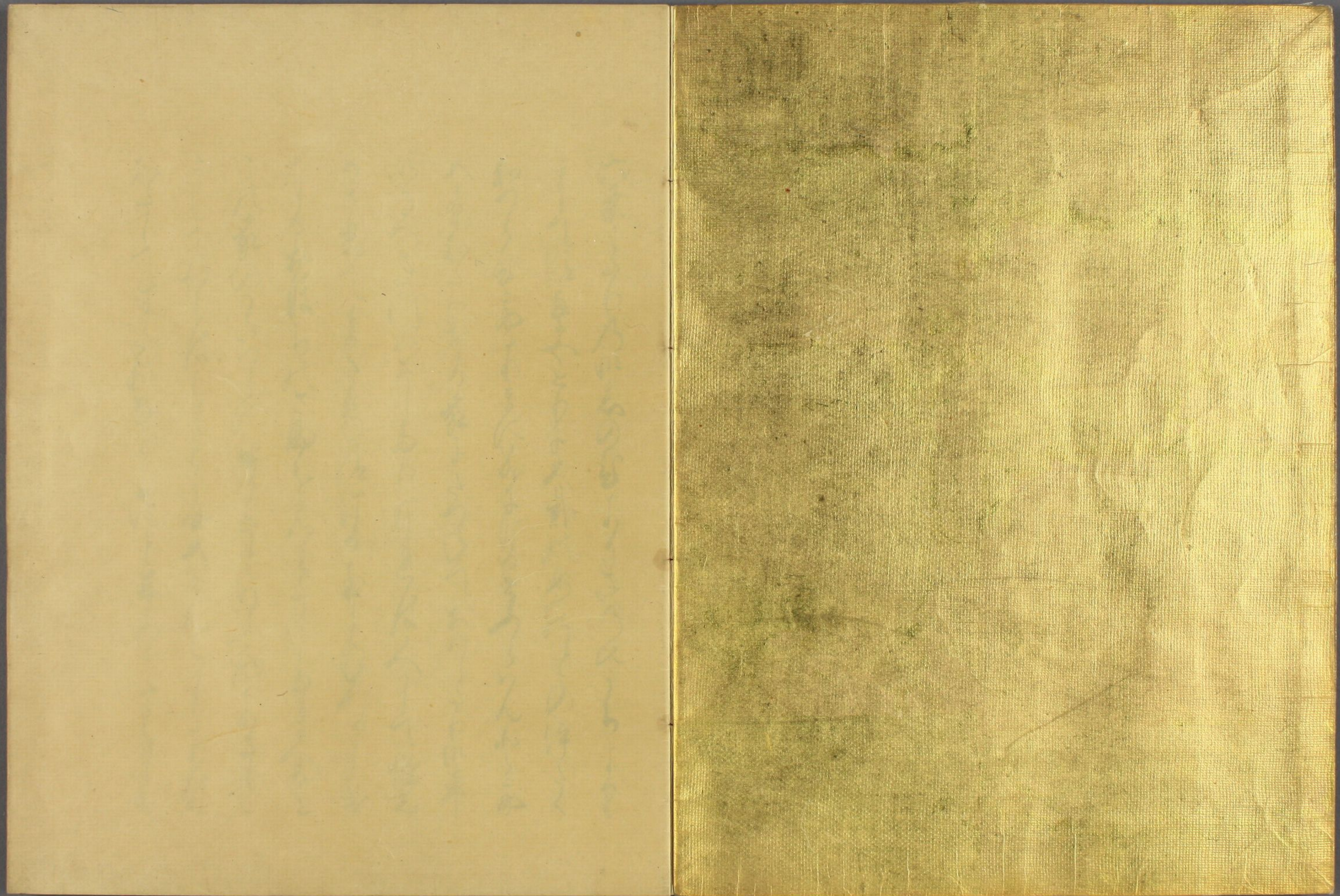




7
10

特別
~ 2
4867
51 (4)





Handwritten text in cursive script, likely a letter or document, written on the left page of an open book. The text is dense and fills most of the page.

Handwritten text in cursive script, likely a letter or document, written on the right page of an open book. The text is dense and fills most of the page.

Handwritten text in a cursive script, likely a historical document or letter, spanning the left page of the manuscript.

Handwritten text in a cursive script, likely a historical document or letter, spanning the right page of the manuscript.

Handwritten text in a cursive script, likely a letter or document, written on the left page of an open manuscript. The text is dense and fills most of the page.

Handwritten text in a cursive script, likely a letter or document, written on the right page of an open manuscript. The text is dense and fills most of the page.

Handwritten text in a cursive script, likely a historical document or letter. The text is written in a dark ink on aged, yellowish paper. It consists of approximately 12 lines of text, starting with a large initial letter. The script is highly stylized and characteristic of the early modern period.

Handwritten text in a cursive script, continuing from the previous page. The text is written in a dark ink on aged, yellowish paper. It consists of approximately 12 lines of text, starting with a large initial letter. The script is highly stylized and characteristic of the early modern period.

Handwritten text in cursive script, likely a letter or document. The text is written in a fluid, connected style across approximately 12 lines. The ink is dark and the paper shows signs of age.



Handwritten text in cursive script, continuing from the left page. The text is written in a fluid, connected style across approximately 12 lines. The ink is dark and the paper shows signs of age.

Handwritten text in a cursive script, likely a letter or a page from a manuscript. The text is written in a fluid, connected style across approximately 12 lines.

Handwritten text in a cursive script, continuing from the previous page. The text is written in a fluid, connected style across approximately 12 lines.

Handwritten text in a cursive script, likely a historical document or letter. The text is written in a dark ink on aged, yellowish paper. It consists of approximately 14 lines of text, starting with a large initial letter 'K'.

Handwritten text in a cursive script, likely a historical document or letter. The text is written in a dark ink on aged, yellowish paper. It consists of approximately 14 lines of text, starting with a large initial letter 'K'.

Handwritten text in a cursive script, likely a historical document or letter. The text is written in a dark ink on aged, yellowish paper. It consists of approximately 12 lines of text, starting with a large initial letter 'S' and ending with a flourish. The script is highly stylized and characteristic of the 17th or 18th century.

Handwritten text in a cursive script, continuing from the previous page. The text is written in a dark ink on aged, yellowish paper. It consists of approximately 12 lines of text, starting with a large initial letter 'S' and ending with a flourish. The script is highly stylized and characteristic of the 17th or 18th century.

Handwritten text in a cursive script, likely a historical document or manuscript, consisting of approximately 13 lines of text.

Handwritten text in a cursive script, likely a historical document or manuscript, consisting of approximately 13 lines of text.

Handwritten text in cursive script, likely a letter or document, written on the right page of the manuscript. The text is dense and fills most of the page.

Handwritten text in cursive script, likely a letter or document, written on the left page of the manuscript. The text is dense and fills most of the page.

Handwritten text in cursive script, likely a letter or document, written on the left page of an open book. The text is dense and fills most of the page.

Handwritten text in cursive script, likely a letter or document, written on the right page of an open book. The text is dense and fills most of the page.

Handwritten text in cursive script, likely a letter or document, written on the right page of the manuscript. The text is dense and fills most of the page.

Handwritten text in cursive script, likely a letter or document, written on the left page of the manuscript. The text is dense and fills most of the page.

Handwritten text in cursive script, likely a letter or document, written on the left page of the manuscript. The text is dense and fills most of the page.

Handwritten text in cursive script, likely a letter or document, written on the right page of the manuscript. The text is dense and fills most of the page.

Handwritten text in a cursive script, likely a letter or a page from a manuscript. The text is written in a fluid, connected style across approximately 12 lines.

Handwritten text in a cursive script, continuing from the previous page. The text is written in a fluid, connected style across approximately 12 lines.

Handwritten text in a cursive script, likely a letter or document, spanning the left page of the manuscript. The text is written in dark ink on aged, yellowish paper. It consists of approximately 12 lines of text, starting with a large initial letter that appears to be 'S'. The script is highly stylized and fluid, characteristic of the 17th or 18th century.

Handwritten text in a cursive script, likely a letter or document, spanning the right page of the manuscript. The text is written in dark ink on aged, yellowish paper. It consists of approximately 12 lines of text, continuing from the left page. The script is highly stylized and fluid, characteristic of the 17th or 18th century.

Handwritten text in a cursive script, likely a letter or document, written on the left page of an open book. The text is arranged in approximately 12 horizontal lines, flowing from right to left across the page. The ink is dark and the paper shows signs of age and wear.

Handwritten text in a cursive script, likely a letter or document, written on the right page of an open book. The text is arranged in approximately 12 horizontal lines, flowing from right to left across the page. The ink is dark and the paper shows signs of age and wear.

Handwritten text in a cursive script, likely a letter or document, written on the left page of an open manuscript. The text is arranged in approximately 12 horizontal lines, flowing from right to left across the page. The ink is dark and the handwriting is fluid and connected.

Handwritten text in a cursive script, likely a letter or document, written on the right page of an open manuscript. The text is arranged in approximately 12 horizontal lines, flowing from right to left across the page. The ink is dark and the handwriting is fluid and connected.

Handwritten text in cursive script, spanning across the gutter. The text is dense and appears to be a continuous passage of prose or poetry. The ink is dark and the script is fluid, with many loops and flourishes.

Handwritten text in cursive script, continuing from the previous page. The text is dense and appears to be a continuous passage of prose or poetry. The ink is dark and the script is fluid, with many loops and flourishes.

Handwritten text in a cursive script, likely a letter or document, written on the left page of an open manuscript. The text is dense and fills most of the page.

Handwritten text in a cursive script, likely a letter or document, written on the right page of an open manuscript. The text is dense and fills most of the page.

Handwritten text in cursive script, likely a letter or document, written on the left page of the manuscript. The text is dense and fills most of the page.

Handwritten text in cursive script, likely a letter or document, written on the right page of the manuscript. The text is dense and fills most of the page.

Handwritten text in Arabic script, consisting of approximately 14 lines of dense cursive writing.



Handwritten text in Arabic script, continuing from the previous page. It includes several lines of dense cursive writing, with some characters appearing to be in a different script or dialect, possibly indicating a specific section or a change in the text's content.

Handwritten text in a cursive script, likely a historical document or letter, spanning the left page of the manuscript.

Handwritten text in a cursive script, likely a historical document or letter, spanning the right page of the manuscript.

Handwritten text in a cursive script, likely a letter or a page from a manuscript. The text is written in a fluid, connected style across approximately 12 lines.

Handwritten text in a cursive script, continuing from the previous page. The text is written in a fluid, connected style across approximately 12 lines.

Handwritten text in a cursive script, likely a letter or a page from a manuscript. The text is written in a fluid, connected style across approximately 15 lines.

Handwritten text in a cursive script, continuing from the previous page. The text is written in a fluid, connected style across approximately 15 lines.

Handwritten text in a cursive script, likely a form of shorthand or a specific dialect. The text is arranged in approximately 12 horizontal lines across the page.

Handwritten text in a cursive script, likely a form of shorthand or a specific dialect. The text is arranged in approximately 12 horizontal lines across the page.

Handwritten text in a cursive script, likely a letter or a page from a manuscript. The text is written in a fluid, connected style across approximately 12 lines.

Handwritten text in a cursive script, likely a letter or a page from a manuscript. The text is written in a fluid, connected style across approximately 12 lines. The word "推光" is visible in the middle of the page.

Handwritten text in a cursive script, likely a historical document or letter. The text is written in a dark ink on aged, yellowish paper. It consists of approximately 15 lines of text, starting with a large initial letter 'A' and ending with a period. The script is highly stylized and difficult to decipher without a key.

Handwritten text in a cursive script, likely a historical document or letter. The text is written in a dark ink on aged, yellowish paper. It consists of approximately 15 lines of text, starting with a large initial letter 'A' and ending with a period. The script is highly stylized and difficult to decipher without a key.

Handwritten text in a cursive script, likely a historical document or manuscript, spanning two pages. The text is written in dark ink on aged, yellowish paper. The script is highly stylized and difficult to decipher without a key. The text is arranged in approximately 15 lines per page, with some lines starting with a large initial letter. The overall appearance is that of a formal or official document from the 17th or 18th century.

Handwritten text in cursive script, likely a letter or document, written on the left page of an open book. The text is dense and fills most of the page.

Handwritten text in cursive script, likely a letter or document, written on the right page of an open book. The text is dense and fills most of the page.

Handwritten text in Arabic script, consisting of approximately 12 lines of dense, cursive writing.

Handwritten text in Arabic script, consisting of approximately 12 lines of dense, cursive writing.

Handwritten text in a cursive script, likely a historical document or manuscript. The text is written in a dark ink on aged, yellowish paper. It consists of approximately 12 lines of text, starting with a large initial letter 'D' and ending with a period. The script is highly stylized and difficult to decipher without a key.

Handwritten text in a cursive script, likely a historical document or manuscript. The text is written in a dark ink on aged, yellowish paper. It consists of approximately 12 lines of text, starting with a large initial letter 'D' and ending with a period. The script is highly stylized and difficult to decipher without a key.

Handwritten text in a cursive script, likely a historical document or letter, written on the left page of an open manuscript. The text is arranged in approximately 12 horizontal lines, flowing from right to left across the page. The ink is dark, and the script is highly stylized and interconnected.

Handwritten text in a cursive script, likely a historical document or letter, written on the right page of an open manuscript. The text is arranged in approximately 12 horizontal lines, flowing from right to left across the page. The ink is dark, and the script is highly stylized and interconnected.

Handwritten text in a cursive script, likely a historical document or letter, written on the left page of an open manuscript. The text is arranged in approximately 12 horizontal lines, flowing from right to left across the page. The ink is dark and the script is highly stylized and continuous.

Handwritten text in a cursive script, likely a historical document or letter, written on the right page of an open manuscript. The text is arranged in approximately 12 horizontal lines, flowing from right to left across the page. The ink is dark and the script is highly stylized and continuous.

Handwritten text in a cursive script, likely a historical document or manuscript. The text is written in a dark ink on aged, yellowish paper. It consists of approximately 12 lines of text, starting with a large initial letter 'S'.

Handwritten text in a cursive script, likely a historical document or manuscript. The text is written in a dark ink on aged, yellowish paper. It consists of approximately 12 lines of text, starting with a large initial letter 'S'.

Handwritten text in a cursive script, likely a letter or a page from a manuscript. The text is written in a fluid, connected style across approximately 12 lines.

Handwritten text in a cursive script, continuing from the previous page. The text is written in a fluid, connected style across approximately 12 lines.

Handwritten text in a cursive script, likely a letter or document, written on the left page of an open book. The text is arranged in approximately 12 horizontal lines, flowing from right to left across the page. The ink is dark, and the paper shows signs of age and wear.

Handwritten text in a cursive script, likely a letter or document, written on the right page of an open book. The text is arranged in approximately 12 horizontal lines, flowing from right to left across the page. The ink is dark, and the paper shows signs of age and wear.

Handwritten text in a cursive script, likely a personal letter or diary entry. The text is written in a fluid, connected style across approximately 12 lines.

Handwritten text in a cursive script, continuing from the previous page. The text is written in a fluid, connected style across approximately 12 lines.

Handwritten text in cursive script, likely a letter or document, written on the right page of an open book. The text is dense and fills most of the page.

Handwritten text in cursive script, likely a letter or document, written on the left page of an open book. The text is dense and fills most of the page.

Handwritten text in cursive script, likely a letter or document, written on the right page of the open book. The text is dense and fills most of the page.

Handwritten text in cursive script, likely a letter or document, written on the left page of the open book. The text is dense and fills most of the page.

Handwritten text in a cursive script, likely a form of Urdu or Persian, consisting of approximately 12 lines of text.

Handwritten text in a cursive script, likely a form of Urdu or Persian, consisting of approximately 12 lines of text.

Handwritten text in a cursive script, likely a form of Urdu or Persian, consisting of approximately 12 lines of text.

Handwritten text in a cursive script, likely a form of Urdu or Persian, consisting of approximately 12 lines of text.

Handwritten text in a cursive script, likely a historical document or letter. The text is written in dark ink on aged, yellowish paper. It consists of approximately 14 lines of text, starting with a large initial letter 'A' and ending with a period. The script is highly stylized and characteristic of the 17th or 18th century.

Handwritten text in a cursive script, likely a historical document or letter. The text is written in dark ink on aged, yellowish paper. It consists of approximately 14 lines of text, starting with a large initial letter 'A' and ending with a period. The script is highly stylized and characteristic of the 17th or 18th century.

Handwritten text in a cursive script, likely a historical document or letter, spanning the left page of the manuscript.

Handwritten text in a cursive script, likely a historical document or letter, spanning the right page of the manuscript.

Handwritten text in cursive script, likely a letter or document, written on the left page of an open manuscript. The text is dense and fills most of the page.

Handwritten text in cursive script, likely a letter or document, written on the right page of an open manuscript. The text is dense and fills most of the page.

Handwritten text in a cursive script, likely a letter or a page from a manuscript. The text is written in a fluid, connected style across approximately 12 lines.

Handwritten text in a cursive script, continuing from the previous page. The text is written in a fluid, connected style across approximately 12 lines.

Handwritten text in cursive script, likely a letter or document, written on the left page of an open manuscript. The text is dense and fills most of the page.

Handwritten text in cursive script, likely a letter or document, written on the right page of an open manuscript. The text is dense and fills most of the page.

Handwritten text at the top of the page.

Main body of handwritten text on the right page, consisting of several lines of cursive script.

Main body of handwritten text on the left page, consisting of several lines of cursive script.

Handwritten text in a cursive script, likely a letter or a page from a manuscript. The text is written in a fluid, connected style across approximately 12 lines.

Handwritten text in a cursive script, continuing from the previous page. The text is written in a fluid, connected style across approximately 12 lines.

Handwritten text in a cursive script, likely a historical document or letter. The text is written in a dark ink on aged, yellowish paper. It consists of approximately 12 lines of text, starting with a large initial letter 'K' and ending with a small flourish.

Handwritten text in a cursive script, likely a historical document or letter. The text is written in a dark ink on aged, yellowish paper. It consists of approximately 12 lines of text, starting with a large initial letter 'K' and ending with a small flourish.

Handwritten text in a cursive script, likely a letter or a page from a manuscript. The text is written in a fluid, connected style across approximately 12 lines.

Handwritten text in a cursive script, likely a letter or a page from a manuscript. The text is written in a fluid, connected style across approximately 12 lines.

りんごの皮は、よく洗って、
 お湯で煮ると、お茶のように
 飲むことができます。これは、
 胃腸の働きを助ける効果が
 あります。また、りんごの皮
 を乾燥させて、お湯で煮ると、
 お茶のように飲むこともでき
 ます。これは、胃腸の働きを
 助ける効果があります。また、
 りんごの皮を乾燥させて、お湯
 で煮ると、お茶のように飲む
 ことができます。これは、胃腸の
 働きを助ける効果があります。

りんごの皮の効果

りんごの皮は、よく洗って、
 お湯で煮ると、お茶のように
 飲むことができます。これは、
 胃腸の働きを助ける効果が
 あります。また、りんごの皮
 を乾燥させて、お湯で煮ると、
 お茶のように飲むこともでき
 ます。これは、胃腸の働きを
 助ける効果があります。また、
 りんごの皮を乾燥させて、お湯
 で煮ると、お茶のように飲む
 ことができます。これは、胃腸の
 働きを助ける効果があります。

Handwritten text in cursive script, likely a letter or document, written on aged paper. The text is arranged in several lines, starting from the top right and moving downwards. The ink is dark, and the paper shows signs of age and wear.

Franklin

in the

