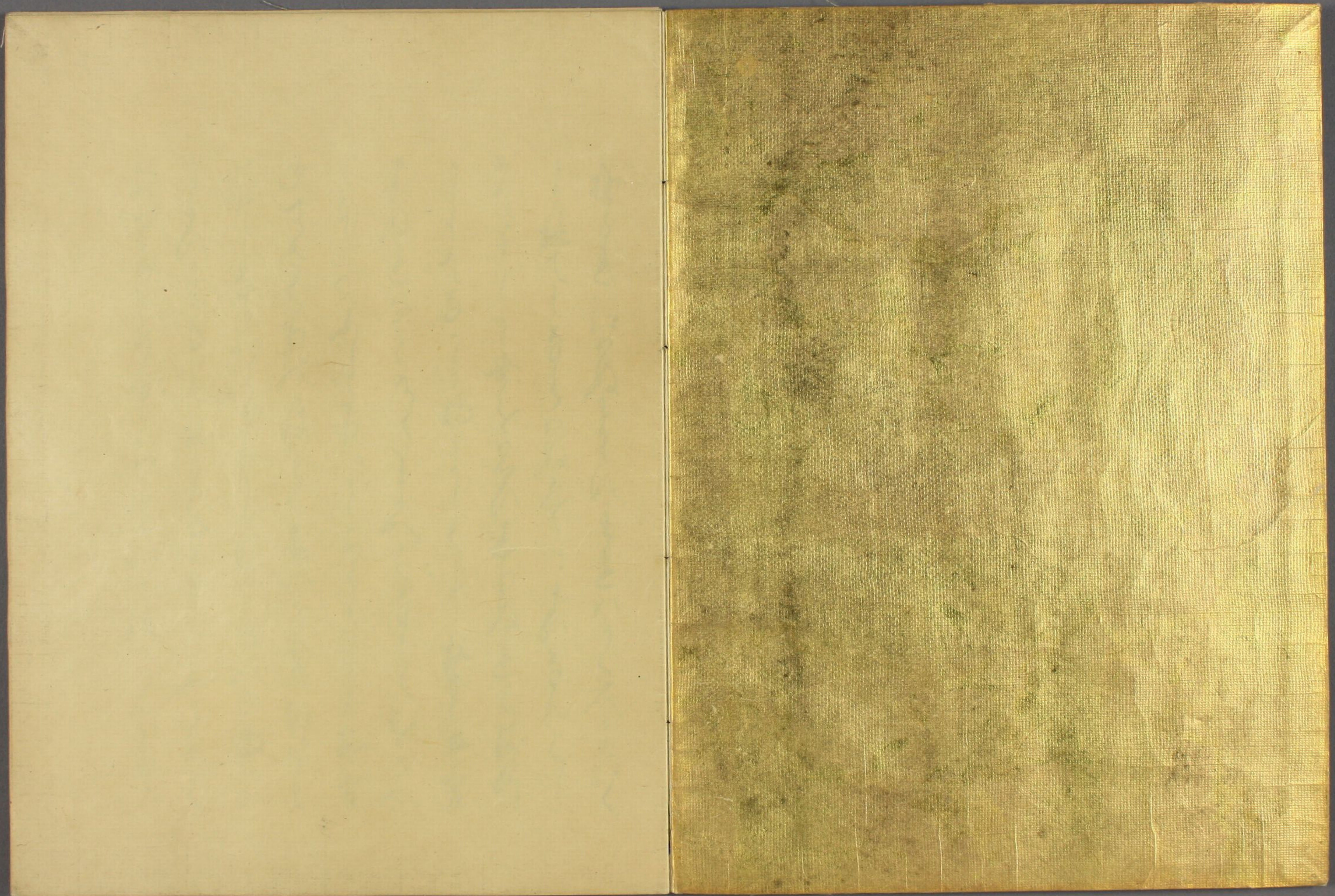




いん

特別  
~ 2  
4867  
51 (3)







Handwritten text in a cursive script, likely a historical document or manuscript. The text is written in a fluid, connected style across approximately 12 lines.

Handwritten text in a cursive script, likely a historical document or manuscript. The text is written in a fluid, connected style across approximately 12 lines.

Handwritten text in cursive script, likely a letter or document, written on the right page of the manuscript. The text is dense and fills most of the page.

Handwritten text in cursive script, likely a letter or document, written on the left page of the manuscript. The text is dense and fills most of the page.

Handwritten text in a cursive script, likely a historical document or letter, written on the left page of an open manuscript. The text is arranged in approximately 12 horizontal lines, starting from the top left and moving towards the bottom right. The ink is dark, and the paper shows signs of age and wear.

Handwritten text in a cursive script, likely a historical document or letter, written on the right page of an open manuscript. The text is arranged in approximately 12 horizontal lines, starting from the top left and moving towards the bottom right. The ink is dark, and the paper shows signs of age and wear.

Handwritten text in a cursive script, likely a historical document or letter, spanning the right page of the manuscript.

Handwritten text in a cursive script, likely a historical document or letter, spanning the left page of the manuscript.

Handwritten text in a cursive script, likely a historical document or letter, spanning the left page.

Handwritten text in a cursive script, likely a historical document or letter, spanning the right page.



Handwritten text in a cursive script, likely a historical document or letter. The text is written in a dark ink on aged, yellowish paper. It consists of approximately 15 lines of text, starting with a large initial letter 'S' and ending with a period. The script is highly stylized and difficult to decipher without a key.

Handwritten text in a cursive script, likely a historical document or letter. The text is written in a dark ink on aged, yellowish paper. It consists of approximately 15 lines of text, starting with a large initial letter 'S' and ending with a period. The script is highly stylized and difficult to decipher without a key.



Handwritten text in a cursive script, likely a historical document or letter, written on the left page of an open manuscript. The text is arranged in approximately 12 horizontal lines, flowing from right to left across the page. The ink is dark and the script is highly stylized and interconnected.

Handwritten text in a cursive script, likely a historical document or letter, written on the right page of an open manuscript. The text is arranged in approximately 12 horizontal lines, flowing from right to left across the page. The ink is dark and the script is highly stylized and interconnected.

Handwritten text in a cursive script, likely a historical document or letter. The text is written in a dark ink on aged, yellowish paper. It consists of approximately 12 lines of text, starting with a large initial letter 'A' and ending with a flourish. The script is highly stylized and difficult to decipher without a key.

Handwritten text in a cursive script, continuing from the previous page. It consists of approximately 12 lines of text, starting with a large initial letter 'A' and ending with a flourish. The script is highly stylized and difficult to decipher without a key.

Handwritten text in a cursive script, likely a letter or document, written on the left page of an open manuscript. The text is arranged in approximately 12 horizontal lines, flowing from right to left across the page. The ink is dark and the script is highly stylized and connected.

Handwritten text in a cursive script, likely a letter or document, written on the right page of an open manuscript. The text is arranged in approximately 12 horizontal lines, flowing from right to left across the page. The ink is dark and the script is highly stylized and connected.

Handwritten text in cursive script, likely a letter or document, written on the left page of an open manuscript. The text is dense and fills most of the page.

Handwritten text in cursive script, likely a letter or document, written on the right page of an open manuscript. The text is dense and fills most of the page.

Handwritten text in a cursive script, likely a historical document or manuscript. The text is written in a dark ink on aged, yellowish paper. It consists of approximately 12 lines of text, starting with a large initial letter 'D' and ending with a period. The script is highly stylized and difficult to decipher without a key.

Handwritten text in a cursive script, likely a historical document or manuscript. The text is written in a dark ink on aged, yellowish paper. It consists of approximately 12 lines of text, starting with a large initial letter 'D' and ending with a period. The script is highly stylized and difficult to decipher without a key.

Handwritten text in a cursive script, likely a letter or a page from a manuscript. The text is written in dark ink on aged, yellowish paper. It consists of approximately 15 lines of text, starting with a large initial letter 'D' and ending with a flourish. The script is highly stylized and difficult to decipher without a key.

Handwritten text in a cursive script, likely a letter or a page from a manuscript. The text is written in dark ink on aged, yellowish paper. It consists of approximately 15 lines of text, starting with a large initial letter 'D' and ending with a flourish. The script is highly stylized and difficult to decipher without a key.



Handwritten text in a cursive script, likely a letter or a page from a manuscript. The text is written in a fluid, connected style across approximately 12 lines.

Handwritten text in a cursive script, continuing from the previous page. The text is written in a fluid, connected style across approximately 12 lines.

Handwritten text in a cursive script, likely a historical document or letter. The text is written in a dark ink on aged, yellowish paper. It consists of approximately 12 lines of text, starting with a large initial letter 'K' and ending with a period. The script is highly stylized and characteristic of the early modern period.

Handwritten text in a cursive script, likely a historical document or letter. The text is written in a dark ink on aged, yellowish paper. It consists of approximately 12 lines of text, starting with a large initial letter 'K' and ending with a period. The script is highly stylized and characteristic of the early modern period.

~~~~~

~~~~~

~~~~~

~~~~~

~~~~~

~~~~~

~~~~~

~~~~~

~~~~~

~~~~~

~~~~~

~~~~~

~~~~~

~~~~~

~~~~~

~~~~~

~~~~~

~~~~~

~~~~~

~~~~~

Handwritten text in a cursive script, likely a historical document or manuscript. The text is written in a dark ink on aged, yellowish paper. It consists of approximately 12 lines of text, starting with a large initial letter 'A' and ending with a period. The script is highly stylized and difficult to decipher without a key.

Handwritten text in a cursive script, likely a historical document or manuscript. The text is written in a dark ink on aged, yellowish paper. It consists of approximately 12 lines of text, starting with a large initial letter 'A' and ending with a period. The script is highly stylized and difficult to decipher without a key.

Handwritten text in a cursive script, likely a historical document or letter. The text is written in a dark ink on aged, yellowish paper. It consists of approximately 12 lines of text, starting with a large initial letter 'S' and ending with a period. The script is highly stylized and characteristic of the 17th or 18th century.

Handwritten text in a cursive script, likely a historical document or letter. The text is written in a dark ink on aged, yellowish paper. It consists of approximately 12 lines of text, starting with a large initial letter 'S' and ending with a period. The script is highly stylized and characteristic of the 17th or 18th century.

Handwritten text in a cursive script, likely a historical document or manuscript. The text is written in a dark ink on aged, yellowish paper. It consists of approximately 15 lines of text, starting with a large initial letter 'F'. The script is highly stylized and difficult to decipher without a key.

Handwritten text in a cursive script, likely a historical document or manuscript. The text is written in a dark ink on aged, yellowish paper. It consists of approximately 15 lines of text, starting with a large initial letter 'F'. The script is highly stylized and difficult to decipher without a key.

Handwritten text in a cursive script, likely a form of Urdu or Persian, consisting of approximately 12 lines of text.

Handwritten text in a cursive script, likely a form of Urdu or Persian, consisting of approximately 12 lines of text.

Handwritten text in a cursive script, likely a letter or document, written on the left page of an open book. The text is arranged in approximately 12 horizontal lines, flowing from right to left across the page.

Handwritten text in a cursive script, likely a letter or document, written on the right page of an open book. The text is arranged in approximately 12 horizontal lines, flowing from right to left across the page.



Handwritten text in cursive script, likely a list or account. The text is written in dark ink on aged paper. It begins with a large initial 'S' and continues with several lines of text, including the word 'Sublime'.

Handwritten text in cursive script, continuing the list or account from the previous page. It begins with a large initial 'S' and continues with several lines of text, including the word 'Sublime'.

Handwritten text in a cursive script, likely a letter or a page from a manuscript. The text is written in a fluid, connected style across approximately 12 lines.

Handwritten text in a cursive script, continuing from the previous page. The text is written in a fluid, connected style across approximately 12 lines.





Handwritten text in a cursive script, likely a historical document or manuscript. The text is written in black ink on aged, yellowish paper. It consists of approximately 15 lines of text, starting from the top left and moving downwards. The script is highly stylized and difficult to decipher without a key.



Handwritten text in a cursive script, continuing from the previous page. The text is written in black ink on aged, yellowish paper. It consists of approximately 15 lines of text, starting from the top left and moving downwards. The script is highly stylized and difficult to decipher without a key.

Handwritten text in a cursive script, likely Persian or Urdu, written on the left page of an open manuscript. The text is arranged in approximately 12 horizontal lines, flowing from right to left. The ink is dark and the script is highly stylized and fluid.

Handwritten text in a cursive script, likely Persian or Urdu, written on the right page of an open manuscript. The text is arranged in approximately 12 horizontal lines, flowing from right to left. The ink is dark and the script is highly stylized and fluid.

Handwritten text in Arabic script, likely a religious or historical document. The text is arranged in approximately 14 horizontal lines, starting from the right side of the page and moving towards the left. The script is a cursive style, and the paper shows signs of age and wear.

Handwritten text in Arabic script, continuing from the previous page. The text is arranged in approximately 14 horizontal lines, starting from the right side of the page and moving towards the left. The script is a cursive style, and the paper shows signs of age and wear.

Handwritten text in a cursive script, oriented vertically on the right page of the manuscript. The text is written in dark ink on aged, yellowish paper. It appears to be a list or a series of entries, possibly names or titles, written in a highly stylized, flowing hand. The text is arranged in two columns, with the right column being slightly longer than the left. The characters are closely spaced and often feature decorative flourishes.



