

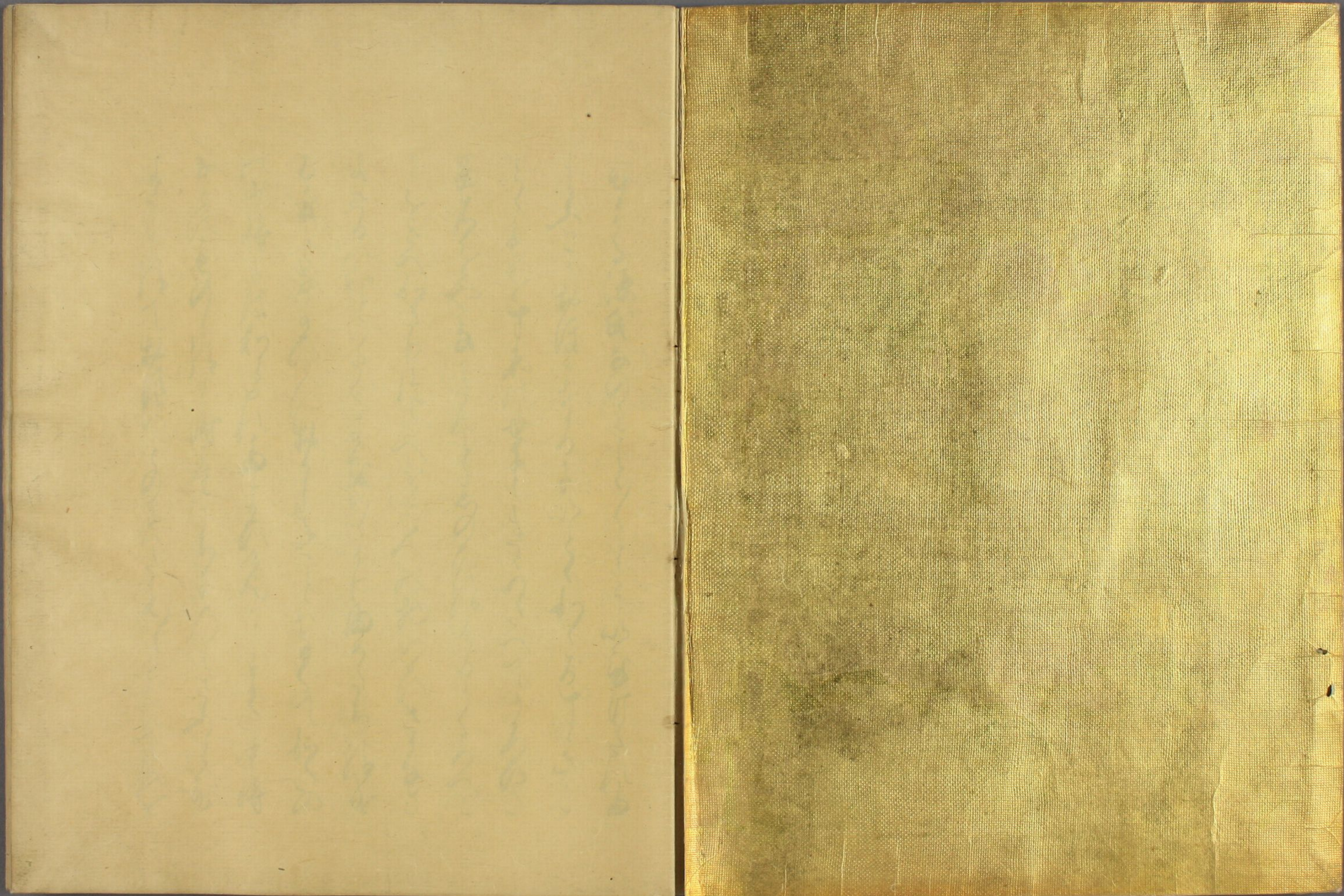


古今

特別  
~ 2  
4867  
51(2)









此紙に書かれたるは、  
 藤原公成の御書なり。  
 公成は、桓平親王の御孫なり。  
 公成は、御書に「藤原公成」と御書せり。  
 公成は、御書に「藤原公成」と御書せり。  
 公成は、御書に「藤原公成」と御書せり。  
 公成は、御書に「藤原公成」と御書せり。  
 公成は、御書に「藤原公成」と御書せり。  
 公成は、御書に「藤原公成」と御書せり。  
 公成は、御書に「藤原公成」と御書せり。  
 公成は、御書に「藤原公成」と御書せり。  
 公成は、御書に「藤原公成」と御書せり。





Handwritten text in a cursive script, likely a historical document or letter, spanning the left page.

Handwritten text in a cursive script, likely a historical document or letter, spanning the right page.



Handwritten text in a cursive script, likely a letter or a page from a manuscript. The text is written in dark ink on aged, yellowish paper. It consists of approximately 12 lines of text, starting with a small decorative flourish at the top left. The script is highly stylized and difficult to decipher without a key.

Handwritten text in a cursive script, continuing from the previous page. It consists of approximately 12 lines of text, starting with a small decorative flourish at the top left. The script is highly stylized and difficult to decipher without a key.



Handwritten text in a cursive script, likely a historical document or letter, spanning the left page of the manuscript.

Handwritten text in a cursive script, likely a historical document or letter, spanning the right page of the manuscript.



Handwritten text in a cursive script, likely a historical document or letter. The text is written in a dark ink on aged, yellowish paper. It consists of approximately 15 lines of text, starting with a large initial letter 'S' and ending with a flourish.

Handwritten text in a cursive script, likely a historical document or letter. The text is written in a dark ink on aged, yellowish paper. It consists of approximately 15 lines of text, starting with a large initial letter 'S' and ending with a flourish.



Handwritten text in cursive script, likely a letter or document, written on the left page of an open manuscript. The text is dense and fills most of the page.

Handwritten text in cursive script, likely a letter or document, written on the right page of an open manuscript. The text is dense and fills most of the page.



Handwritten text in a cursive script, likely a musical score or a list of notes, spanning the left page of the manuscript.

Handwritten text in a cursive script, likely a musical score or a list of notes, spanning the right page of the manuscript.



Handwritten text in a cursive script, likely a list or account, consisting of approximately 14 lines of text.



Handwritten text in a cursive script, continuing from the previous page, consisting of approximately 14 lines of text.



Handwritten text in a cursive script, likely a historical document or manuscript. The text is written in a dark ink on aged, yellowish paper. It consists of approximately 12 lines of text, starting with a large initial letter 'D' and ending with a period. The script is highly stylized and difficult to decipher without a key.

Handwritten text in a cursive script, likely a historical document or manuscript. The text is written in a dark ink on aged, yellowish paper. It consists of approximately 12 lines of text, starting with a large initial letter 'D' and ending with a period. The script is highly stylized and difficult to decipher without a key.



Handwritten text in a cursive script, likely a historical document or manuscript. The text is written in a dark ink on aged, yellowish paper. It consists of approximately 12 lines of text, starting with a large initial letter 'S' and ending with a period. The script is highly stylized and characteristic of the 17th or 18th century.

Handwritten text in a cursive script, likely a historical document or manuscript. The text is written in a dark ink on aged, yellowish paper. It consists of approximately 12 lines of text, starting with a large initial letter 'S' and ending with a period. The script is highly stylized and characteristic of the 17th or 18th century.



Handwritten text in a cursive script, likely a historical document or letter, spanning the left page of the manuscript.

Handwritten text in a cursive script, likely a historical document or letter, spanning the right page of the manuscript.



Handwritten text in a cursive script, likely a historical document or manuscript. The text is written in a dark ink on aged, yellowish paper. It consists of approximately 12 lines of text, starting with a large initial letter 'S' and ending with a period. The script is highly stylized and difficult to decipher without a key.

Handwritten text in a cursive script, likely a historical document or manuscript. The text is written in a dark ink on aged, yellowish paper. It consists of approximately 12 lines of text, starting with a large initial letter 'S' and ending with a period. The script is highly stylized and difficult to decipher without a key.



Handwritten text in a cursive script, likely a historical document or letter. The text is written in a dark ink on aged, yellowish paper. It consists of approximately 12 lines of text, starting with a large initial letter 'S' and ending with a flourish. The script is highly stylized and characteristic of the early modern period.

Handwritten text in a cursive script, likely a historical document or letter. The text is written in a dark ink on aged, yellowish paper. It consists of approximately 12 lines of text, starting with a large initial letter 'S' and ending with a flourish. The script is highly stylized and characteristic of the early modern period.



Handwritten text in cursive script, likely a letter or document, written on the left page of an open manuscript. The text is dense and fills most of the page.

Handwritten text in cursive script, likely a letter or document, written on the right page of an open manuscript. The text is dense and fills most of the page.



Handwritten text in a cursive script, likely a musical score or a form of shorthand, consisting of approximately 12 lines of notation.

Handwritten text in a cursive script, likely a musical score or a form of shorthand, consisting of approximately 12 lines of notation.



Handwritten text in a cursive script, likely a historical document or letter, written on the left page of an open manuscript. The text is arranged in approximately 12 horizontal lines, flowing from right to left across the page. The ink is dark and the script is highly stylized and interconnected.

Handwritten text in a cursive script, likely a historical document or letter, written on the right page of an open manuscript. The text is arranged in approximately 12 horizontal lines, flowing from right to left across the page. The ink is dark and the script is highly stylized and interconnected.







Handwritten text in a cursive script, likely a letter or a page from a manuscript. The text is written in a fluid, connected style across approximately 12 lines.

Handwritten text in a cursive script, likely a letter or a page from a manuscript. The text is written in a fluid, connected style across approximately 12 lines.



Handwritten text in a cursive script, likely a letter or a page from a manuscript. The text is written in a fluid, connected style across approximately 12 lines.

Handwritten text in a cursive script, continuing from the previous page. The text is written in a fluid, connected style across approximately 12 lines.



Handwritten text in cursive script, likely a list or account, spanning the left page of the manuscript. The text is written in a fluid, connected style with various flourishes and loops.

Handwritten text in cursive script, continuing from the left page, spanning the right page of the manuscript. The text maintains the same fluid, connected style with various flourishes and loops.



Handwritten text in a cursive script, likely a historical document or letter. The text is written in a dark ink on aged, yellowish paper. It consists of approximately 12 lines of text, starting with a large initial letter 'S' and ending with a period. The script is highly stylized and characteristic of the 17th or 18th century.

Handwritten text in a cursive script, likely a historical document or letter. The text is written in a dark ink on aged, yellowish paper. It consists of approximately 12 lines of text, starting with a large initial letter 'S' and ending with a period. The script is highly stylized and characteristic of the 17th or 18th century.



Handwritten text in cursive script, likely a letter or document, written on the left page of an open notebook. The text is dense and fills most of the page.

Handwritten text in cursive script, likely a letter or document, written on the right page of an open notebook. The text is dense and fills most of the page.



Handwritten text in a cursive script, likely a personal letter or diary entry. The text is written in a fluid, connected style across approximately 12 lines.

Handwritten text in a cursive script, continuing from the previous page. The text is written in a fluid, connected style across approximately 12 lines.



Handwritten text in a cursive script, likely a form of shorthand or a specific dialect. The text is arranged in approximately 12 horizontal lines across the page.

Handwritten text in a cursive script, likely a form of shorthand or a specific dialect. The text is arranged in approximately 12 horizontal lines across the page.



Handwritten text in a cursive script, likely a historical document or letter. The text is written in a dark ink on aged, yellowish paper. It consists of approximately 12 lines of text, starting with a large initial letter 'S' and ending with a period. The script is highly stylized and characteristic of the early modern period.

Handwritten text in a cursive script, likely a historical document or letter. The text is written in a dark ink on aged, yellowish paper. It consists of approximately 12 lines of text, starting with a large initial letter 'S' and ending with a period. The script is highly stylized and characteristic of the early modern period.



Handwritten text in a cursive script, likely a letter or document, written on the left page of an open book. The text is arranged in approximately 12 horizontal lines, flowing from right to left across the page. The ink is dark, and the paper shows signs of age and wear.



Handwritten text in a cursive script, likely a letter or document, written on the right page of an open book. The text is arranged in approximately 12 horizontal lines, flowing from right to left across the page. The ink is dark, and the paper shows signs of age and wear.



Handwritten text in a cursive script, likely a letter or a page from a manuscript. The text is written in a dark ink on aged, yellowish paper. The script is highly stylized and difficult to decipher, but it appears to be a continuous block of text. The lines are somewhat irregular, suggesting a handwritten style. The text is arranged in approximately 12 horizontal lines across the page.

Handwritten text in a cursive script, continuing from the previous page. The text is written in a dark ink on aged, yellowish paper. The script is highly stylized and difficult to decipher, but it appears to be a continuous block of text. The lines are somewhat irregular, suggesting a handwritten style. The text is arranged in approximately 12 horizontal lines across the page.



Handwritten text in cursive script, likely a letter or document, written on the left page of an open book. The text is dense and fills most of the page.

Handwritten text in cursive script, likely a letter or document, written on the right page of an open book. The text is dense and fills most of the page.



Handwritten text in a cursive script, likely a historical document or letter. The text is written in a dark ink on aged, yellowish paper. It consists of approximately 14 lines of text, starting with a large initial letter 'D' and ending with a flourish. The script is highly decorative and characteristic of the 17th or 18th century.

Handwritten text in a cursive script, continuing from the previous page. It consists of approximately 14 lines of text, starting with a large initial letter 'D' and ending with a flourish. The script is highly decorative and characteristic of the 17th or 18th century.



Handwritten text in a cursive script, likely a letter or a page from a manuscript. The text is written in a dark ink on aged, yellowish paper. The script is highly stylized and difficult to decipher, but it appears to be a continuous flow of characters. The text is arranged in approximately 12 horizontal lines across the page.

Handwritten text in a cursive script, continuing from the previous page. The text is written in a dark ink on aged, yellowish paper. The script is highly stylized and difficult to decipher, but it appears to be a continuous flow of characters. The text is arranged in approximately 12 horizontal lines across the page.



Handwritten text in Arabic script, consisting of approximately 12 lines of cursive script.

Handwritten text in Arabic script, consisting of approximately 12 lines of cursive script.



Handwritten text in a cursive script, likely a form of shorthand or a specific dialect. The text is written in dark ink on aged paper. The first line begins with the characters '吉祥' (Jíxiáng), which translates to 'Auspicious' or 'Good Fortune'. The rest of the text is a continuous flow of cursive characters, possibly representing a name or a specific phrase.

Handwritten text in a cursive script, continuing from the previous page. The text is written in dark ink on aged paper. It appears to be a continuation of the same text or a separate entry, maintaining the same cursive style.



Handwritten text in a cursive script, likely a personal letter or diary entry, covering the left page of the manuscript. The text is written in dark ink on aged, yellowish paper.

Handwritten text in a cursive script, likely a personal letter or diary entry, covering the right page of the manuscript. The text is written in dark ink on aged, yellowish paper.



Handwritten text in a cursive script, likely a form of shorthand or a specific dialect. The text is arranged in approximately 12 horizontal lines across the page.

Handwritten text in a cursive script, continuing from the previous page. The text is arranged in approximately 12 horizontal lines across the page.



Handwritten text in a cursive script, likely a personal letter or diary entry, starting with a large initial letter.

Handwritten text in a cursive script, continuing the narrative or message from the previous section.

Handwritten text in a cursive script, occupying the right-hand page of the manuscript.



Handwritten text in a cursive script, likely a letter or document, spanning the left page.

Handwritten text in a cursive script, likely a letter or document, spanning the right page.



Handwritten text in a cursive script, likely a letter or a page from a manuscript. The text is written in dark ink on aged, yellowish paper. It consists of approximately 15 lines of text, starting with a large initial letter 'S' and ending with a period. The script is highly stylized and difficult to decipher without a key.

Handwritten text in a cursive script, continuing from the previous page. It consists of approximately 15 lines of text, starting with a large initial letter 'S' and ending with a period. The script is highly stylized and difficult to decipher without a key.



Handwritten text in a cursive script, likely a letter or a page from a manuscript. The text is written in dark ink on aged, yellowish paper. It consists of approximately 12 lines of text, starting with a large initial letter 'D' and ending with a flourish. The script is highly decorative and characteristic of the 17th or 18th century.

Handwritten text in a cursive script, likely a letter or a page from a manuscript. The text is written in dark ink on aged, yellowish paper. It consists of approximately 12 lines of text, starting with a large initial letter 'D' and ending with a flourish. The script is highly decorative and characteristic of the 17th or 18th century.



Handwritten text in a cursive script, likely a letter or a page from a manuscript. The text is written in dark ink on aged, yellowish paper. It consists of approximately 12 lines of text, starting with a large initial letter 'D'. The script is highly stylized and characteristic of the 17th or 18th century.

Handwritten text in a cursive script, continuing from the previous page. It consists of approximately 12 lines of text, starting with a large initial letter 'E'. The script is highly stylized and characteristic of the 17th or 18th century.



Handwritten text in a cursive script, likely a historical document or letter, spanning the left page of the manuscript.

Handwritten text in a cursive script, likely a historical document or letter, spanning the right page of the manuscript.



Handwritten text in a cursive script, likely a letter or a page from a manuscript. The text is written in black ink on aged paper. The script is highly stylized and difficult to decipher. The text is arranged in approximately 15 lines, with some lines starting with a small red mark or flourish. The overall appearance is that of a personal or official document from the 17th or 18th century.



Handwritten text in a cursive script, continuing from the previous page. The text is written in black ink on aged paper. The script is highly stylized and difficult to decipher. The text is arranged in approximately 15 lines, with some lines starting with a small red mark or flourish. The overall appearance is that of a personal or official document from the 17th or 18th century.



Handwritten text in a cursive script, likely a letter or document, written on the left page of an open manuscript. The text is arranged in approximately 12 horizontal lines, flowing from right to left across the page. The ink is dark and the script is highly stylized and connected.

Handwritten text in a cursive script, likely a letter or document, written on the right page of an open manuscript. The text is arranged in approximately 12 horizontal lines, flowing from right to left across the page. The ink is dark and the script is highly stylized and connected.



Handwritten text in a cursive script, likely a personal letter or diary entry, spanning the left page of the manuscript.

Handwritten text in a cursive script, continuing from the left page, spanning the right page of the manuscript.



Handwritten text in a cursive script, likely a letter or a page from a manuscript. The text is written in dark ink on aged, yellowish paper. It consists of approximately 12 lines of text, starting with a large initial letter 'C' and ending with a flourish. The script is highly decorative and characteristic of the 17th or 18th century.

Handwritten text in a cursive script, continuing from the previous page. It consists of approximately 12 lines of text, starting with a large initial letter 'C' and ending with a flourish. The script is highly decorative and characteristic of the 17th or 18th century.



Handwritten text in a cursive script, likely a historical document or manuscript. The text is written in a dark ink on aged, yellowish paper. It consists of approximately 12 lines of text, starting with a large initial letter 'A' and ending with a period. The script is highly stylized and difficult to decipher without a key.

Handwritten text in a cursive script, likely a historical document or manuscript. The text is written in a dark ink on aged, yellowish paper. It consists of approximately 12 lines of text, starting with a large initial letter 'A' and ending with a period. The script is highly stylized and difficult to decipher without a key.



Handwritten text in Arabic script, consisting of approximately 12 lines of cursive script.

Handwritten text in Arabic script, consisting of approximately 12 lines of cursive script.



Handwritten text in a cursive script, likely Persian or Urdu, spanning the left page of the manuscript. The text is arranged in approximately 15 horizontal lines, written from right to left. The ink is dark and the script is highly fluid and connected.

Handwritten text in a cursive script, likely Persian or Urdu, spanning the right page of the manuscript. The text is arranged in approximately 15 horizontal lines, written from right to left. The ink is dark and the script is highly fluid and connected.



Handwritten text in a cursive script, likely a historical document or letter, spanning the left page of the manuscript.

Handwritten text in a cursive script, likely a historical document or letter, spanning the right page of the manuscript.



Handwritten text in a cursive script, likely a historical document or manuscript. The text is written in a dark ink on aged, yellowish paper. It consists of approximately 12 lines of text, starting with a large initial letter 'S' and ending with a period. The script is highly stylized and difficult to decipher without a key.

Handwritten text in a cursive script, likely a historical document or manuscript. The text is written in a dark ink on aged, yellowish paper. It consists of approximately 12 lines of text, starting with a large initial letter 'S' and ending with a period. The script is highly stylized and difficult to decipher without a key.



Handwritten text in a cursive script, likely a form of shorthand or a specific dialect. The text is arranged in approximately 12 horizontal lines across the page.

Handwritten text in a cursive script, continuing from the previous page. The text is arranged in approximately 12 horizontal lines across the page.



—

Handwritten text in cursive script, consisting of approximately 14 lines of text.

Handwritten text in cursive script, consisting of approximately 14 lines of text.



Handwritten text in cursive script, likely a letter or document, written on the left page of an open notebook. The text is dense and fills most of the page.

Handwritten text in cursive script, likely a letter or document, written on the right page of an open notebook. The text is dense and fills most of the page.



Handwritten text in a cursive script, likely a historical document or letter. The text is written in a dark ink on aged, yellowish paper. It consists of approximately 12 lines of text, starting with a large initial letter 'P' and ending with a signature or name. The script is highly stylized and characteristic of the 17th or 18th century.

Handwritten text in a cursive script, likely a historical document or letter. The text is written in a dark ink on aged, yellowish paper. It consists of approximately 12 lines of text, starting with a large initial letter 'P' and ending with a signature or name. The script is highly stylized and characteristic of the 17th or 18th century.



Handwritten text in a cursive script, likely a letter or document, written on the left page of an open manuscript. The text is arranged in approximately 15 horizontal lines, flowing from right to left across the page. The ink is dark, and the script is highly stylized and connected.



Handwritten text in a cursive script, likely a letter or document, written on the right page of an open manuscript. The text is arranged in approximately 15 horizontal lines, flowing from right to left across the page. The ink is dark, and the script is highly stylized and connected, matching the style on the left page.



Handwritten text in a cursive script, likely a historical document or letter, written on the left page of an open manuscript. The text is arranged in approximately 12 horizontal lines, starting from the top left and moving towards the bottom right. The ink is dark, and the paper shows signs of age and wear.

Handwritten text in a cursive script, likely a historical document or letter, written on the right page of an open manuscript. The text is arranged in approximately 12 horizontal lines, starting from the top left and moving towards the bottom right. The ink is dark, and the paper shows signs of age and wear.



Handwritten text in a cursive script, likely a historical document or letter. The text is written in a dark ink on aged, yellowish paper. It consists of approximately 12 lines of text, starting with a large initial letter 'D' and ending with a smaller, possibly concluding mark. The script is highly stylized and difficult to decipher without a key.

Handwritten text in a cursive script, continuing from the previous page. It consists of approximately 12 lines of text, starting with a large initial letter 'D' and ending with a smaller, possibly concluding mark. The script is highly stylized and difficult to decipher without a key.



Handwritten text in a cursive script, likely a letter or a page from a manuscript. The text is written in dark ink on aged, yellowish paper. It consists of approximately 12 lines of text, starting with a small mark resembling a checkmark or a stylized '1' at the top left. The script is highly fluid and characteristic of the 17th or 18th century.

Handwritten text in a cursive script, continuing from the previous page. It consists of approximately 12 lines of text, written in dark ink on aged, yellowish paper. The script is highly fluid and characteristic of the 17th or 18th century.



Handwritten text in a cursive script, likely a letter or a page from a manuscript. The text is written in a fluid, connected style across approximately 12 lines.

Handwritten text in a cursive script, continuing from the previous page. The text is written in a fluid, connected style across approximately 12 lines.



Handwritten text in a cursive script, likely a historical document or manuscript. The text is written in black ink on aged, yellowish paper. It consists of several lines of text, with some words appearing to be in a different script or dialect than the surrounding text. The text is arranged in a vertical column on the right side of the page.

Faint, ghostly handwritten text visible through the paper from the reverse side, appearing as light blue or green ink.



