



كتاب  
البرهان  
في  
الهندسة

特別  
~ 2  
4867  
51(1)



9  
145



Handwritten text in a cursive script, likely a letter or a personal note, written on the left page of the manuscript. The text is dense and fills most of the page.

Handwritten text in a cursive script, likely a letter or a personal note, written on the right page of the manuscript. The text is dense and fills most of the page.

Handwritten text in cursive script, likely a letter or document, written on the left page of an open manuscript. The text is dense and fills most of the page.

Handwritten text in cursive script, likely a letter or document, written on the right page of an open manuscript. The text is dense and fills most of the page.



一、  
二、  
三、  
四、  
五、  
六、  
七、  
八、  
九、  
十、  
十一、  
十二、  
十三、  
十四、  
十五、  
十六、  
十七、  
十八、  
十九、  
二十、

一、  
二、  
三、  
四、  
五、  
六、  
七、  
八、  
九、  
十、  
十一、  
十二、  
十三、  
十四、  
十五、  
十六、  
十七、  
十八、  
十九、  
二十、

Handwritten text in a cursive script, likely a form of Urdu or Persian, written on the left page of an open manuscript. The text is arranged in approximately 12 horizontal lines, flowing from right to left. The ink is dark and the script is highly stylized and connected.

Handwritten text in a cursive script, likely a form of Urdu or Persian, written on the right page of an open manuscript. The text is arranged in approximately 12 horizontal lines, flowing from right to left. The ink is dark and the script is highly stylized and connected.



بِسْمِ اللّٰهِ الرَّحْمٰنِ الرَّحِیْمِ  
الحمد لله رب العالمین  
والصلاة والسلام على  
سيدنا محمد وآله الطيبين  
الطاهرين اجمعين  
اللهم صل على  
سيدنا محمد وعلى  
آله وصحبه وسلم  
كصلی علی ابراہیم  
وآل ابراہیم الطيبين  
الطاهرين اجمعين  
اللهم صل على  
سيدنا محمد وعلى  
آله وصحبه وسلم  
كصلی علی ابراہیم  
وآل ابراہیم الطيبين  
الطاهرين اجمعين  
اللهم صل على  
سيدنا محمد وعلى  
آله وصحبه وسلم  
كصلی علی ابراہیم  
وآل ابراہیم الطيبين  
الطاهرين اجمعين

اللهم صل على  
سيدنا محمد وعلى  
آله وصحبه وسلم  
كصلی علی ابراہیم  
وآل ابراہیم الطيبين  
الطاهرين اجمعين  
اللهم صل على  
سيدنا محمد وعلى  
آله وصحبه وسلم  
كصلی علی ابراہیم  
وآل ابراہیم الطيبين  
الطاهرين اجمعين  
اللهم صل على  
سيدنا محمد وعلى  
آله وصحبه وسلم  
كصلی علی ابراہیم  
وآل ابراہیم الطيبين  
الطاهرين اجمعين  
اللهم صل على  
سيدنا محمد وعلى  
آله وصحبه وسلم  
كصلی علی ابراہیم  
وآل ابراہیم الطيبين  
الطاهرين اجمعين  
اللهم صل على  
سيدنا محمد وعلى  
آله وصحبه وسلم  
كصلی علی ابراہیم  
وآل ابراہیم الطيبين  
الطاهرين اجمعين

Handwritten text in cursive script, likely a letter or document, written on the left page of an open book. The text is dense and fills most of the page.

Handwritten text in cursive script, likely a letter or document, written on the right page of an open book. The text is dense and fills most of the page.



Handwritten text in a cursive script, likely a letter or a page from a manuscript. The text is written in a fluid, connected style across approximately 12 lines.

Handwritten text in a cursive script, continuing from the previous page. The text is written in a fluid, connected style across approximately 12 lines.

Handwritten text in a cursive script, likely a letter or a page from a manuscript. The text is written in a fluid, connected style across approximately 12 lines.

Handwritten text in a cursive script, likely a letter or a page from a manuscript. The text is written in a fluid, connected style across approximately 12 lines.

Handwritten text in a cursive script, likely a historical document or letter. The text is written in a dark ink on aged, yellowish paper. It consists of approximately 12 lines of text, starting with a large initial letter. The script is highly stylized and difficult to decipher without a key.

Handwritten text in a cursive script, continuing from the previous page. The text is written in a dark ink on aged, yellowish paper. It consists of approximately 12 lines of text, starting with a large initial letter. The script is highly stylized and difficult to decipher without a key.

Handwritten text in Arabic script, consisting of approximately 12 lines of dense, cursive writing.

Handwritten text in Arabic script, consisting of approximately 12 lines of dense, cursive writing.

Handwritten text in a cursive script, likely a form of Arabic or Persian calligraphy, consisting of approximately 12 lines of text.

Handwritten text in a cursive script, likely a form of Arabic or Persian calligraphy, consisting of approximately 12 lines of text.



Handwritten text in a cursive script, likely a letter or a page from a manuscript. The text is written in dark ink on aged, yellowish paper. It consists of approximately 12 lines of text, starting with a small initial that looks like 'D' or 'D'. The script is highly stylized and difficult to decipher without a key.

Handwritten text in a cursive script, continuing from the previous page. It consists of approximately 12 lines of text, starting with a small initial that looks like 'D' or 'D'. The script is highly stylized and difficult to decipher without a key.

Handwritten text in cursive script, likely a letter or document. The text is written in dark ink on aged paper and is oriented vertically on the page.

Handwritten text in cursive script, likely a letter or document. The text is written in dark ink on aged paper and is oriented vertically on the page.

Handwritten text in a cursive script, likely a letter or document. The text is written in a fluid, connected style across approximately 12 lines. The ink is dark and the paper shows signs of age.

Handwritten text in a cursive script, likely a letter or document. The text is written in a fluid, connected style across approximately 12 lines. The ink is dark and the paper shows signs of age.



さがはまもみぢなをひらきわたす  
 月白くして花をいふも  
 うらみえよんばさしをひらきわたす  
 はなはなをいふも  
 かげろふのこころを  
 いまをいふも  
 おくしをいふも  
 けしきをいふも  
 さがはまもみぢなをひらきわたす

おくしをいふも  
 かげろふのこころを  
 いまをいふも  
 おくしをいふも  
 かげろふのこころを  
 いまをいふも  
 おくしをいふも  
 かげろふのこころを  
 いまをいふも  
 おくしをいふも  
 かげろふのこころを  
 いまをいふも  
 おくしをいふも  
 かげろふのこころを  
 いまをいふも





Handwritten text in a cursive script, likely a letter or a page from a manuscript. The text is written in a fluid, connected style across approximately 12 lines.

Handwritten text in a cursive script, continuing from the previous page. The text is written in a fluid, connected style across approximately 12 lines.



Handwritten text in a cursive script, likely a historical document or letter. The text is written in a dark ink on aged, yellowish paper. It consists of approximately 12 lines of text, starting with a large initial letter 'S' and ending with a period. The script is highly stylized and characteristic of the 17th or 18th century.

Handwritten text in a cursive script, likely a historical document or letter. The text is written in a dark ink on aged, yellowish paper. It consists of approximately 12 lines of text, starting with a large initial letter 'S' and ending with a period. The script is highly stylized and characteristic of the 17th or 18th century.



Handwritten text in cursive script, likely a letter or document, written on the right page of the manuscript. The text is dense and fills most of the page.

Handwritten text in cursive script, likely a letter or document, written on the left page of the manuscript. The text is dense and fills most of the page.

Handwritten text in a cursive script, likely a letter or document, written on the left page of an open manuscript. The text is dense and fills most of the page.

Handwritten text in a cursive script, likely a letter or document, written on the right page of an open manuscript. The text is dense and fills most of the page.

Handwritten text in cursive script, likely a letter or document, written on the right page of the manuscript. The text is dense and fills most of the page.

Handwritten text in cursive script, likely a letter or document, written on the left page of the manuscript. The text is dense and fills most of the page.

Handwritten text in a cursive script, likely a historical document or manuscript. The text is written in dark ink on aged, yellowish paper. It consists of approximately 15 lines of text, starting from the top left and moving downwards. The script is highly stylized and difficult to decipher without a key.



Handwritten text in a cursive script, continuing from the previous page. The text is written in dark ink on aged, yellowish paper. It consists of approximately 15 lines of text, starting from the top left and moving downwards. The script is highly stylized and difficult to decipher without a key.

Handwritten text in a cursive script, likely a form of Urdu or Persian, consisting of approximately 12 lines of text.

Handwritten text in a cursive script, likely a form of Urdu or Persian, consisting of approximately 12 lines of text.





Handwritten text in a cursive script, likely a historical document or manuscript. The text is written in a dark ink on aged, yellowish paper. It consists of approximately 12 lines of text, starting with a small symbol at the top left. The script is highly stylized and difficult to decipher without a key.

Handwritten text in a cursive script, continuing from the previous page. It consists of approximately 12 lines of text, maintaining the same highly stylized script. The text is written in a dark ink on aged, yellowish paper.

Handwritten text in cursive script, likely a letter or document, covering the right page of the manuscript. The text is dense and fills most of the page.

Handwritten text at the top of the right page, possibly a signature or a specific heading.

Handwritten text in cursive script, likely a letter or document, covering the left page of the manuscript. The text is dense and fills most of the page.

くさくさしてうなづかぬやうな  
さびしいさびしい山はなほ  
ふたふたのうらみのこゝろ  
はなはたふたふたのこゝろ  
はなはたふたふたのこゝろ  
はなはたふたふたのこゝろ  
はなはたふたふたのこゝろ  
はなはたふたふたのこゝろ  
はなはたふたふたのこゝろ  
はなはたふたふたのこゝろ

くさくさしてうなづかぬやうな  
さびしいさびしい山はなほ  
ふたふたのうらみのこゝろ  
はなはたふたふたのこゝろ  
はなはたふたふたのこゝろ  
はなはたふたふたのこゝろ  
はなはたふたふたのこゝろ  
はなはたふたふたのこゝろ  
はなはたふたふたのこゝろ  
はなはたふたふたのこゝろ

Handwritten text in a cursive script, likely a letter or a page from a manuscript. The text is written in a fluid, connected style across approximately 12 lines.

Handwritten text in a cursive script, continuing from the previous page. The text is written in a fluid, connected style across approximately 12 lines.

Handwritten flourish or initial at the top of the page.

Handwritten text in a cursive script, consisting of approximately 12 lines of text.

Handwritten text in a cursive script, consisting of approximately 12 lines of text.



*[Faint, illegible handwriting in cursive script, likely bleed-through from the reverse side of the page.]*

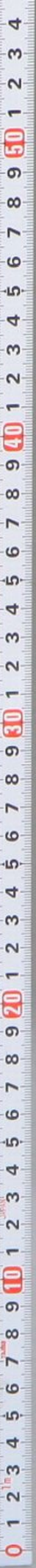




源氏物語  
光院御筆

第六十一番

4867





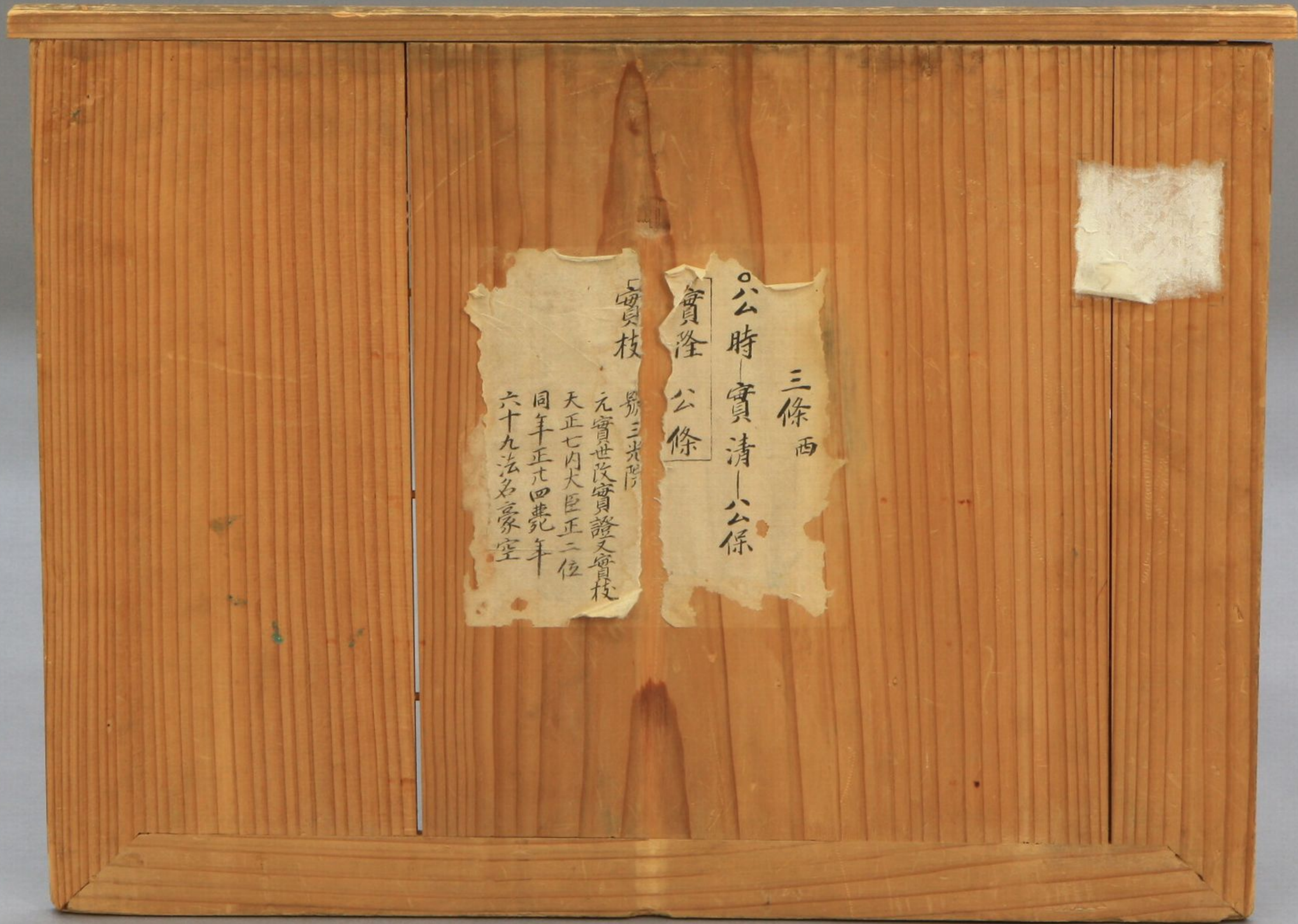


源氏物語  
院御筆

第六拾一番  
冊

4867  
51  
1-53





三條 西

公時 實清 公保

實隆 公條

實枝

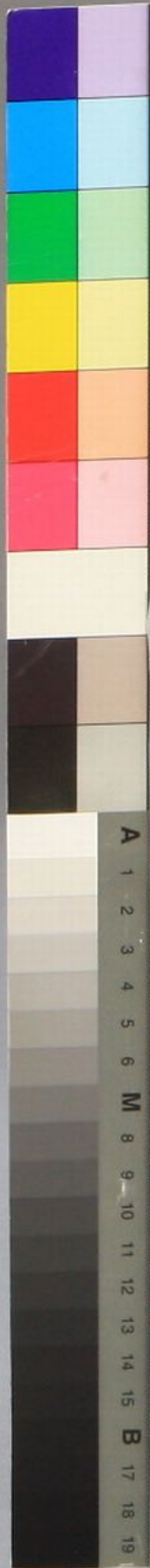
勢三光院

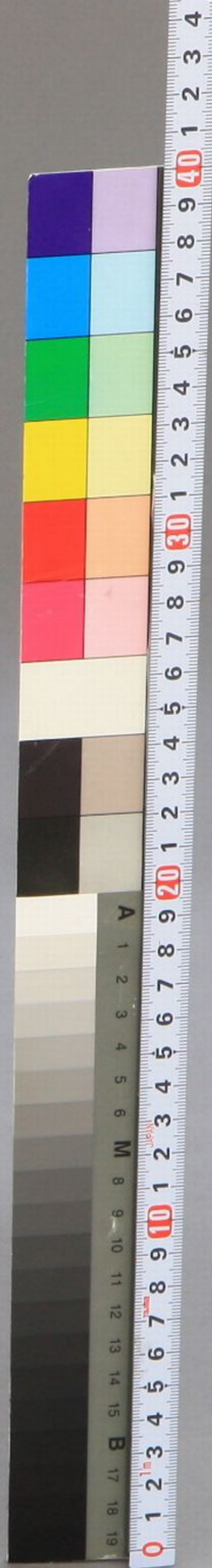
元寶世改實證又實枝

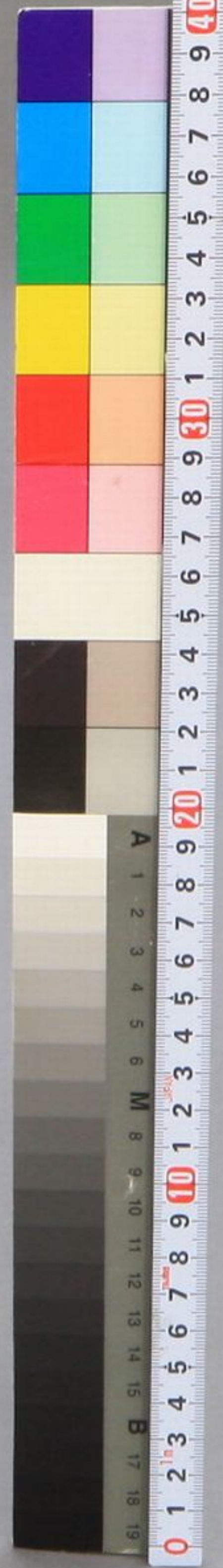
天正七内大臣正二位

同年正元四苑年

六十九法名豪空









金襴花文

じちるぎ  
あつらへ  
わのれ上  
まふ下  
まふ下  
まふ下  
まふ下

まふ下  
けき木  
まふ下  
まふ下  
まふ下  
まふ下  
まふ下

まふ下  
まふ下  
まふ下  
まふ下  
まふ下  
まふ下  
まふ下

まふ下  
まふ下  
まふ下  
まふ下  
まふ下  
まふ下  
まふ下

まふ下  
まふ下  
まふ下  
まふ下  
まふ下  
まふ下  
まふ下

まふ下  
まふ下  
まふ下  
まふ下  
まふ下  
まふ下  
まふ下

まふ下  
まふ下  
まふ下  
まふ下  
まふ下  
まふ下  
まふ下

まふ下  
まふ下  
まふ下  
まふ下  
まふ下  
まふ下  
まふ下

