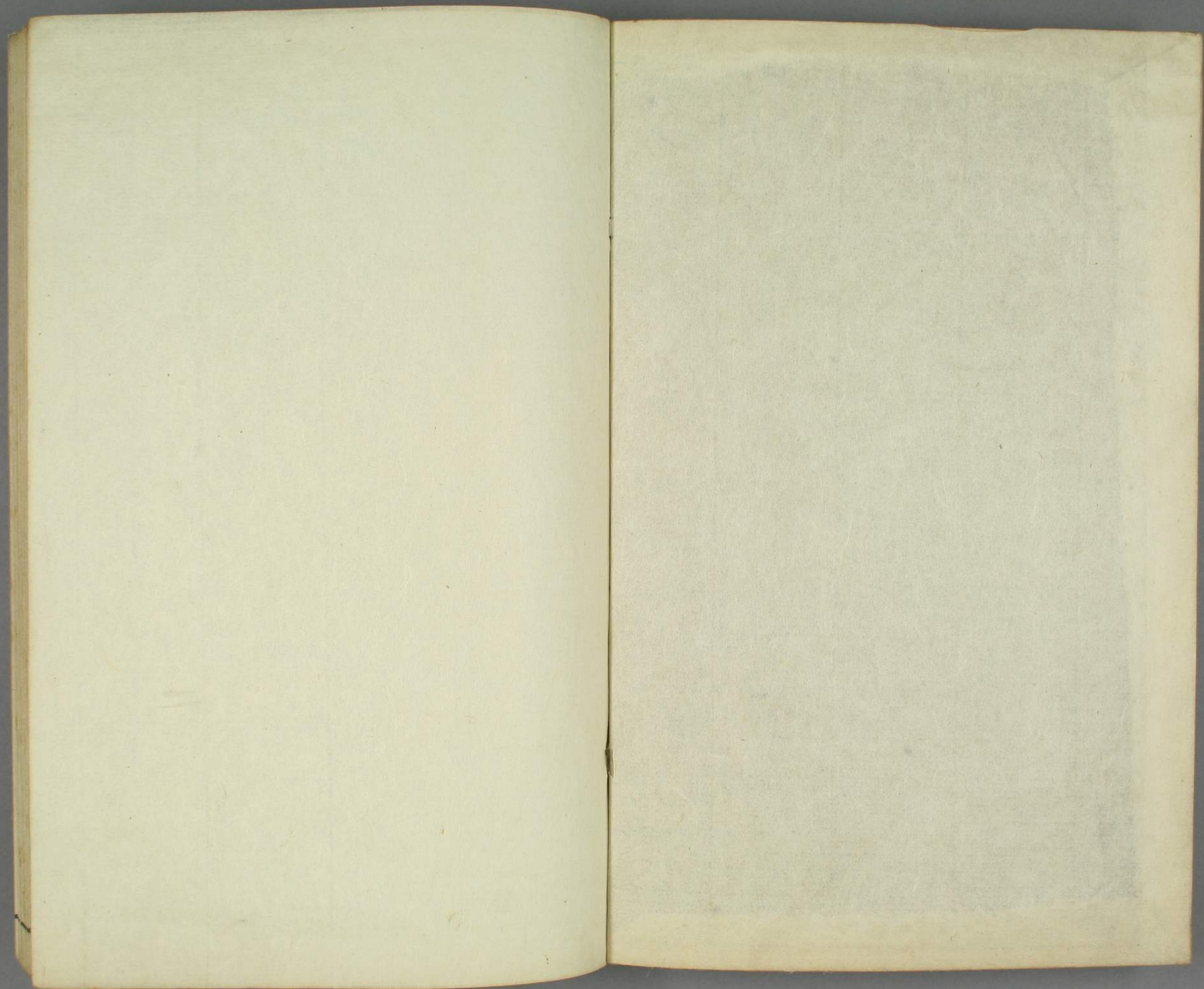


遠くまで
陸

4409
6





はらうらみ六

鶉居

つなぐあふさしりつ波はよまらるる
もろろわも栢の浪松の林はらるる
れ神の本の千はれ法まらるる
ありれ竹のあこ戸城まらるる
あふさしりつさか自さしりつあふさしりつ
あふさしりつあふさしりつあふさしりつ
あふさしりつあふさしりつあふさしりつ
あふさしりつあふさしりつあふさしりつ



Handwritten text in a cursive script, likely a historical document or manuscript. The text is written in a dark ink on aged paper. It consists of approximately 12 lines of text, starting with a large initial letter. The script is highly stylized and characteristic of the early modern period.

Handwritten text in a cursive script, likely a historical document or manuscript. The text is written in a dark ink on aged paper. It consists of approximately 12 lines of text, starting with a large initial letter. The script is highly stylized and characteristic of the early modern period.

其後云、每設東南仍設戶、在長而收之、如常式、乃環以緣、可
也、戶外、外、下、道、常、竹、或、板、以、便、地、降、於、衣、冠、之、外、至、水、箱、連
、見、引、水、以、盥、漱、又、以、灌、庭、中、草、木、室、西北、必、墻、砌、下、數、至、低、牆、以、
、通、風、且、房、上、設、戶、向、園、或、垂、第、簾、之、北、距、墻、五、六、步、就、建、出、房、
、西北、隅、植、竹、以、遮、夏日、東、植、梧、相、數、十、株、以、障、朝、日、一、側、酒、必、於、室、
、北、異、屋、外、墻、架、板、為、安、儀、欄、左、右、阿、傾、跌、漉、缸、圍、在、房、外、便、及、
、日、即、及、日、臭、甚、於、此、才、是、死、降、國、織、韆、之、耐、也、其、製、以、消、息、
、之、酒、室、必、於、室、東、向、與、酒、相、及、世、人、之、酒、相、涉、活、時、臭、大、不、降、如、是、
、皆、以、燕、居、之、室、及、畫、齋、四、席、中、六、席、八、席、而、去、其、正、堂、自、
、

之法、然、不、失、以、之、而、余、性、苦、熱、夏、日、屋、膝、危、坐、徒、值、殊、甚、於、是、
、有、畫、齋、之、式、以、四、席、中、六、席、為、限、營、造、依、新、制、不、用、板、磚、地、設、
、榻、或、椅、皆、倣、漢、人、居、數、至、其、堅、設、水、盤、茶、具、余、人、謂、之、水、皮、者、具、噴、
、香、以、洒、磚、席、之、耐、煩、致、老、日、刻、林、以、排、骨、磚、上、仍、席、如、常、式、以、
、畫、室、之、者、則、徹、去、林、是、一、室、二、用、呼、呼、此、營、造、不、過、費、三、四、十、金、可、
、可、辨、矣、以、時、之、且、居、處、徒、故、不、果、之、款、因、以、造、好、事、者、可、謂、為、
、他人、也、跡、不、索、矣、又、西、曰、古、制、之、家、者、及、高、一、居、何、必、一、室、二、用、於、
、指、大、之、言、也、如、此、之、れ、わ、文、心、を、や、と、て、お、お、お、お、お、お、
、さ、り、ハ、さ、り、さ、り、さ、り、さ、り、さ、り、さ、り、さ、り、さ、り、さ、り、さ、り、さ、り、
、

Handwritten text in a cursive script, likely a historical document or manuscript. The text is written in a single column on the right page of the open book. It appears to be a list or a series of entries, possibly related to a collection or inventory. The script is dense and difficult to decipher without a key.

114

Handwritten text in a cursive script, likely a historical document or manuscript. The text is written in a single column on the left page of the open book. It appears to be a list or a series of entries, possibly related to a collection or inventory. The script is dense and difficult to decipher without a key.

てぞ、おのゝりありき、

僕已不才且ふ、伯、我二十、以、將、七旬、心力、取、骸、漸、衰、死、後、
每一人之有塵骨者、是、以、卜、善、藏、于、南、禪、山、中、西、福、精、舍、之、
紅梅樹下、且、作、棺、以、純、字、僧、優、遊、俟、天、命、已、於、是、三、三、名、家、以、
先、友、之、氣、系、好、文、吟、呼、不、亦、幸、哉、

孝世齋

以、何、所、餘、以、我、卜、善、藏、于、南、禪、山、中、西、福、精、舍、之、
紅梅樹下、且、作、棺、以、純、字、僧、優、遊、俟、天、命、已、於、是、三、三、名、家、以、
先、友、之、氣、系、好、文、吟、呼、不、亦、幸、哉、
庶、好、造、化、也、十、月、後、以、我、好、題、屬、事、而、反、余、也、猶、冬、月、生、天、恐、不、後、
亦、嘗、學、書、我、亦、鄉、遊、待、之、墨、痕、回、晴、雪、之、名、錄、不、朽、

力之由

以、之、法、良、不、羅、可、此、梅、樹、勁、軒、屈、曲、不、撓、梅、花、紅、嬌、芳、馥、堪、歎、會、英、
如、真、之、文、性、為、可、誇、干、梅、之、不、愧、干、菊、余、亦、能、詩、性、聊、書、以、誌、
塞、其、需、云、

右二子應端畫上之題言

長教室記

南歌子

客、歲、于、役、浪、華、吏、事、之、餘、見、一、奇、文、云、是、餘、好、寫、文、後、費、不、已、歎、見、
其人、既、見、之、常、元、精、舍、不、當、奇、其、文、而、後、人、亦、奇、矣、乃、請、山、公、記、
為、之、不、按、不、自、成、益、信、之、奇、乃、為、奇、也、小、杜、和、摺、杜、詩、韓、愈、結、
其、讀、似、以、麻、姑、亦、似、搔、余、於、蜀、文、云、夫、一、見、而、增、縞、帶、一、絕、而、
不、復、敢、聚、古、人、之、於、知、已、之、如、以、者、矣、今、東、山、為、此、長、教、室、以、

Handwritten text in a cursive script, likely a historical document or manuscript. The text is written in a single column on the right page of the open book.

Handwritten text in a cursive script, likely a historical document or manuscript. The text is written in a single column on the left page of the open book.

Handwritten text in a cursive script, likely a historical document or manuscript. The text is written in a single column on the right page of the open book.

Handwritten text in a cursive script, likely a historical document or manuscript. The text is written in a single column on the left page of the open book.

Handwritten text at the top of the page.

Main body of handwritten text on the right page.

Main body of handwritten text on the left page.

Main body of handwritten text on the right page.

松本光
依林

Handwritten text in a cursive script, likely a historical document or letter. The text is written in a dark ink on aged paper. It begins with a long horizontal line, possibly a signature or a decorative flourish. The main body of the text consists of several lines of dense, flowing script. The characters are highly stylized and interconnected, characteristic of a cursive hand. The text appears to be a formal communication, possibly a treaty or a diplomatic letter, given the context of the page number and the style.

Handwritten text in a cursive script, continuing from the previous page. The text is written in a dark ink on aged paper. It begins with a long horizontal line, possibly a signature or a decorative flourish. The main body of the text consists of several lines of dense, flowing script. The characters are highly stylized and interconnected, characteristic of a cursive hand. The text appears to be a formal communication, possibly a treaty or a diplomatic letter, given the context of the page number and the style.

Handwritten text in a cursive script, likely a historical document or manuscript. The text is written in a dark ink on aged paper. It appears to be a list or a series of entries, possibly related to a collection or a set of records. The script is dense and fills most of the page.

Handwritten text in a cursive script, continuing from the previous page. The text is written in a dark ink on aged paper. It appears to be a list or a series of entries, possibly related to a collection or a set of records. The script is dense and fills most of the page.

Handwritten text in a cursive script, continuing from the previous page. The text is written in a dark ink on aged paper. It appears to be a list or a series of entries, possibly related to a collection or a set of records. The script is dense and fills most of the page.

ふゑとくもいひの清めてさしつゝとあしは清き心をたぬ
まわぬか九条の農家の女いつらもいふ可き何れ極みの葉を卷
かすれ又母もさういひて難波よりつらきもさふ甘一家
よのうづよちゆれをよ十八つと世を遊しものいぬ常
多痛の如くかゝつてさふもあはれめもいへし
て、髪を薙ぎたれども改むよもいふわいへん
一うごわいへんいへんいへんいへんいへんいへん
めもいへんいへんいへん

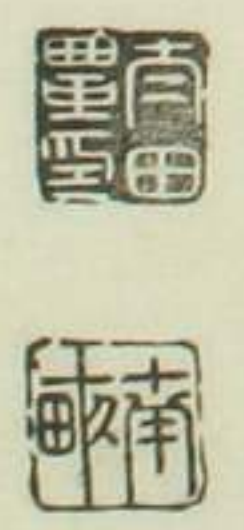
つゝ存ふ巻六の尾

後序

蓋吾見世善和歌者矣未聞善國文
者凡國文之難非帝今也自古而然
若夫古今集序之駢儷也三鑑之典
實也勢語之簡潔也源氏之繁富也
可謂金聲而玉振之也者矣嘗讀扶
桑拾葉集
皇朝文藻炳焉可觀而至於中葉以
下則意達而已矣唯惺窩長嘯二老

以清辭為文所謂豪傑之士者然藤
偏於古而聲牙難讀豐偏於浮而
餽飮可厭蓋國文之難不其然乎
辛酉祗役浪華得見餘齋翁邂逅
相遇願適訪劇翁手書歌若文數
篇見贈去光片羽可以為儀意在筆
尖如不覺其難者然甲子者崎陽之
命倉皇上道之遺浪華再見翁之年
七十禁絕筆硯平生所著存之善火院之

昇道師者与翁善因請上木吾聞之
幸而不寐到崎視事簿書堆案餘
冬偷閒暇綴數語郵致諸昇道師不
知吾之所蘊能中翁意否
文化紀元甲子仲冬之吉江戸大田覃
圭於瓊浦客舍



文化丁卯春發行

江戸

須原屋

平助

大坂

大野木市兵衛

京都

小川五兵衛

菊屋源兵衛

