

寄文祝

益田正島屋白井村とて

○ 新年望山
乃年望山

新年望山

○ 新年望山
乃年望山

大正(年)

氷解

松浦伯言家二月令

○ 氷解
松浦伯言家二月令

この頃... 山菅の根... 根岸出香... 車... 山菅の根... 根岸出香... 車... 山菅の根... 根岸出香... 車...

根岸出香... 山菅の根... 車...

山菅の根... 根岸出香... 車... 山菅の根... 根岸出香... 車... 山菅の根... 根岸出香... 車...

女聖歌

山菅の根... 根岸出香... 車... 山菅の根... 根岸出香... 車... 山菅の根... 根岸出香... 車...

田上雁

山菅の根... 根岸出香... 車... 山菅の根... 根岸出香... 車... 山菅の根... 根岸出香... 車...

古無法... 山菅の根... 根岸出香... 車...

野梅

梅の香は遠くまで
かきこえる
春の訪れを告げる
花の匂い

初雪

雪の降る日は
静かである
冬が始まる
白の世界

文淵堂

春の訪れを告げる
花の匂い
梅の香は遠くまで
かきこえる

春意

春の訪れを告げる
花の匂い
梅の香は遠くまで
かきこえる
春の訪れを告げる
花の匂い

Handwritten text in cursive style, likely a poem or prose. The text is written in black ink on a page with blue horizontal lines. There are several red circles and dots scattered throughout the text, possibly indicating specific characters or punctuation. The text is arranged in approximately 12 horizontal lines.

春心

Handwritten text in cursive style, likely a poem or prose. The text is written in black ink on a page with blue horizontal lines. There are several red circles and dots scattered throughout the text, possibly indicating specific characters or punctuation. The text is arranged in approximately 12 horizontal lines.

水色

湖墨塘櫻花

Handwritten text in cursive style, likely a poem or prose. The text is written in black ink on a page with blue horizontal lines. There are several red circles and dots scattered throughout the text, possibly indicating specific characters or punctuation. The text is arranged in approximately 12 horizontal lines. Some lines are crossed out with red ink.

Handwritten text in a cursive script, likely a musical score or a form of shorthand. The text is written on a page with blue horizontal lines. A red circle is visible at the top of the page. The script is dense and fills most of the page.

苦楚

Handwritten text in a cursive script, likely a musical score or a form of shorthand. The text is written on a page with blue horizontal lines. A red circle is visible at the top of the page. The script is dense and fills most of the page.

待

たは先程の如く、
しにあらしむるもの

くちりあせりしむるもの
をいふに、
●

明治十八年十二月十二日、
皇太后御病癒

をいふに、
天をりしむるもの

をいふに、
天をりしむるもの

百千世の如く、
くちりあせりしむるもの

城の如く、
しにあらしむるもの

をいふに、
天をりしむるもの

をいふに、
天をりしむるもの

をいふに、
天をりしむるもの

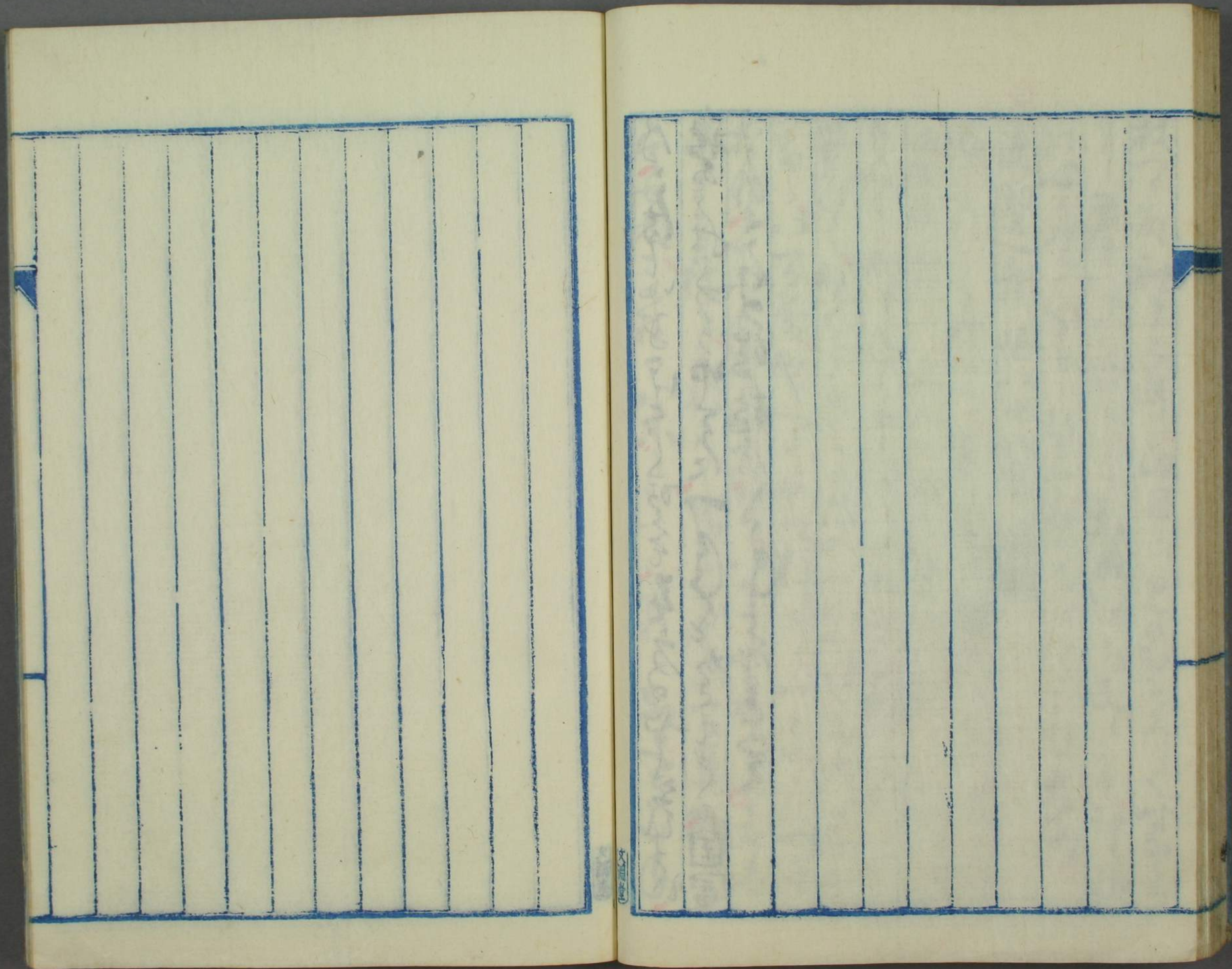
をいふに、
天をりしむるもの

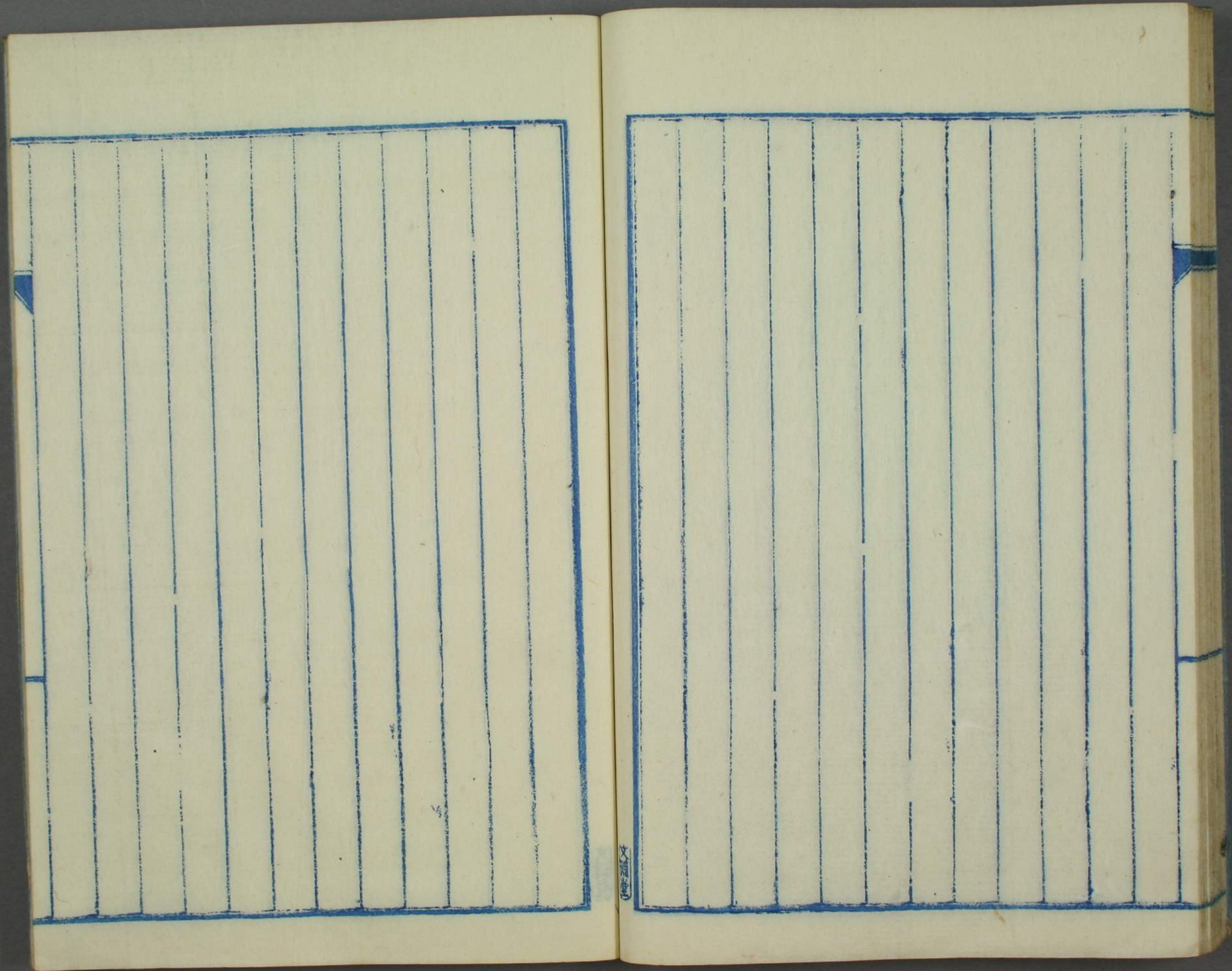
をいふに、
天をりしむるもの

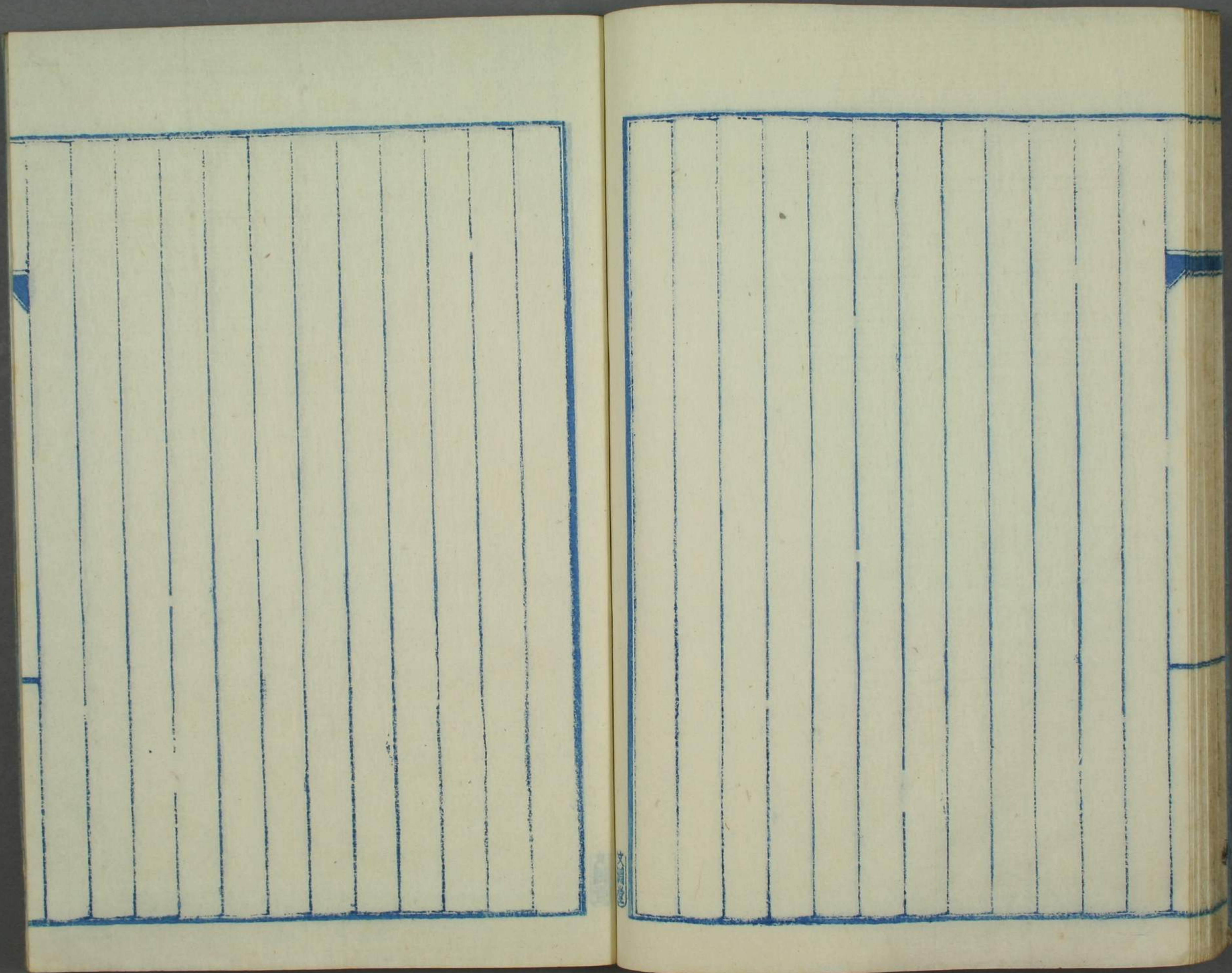
をいふに、
天をりしむるもの

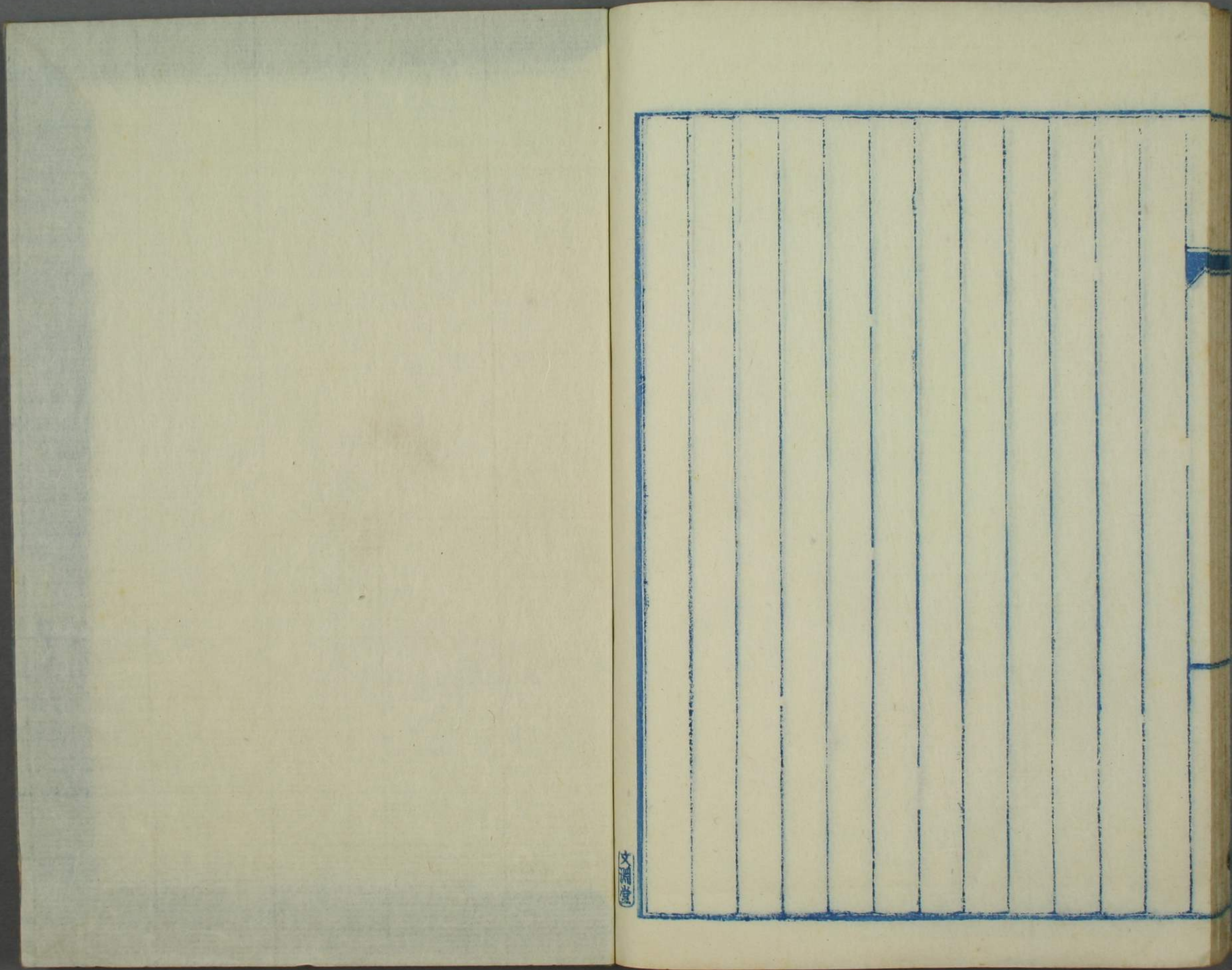
Handwritten text in a cursive script, likely a form of Japanese calligraphy. The text is written on a page with blue horizontal lines. A red circle is visible at the top center of the page. The text is arranged in approximately 15 vertical columns, reading from right to left. The characters are fluid and connected, characteristic of cursive writing. Some characters are marked with red dots, possibly indicating specific points of interest or corrections.

Handwritten text in a cursive script, likely a form of Japanese calligraphy. The text is written on a page with blue horizontal lines. The text is arranged in approximately 15 vertical columns, reading from right to left. The characters are fluid and connected, characteristic of cursive writing. Some characters are marked with red dots, possibly indicating specific points of interest or corrections.









大正

