

Kodak
LICENSED PRODUCT

© The Tiffen Company, 2000

KODAK Color Control Patches

Centimetres

3/Color Black

White

Magenta

Red

Yellow

Green

Cyan

Blue

B 17 18 19

B

13 14 15

11 12

9 10

8

M

6

5

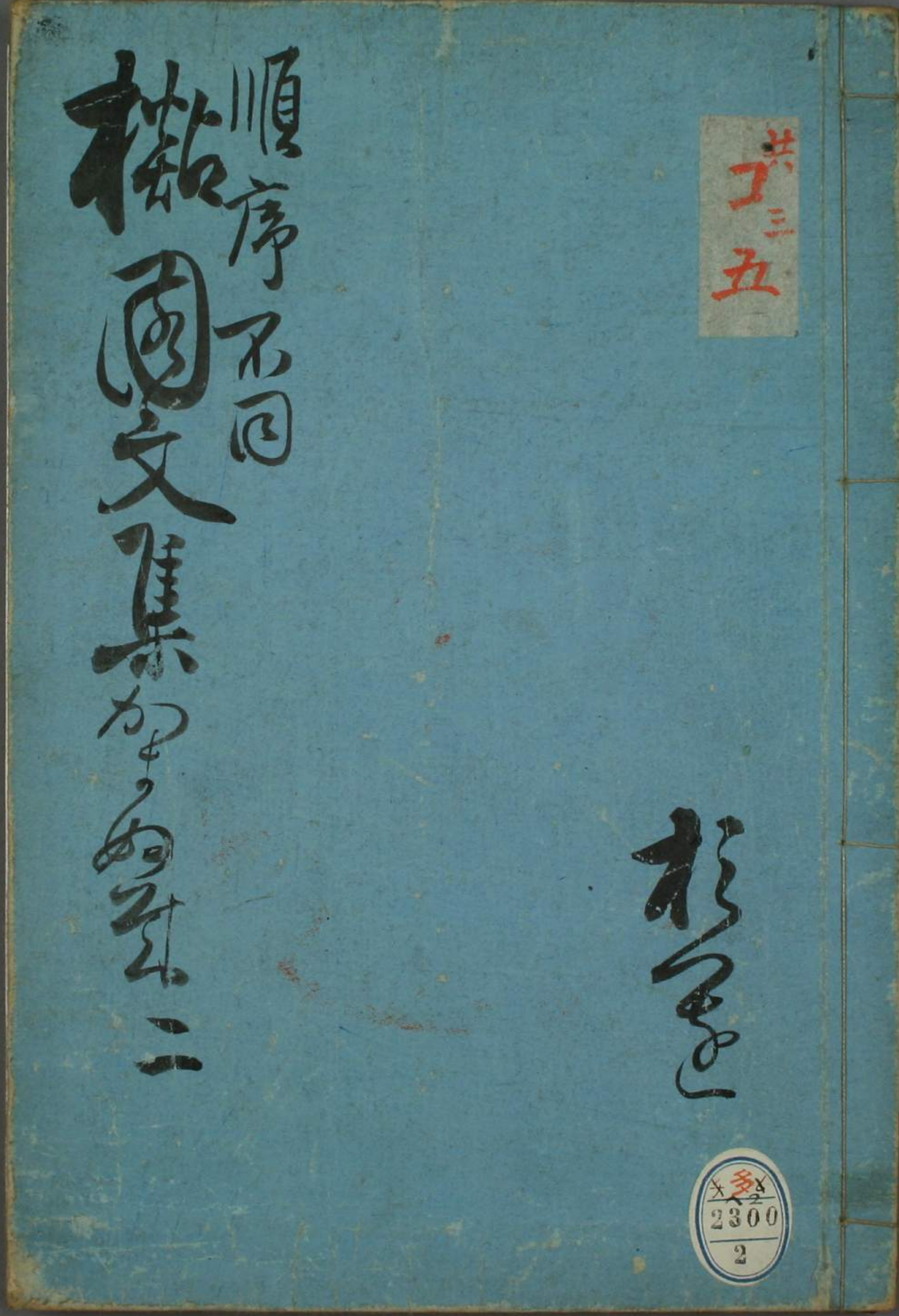
4

3

2

A 1

A



松園文集
順序不固

共三五

松園

2300
2



一のり
 秋のあき後
 なるわさ
 こゝろの友
 だんけり
 善村や

文久三年の春
 山形市
 武蔵國
 故郷柳
 中

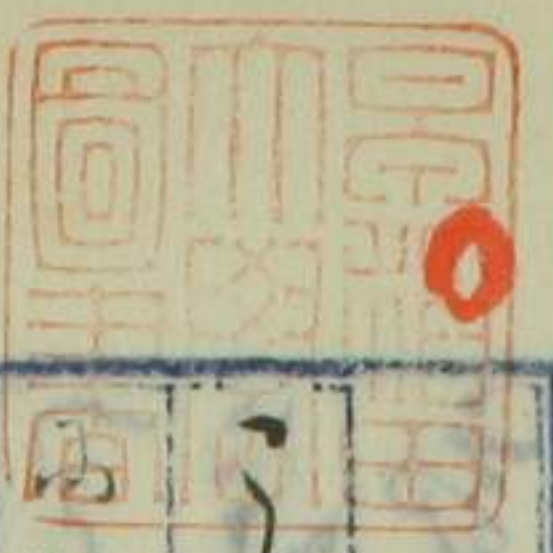
菅公も
 山名も
 武蔵國
 故郷柳
 中

1多2
 2300
 2

文久三年の春

山形市

武蔵國



文久三年の春
 山形市
 武蔵國
 故郷柳
 中

Handwritten text in Arabic script, likely a religious or philosophical treatise. The text is written in black ink on aged paper with blue horizontal ruling. Red dots are used as diacritics. The script is a cursive style, possibly Maghrebi or Ottoman. The text is arranged in approximately 12 horizontal lines.

Handwritten marginal note or page marker in Arabic script, located at the bottom left of the page.

Handwritten text in Arabic script, continuing the text from the previous page. The text is written in black ink on aged paper with blue horizontal ruling. Red dots are used as diacritics. The script is a cursive style, possibly Maghrebi or Ottoman. The text is arranged in approximately 12 horizontal lines.

Handwritten text in a cursive script, likely a form of Japanese calligraphy (Shodō). The text is written in black ink on a light-colored page, with some red ink used for accents or corrections. The writing is dense and fills most of the page.

Handwritten text in a cursive script, likely a form of Japanese calligraphy (Shodō). The text is written in black ink on a light-colored page, with some red ink used for accents or corrections. The writing is dense and fills most of the page.

Handwritten text in cursive Japanese style (sōsho) on the right page. The text is dense and fills most of the page.

文政

五五五五

二二二二

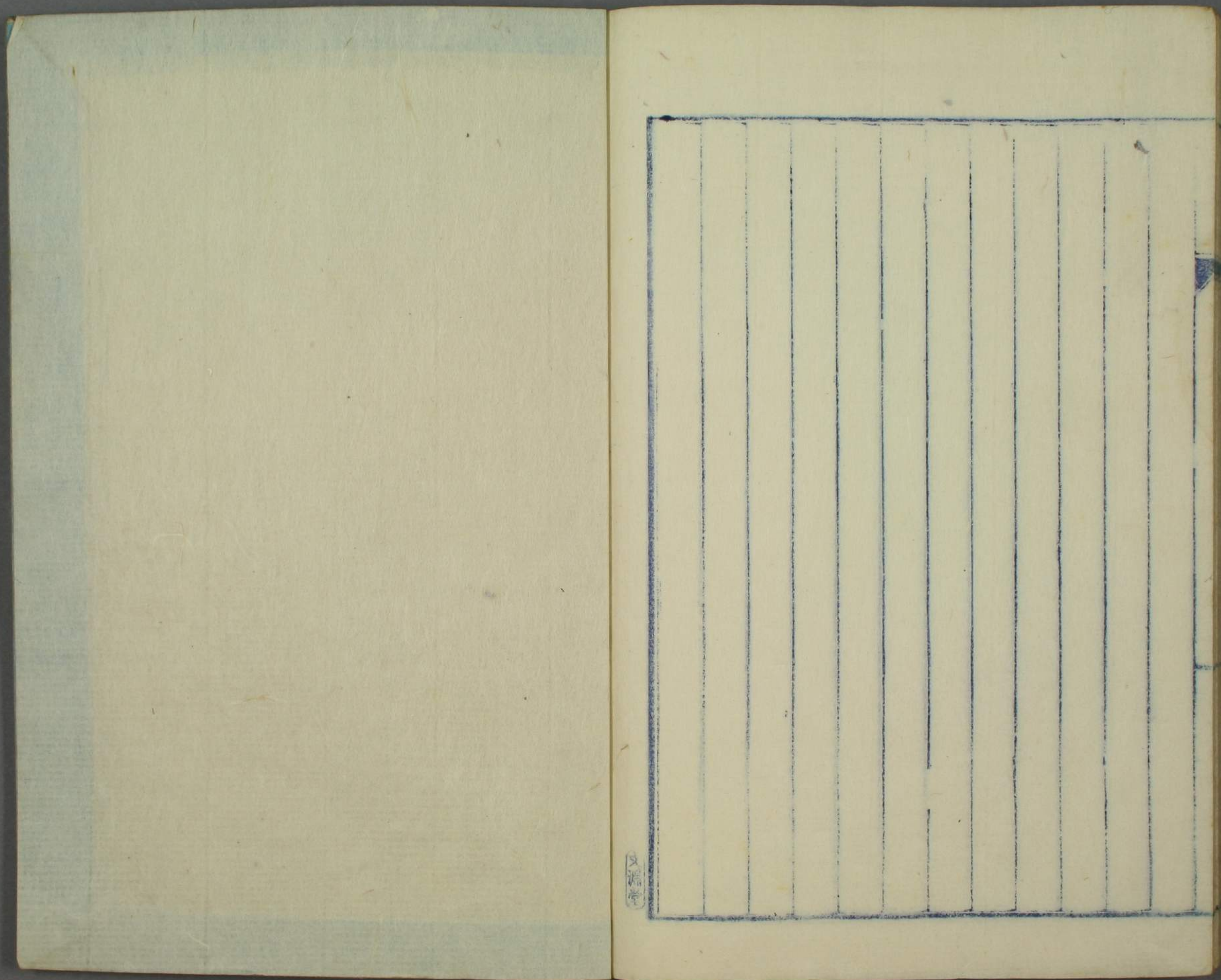
〇

Handwritten text in cursive Japanese style (sōsho) on the left page. The text is dense and fills most of the page.

Handwritten text in a cursive script, likely a form of Arabic or Persian calligraphy. The text is written in black ink on aged paper. It consists of approximately 12 lines of text, with some characters highlighted in red. The script is dense and flowing, characteristic of historical Islamic manuscripts. A small red circle is visible at the top left of the page.

Handwritten text in a cursive script, likely a form of Arabic or Persian calligraphy. The text is written in black ink on aged paper. It consists of approximately 12 lines of text, with some characters highlighted in red. The script is dense and flowing, characteristic of historical Islamic manuscripts. A small red circle is visible at the top left of the page.

以下
14 丁
白紙



文源堂

