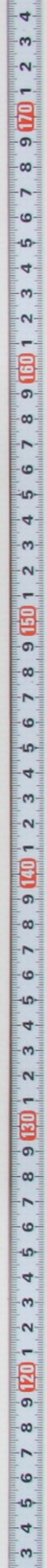


63- 2647





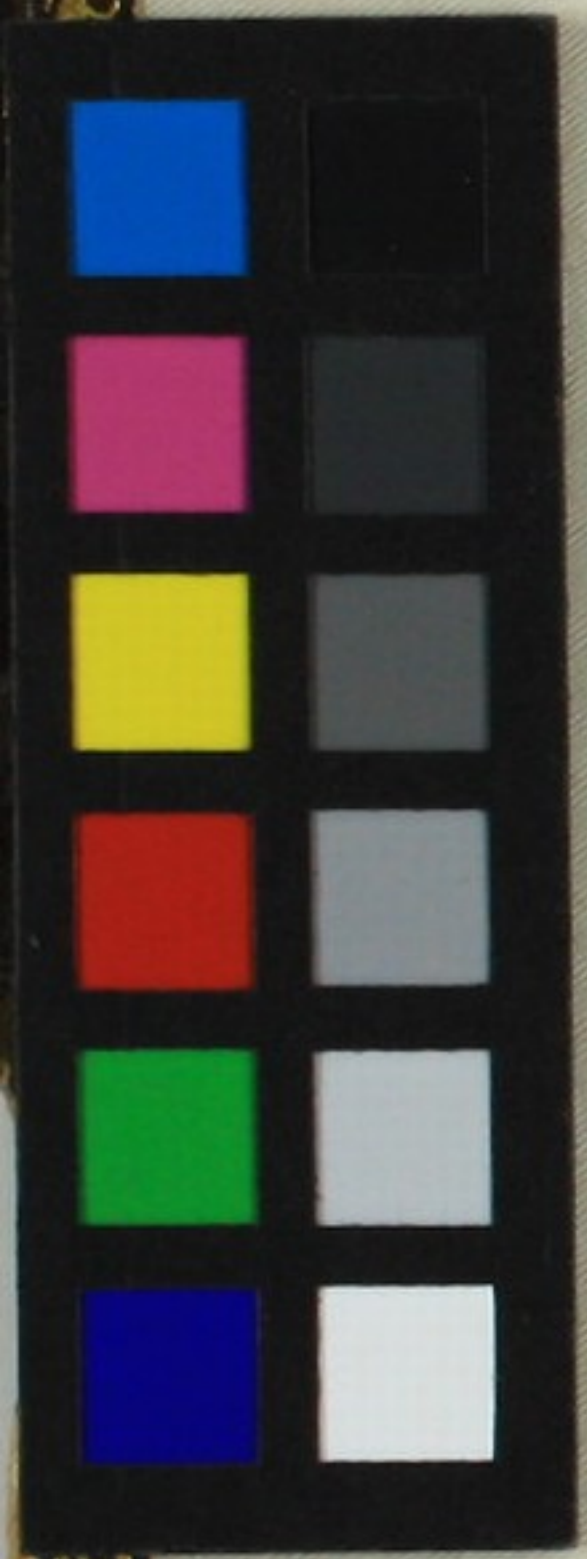
NOGE HILL CHERRY FLOWER, STREET YOKOHAMA.

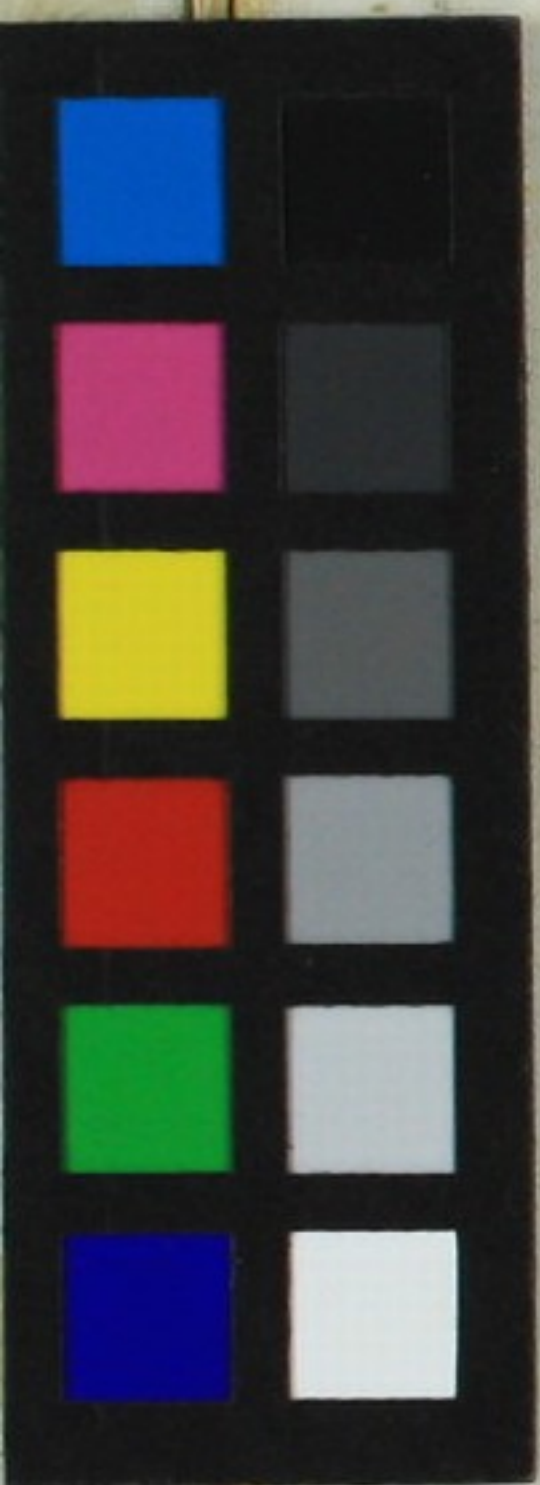




横濱海岸通拾六番館
ファサリ商會
写真店

A. FARSARI & Co.,
PHOTOGRAPHERS, PAINTERS, SURVEYORS PUBLISHERS & COMMISSION AGENTS.
No. 16 Bund, Yokohama, Japan.





NOGE HILL CHERRY FLOWER, STREET YOKOHAMA.



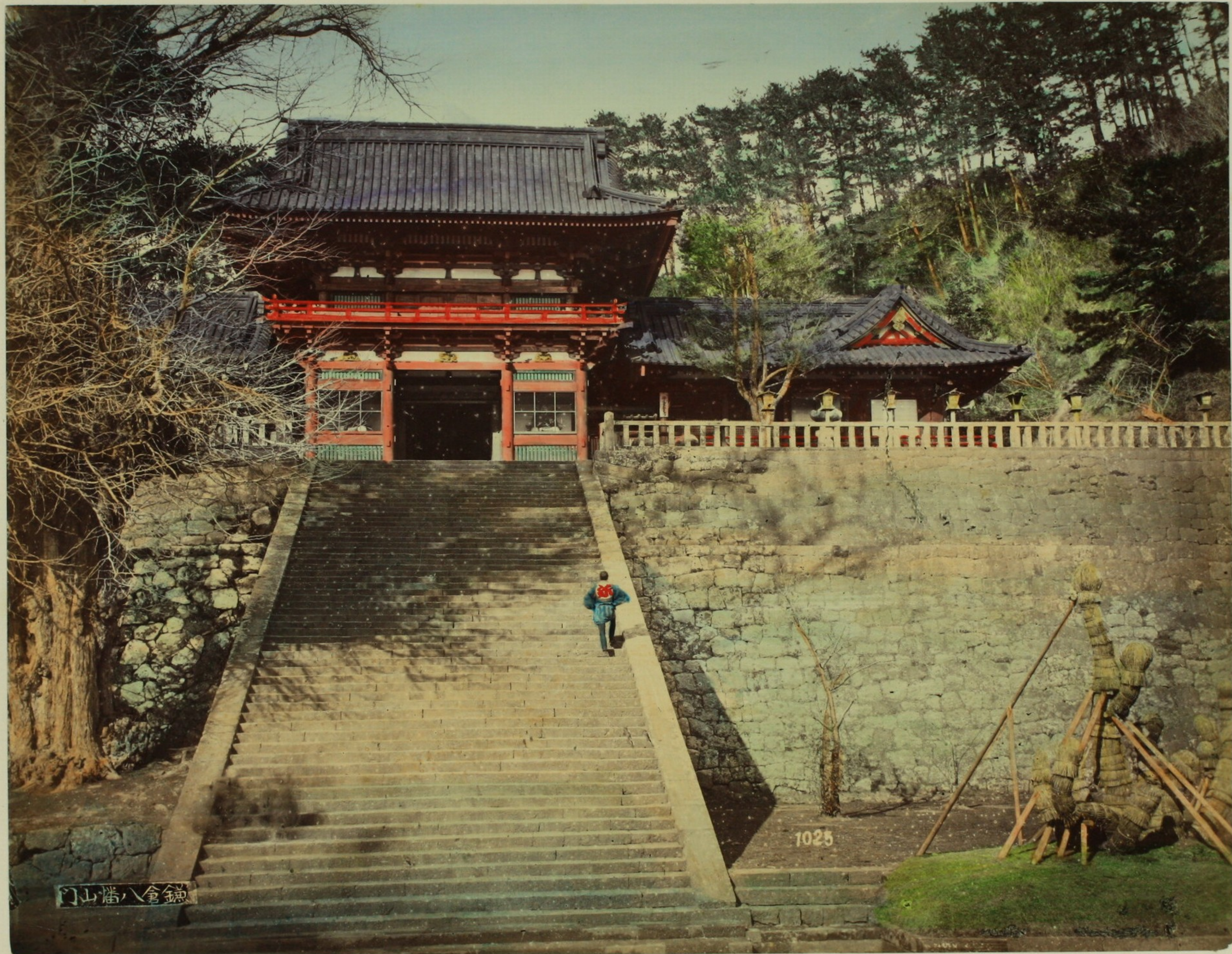


BENTEN DORI YOKOHAMA.

520



100 STEPS AT YOKOHAMA.



SHINTO TEMPLE HACHIMAN, AT KAMAKURA.



1016.

VIEW OF YENOSHIMA.



VIEW OF TONOSAWA.



963.

VIEW OF MIYANOSHITA, HOT-SPRING.



1662.

VIEW OJIGOKU, OR GREAT BOILING SPRINGS, HAKONE.



VIEW OF HAKONE LAKE.



Miyagino River, near Kiga.



VIEW OF FUJIYAMA.



SHIRAITO WATERFALL, AT FUJIYAMA.



669

SHINOBADSU (POND) UYENO TOKIO.



SHIBA TEMPLE, TOKIO.



OJI TEA HOUSE GARDEN AT TOKIO.



THE DOUBLE BRONZE IMAGES, ASAKUSA, TOKIO.



CHERRY FLOWER, UYENO, TOKIO.



VIEW OF SACRED BRIDGE, AT NIKKO.



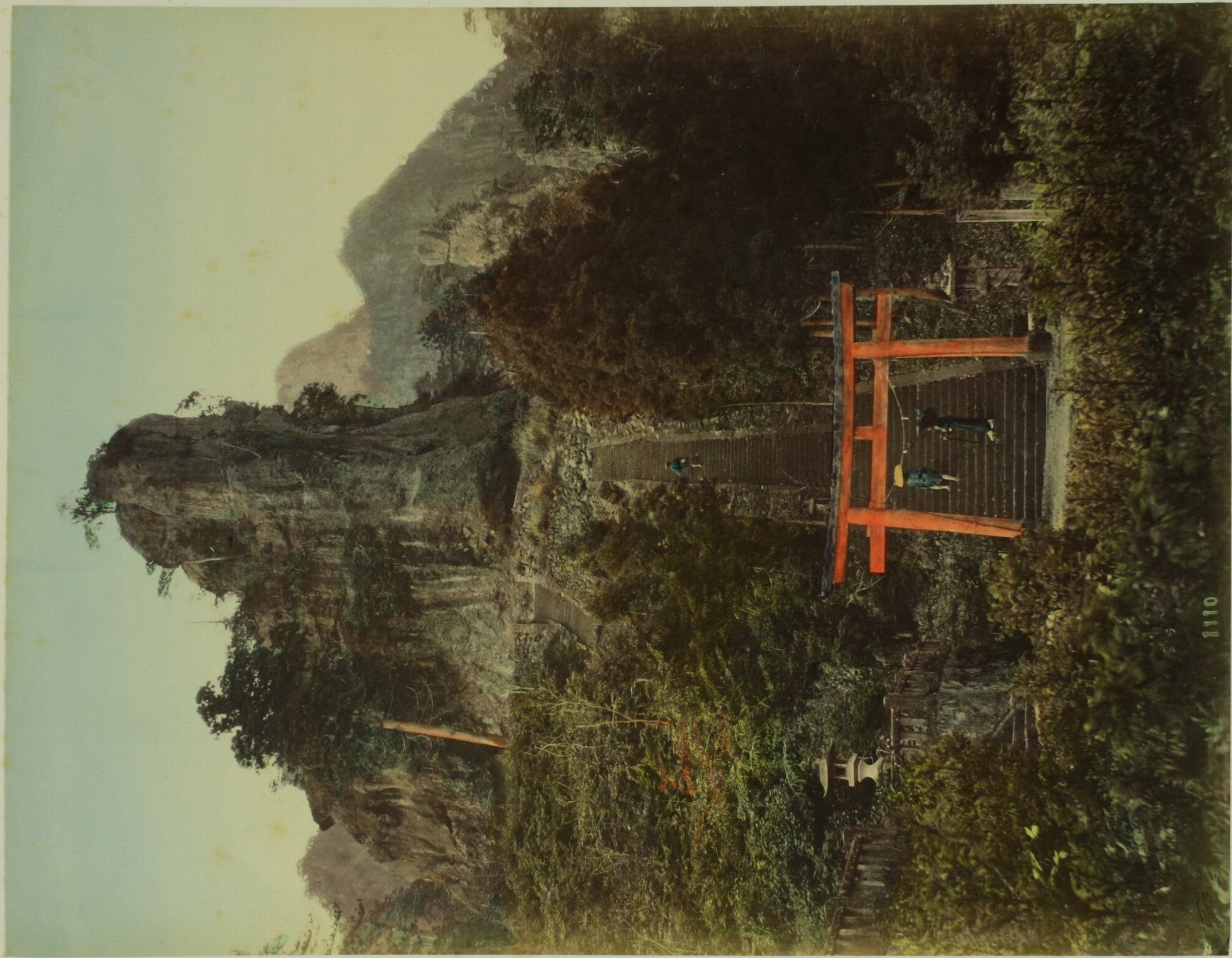
STOREHOUSE FOR TREASURE AT NIKKO.



YOMEI MON (GREAT GATE), AT NEKKO.



CHIUSENJI LAKE, AT NIKKO.



1110

200 STEPS NAKANOTAKE, MIOGI MOUNTAIN.



SHIMONO SAWA (TEA HOUSE) AND FIRE BELL AT NAKASENDO.



1208

METAKI (WATERFALL) AT KOBE.



VIEW OF ARIMA.



TEN-NŌJI TEMPLE AT OSAKA.



VIEW OF KIOTO.



VIEW OF GINKAKUGE GARDEN, AT KIOTO



VIEW OF RAPIDS, AT KIOTO.



VIEW OF KINTAI BASHI BRIDGE AT IWAKUNI.



PAPENBERG NAGASAKI.



MIKO OR PERFORMER IN A KAGURA.



CARRYING BABY.

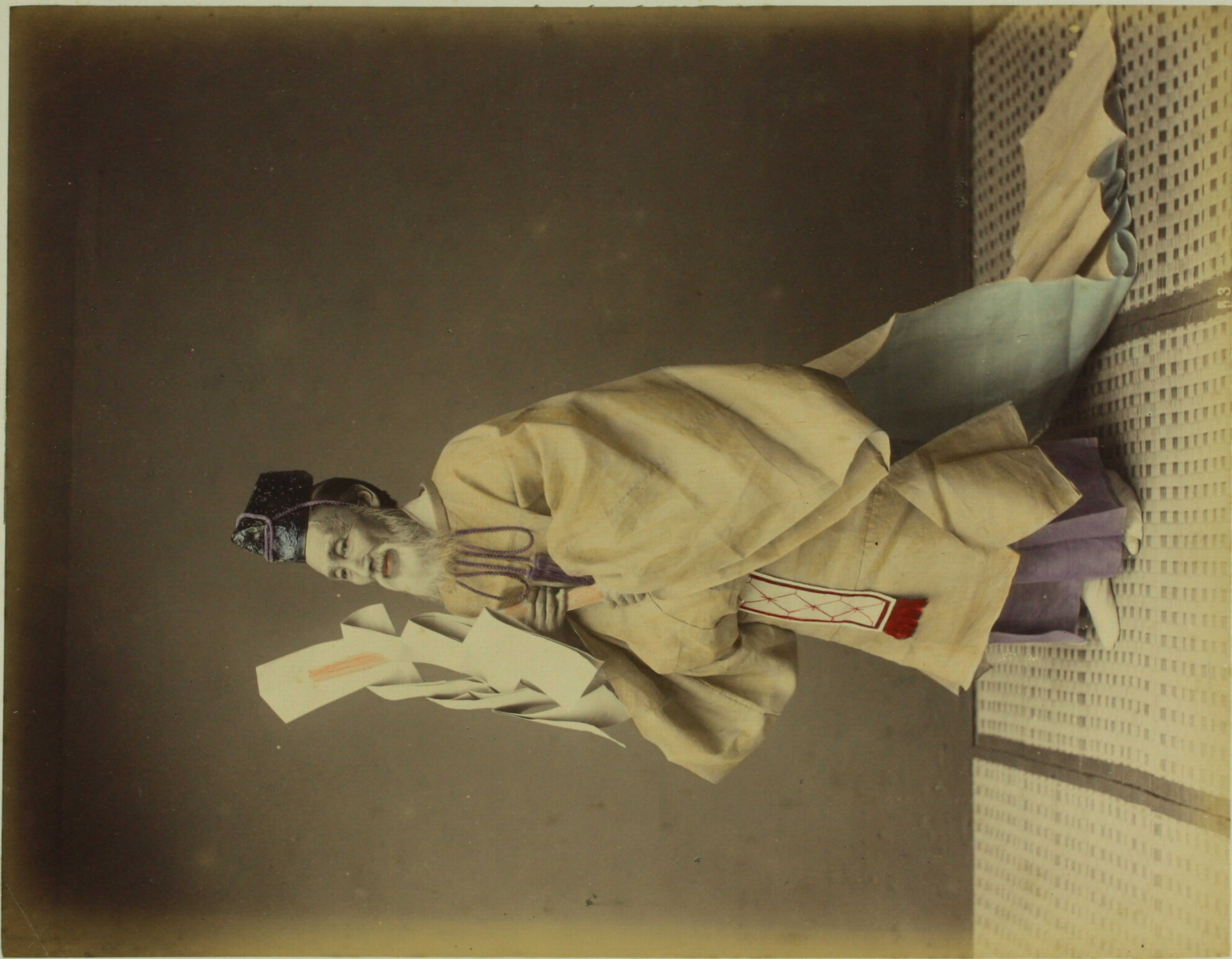


32.

GENERAL.



HAIR DRESSING.



SHINTO PRIEST.



BUDDHIST PRIESTS.



GIRL IN WINTER COSTUME.



COOLIE WINTER DRESS.



DANCING PARTY.



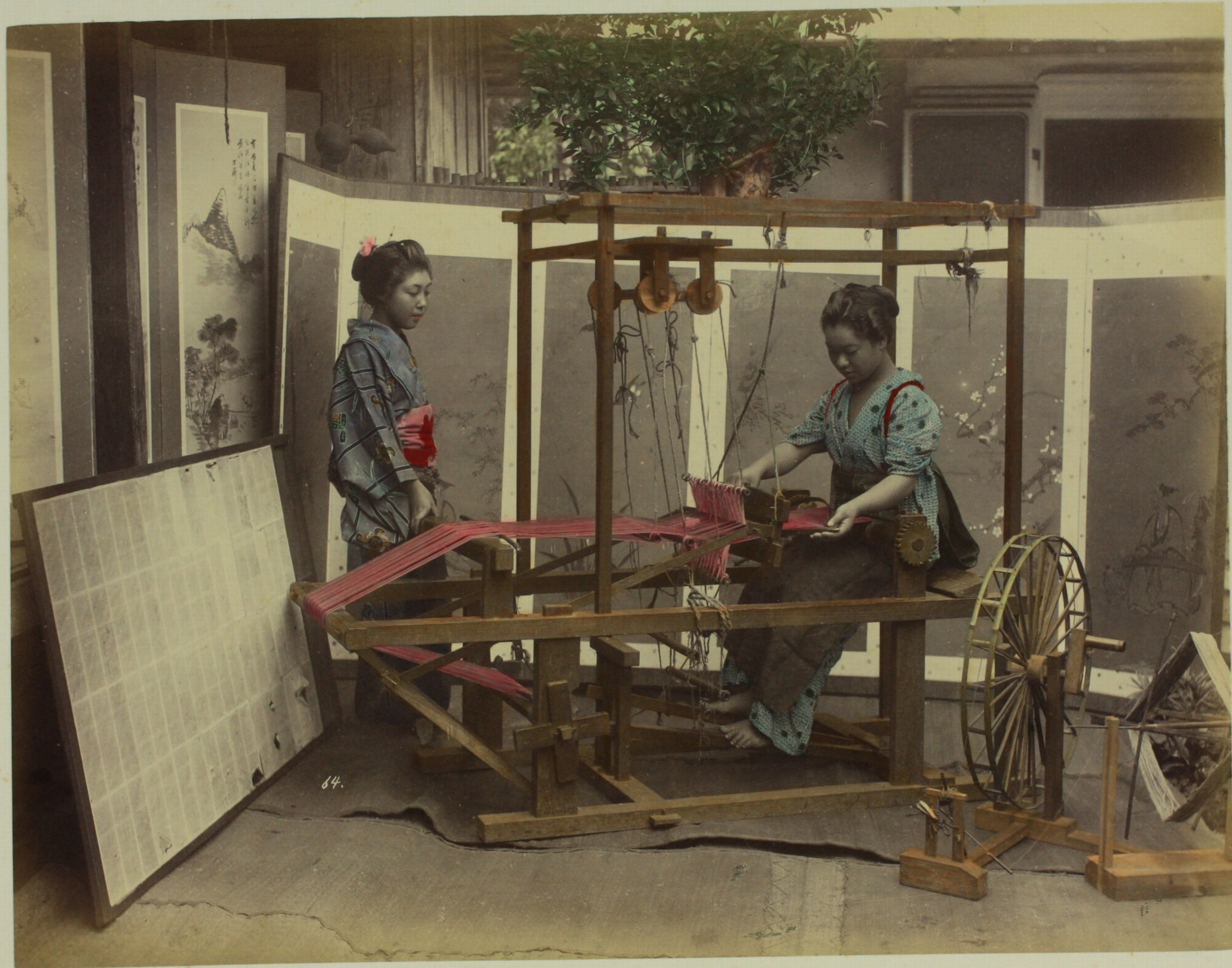
GIRLS PLAYING KOTO AND SAMISEN.



JINRIKISHIA.



KAGO, TRAVELLING CHAIR.



WEAVING SILK.



TEA-PICKING.



SELLING FLOWERS.



PACK HORSE.



BRIND SHAMPOER.



CUTTING RICE.



SAMURAI IN ARMOUR.

