

杷ツライ

篋ツツイ

謡曲拾葉歌

あまのこころとあまのこころ
あまのこころとあまのこころ
あまのこころとあまのこころ

春

か
乳のあまのこころとあまのこころ

15301
3943
415
133



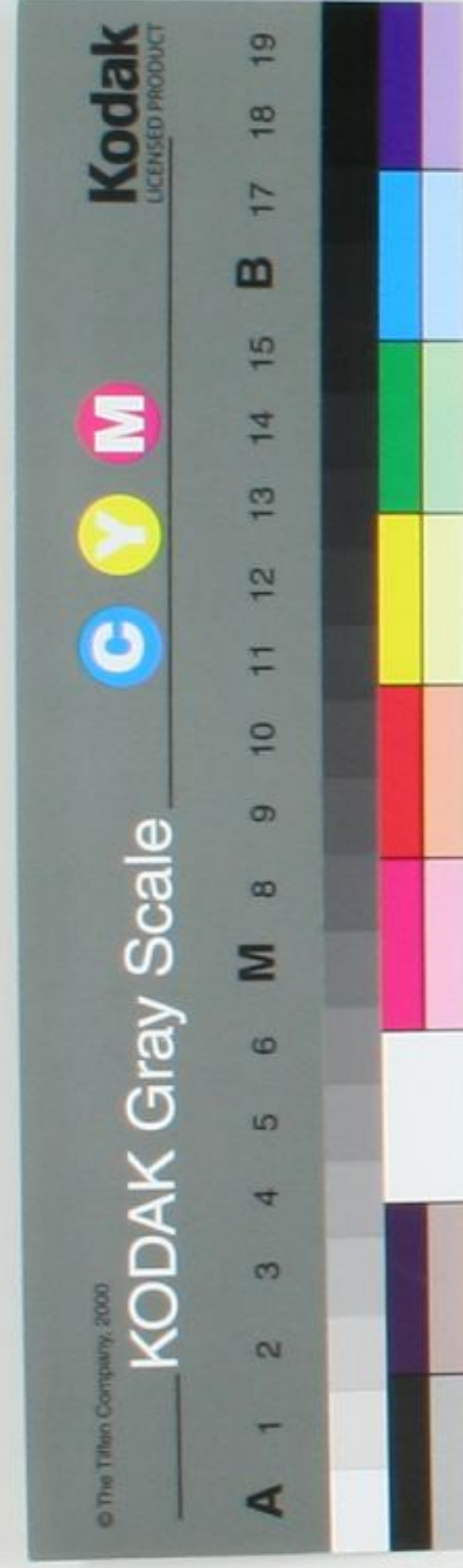
57
1882

Handwritten Japanese text in cursive style (sōsho), consisting of approximately 15 vertical columns of characters.

Handwritten Japanese text, possibly a signature or a specific note, located on the left side of the main text block.

Handwritten Japanese text, possibly a signature or a specific note, located on the far left side of the page.

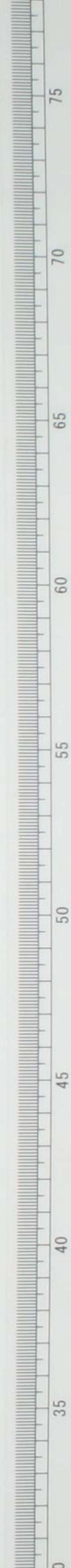


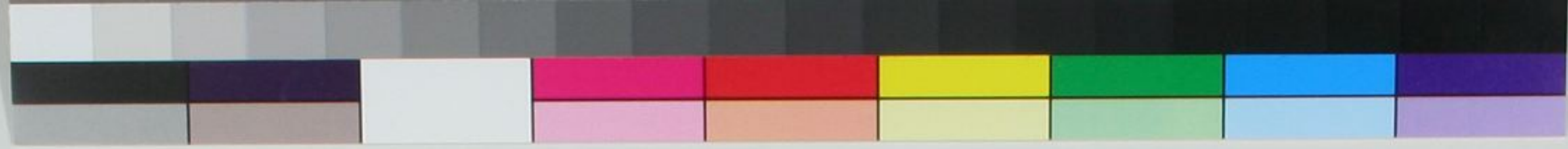


北村

松の尾流しきもあつ
つるまゝの
松の尾流しきもあつ
仲全殿をうけ送りて小督れ殿を
御まゝの縁成えそ送りてあつ

5/15
2/15
(15)





15361
3PA2
2745

臨

石屋
天祿

石

善

乃

花

精

善

着

白色

米

善
婉
郭郭

大

南

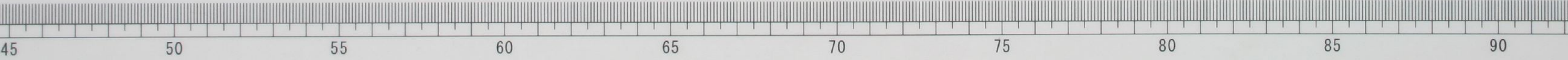
婉
善

臨

善
眼

車

善





Handwritten Japanese text in cursive (sōsho) style, arranged in vertical columns from right to left. The text is written on aged, yellowish paper. The characters are fluid and connected, typical of the cursive style. The columns contain approximately 15-20 characters each, with some variations in line length and spacing. The overall appearance is that of a traditional Japanese calligraphic work, possibly a letter or a short piece of poetry.

