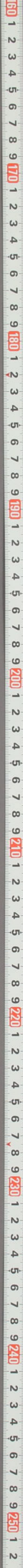


Handwritten Chinese characters in cursive script on a piece of aged, yellowish paper. The characters are arranged in vertical columns. Two red square seals are stamped on the paper, one above the other, containing characters in seal script.





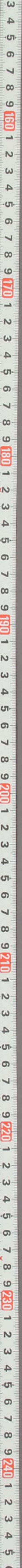




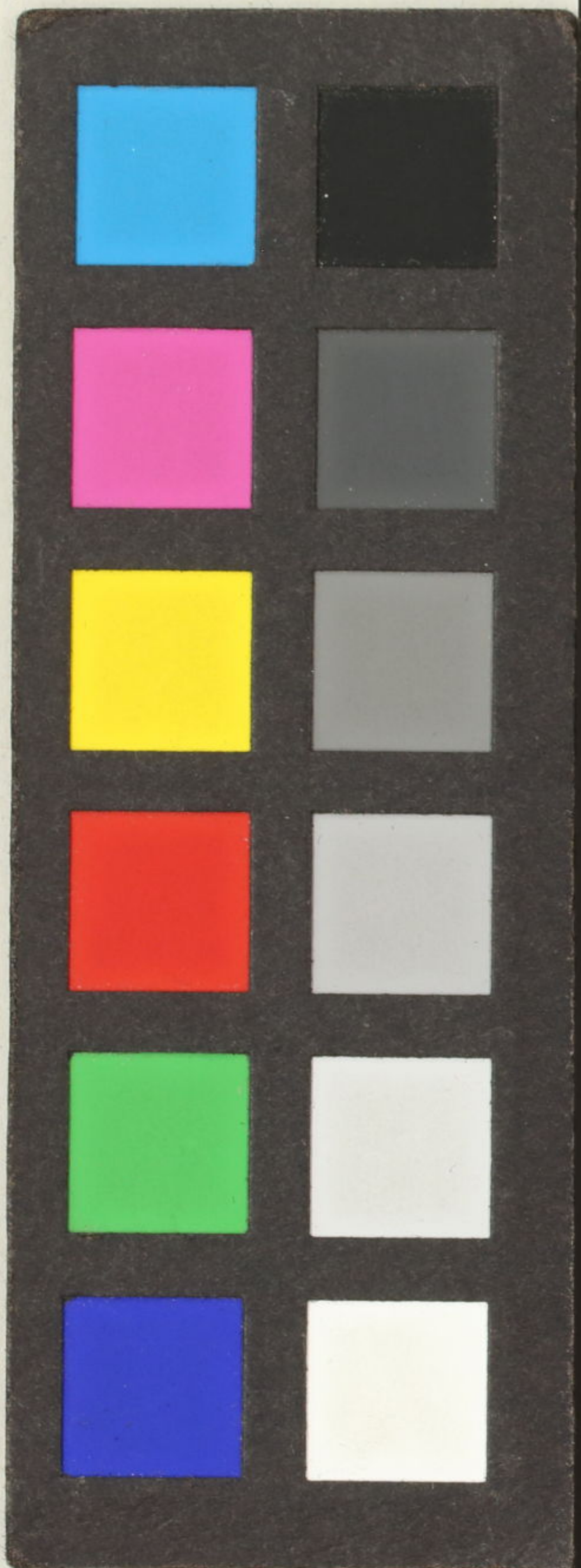


瀧澤馬琴義太夫節傳

特別  
子 II  
4806







瀧澤馬琴  
義太夫節傳

貴 長軸

特別

子 11

4806

