







4  
5  
6  
7  
8  
9  
70  
1  
2  
3





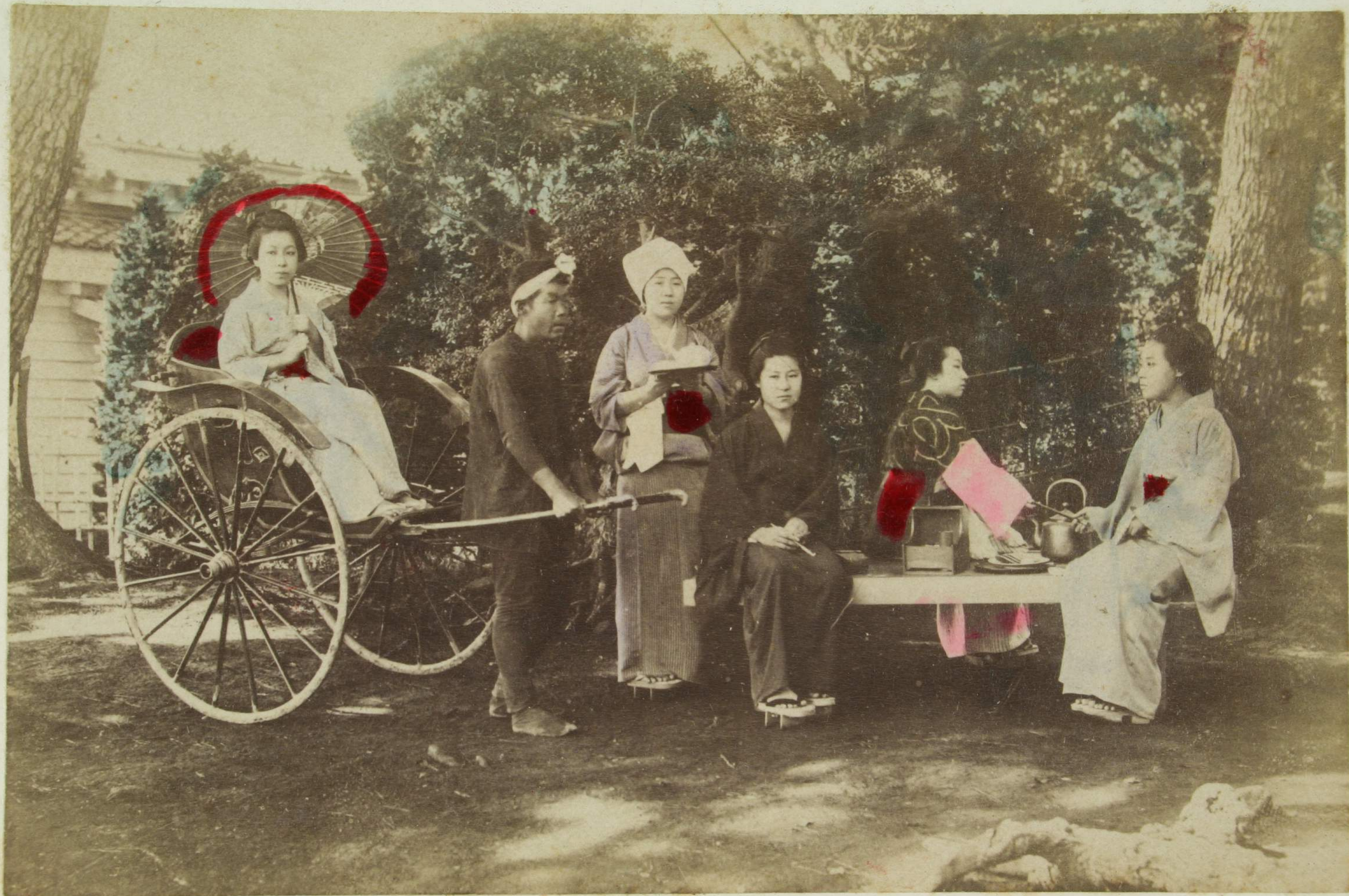






SHIJOGAWARA KIOTO





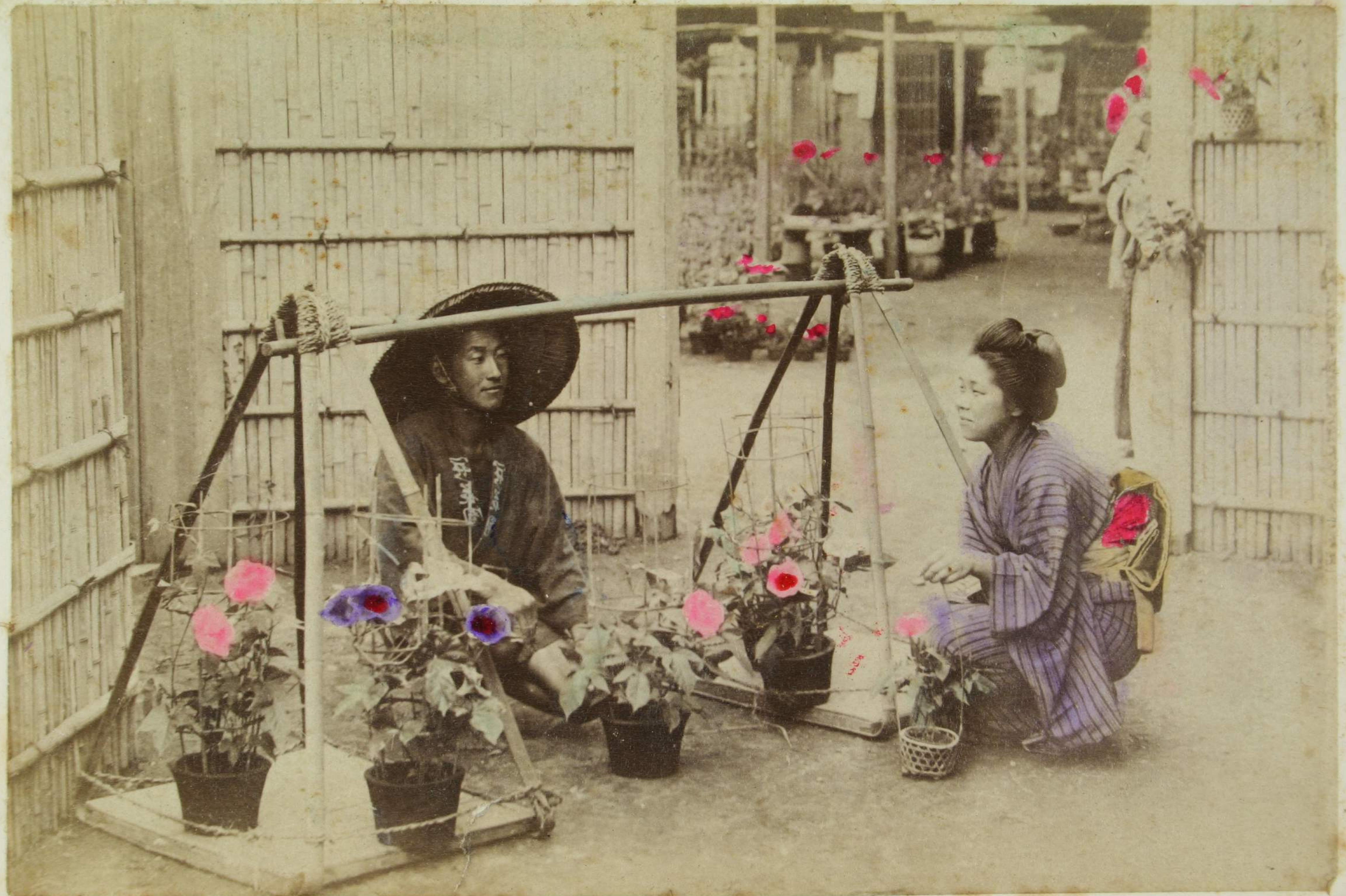




























No. 9. YOKOHAMA

















A. 43. OVERTURN BIKISHA













































55

60

65

70

75

80

85

90

95





55

60

65

70

75

80

85

90

95



49  
5497



<2003-028 >



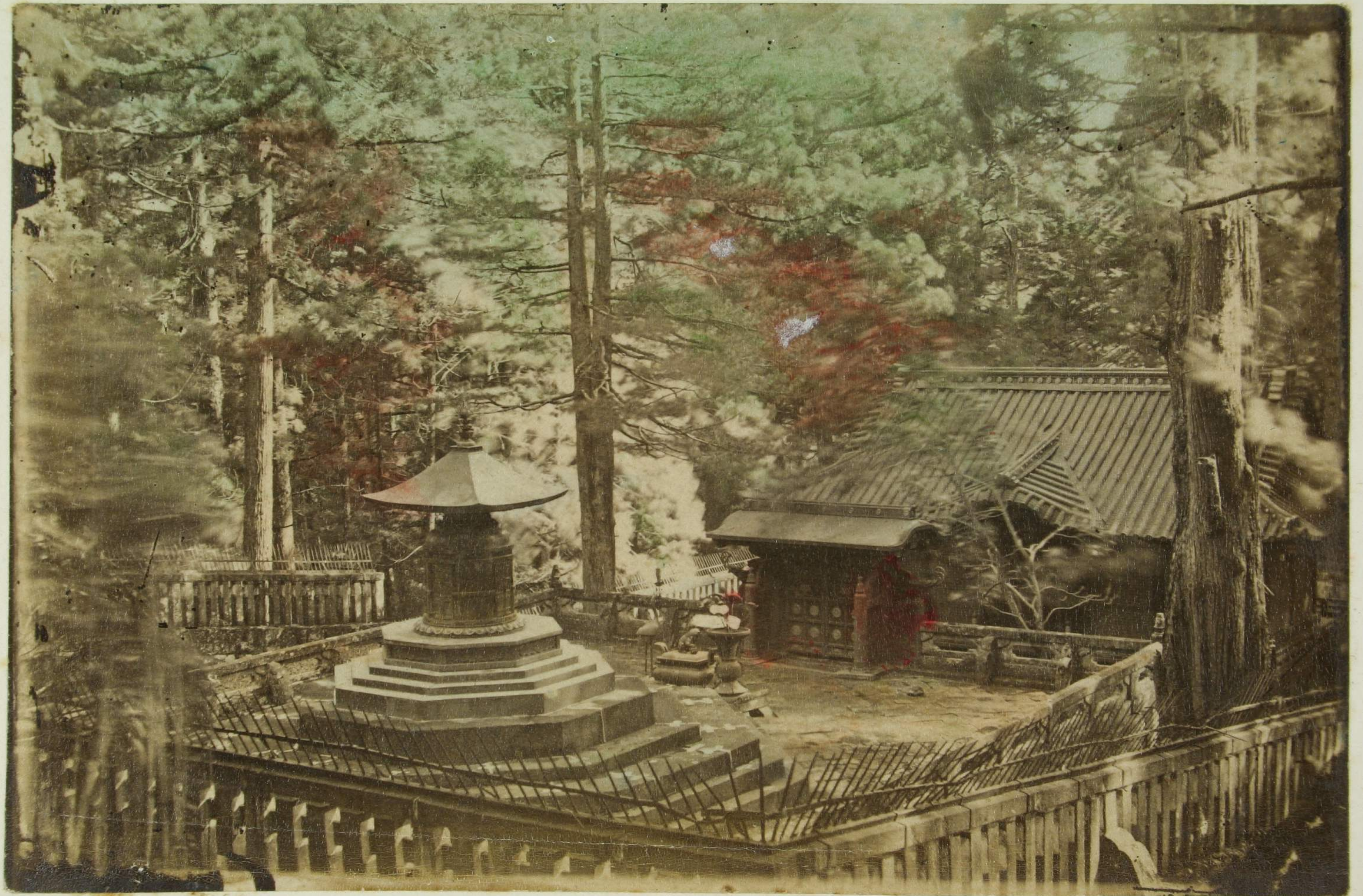
SGRD BRIDGE AT NIKKO





SGRD BRIDGE AT NIKKO















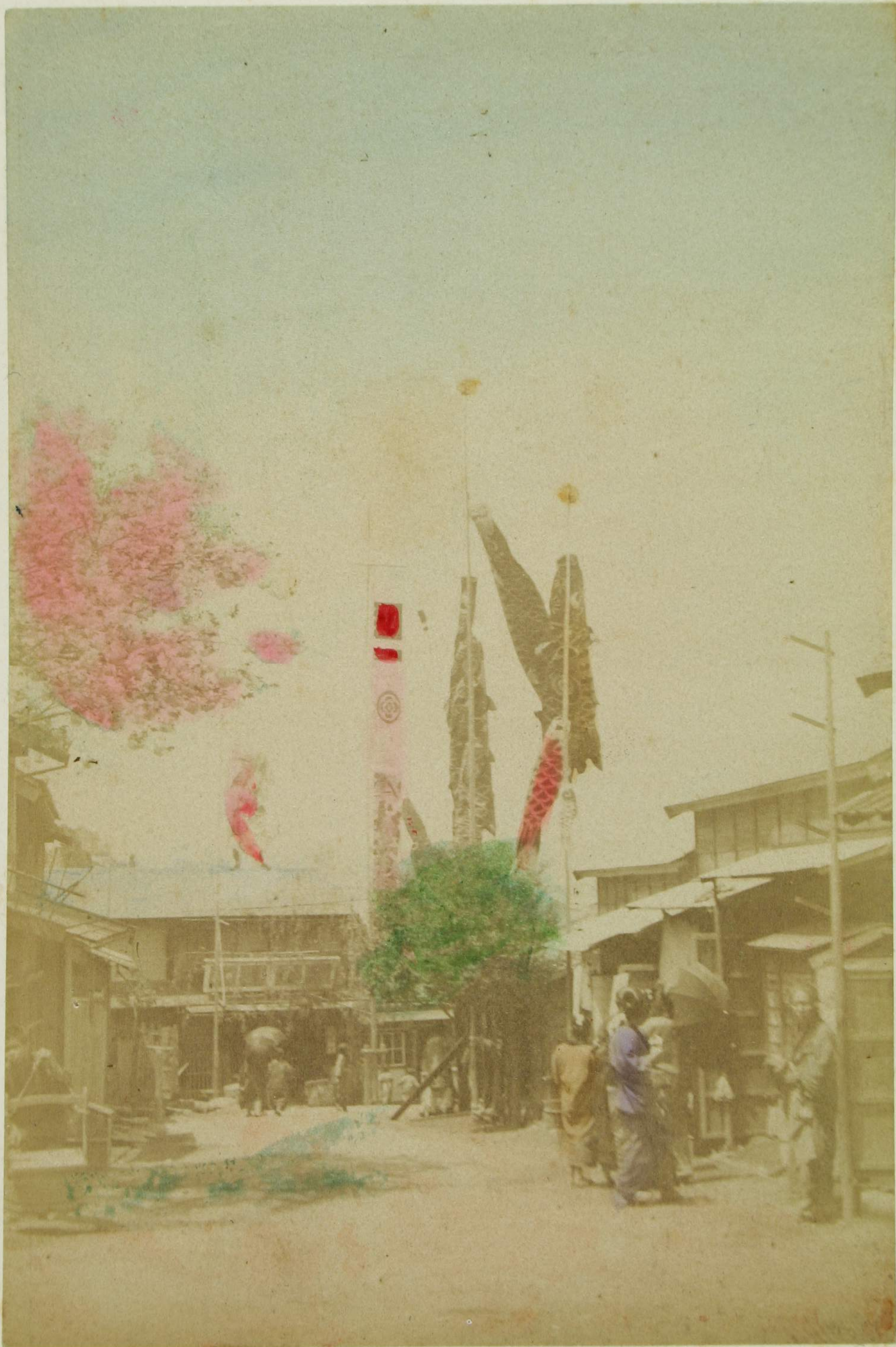


A. 293 IRIS GARDEN IN HORIKIRI, TOKYO.

















YOKOHAMA AT BORDO





GORANDO HOTEL













FUJIYAMA









DOGASHIMA WATER FALL HAKONE





KINKAKUJI, KIOTO





950 SARUSAWA AT NARA.















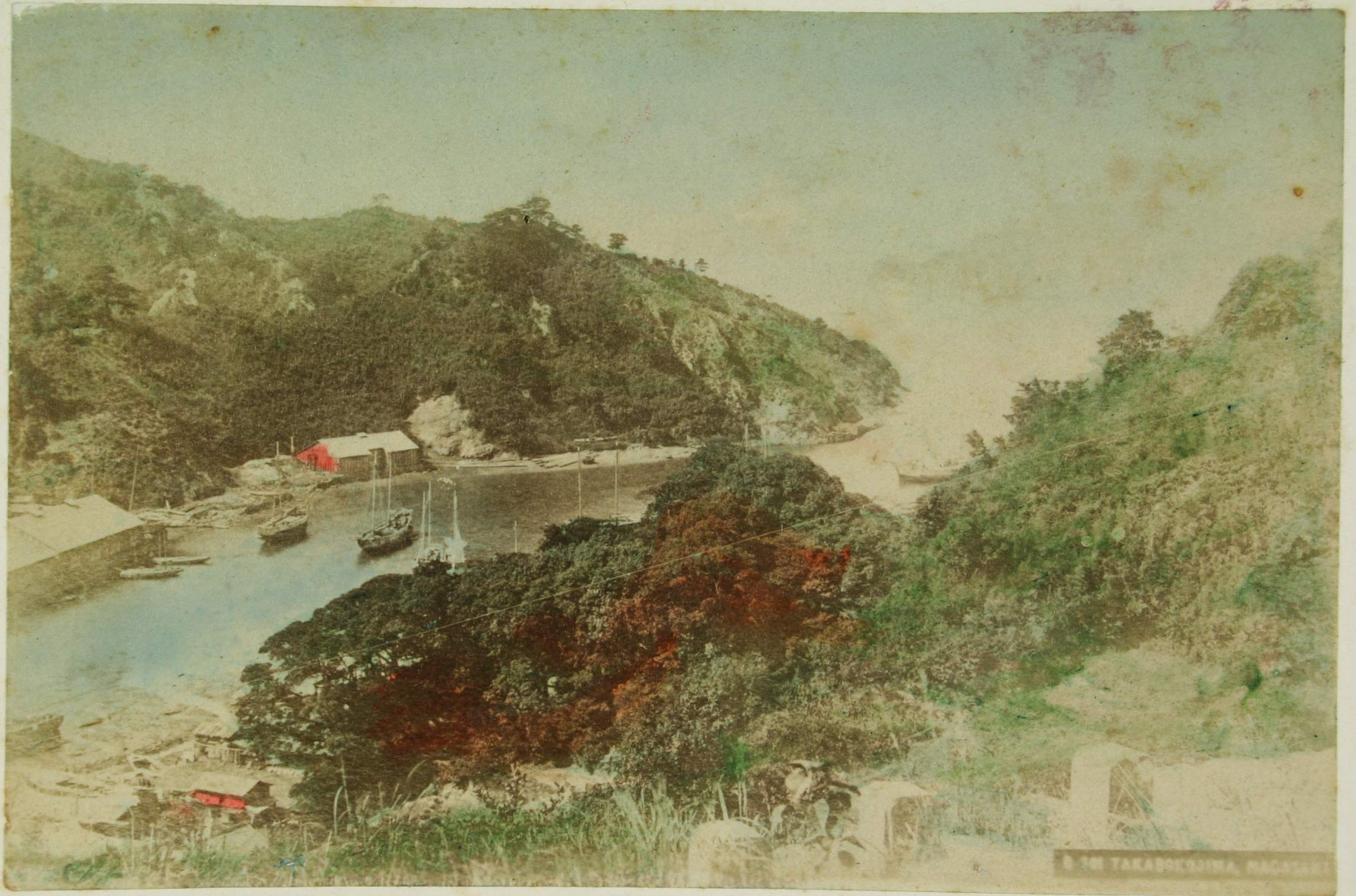






B 220 NAKAJIMA HAKAZAKI





THE VILLAGE OF TAKABISHIMA, JAPAN





B 203 NEZUMIJIMA ENTER OF NAGASAKI





SUWA TEMPLE NAGASAKI





5 203 HIZUMIYAMA ENTER OF NAGASAKI



SUWA TEMPLE NAGASAKI