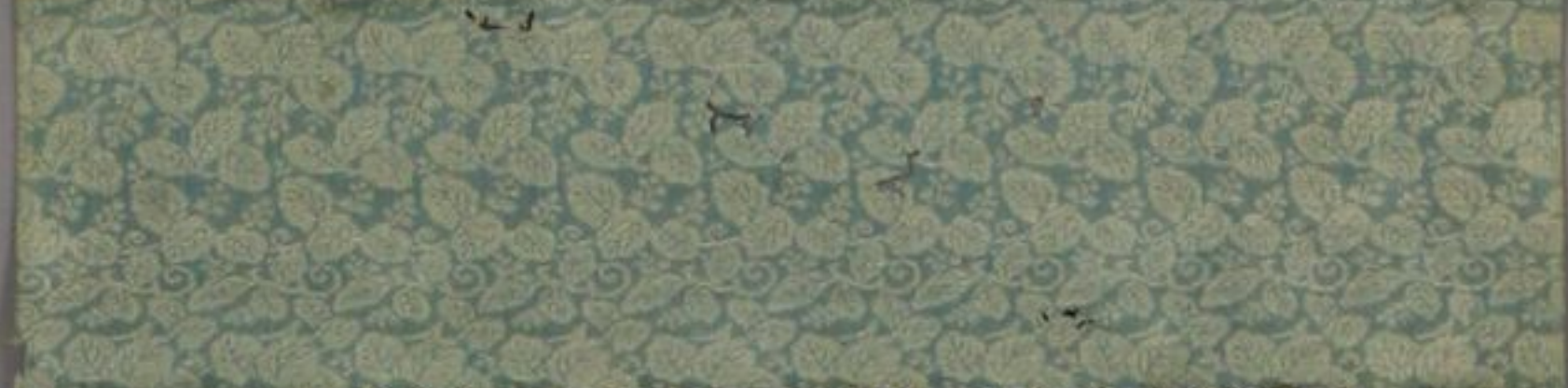




Handwritten text on the top flap of the scroll, including the characters "し" and "て".



Main body of handwritten text in cursive Japanese calligraphy, arranged in vertical columns. The text includes various characters and phrases, such as "経念の", "うた", "つ", "月", and "鳥".



Handwritten text on the bottom flap of the scroll, including the characters "し" and "て".



Handwritten Chinese characters in black ink, including a large character that appears to be '為' (wéi) and a smaller character '之' (zhī), possibly forming the name 'Wéi zhī'.

