



Handwritten characters at the top left, possibly a title or address.

第一  
Handwritten text in the first column of the main body.

第二  
Handwritten text in the second column of the main body.

第三  
Handwritten text in the third column of the main body.

第四  
Handwritten text in the fourth column of the main body.

第五  
Handwritten text in the fifth column of the main body.

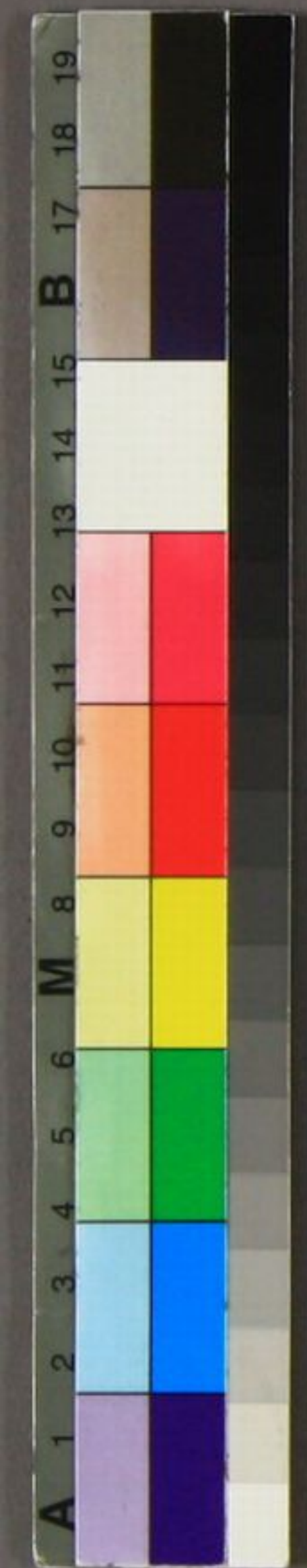
第六  
Handwritten text in the sixth column of the main body.

第七  
Handwritten text in the seventh column of the main body.

第八  
Handwritten text in the eighth column of the main body.

源路權大納言正三位隆貞卿





特別  
子6  
4714



