

嵯峨康樂寺



Handwritten text in cursive script, likely a dedication or record.

Handwritten text in cursive script.

Handwritten text in cursive script.

Handwritten text in cursive script.

Handwritten text in cursive script.

Handwritten text in cursive script.

Handwritten text in cursive script.

Handwritten text in cursive script.

Handwritten text in cursive script.

Handwritten text in cursive script.

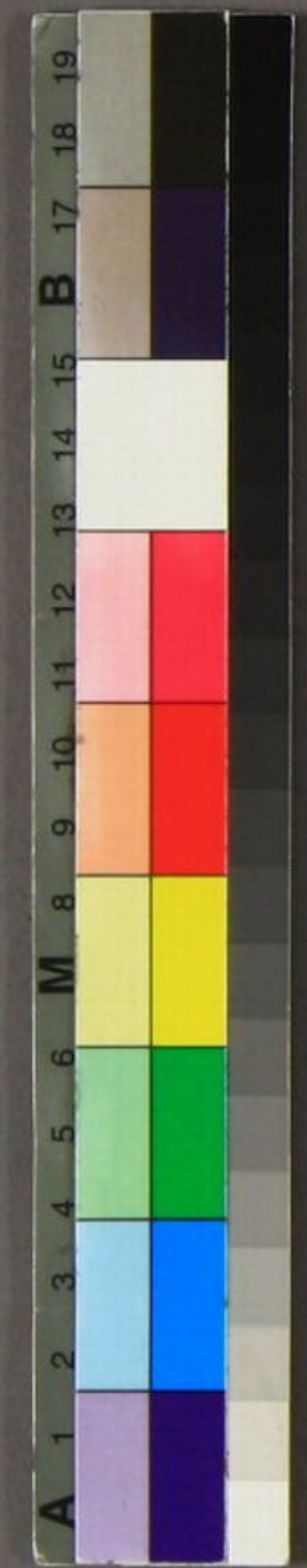
Handwritten text in cursive script.

Handwritten text in cursive script.

Handwritten text in cursive script.

Handwritten text in cursive script.

Handwritten text in cursive script.



特 別  
#6  
4714



