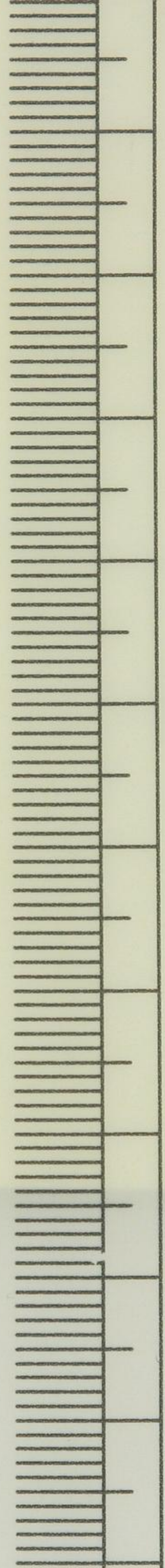
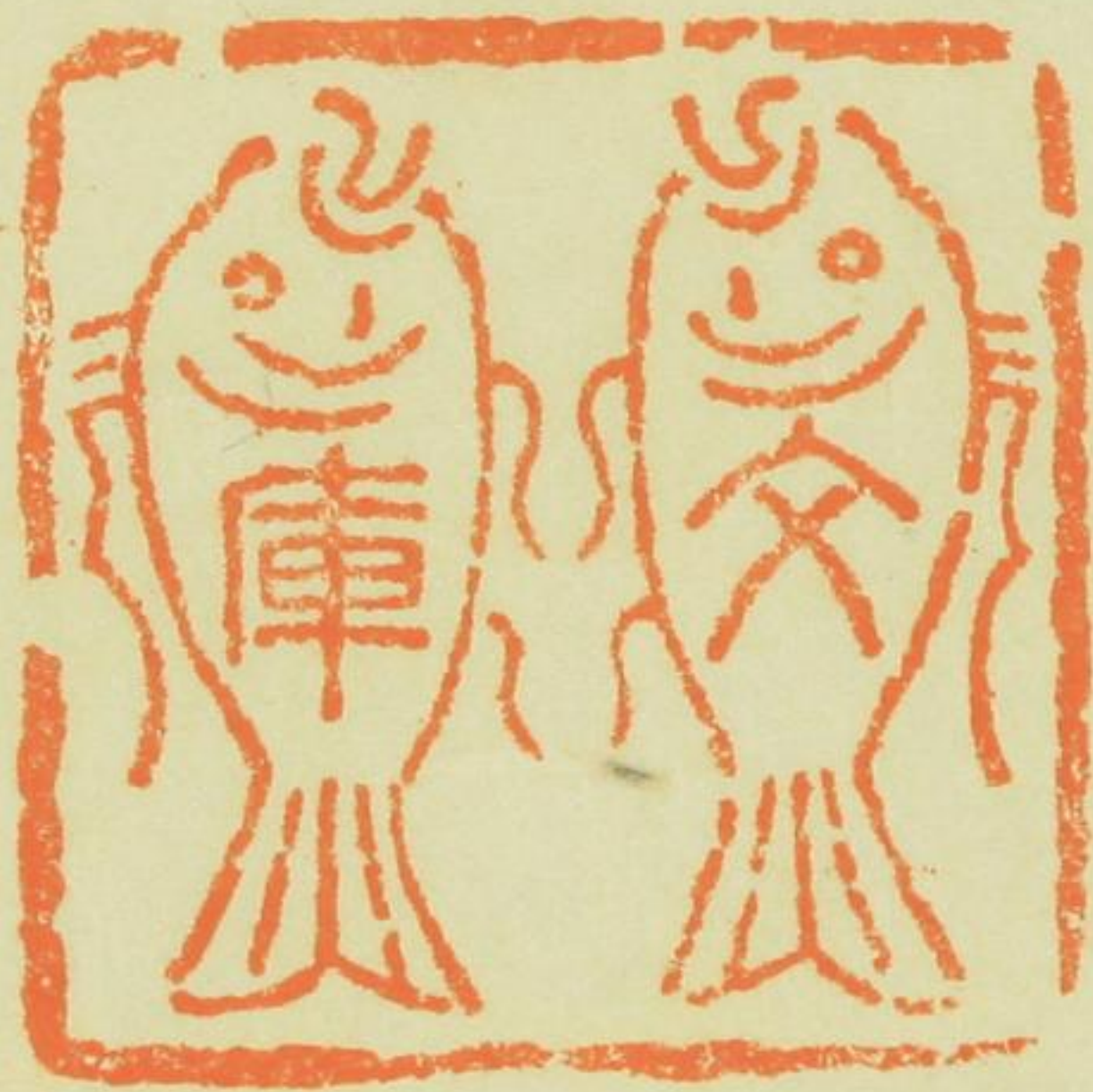
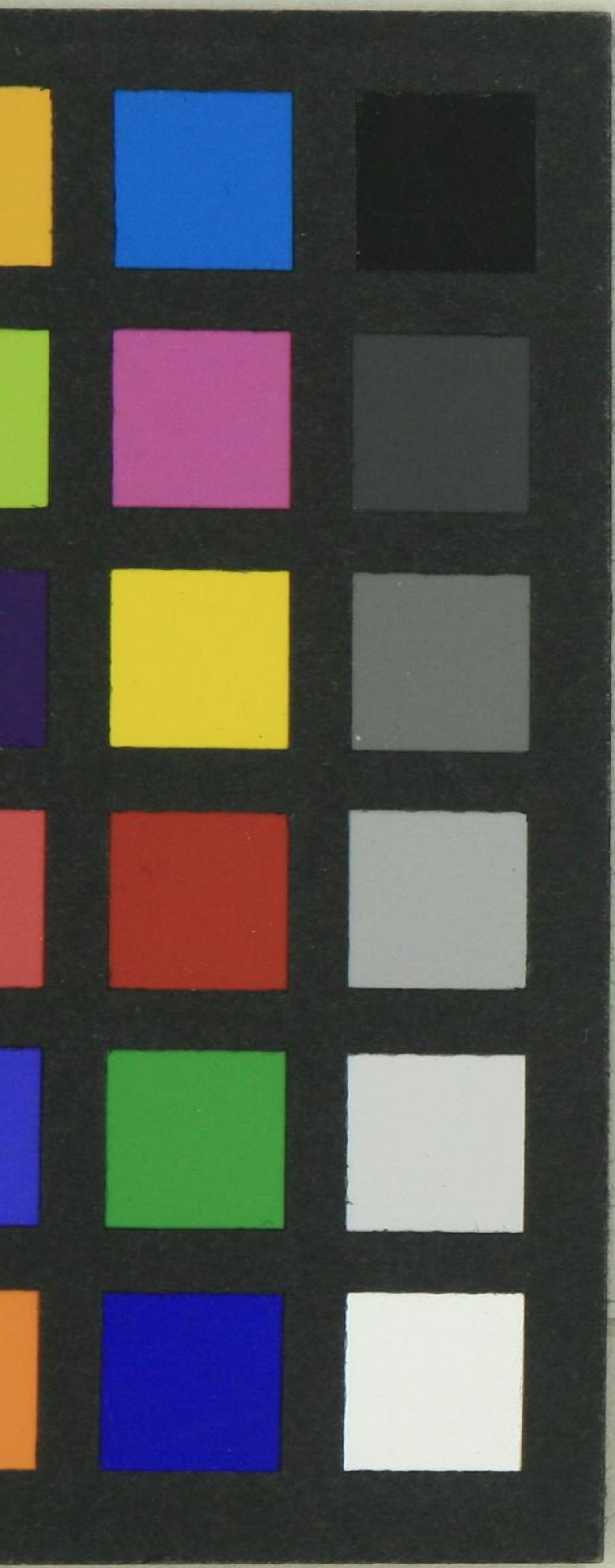




昔年之長...
 此後...
 有...
 以...
 市...
 生...
 人...
 本...
 子...
 心...
 山...



Handwritten Japanese text in cursive style (sōsho). The text is arranged in approximately 16 vertical columns, reading from right to left. The characters are fluid and interconnected, typical of the cursive script. The first column on the right is partially cut off. The text appears to be a continuous passage, possibly a letter or a short story, given the use of personal pronouns and verbs. The paper is aged and slightly yellowed.



75

80

8