



Handwritten Japanese text in cursive style (sōsho). The text is dense and occupies most of the page. It appears to be a formal document or a letter, possibly related to a historical or administrative context. The characters are fluid and interconnected, characteristic of the cursive hand.

世にまのいふに流

二日月

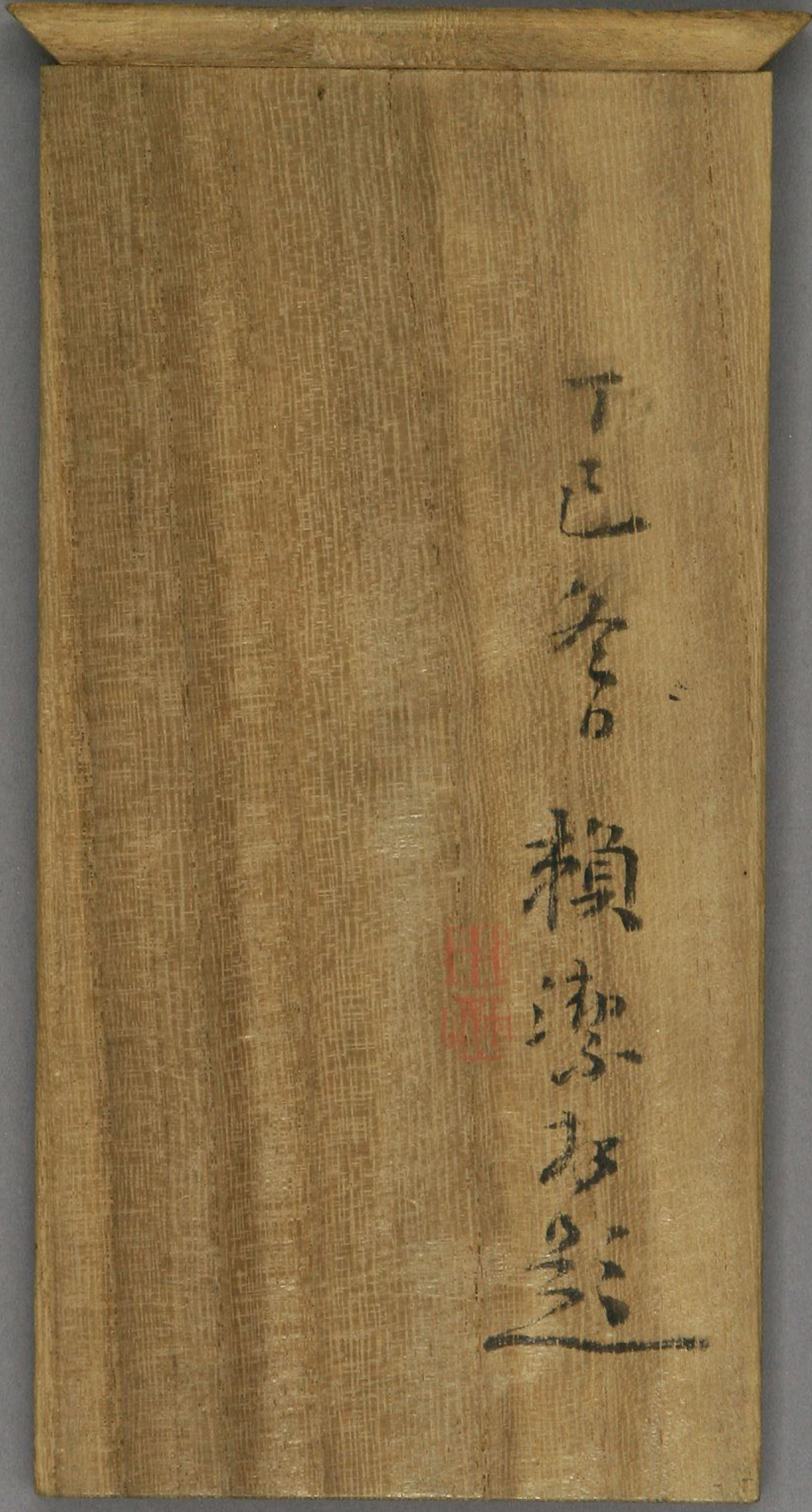
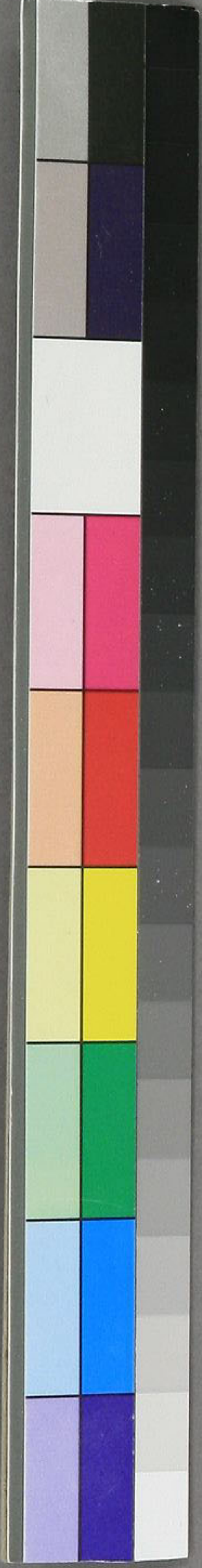
書





山陽翁書翰數十通概
與阪上桐陰者但有二三
署賴或款又次郎弟三
對三郎者為內子梨影
夫人之手書也為札文字
混用和漢之語其辭之
短長聲之小大縱橫
揮洒信筆述自家之
骨節而相思之至情寓
然曲折於箇中令讀者
把玩教回不知倦古云
嬉笑唾罵皆成文信
然矣
丁巳蒲月賴潔謹識
於醉古堂南窓下





丁巳年
 賴染友美

