

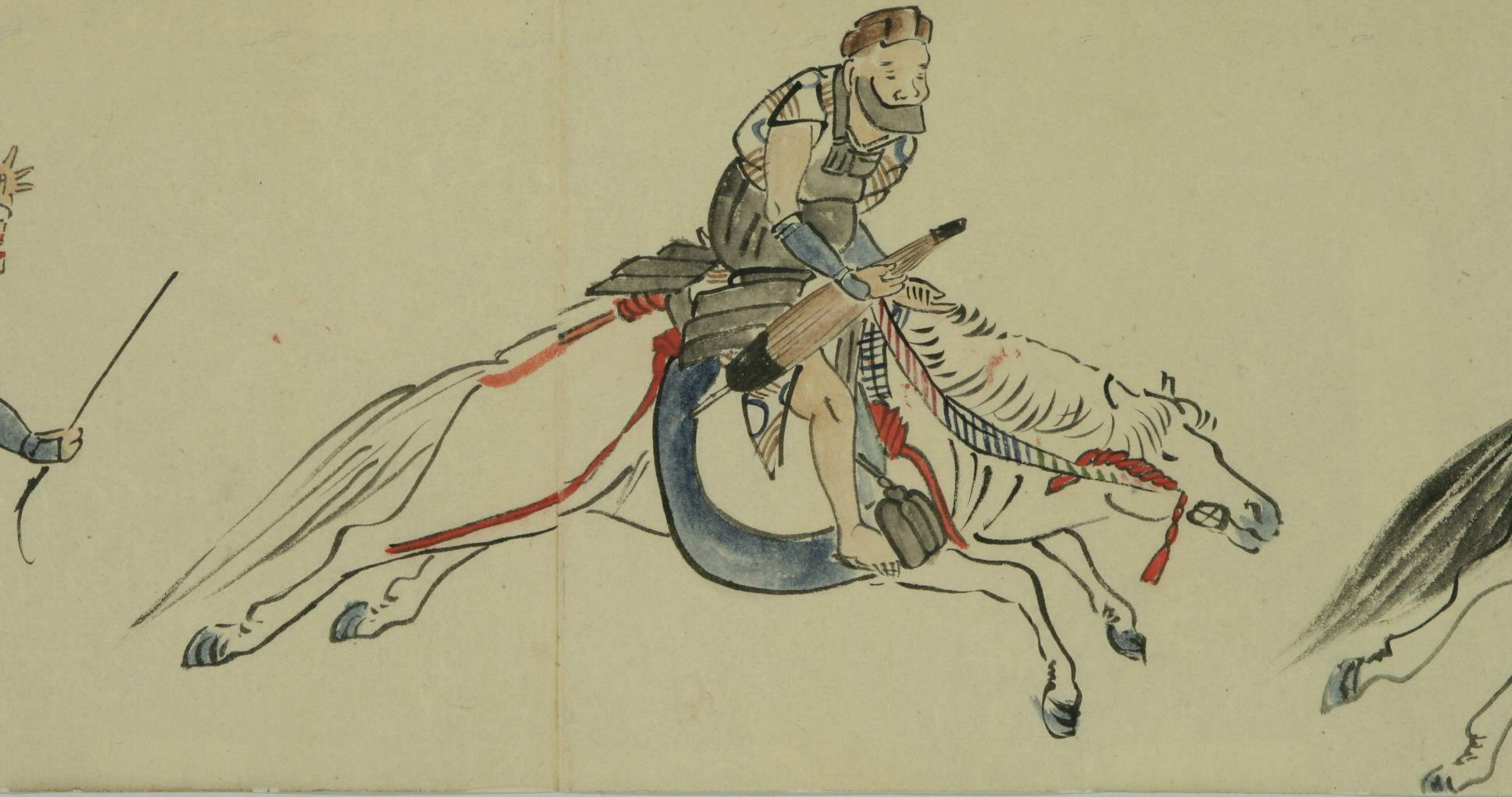






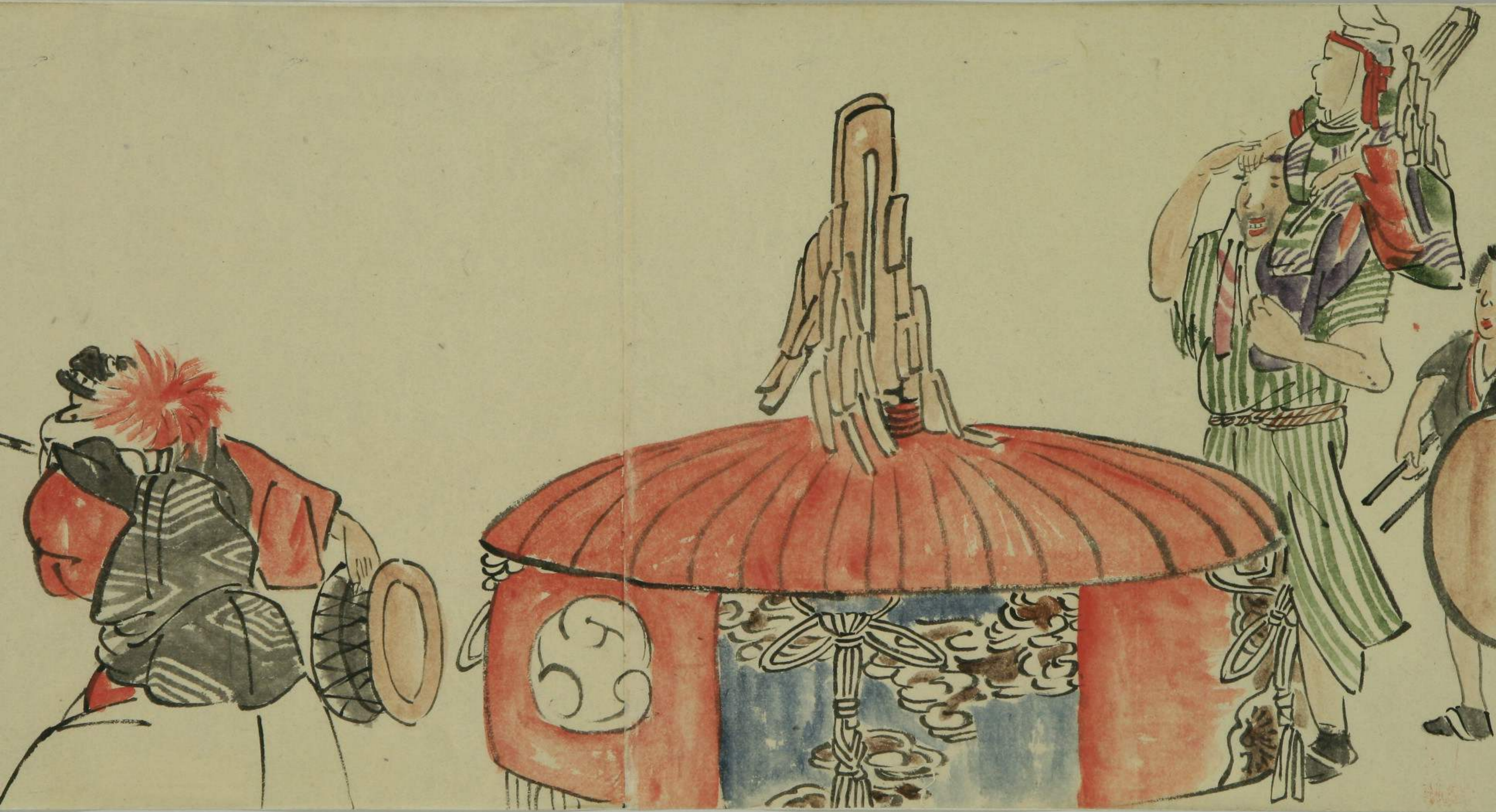


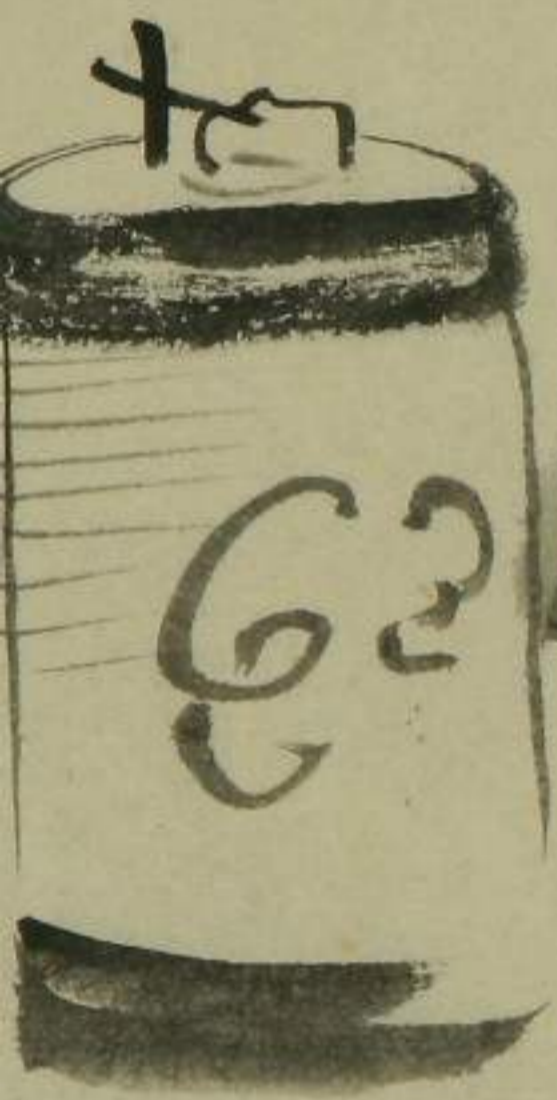
Handwritten text in a cursive script, likely Persian or Arabic, located above the figure on the right side of the page.















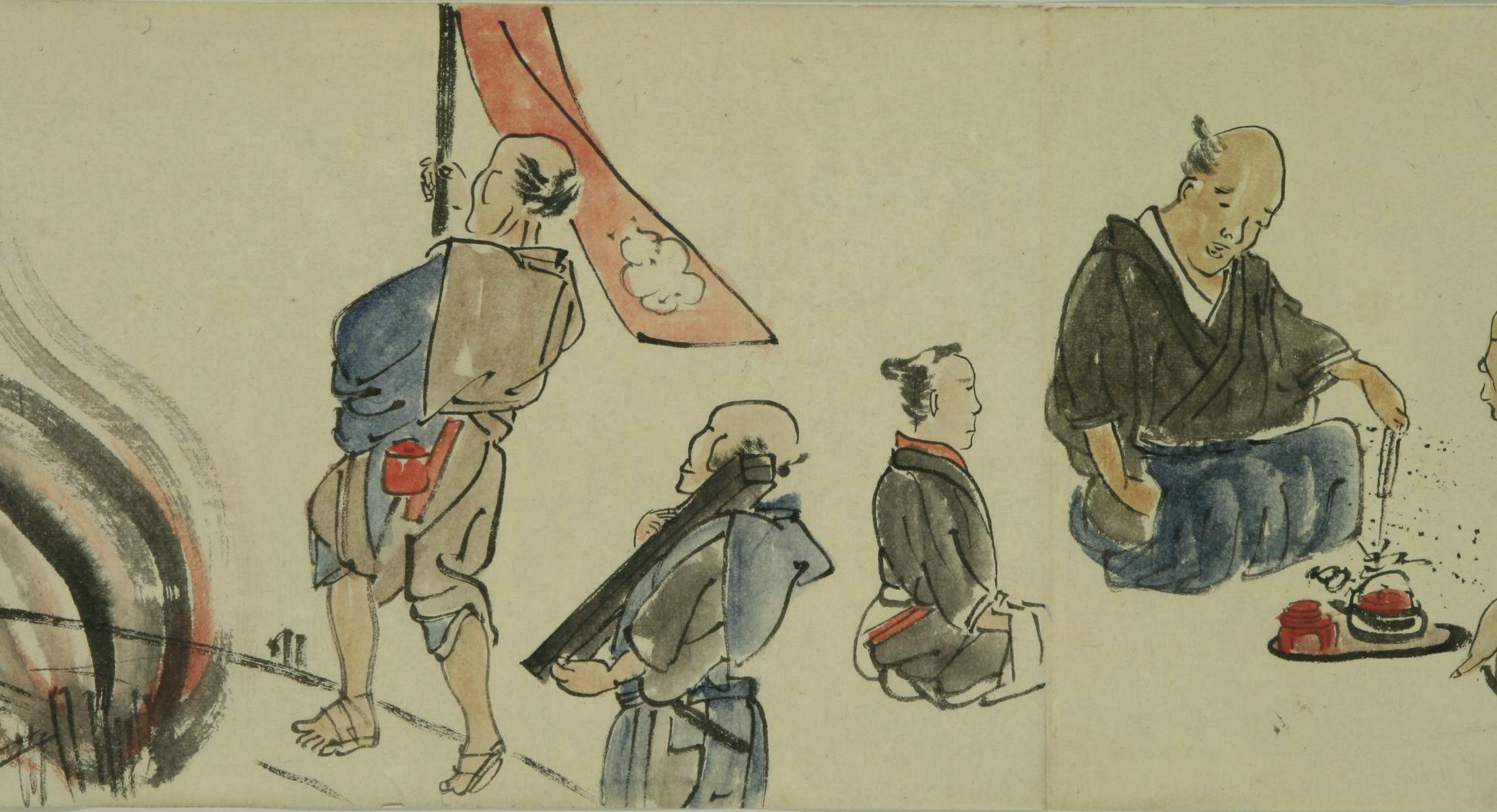




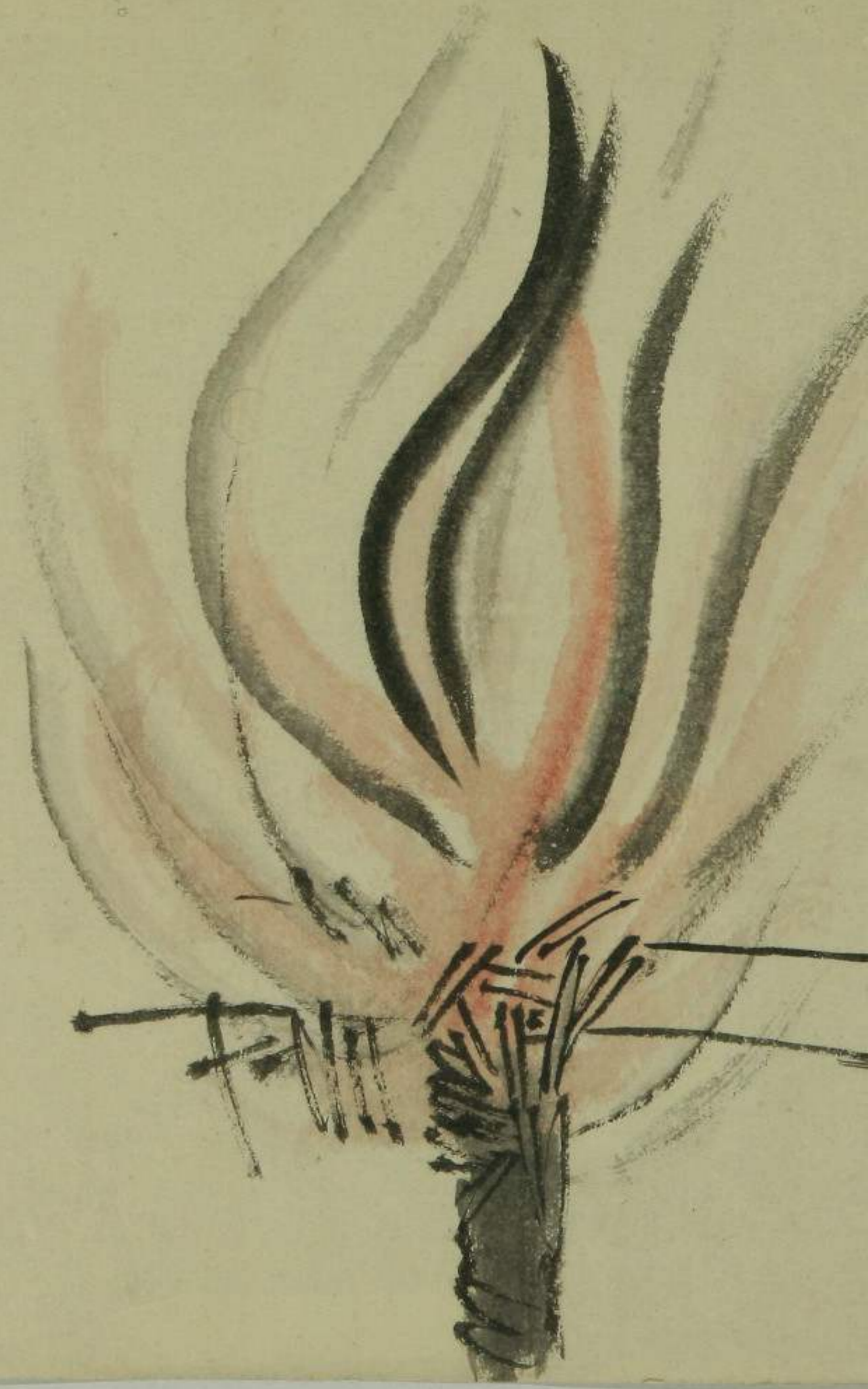




















雲鳳凰丸



三葉牡丹





鮮牡丹



牡丹



牡丹



雲鳳凰丸





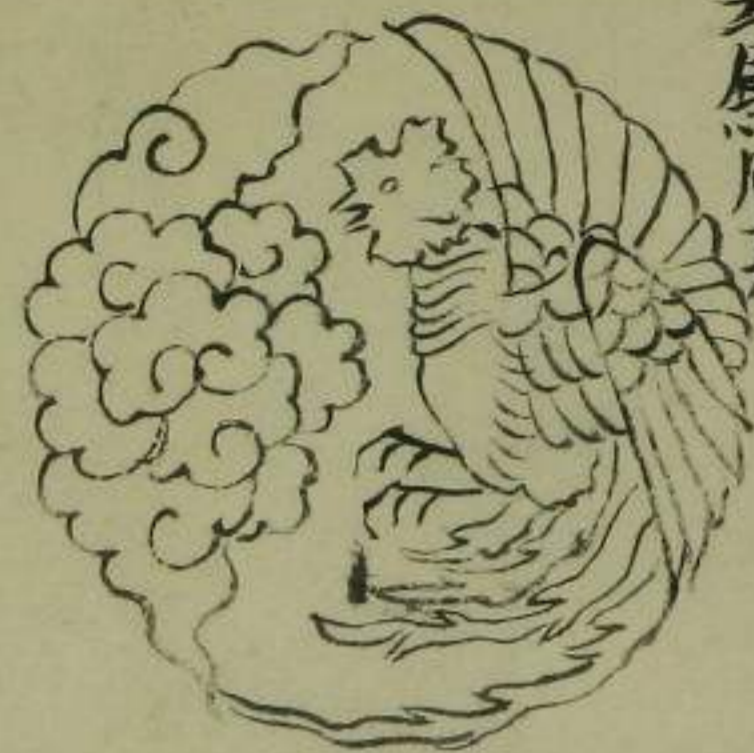
解の牡丹



三牡丹



三牡丹



雲鳳凰丸



慶

慶

慶

慶應四年五月

寫之

東南寫





慶

慶

慶

慶應四年五月
寫之

東海守

