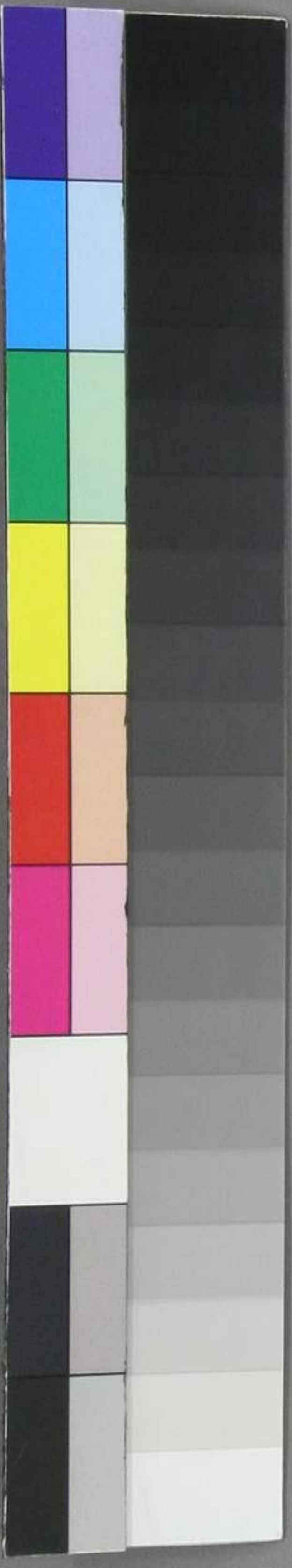


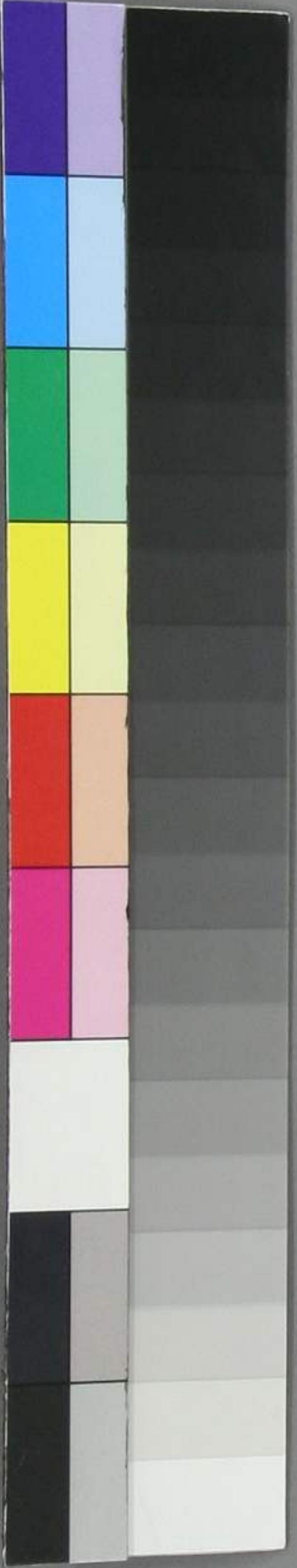
7 8 9 40 1 2 3 4 5 6 7 8 9 50 1 2 3 4 5 6 7 8 9 60 1 2 3 4 5 6 7 8 9 70 1 2 3 4 5 6 7 8 9

九重乃本
ふたはひのうたふたはひのうたふたはひのうた



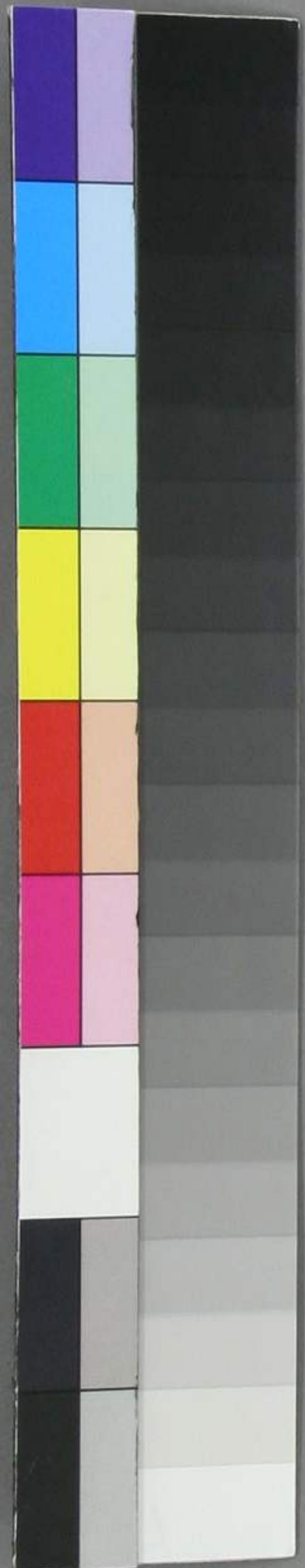
梅

此梅乃昔年所植也
其花之香如梅之香



7 8 9 40 1 2 3 4 5 6 7 8 9 50 1 2 3 4 5 6 7 8 9 60 1 2 3 4 5 6 7 8 9 70 1 2 3 4 5 6 7 8 9

Handwritten text in two columns on aged paper. The right column contains approximately 12 lines of cursive script, and the left column contains approximately 10 lines. The script is dense and characteristic of historical East Asian calligraphy.



夕紅紫

松林の老木に夕紅紫の
夕紅紫の老木に松林

