

而晴山岳欲雲海
連一石浮帆
如子
中
天

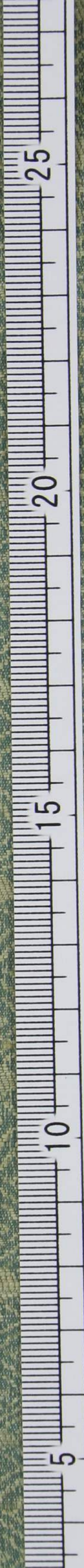
徐如意製



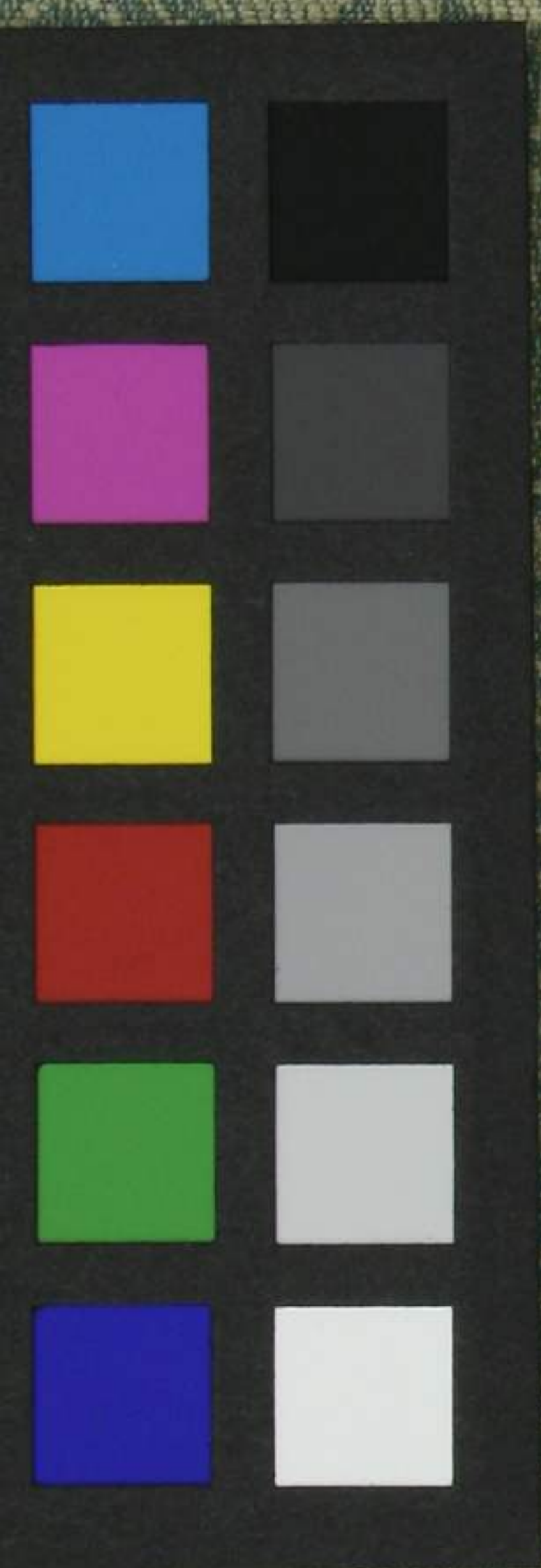
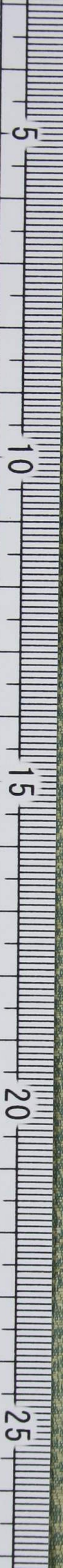


Large calligraphic characters in black ink on a light-colored paper background. The characters are written in a bold, expressive style. The first character is a large, rounded '一' (one), followed by a character that appears to be '十' (ten), and then a character that looks like '七' (seven). To the right of the main characters is a red square seal impression with the characters '張氏' (Zhang family name) in seal script.

張氏



裂光



菊池淡如七十一句

雨晴山岳飲雲煙

