

千載聖文方多生伏劍經液五筆經松

孝聖聖聖聖聖聖聖聖聖聖聖聖聖聖聖聖聖

崇寧四年歲在辛亥初秋

文里疏



Handwritten Chinese characters in black ink on aged paper. The characters are written in a cursive style. The top character is a large, bold stroke, possibly '一' (one). Below it are several other characters, including what appears to be '十' (ten) and '二' (two). The ink is thick and expressive, with visible brushwork.



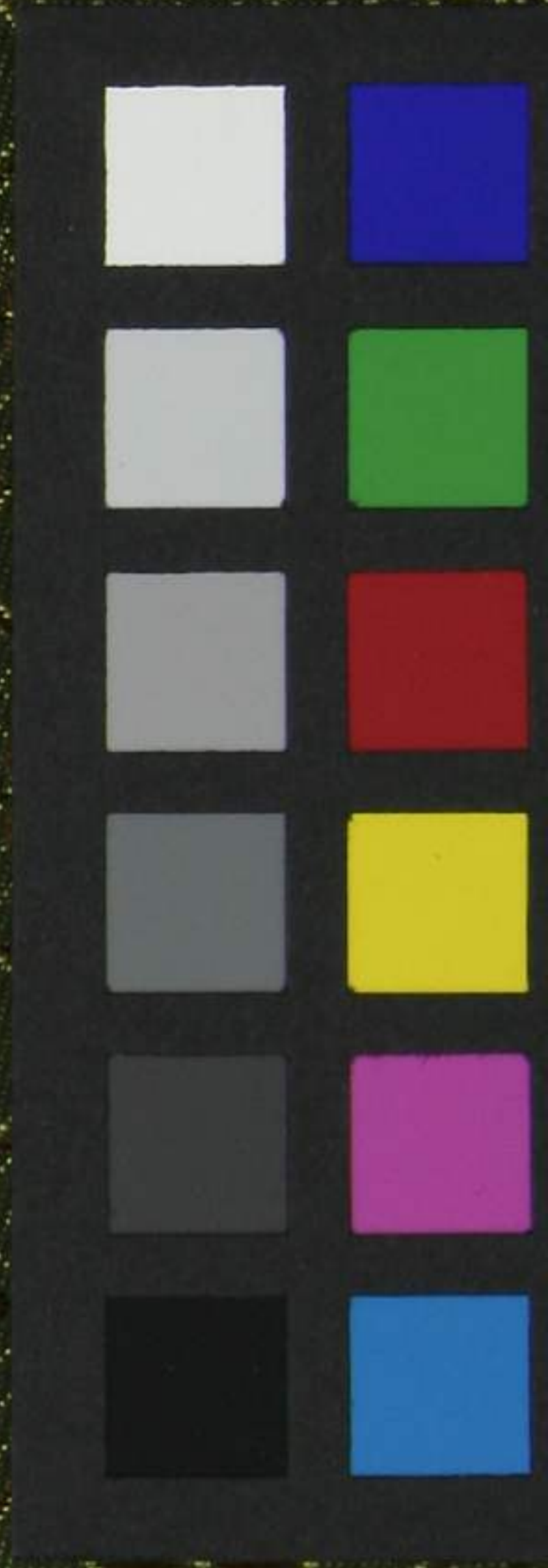
25

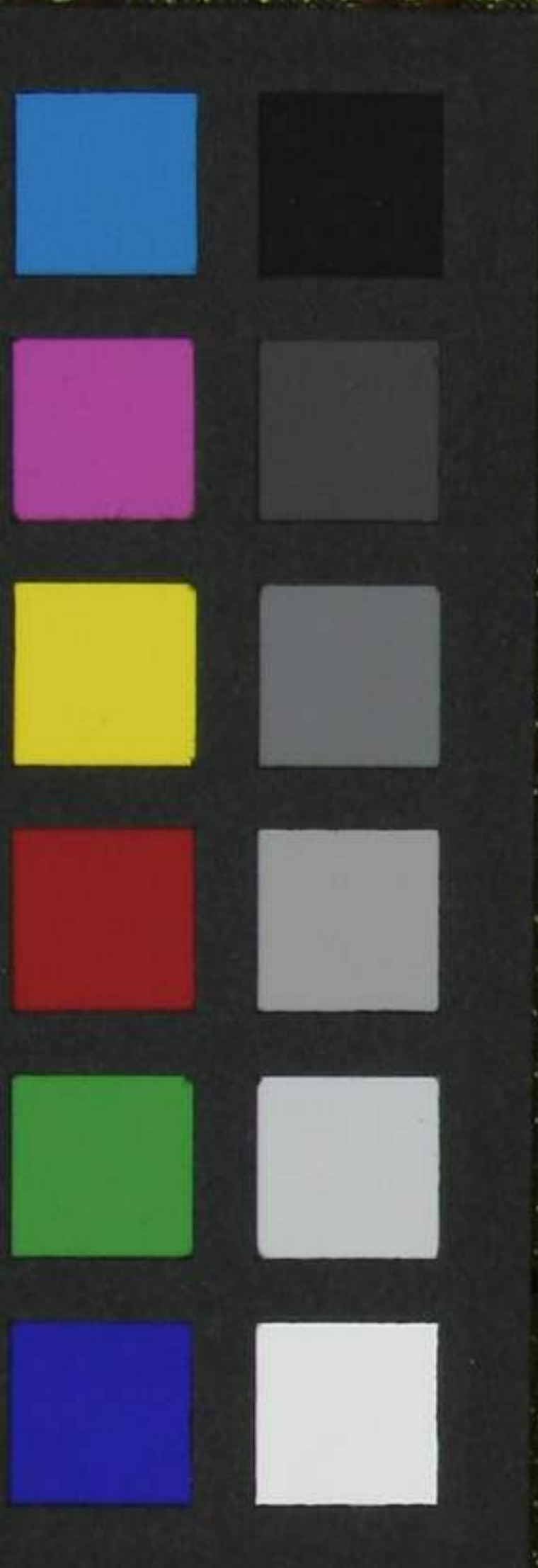
20

15

10

5





天
天

天



天