

上

あぶらごえ 色か

柳

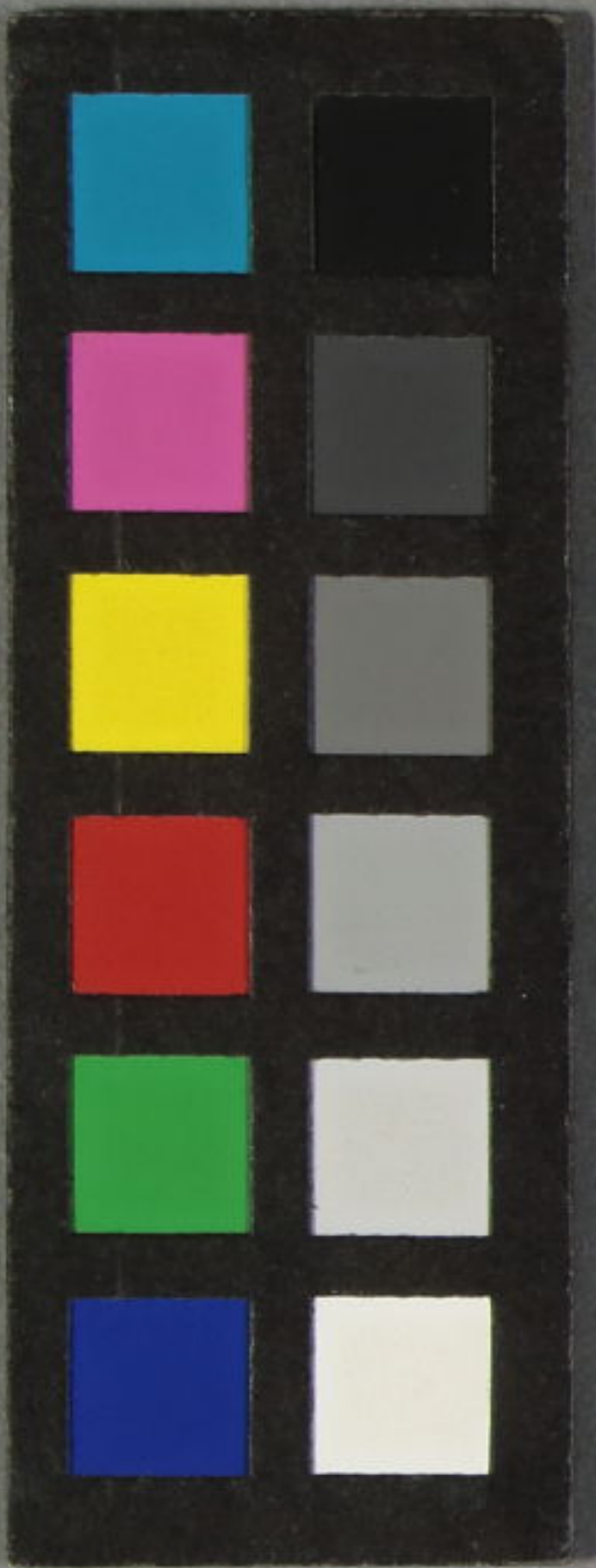
箕原松峠女盗賊



あぶらごえ 再板

馬喰町三町目

吉田屋小吉





Handwritten text in a cursive script, likely a form of shorthand or a specific dialect. The text is arranged in approximately 10 horizontal lines across the page.

Handwritten text in a cursive script, continuing from the previous page. The text is arranged in approximately 10 horizontal lines across the page.

Handwritten text in a cursive script, likely a historical document or manuscript. The text is written in a dark ink on aged, yellowish paper. It consists of approximately 12 lines of text, starting from the top right and moving downwards. The script is dense and characteristic of early modern European handwriting.

Handwritten text in a cursive script, continuing from the previous page. The text is written in a dark ink on aged, yellowish paper. It consists of approximately 12 lines of text, starting from the top right and moving downwards. The script is dense and characteristic of early modern European handwriting.







Handwritten text in a cursive script, likely a historical document or manuscript. The text is written in a dark ink on aged, slightly yellowed paper. It consists of approximately 12 lines of text, starting with a large initial letter 'U' and ending with a large 'K'. The script is dense and characteristic of early modern European handwriting.

Handwritten text in a cursive script, continuing from the previous page. The text is written in a dark ink on aged, slightly yellowed paper. It consists of approximately 12 lines of text, starting with a large initial letter 'W' and ending with a large 'K'. The script is dense and characteristic of early modern European handwriting.



