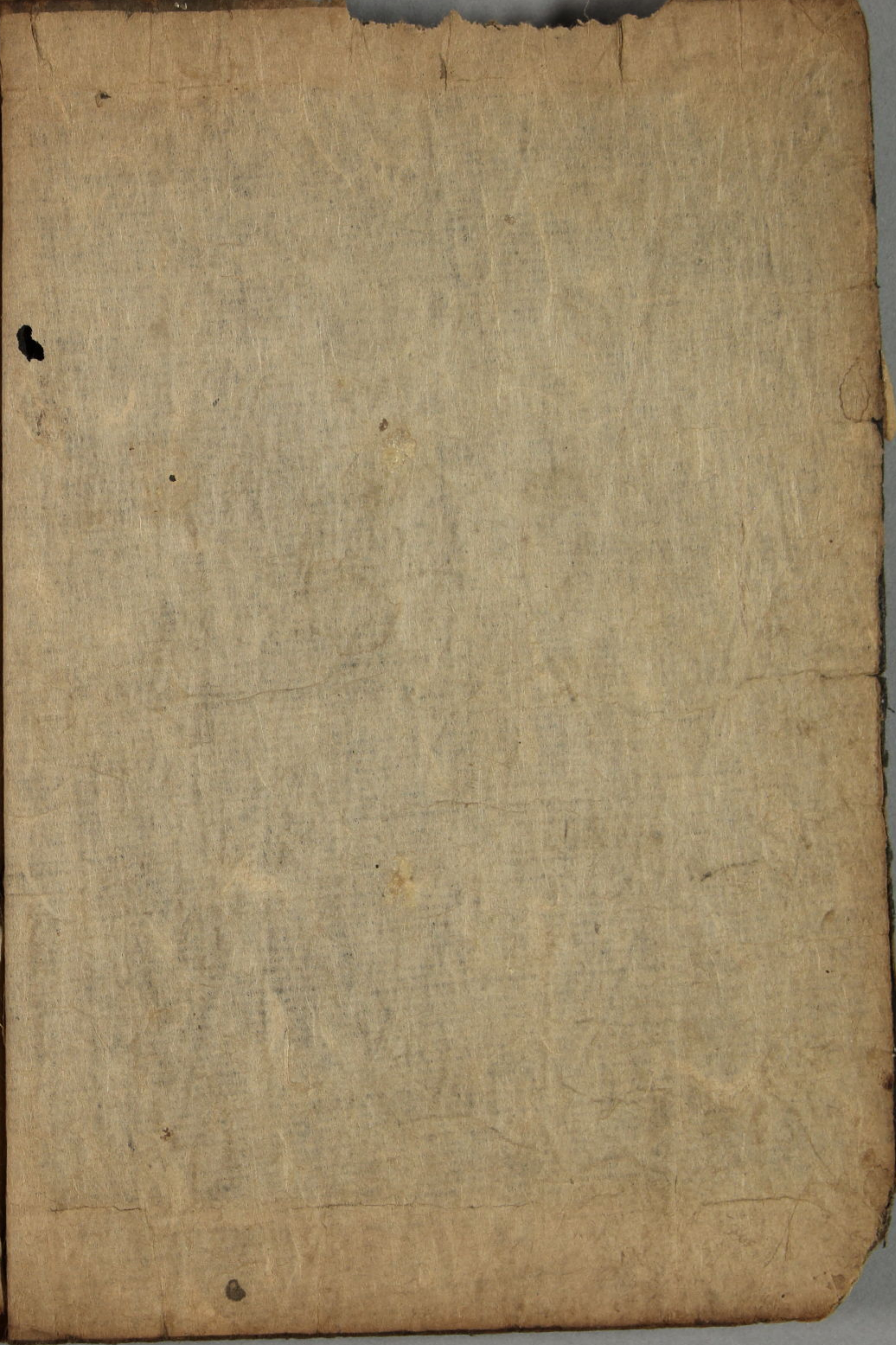


序の

一谷嫩軍記

唐本豊前館野原

徳川幕府の勅令に依りて、一谷嫩軍記の全文を
この本に採りて、其の略を録す。一谷嫩軍記の
略、其の略を録す。一谷嫩軍記の略、其の略を録す。
一谷嫩軍記の略、其の略を録す。一谷嫩軍記の略、
其の略を録す。一谷嫩軍記の略、其の略を録す。
一谷嫩軍記の略、其の略を録す。一谷嫩軍記の略、
其の略を録す。一谷嫩軍記の略、其の略を録す。
一谷嫩軍記の略、其の略を録す。一谷嫩軍記の略、
其の略を録す。一谷嫩軍記の略、其の略を録す。
一谷嫩軍記の略、其の略を録す。一谷嫩軍記の略、
其の略を録す。一谷嫩軍記の略、其の略を録す。



Handwritten text in a cursive script, likely a historical document or manuscript. The text is written on aged, yellowed paper and covers the entire page.

167

Handwritten text in a cursive script, likely a historical document or manuscript. The text is written on aged, yellowed paper and covers the entire page.

Handwritten text in a cursive script, likely a medieval manuscript. The text is written in dark ink on aged, yellowish parchment. It consists of approximately 15 lines of text, with some lines starting with large, decorated initials. The script is dense and characteristic of the late Gothic or early modern period.

Handwritten text in a cursive script, likely a medieval manuscript. The text is written in dark ink on aged, yellowish parchment. It consists of approximately 15 lines of text, with some lines starting with large, decorated initials. The script is dense and characteristic of the late Gothic or early modern period.

Handwritten text in a cursive script, likely a historical document or manuscript. The text is written in dark ink on aged, yellowish paper. It consists of approximately 15 lines of dense, flowing script. There are several small red and blue ink marks scattered throughout the text, possibly indicating corrections or specific points of interest. The script is highly stylized and difficult to decipher without a key.

121

Handwritten text in a cursive script, continuing from the previous page. The text is written in dark ink on aged, yellowish paper. It consists of approximately 15 lines of dense, flowing script. There are several small red and blue ink marks scattered throughout the text, possibly indicating corrections or specific points of interest. The script is highly stylized and difficult to decipher without a key.

Handwritten text in a cursive script, likely a historical document or manuscript. The text is densely packed and covers most of the page.

Handwritten text in a cursive script, continuing from the previous page. The text is densely packed and covers most of the page.

Handwritten text in a cursive script, likely a historical document or manuscript. The text is densely packed and covers most of the page.

15

Handwritten text in a cursive script, continuing from the previous page. The text is densely packed and covers most of the page.

Handwritten text in a cursive script, likely a historical document or manuscript. The text is densely packed and covers most of the page.

Handwritten text in a cursive script, likely a historical document or manuscript. The text is densely packed and covers most of the page.

Handwritten text in a cursive script, likely a historical document or manuscript. The text is written in a dark ink on aged, yellowish paper. It consists of approximately 15 lines of dense, flowing characters, characteristic of a historical cursive style. The script is highly stylized and difficult to decipher without specialized knowledge of the language and script.

Handwritten text in a cursive script, likely a historical document or manuscript. The text is written in a dark ink on aged, yellowish paper. It consists of approximately 15 lines of dense, flowing characters, characteristic of a historical cursive style. The script is highly stylized and difficult to decipher without specialized knowledge of the language and script.

Handwritten text in a cursive script, likely a historical document or manuscript. The text is densely packed and covers most of the page.

Handwritten text in a cursive script, likely a historical document or manuscript. The text is densely packed and covers most of the page.

Handwritten text in a cursive script, likely a historical document or manuscript. The text is densely packed and covers most of the page.

Handwritten text in a cursive script, likely a historical document or manuscript. The text is densely packed and covers most of the page.

夫の如く我が世に於ては、
 一切の事皆は神の御心にて
 成るべし。神は全知全能の
 神なり。神は神にして、
 神なるものなし。神は神
 なるものなし。神は神なる
 ものなし。神は神なるもの
 なし。神は神なるものなし。
 神は神なるものなし。神は
 神なるものなし。神は神なる
 ものなし。神は神なるもの
 なし。神は神なるものなし。
 神は神なるものなし。神は
 神なるものなし。神は神なる
 ものなし。神は神なるもの
 なし。神は神なるものなし。

神は神なるものなし。神は
 神なるものなし。神は神なる
 ものなし。神は神なるもの
 なし。神は神なるものなし。
 神は神なるものなし。神は
 神なるものなし。神は神なる
 ものなし。神は神なるもの
 なし。神は神なるものなし。
 神は神なるものなし。神は
 神なるものなし。神は神なる
 ものなし。神は神なるもの
 なし。神は神なるものなし。
 神は神なるものなし。神は
 神なるものなし。神は神なる
 ものなし。神は神なるもの
 なし。神は神なるものなし。

Handwritten text in a cursive script, likely a historical record or account. The text is written in a dark ink on aged, yellowish paper. It begins with a large initial letter, possibly 'D', and continues with several lines of dense, flowing script. The handwriting is characteristic of the early modern period, with long, sweeping strokes and frequent ascenders and descenders. The text appears to be a detailed narrative or a list of events, possibly related to a military campaign or a significant event, given the use of terms like 'army' and 'battle'.

Handwritten text in a cursive script, continuing the narrative from the previous page. The text is written in a dark ink on aged, yellowish paper. It begins with a large initial letter, possibly 'D', and continues with several lines of dense, flowing script. The handwriting is characteristic of the early modern period, with long, sweeping strokes and frequent ascenders and descenders. The text appears to be a detailed narrative or a list of events, possibly related to a military campaign or a significant event, given the use of terms like 'army' and 'battle'.

Handwritten text in a cursive script, likely a historical record or account. The text is densely packed and covers the entire page. It appears to be a list or a series of entries, possibly related to land or property, given the frequent use of terms like "land" and "property". The script is highly stylized and difficult to decipher without a key.

Handwritten text in a cursive script, continuing from the previous page. The text is densely packed and covers the entire page. It appears to be a list or a series of entries, possibly related to land or property, given the frequent use of terms like "land" and "property". The script is highly stylized and difficult to decipher without a key.

(51)

第 七 章

○ 神の御心は天高く
くまなく満ちて居り
○ 地の奥にまで
御心は及んで居り
○ 地の表にまで
御心は及んで居り
○ 地の裏にまで
御心は及んで居り
○ 地の隅にまで
御心は及んで居り
○ 地の底にまで
御心は及んで居り
○ 地の隙にまで
御心は及んで居り
○ 地の罅にまで
御心は及んで居り
○ 地の孔にまで
御心は及んで居り
○ 地の隙にまで
御心は及んで居り
○ 地の罅にまで
御心は及んで居り
○ 地の孔にまで
御心は及んで居り

○ 神の御心は天高く
くまなく満ちて居り
○ 地の奥にまで
御心は及んで居り
○ 地の表にまで
御心は及んで居り
○ 地の裏にまで
御心は及んで居り
○ 地の隅にまで
御心は及んで居り
○ 地の底にまで
御心は及んで居り
○ 地の隙にまで
御心は及んで居り
○ 地の罅にまで
御心は及んで居り
○ 地の孔にまで
御心は及んで居り
○ 地の隙にまで
御心は及んで居り
○ 地の罅にまで
御心は及んで居り
○ 地の孔にまで
御心は及んで居り

Handwritten text in a cursive script, likely a historical document or manuscript. The text is densely packed and covers most of the page. There are several red ink marks or corrections scattered throughout the writing.

Handwritten text in a cursive script, likely a historical document or manuscript. The text is densely packed and covers most of the page. There are several red ink marks or corrections scattered throughout the writing.

Handwritten text in a cursive script, likely a historical record or a personal diary. The text is densely packed and covers most of the page. There are several red ink marks, possibly corrections or highlights, scattered throughout the writing.

Handwritten text in a cursive script, similar to the right page. It begins with a large, bold character that appears to be 'と' (to), possibly indicating a date or a section header. The text continues in a dense, flowing style with several red ink marks.

Handwritten text in a cursive script, likely a historical document or manuscript. The text is densely packed and covers most of the page. There are several red ink marks or stamps scattered throughout the text, possibly indicating specific sections or corrections. The script is highly stylized and difficult to decipher without specialized knowledge of the language.

Handwritten text in a cursive script, continuing from the previous page. The text is densely packed and covers most of the page. There are several red ink marks or stamps scattered throughout the text, possibly indicating specific sections or corrections. The script is highly stylized and difficult to decipher without specialized knowledge of the language.

Handwritten text in a cursive script, likely a historical document or manuscript. The text is densely packed and covers most of the page. There are several red ink marks or stamps scattered throughout the text, possibly indicating specific points of interest or corrections. The script is highly stylized and difficult to decipher without specialized knowledge of the language.

Handwritten text in a cursive script, continuing from the previous page. The text is densely packed and covers most of the page. There are several red ink marks or stamps scattered throughout the text, possibly indicating specific points of interest or corrections. The script is highly stylized and difficult to decipher without specialized knowledge of the language.

Handwritten text in a cursive script, likely a historical document or manuscript. The text is written in a dense, flowing style across the right page of the open book.

Handwritten text in a cursive script, likely a historical document or manuscript. The text is written in a dense, flowing style across the left page of the open book.

Handwritten text in a cursive script, likely a historical document or manuscript. The text is densely packed and spans the width of the page.

Handwritten text in a cursive script, likely a historical document or manuscript. The text is densely packed and spans the width of the page.

Handwritten text in a cursive script, likely a historical document or manuscript. The text is densely packed and covers most of the page. There are several instances of red ink used for emphasis or correction, including a large red mark in the middle of the page. The script is highly stylized and difficult to decipher without specialized knowledge of the language.

Handwritten text in a cursive script, continuing from the previous page. The text is densely packed and covers most of the page. There are several instances of red ink used for emphasis or correction, including a large red mark in the middle of the page. The script is highly stylized and difficult to decipher without specialized knowledge of the language.

Handwritten Japanese text in a cursive style, starting with characters like 夫（him） and 妻（wife）. The text is written on a vertical page, with a clear left margin. Several red ink dots are scattered throughout the text, possibly indicating specific characters or punctuation. The paper shows signs of age and wear.

Handwritten Japanese text in a cursive style, continuing from the previous page. It begins with characters such as 夫（him） and 妻（wife）, and includes a vertical line of text in the left margin. Similar to the first page, this page contains several red ink dots. The paper is aged and shows some staining.

Handwritten text in a cursive script, likely a historical document or manuscript. The text is densely packed and covers most of the page. There are several blue rectangular marks or stamps interspersed within the writing.

Handwritten text in a cursive script, likely a historical document or manuscript. The text is densely packed and covers most of the page. There are several blue rectangular marks or stamps interspersed within the writing.

Handwritten text in a cursive script, likely a medieval manuscript. The text is written in black ink on aged, yellowish parchment. It consists of approximately 15 lines of text, with some lines starting with large, decorated initials. The script is dense and characteristic of the late Gothic or early modern period. There are several red wax seals or marks visible on the page, particularly near the top and middle sections.

Handwritten text in a cursive script, likely a medieval manuscript. The text is written in black ink on aged, yellowish parchment. It consists of approximately 15 lines of text, with some lines starting with large, decorated initials. The script is dense and characteristic of the late Gothic or early modern period. There are several red wax seals or marks visible on the page, particularly near the top and middle sections.

Handwritten text in a cursive script, likely a historical record or account. The text is dense and fills most of the page.

年三

年四

Handwritten text in a cursive script, continuing the narrative or record from the previous page.

Handwritten text in a cursive script, continuing the narrative or record from the previous page. The text is dense and fills most of the page.

Handwritten text in a cursive script, likely a medieval manuscript. The text is densely packed and covers most of the page.

Handwritten text in a cursive script, likely a medieval manuscript. The text is densely packed and covers most of the page.

Handwritten text in a cursive script, likely a medieval manuscript. The text is densely packed and covers most of the page. It appears to be a single continuous entry or a list of items. The script is highly stylized and difficult to decipher without specialized knowledge of the language or dialect used.

Handwritten text in a cursive script, likely a medieval manuscript. This page contains several lines of text, similar in style to the previous page. The text is densely packed and covers most of the page. It appears to be a single continuous entry or a list of items. The script is highly stylized and difficult to decipher without specialized knowledge of the language or dialect used.

Handwritten text in a cursive script, likely a historical document or manuscript. The text is written in a dark ink on aged, yellowish paper. It consists of approximately 15 lines of dense, flowing script. The characters are highly stylized and interconnected, characteristic of early modern cursive handwriting. The text is written from left to right across the page.

Handwritten text in a cursive script, continuing from the previous page. The text is written in a dark ink on aged, yellowish paper. It consists of approximately 15 lines of dense, flowing script. The characters are highly stylized and interconnected, characteristic of early modern cursive handwriting. The text is written from left to right across the page.

Handwritten text in a cursive script, likely a historical document or manuscript. The text is written in a dark ink on aged, yellowish paper. It consists of approximately 15 lines of text, starting with a large initial letter 'M'. The script is dense and characteristic of early modern European handwriting.

Handwritten text in a cursive script, likely a historical document or manuscript. The text is written in a dark ink on aged, yellowish paper. It consists of approximately 15 lines of text, starting with a large initial letter 'M'. The script is dense and characteristic of early modern European handwriting.

Handwritten text in a cursive script, likely a historical document or manuscript. The text is densely packed and covers most of the page.

Handwritten text in a cursive script, continuing from the previous page. The text is densely packed and covers most of the page.

Handwritten text in a cursive script, likely a historical document or manuscript. The text is densely packed and covers most of the page. It appears to be a list or a series of entries, possibly related to a military or administrative record. The script is highly stylized and difficult to decipher without specialized knowledge of the language or dialect used.

Handwritten text in a cursive script, continuing from the previous page. The text is densely packed and covers most of the page. It appears to be a list or a series of entries, possibly related to a military or administrative record. The script is highly stylized and difficult to decipher without specialized knowledge of the language or dialect used.

Handwritten text in a cursive script, likely a historical document or manuscript. The text is written in a dark ink on aged, yellowed paper. It consists of approximately 15 lines of dense, flowing script. There are several large, dark ink blotches or stains at the top of the page, partially obscuring the text. The script is highly stylized and difficult to decipher without specialized knowledge of the language or dialect used.

Handwritten text in a cursive script, continuing from the previous page. The text is written in a dark ink on aged, yellowed paper. It consists of approximately 15 lines of dense, flowing script. There are several large, dark ink blotches or stains at the top of the page, partially obscuring the text. The script is highly stylized and difficult to decipher without specialized knowledge of the language or dialect used.

Handwritten text in a cursive script, likely a historical document or manuscript. The text is dense and fills most of the page, with some red ink used for initials or corrections. The script is highly stylized and difficult to decipher without specialized knowledge.

Handwritten text in a cursive script, continuing from the previous page. The text is dense and fills most of the page, with some red ink used for initials or corrections. The script is highly stylized and difficult to decipher without specialized knowledge.

Handwritten text in a cursive script, likely a historical document or manuscript. The text is written in dark ink on aged, yellowish paper. There are several blue ink marks or corrections scattered throughout the text. A small red square is visible at the top left of the page.

Handwritten text, possibly a section header or a specific note, located in the center of the page.

Handwritten text in a cursive script, continuing from the previous page. The text is written in dark ink on aged, yellowish paper. There are several blue ink marks or corrections scattered throughout the text. A small red square is visible at the top left of the page.

Handwritten text in a cursive script, likely a historical document or manuscript. The text is densely packed and spans the width of the page. There are several blue ink corrections or markings on the page, including a large blue square and several smaller blue marks.

三十八

Handwritten text in a cursive script, continuing from the previous page. The text is densely packed and spans the width of the page. There are several red ink corrections or markings on the page, including a large red square and several smaller red marks.

Handwritten text in a cursive script, likely a medieval manuscript. The text is densely packed and spans the width of the page. It appears to be a single continuous line of writing, possibly a list or a narrative. The ink is dark, and the parchment shows signs of age and wear.

Handwritten text in a cursive script, likely a medieval manuscript. This block is a small section of text, possibly a heading or a separator, located in the middle of the page. It is written in the same style as the main text.

Handwritten text in a cursive script, likely a medieval manuscript. This block contains the main body of text on the right page, continuing from the left page. It is written in a dense, flowing cursive style, characteristic of the period. The text is arranged in a single line across the width of the page.

Handwritten text in a cursive script, likely a medieval manuscript. The text is written in dark ink on aged, yellowish parchment. It consists of approximately 15 lines of text, with some red ink used for initials or decorative elements. The script is dense and characteristic of the Gothic or similar medieval hand.

Handwritten text in a cursive script, likely a medieval manuscript. The text is written in dark ink on aged, yellowish parchment. It consists of approximately 15 lines of text, with some red ink used for initials or decorative elements. The script is dense and characteristic of the Gothic or similar medieval hand.

Handwritten text in a medieval script, likely Gothic or similar, covering the left page. The text is dense and fills most of the page, with some red ink used for initials or decorative elements.

Handwritten text in a medieval script, likely Gothic or similar, covering the right page. The text is dense and fills most of the page, with some red ink used for initials or decorative elements.

Handwritten text in a cursive script, likely a historical document or manuscript. The text is written in dark ink on aged, yellowish paper. It consists of approximately 15 lines of dense, flowing script. There are several small blue and red ink marks scattered throughout the text, possibly indicating corrections or specific points of interest. The script is highly stylized and difficult to decipher without a key.

Handwritten text in a cursive script, similar to the left page. This page also features dense, flowing script in dark ink on aged paper. Like the left page, it contains several small blue and red ink marks. The text is written in a consistent style, suggesting it is part of the same document or a related one. The overall appearance is that of a well-used historical manuscript.

Handwritten text in a cursive script, likely a historical document or manuscript. The text is written in dark ink on aged, yellowish paper. It consists of approximately 15 lines of dense, flowing script. There are several small red and blue ink marks scattered throughout the text, possibly serving as markers or corrections. The script is highly stylized and difficult to decipher without a key.

Handwritten text in a cursive script, continuing from the previous page. The text is written in dark ink on aged, yellowish paper. It consists of approximately 15 lines of dense, flowing script. There are several small red and blue ink marks scattered throughout the text, possibly serving as markers or corrections. The script is highly stylized and difficult to decipher without a key.

Handwritten text in a cursive script, likely a historical document or manuscript. The text is densely packed and covers most of the page.

1444

Handwritten text in a cursive script, continuing from the previous page. The text is densely packed and covers most of the page.

Handwritten text in a cursive script, likely a medieval manuscript. The text is written in black ink on aged, yellowish paper. It consists of approximately 12 lines of text, with some lines starting with large, decorated initials. The script is dense and characteristic of the late Gothic or early modern period. There are several red and blue ink markings, possibly corrections or decorative elements, scattered throughout the text.

Handwritten text in a cursive script, likely a medieval manuscript. The text is written in black ink on aged, yellowish paper. It consists of approximately 12 lines of text, with some lines starting with large, decorated initials. The script is dense and characteristic of the late Gothic or early modern period. There are several red and blue ink markings, possibly corrections or decorative elements, scattered throughout the text.

Handwritten text in a cursive script, likely a historical document or manuscript. The text is densely packed and spans the width of the page. It appears to be a list or a series of entries, possibly related to a military or administrative record. The script is highly stylized and difficult to decipher without specialized knowledge of the language or dialect used.

Handwritten text in a cursive script, continuing from the previous page. The text is densely packed and spans the width of the page. It appears to be a list or a series of entries, possibly related to a military or administrative record. The script is highly stylized and difficult to decipher without specialized knowledge of the language or dialect used.

Handwritten text in a cursive script, likely a historical document or manuscript. The text is written in a dark ink on aged, yellowish paper. It consists of approximately 15 lines of text, starting from the top right and moving downwards. The script is dense and characteristic of early modern European handwriting.

Handwritten text in a cursive script, likely a historical document or manuscript. The text is written in a dark ink on aged, yellowish paper. It consists of approximately 15 lines of text, starting from the top left and moving downwards. The script is dense and characteristic of early modern European handwriting.

Handwritten text in Arabic script, likely a religious or historical document. The text is densely packed and covers most of the page. There are several red ink markings, possibly initials or decorative elements, interspersed within the script.

Handwritten text in Arabic script, continuing from the previous page. The text is densely packed and covers most of the page. There are several red ink markings, possibly initials or decorative elements, interspersed within the script.

Handwritten text in a cursive script, likely a historical document or manuscript. The text is densely packed and covers most of the page. There are several red ink marks, possibly initials or corrections, scattered throughout the writing.

10 feet

Handwritten text in a cursive script, continuing from the previous page. The text is densely packed and covers most of the page. There are several red ink marks, possibly initials or corrections, scattered throughout the writing.

Handwritten text in a cursive script, likely a form of shorthand or a specific dialect. The text is densely packed and covers most of the page.

Handwritten text in a cursive script, similar to the left page. It includes a prominent red vertical character on the right side, possibly a section marker or a specific character.

第 一 乃 以 花 杜 追 風

Handwritten text in a cursive script, likely a historical document or manuscript. The text is densely packed and covers most of the page.

Handwritten text in a cursive script, likely a historical document or manuscript. The text is densely packed and covers most of the page.

Handwritten text in a cursive script, likely a medieval manuscript. The text is written in dark ink on aged, yellowish parchment. It consists of approximately 15 lines of text, with some lines starting with large, decorative initial letters. The script is dense and characteristic of the Gothic or similar medieval hands.

Handwritten text in a cursive script, likely a medieval manuscript. The text is written in dark ink on aged, yellowish parchment. It consists of approximately 15 lines of text, with some lines starting with large, decorative initial letters. The script is dense and characteristic of the Gothic or similar medieval hands.

Handwritten text in a cursive script, likely a medieval manuscript. The text is densely packed and spans the width of the page. It appears to be a single continuous line of writing, possibly a list or a narrative. The ink is dark and the parchment is aged and yellowed.

Handwritten text, possibly a section header or a marker, located in the center of the page. It consists of a few characters, possibly "11" or "12", followed by some illegible characters.

Handwritten text in a cursive script, likely a medieval manuscript. The text is densely packed and spans the width of the page. It appears to be a single continuous line of writing, possibly a list or a narrative. The ink is dark and the parchment is aged and yellowed.

Handwritten text in a cursive script, likely a historical document or manuscript. The text is written in a dark ink on aged, yellowish paper. It consists of approximately 15 lines of text, starting with a large initial letter. The script is dense and difficult to decipher without specialized knowledge of the language.

Handwritten text in a cursive script, likely a historical document or manuscript. The text is written in a dark ink on aged, yellowish paper. It consists of approximately 15 lines of text, starting with a large initial letter. The script is dense and difficult to decipher without specialized knowledge of the language.

Handwritten text in a cursive script, likely a historical document or manuscript. The text is densely packed and covers most of the page.

Handwritten text in a cursive script, continuing from the previous page. The text is densely packed and covers most of the page.

Handwritten text in a cursive script, likely a historical document or manuscript. The text is densely packed and covers the entire page.

Handwritten text in a cursive script, likely a historical document or manuscript. The text is densely packed and covers the entire page.

Handwritten text in a cursive script, likely a medieval manuscript. The text is written in a dark ink on aged, yellowish parchment. It consists of approximately 15 lines of text, starting with a large initial letter 'P' on the left side. The script is dense and characteristic of the Gothic or similar medieval hands.

Handwritten text in a cursive script, continuing from the previous page. The text is written in a dark ink on aged, yellowish parchment. It consists of approximately 15 lines of text, starting with a large initial letter 'P' on the left side. The script is dense and characteristic of the Gothic or similar medieval hands.

Handwritten text in a cursive script, likely a historical record or account. The text is densely packed and covers most of the page.

Handwritten text in a cursive script, continuing from the previous page. The text is densely packed and covers most of the page.

Handwritten text in a cursive script, likely a historical document or manuscript. The text is densely packed and covers most of the page.

Handwritten text in a cursive script, likely a historical document or manuscript. The text is densely packed and covers most of the page.

Handwritten text in a cursive script, likely a historical document or manuscript. The text is written in a dark ink on aged, yellowish paper. It consists of approximately 15 lines of dense, flowing handwriting. The script is highly stylized and characteristic of early modern European cursive. The text is written in a single column, filling most of the page's width. The ink shows some fading and bleed-through from the reverse side of the page.

Handwritten text in a cursive script, continuing from the previous page. The text is written in a dark ink on aged, yellowish paper. It consists of approximately 15 lines of dense, flowing handwriting. The script is highly stylized and characteristic of early modern European cursive. The text is written in a single column, filling most of the page's width. The ink shows some fading and bleed-through from the reverse side of the page.

Handwritten text in a cursive script, likely a historical document or manuscript. The text is written in a dense, flowing style across the page.

11

Handwritten text in a cursive script, likely a historical document or manuscript. The text is written in a dense, flowing style across the page.

Handwritten text in a cursive script, likely a historical document or manuscript. The text is densely packed and spans the width of the page.

Handwritten text in a cursive script, likely a historical document or manuscript. The text is densely packed and spans the width of the page.

Handwritten text in a cursive script, possibly a title or header, written in black ink.

Main body of handwritten text in a cursive script, written in black ink, covering the right page of the manuscript.

Main body of handwritten text in a cursive script, written in black ink, covering the left page of the manuscript.

Handwritten text in a cursive script, likely a historical document or manuscript. The text is written in a dark ink on aged, yellowish paper. It consists of approximately 15 lines of text, with some lines starting with capital letters. The script is dense and characteristic of early modern European handwriting.

1571

Handwritten text in a cursive script, continuing from the previous page. The text is written in a dark ink on aged, yellowish paper. It consists of approximately 15 lines of text, with some lines starting with capital letters. The script is dense and characteristic of early modern European handwriting.

Handwritten text in a cursive script, likely a historical record or account. The text is densely packed and covers most of the page.

Handwritten text in a cursive script, likely a historical record or account. The text is densely packed and covers most of the page.

二
一

Handwritten text in a cursive script, likely a historical document or manuscript. The text is written in a dark ink on aged, yellowish paper. It consists of approximately 15 lines of text, starting with a large initial letter. The script is dense and characteristic of early modern European handwriting.

Small vertical text or signature, possibly a date or a reference mark, located between the two pages.

Handwritten text in a cursive script, continuing from the previous page. The text is written in a dark ink on aged, yellowish paper. It consists of approximately 15 lines of text, starting with a large initial letter. The script is dense and characteristic of early modern European handwriting.

Vertical text on the right edge of the page, possibly bleed-through or a marginal note.

慶曆元

辛未天

脯月十一日

化清

夜人

波回一鳥

海長絲兒

尋本正三

難波之三

豐河甚六

華石宋補

