



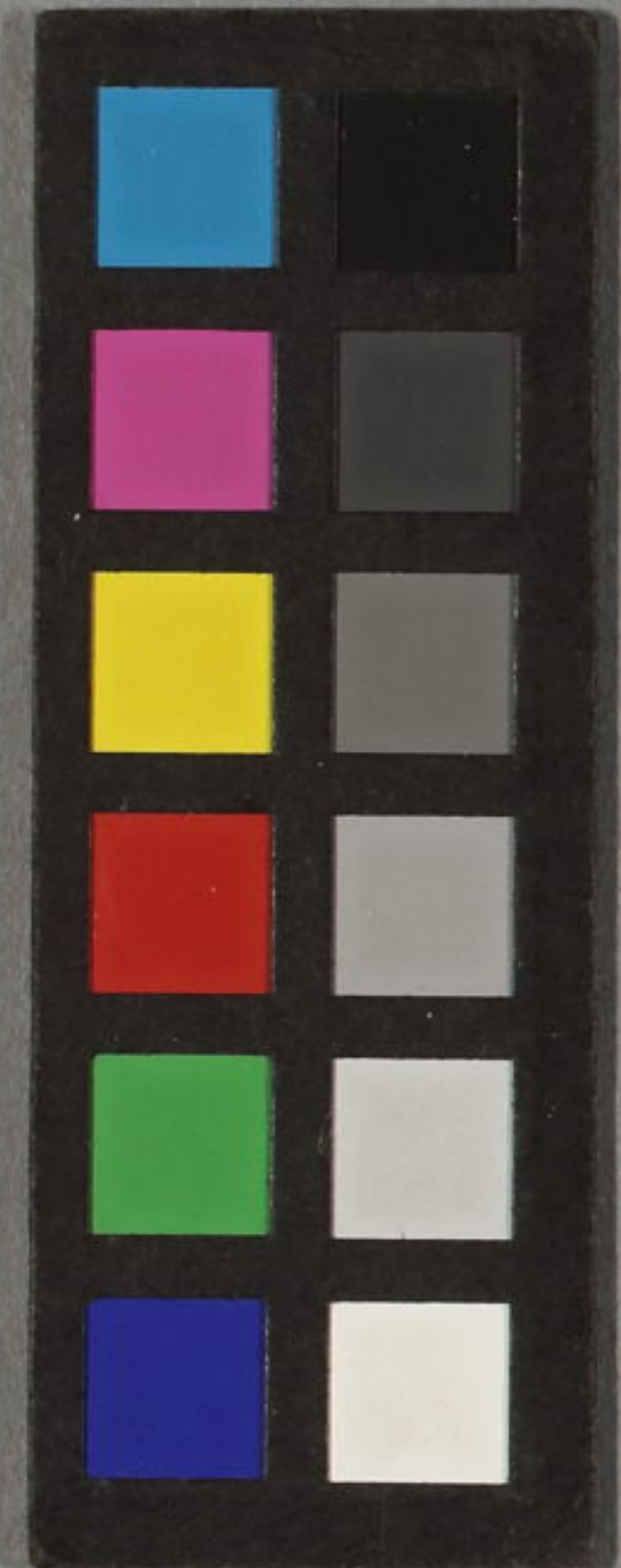
一陽齋豊国画

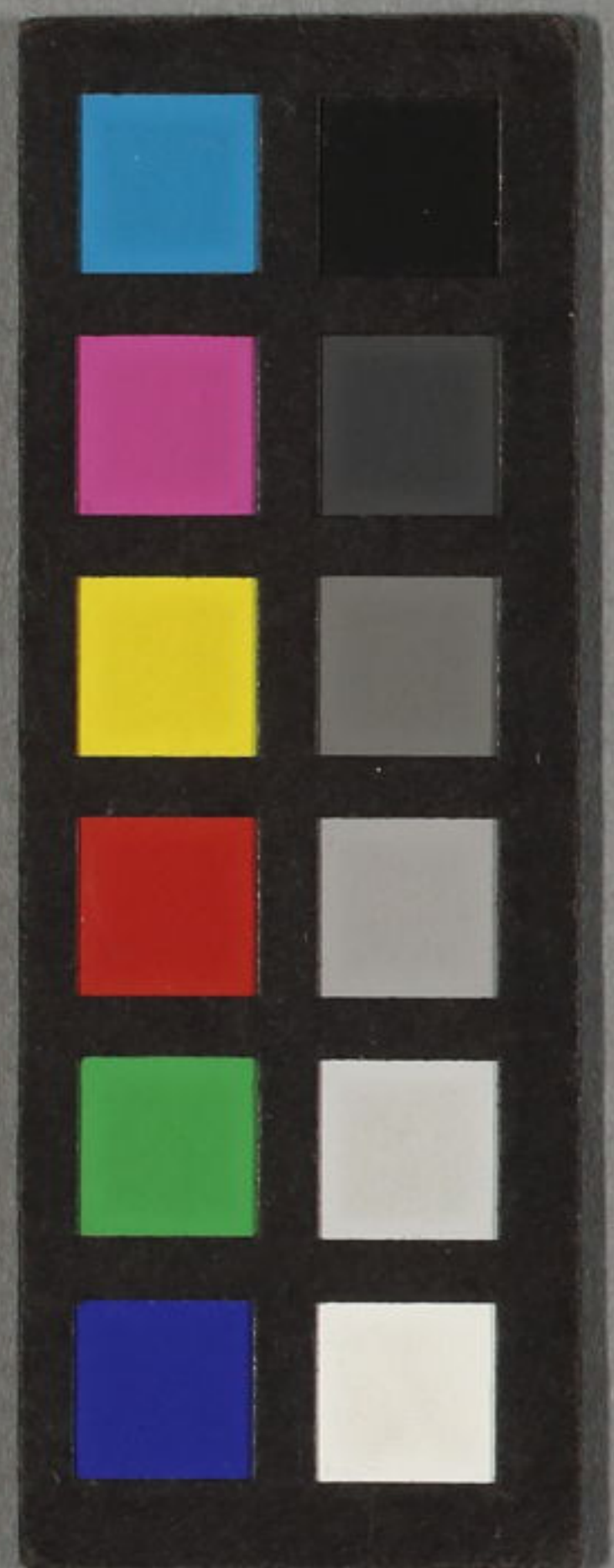
十五編下

笠亭仙果鈔録

一名の
矢傳大立巾紙

十五編上





笠亭仙果鈔録

一名の
矢傳大血州紙

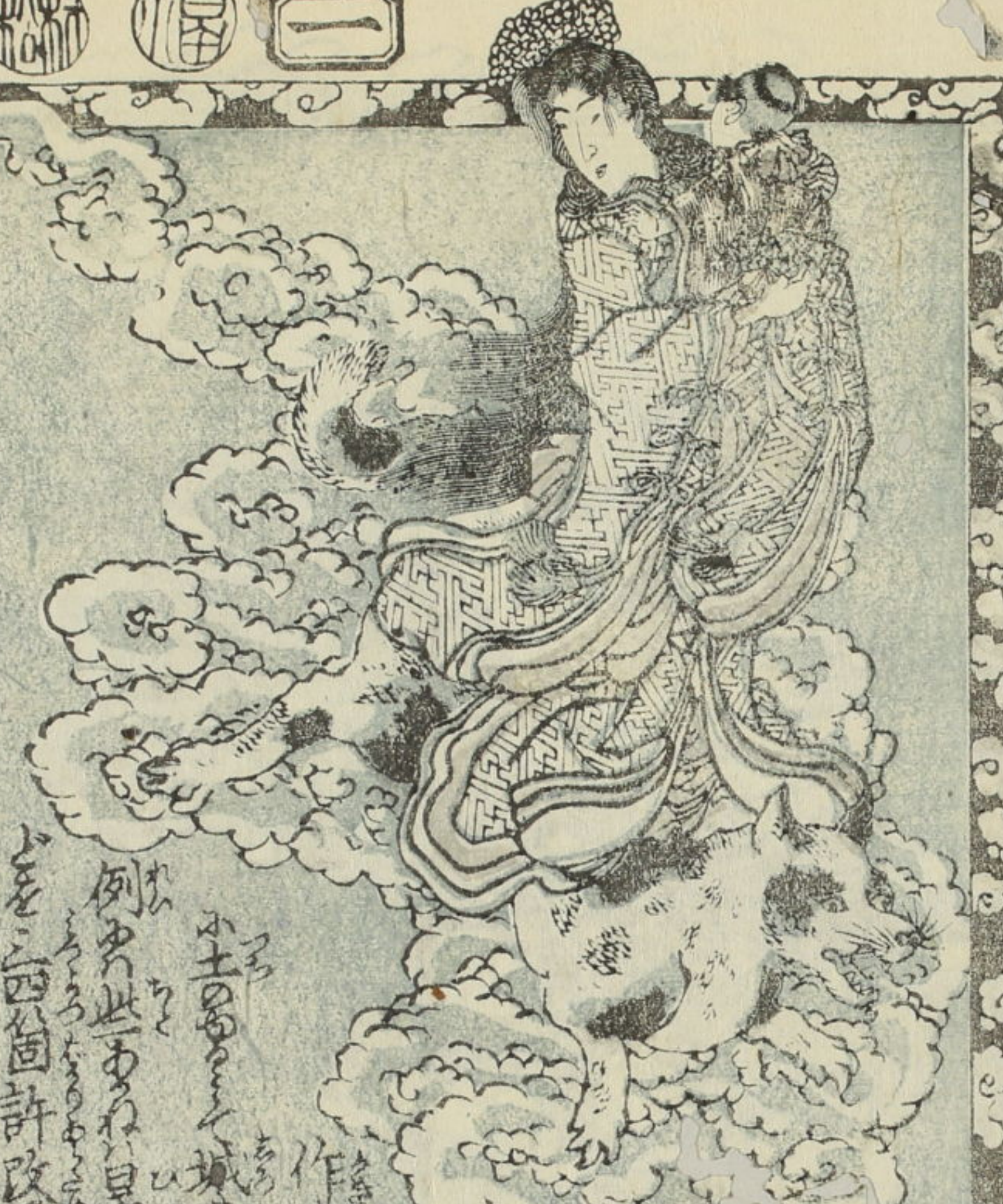
十五編上



の案下小尽果て又此編もゆきをともゆきも極むるあり

辛亥謹月護販

笠亭仙果



此編在蔵刑不臨て有りて東海の孝婦の事なり
父の事記したる東海の孝婦の事なり
記十の巻小出さる原傳其燕の都淵云云
在把梁の妻の事なり果て怨地小城に在りて
作れり此の和歌の死に其妻の事なり
例此の事なり早魅の對し長霜と取換るもの
を西箇許改保養と申とあるく別意なる嗟乎序

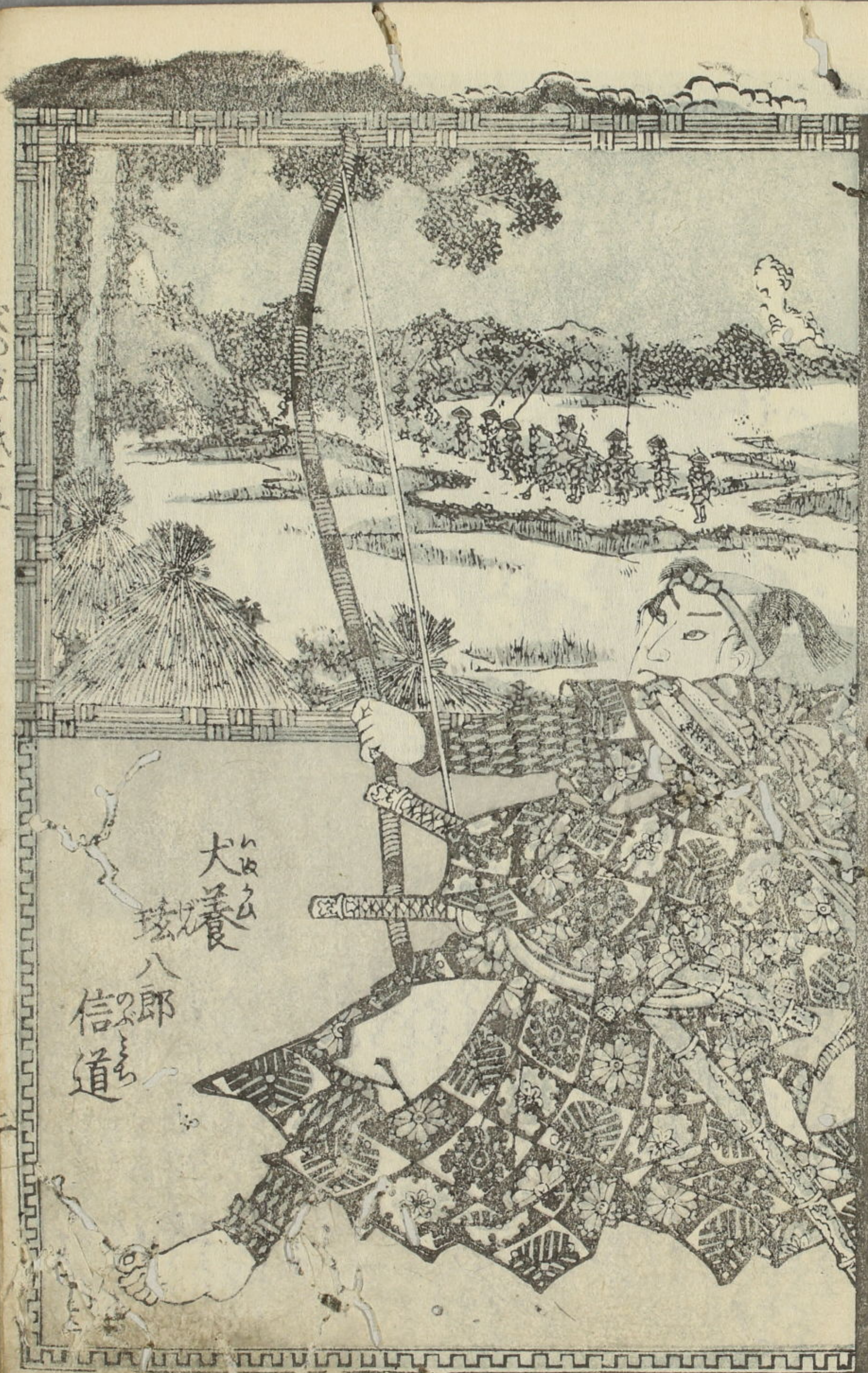


高梅
芽標
上偏上

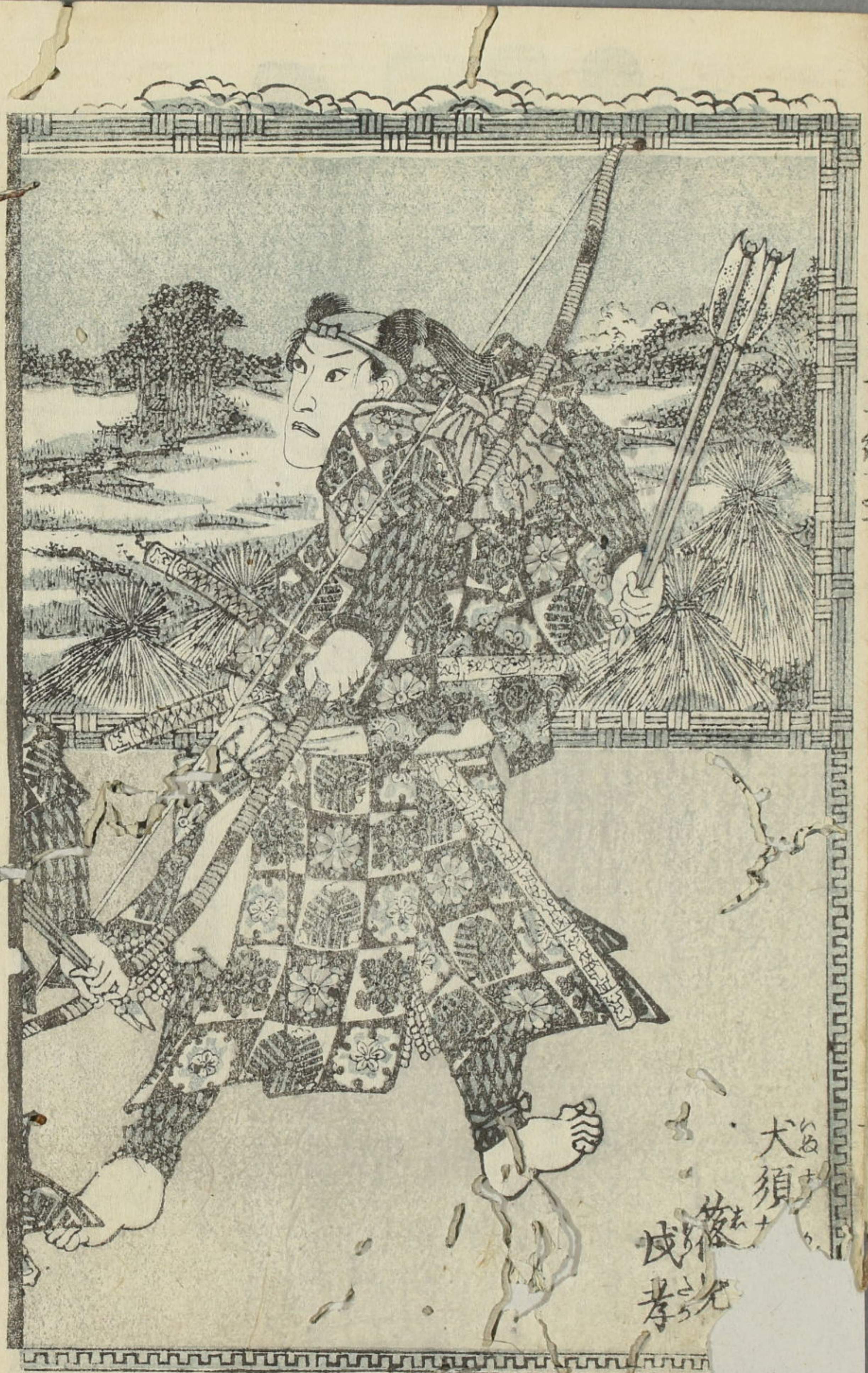
新んくくく
かきくくく

はくく
板

五清

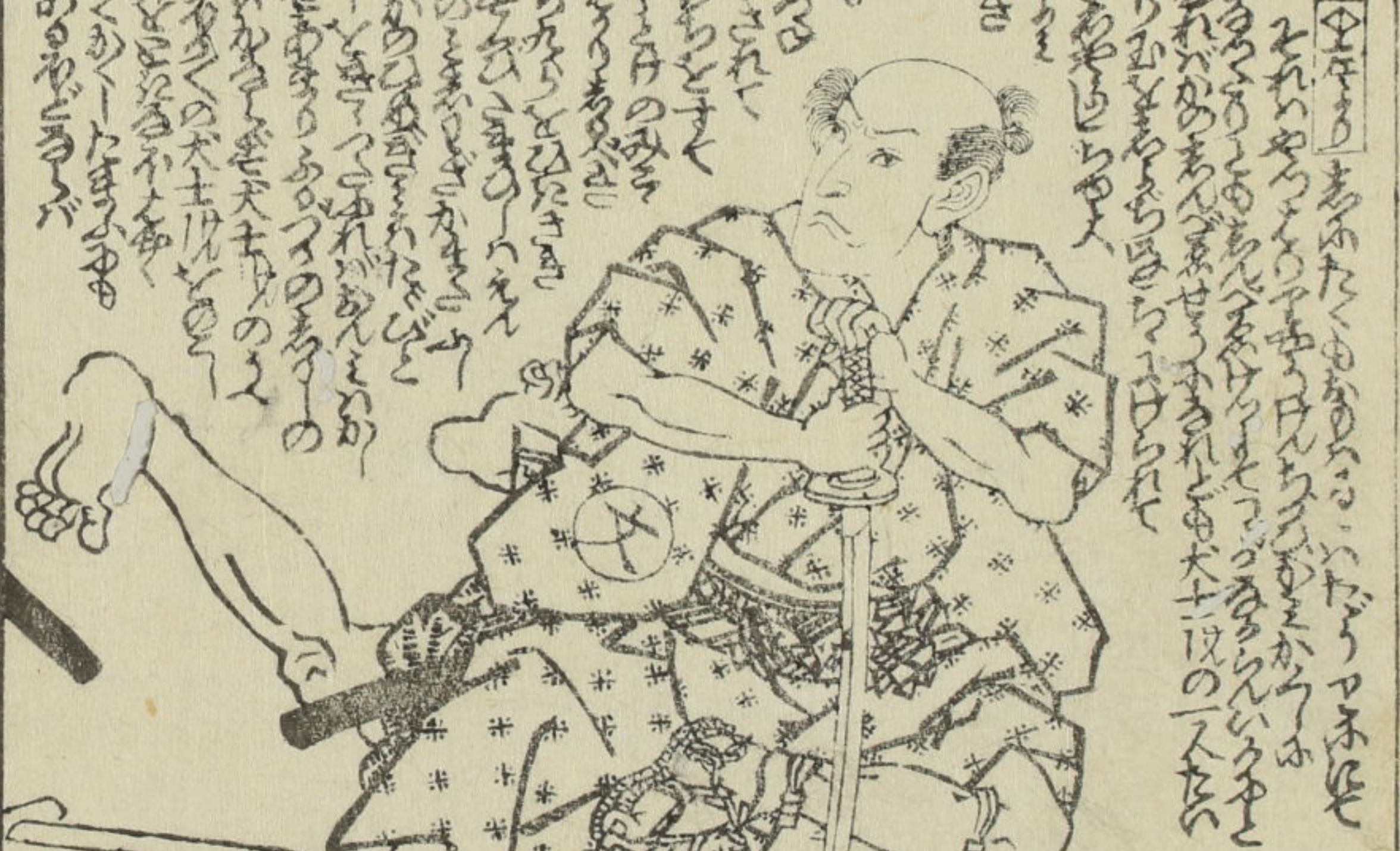


大養
八郎
信道



大須
孝

此の世に於ては... 人の世に於ては... 人の世に於ては... 人の世に於ては... 人の世に於ては...



此の世に於ては... 人の世に於ては... 人の世に於ては... 人の世に於ては... 人の世に於ては...

此の世に於ては... 人の世に於ては... 人の世に於ては... 人の世に於ては... 人の世に於ては...



此の世に於ては... 人の世に於ては... 人の世に於ては... 人の世に於ては... 人の世に於ては...



入の... 御免... 信州上田東山堂製

一陽齋豊國書画
淨書 谷金川

御免痲積湯
信州上田東山堂製

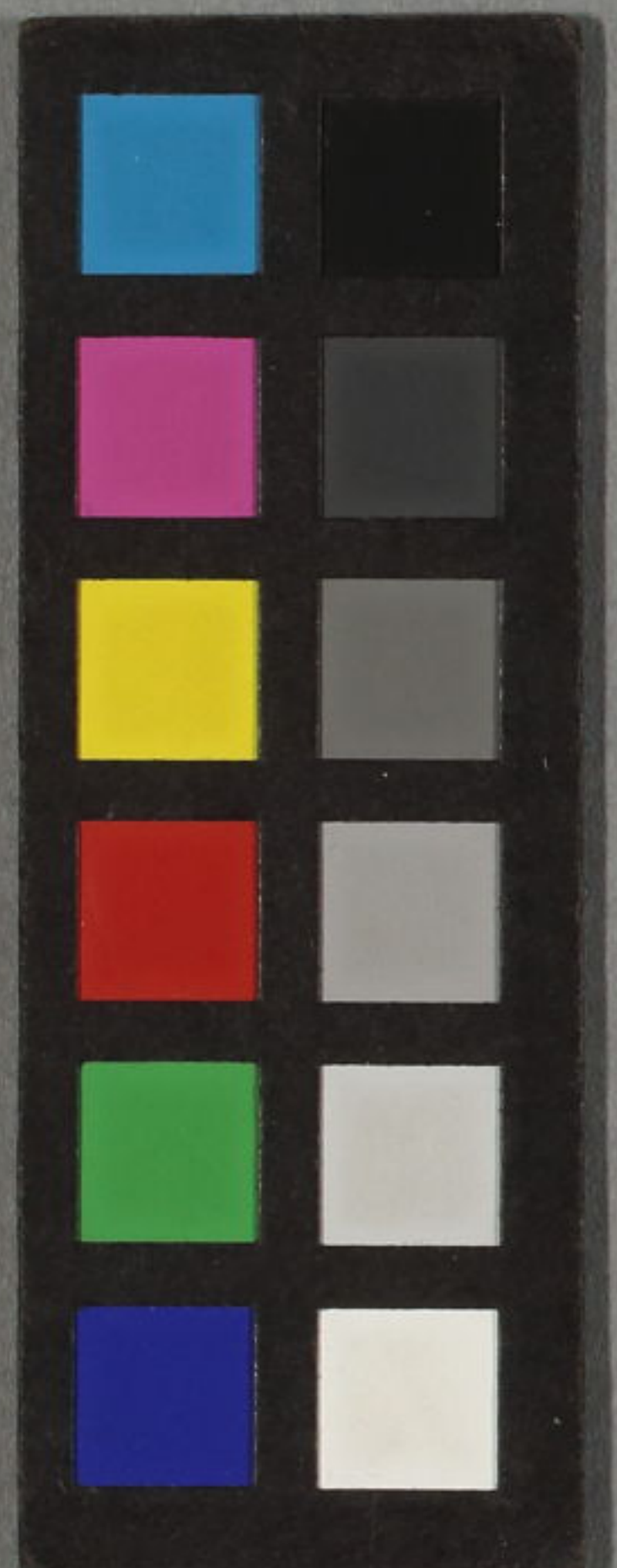
毒心元
おのろい
を月ちる
一袋 代四十編

せいの流
れろい
おのろい
一色 古四文

中橋南傳馬町二丁目
津多々吉

清茶 白芙蓉
おのろい 一色 二十六文
曙の富士
日 三十二





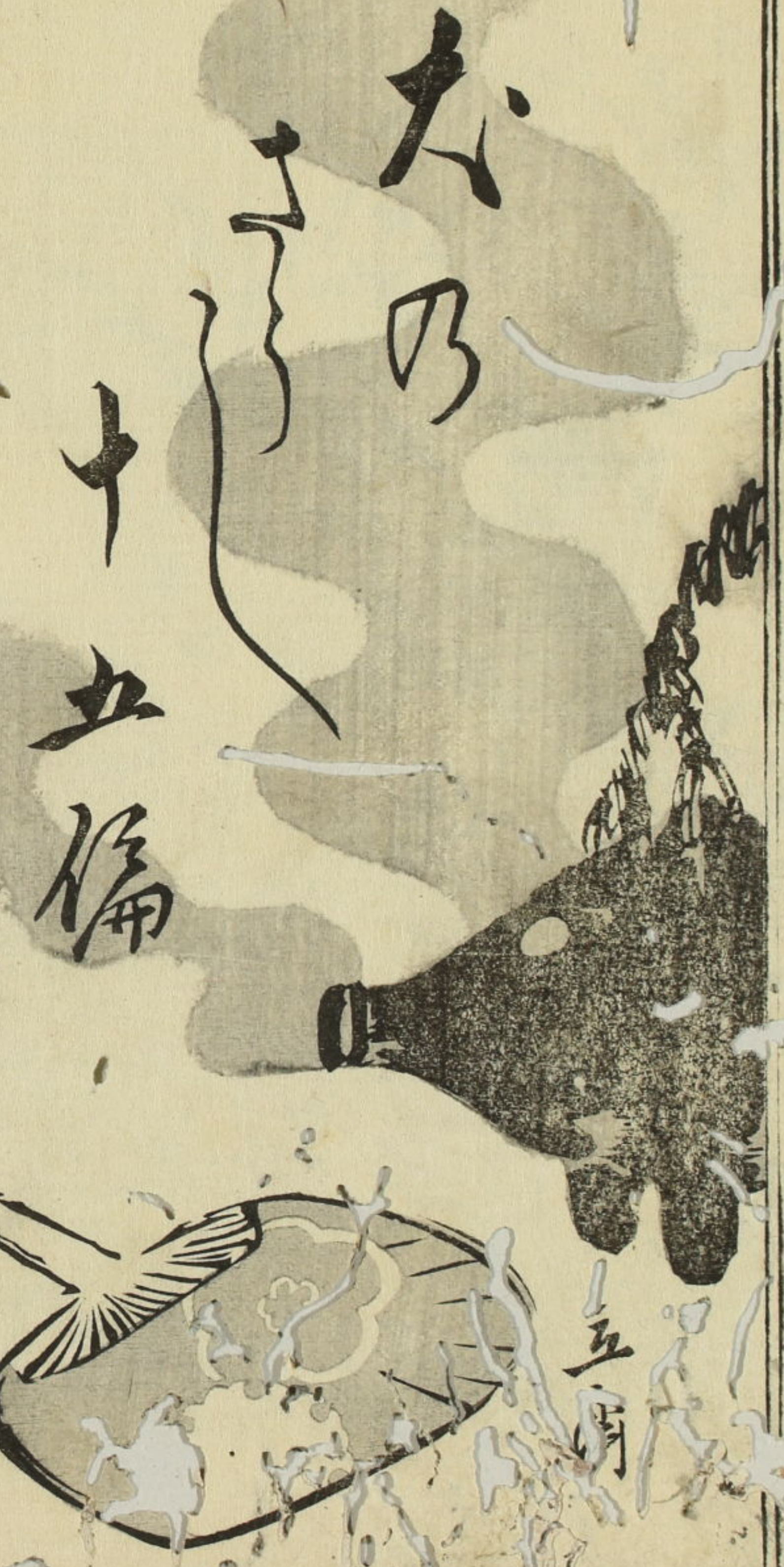


大の首十餘枚五

十一

仙果鈔録
豊因重

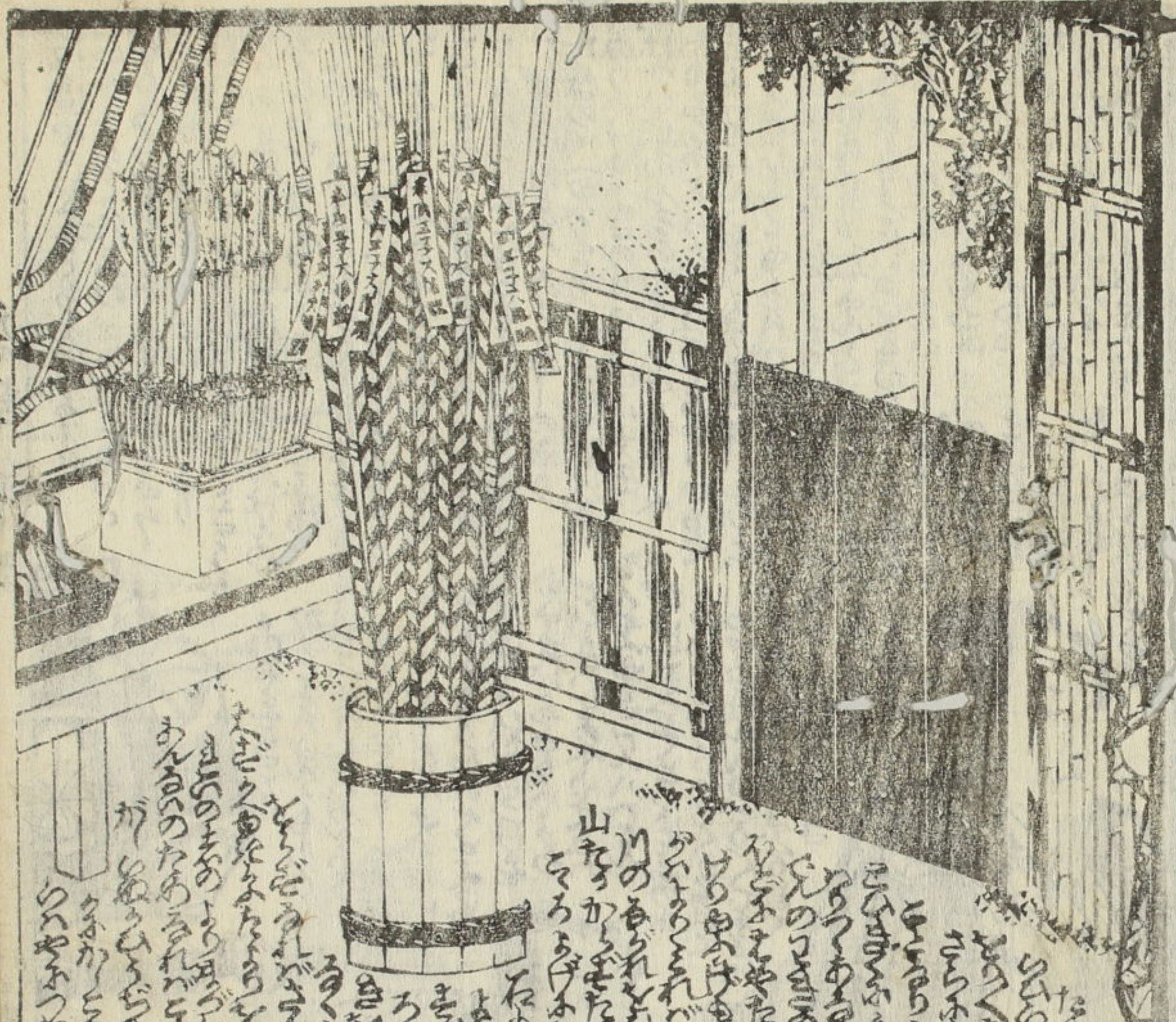
下冊
紅英堂梓



大乃

十五偏

五偏



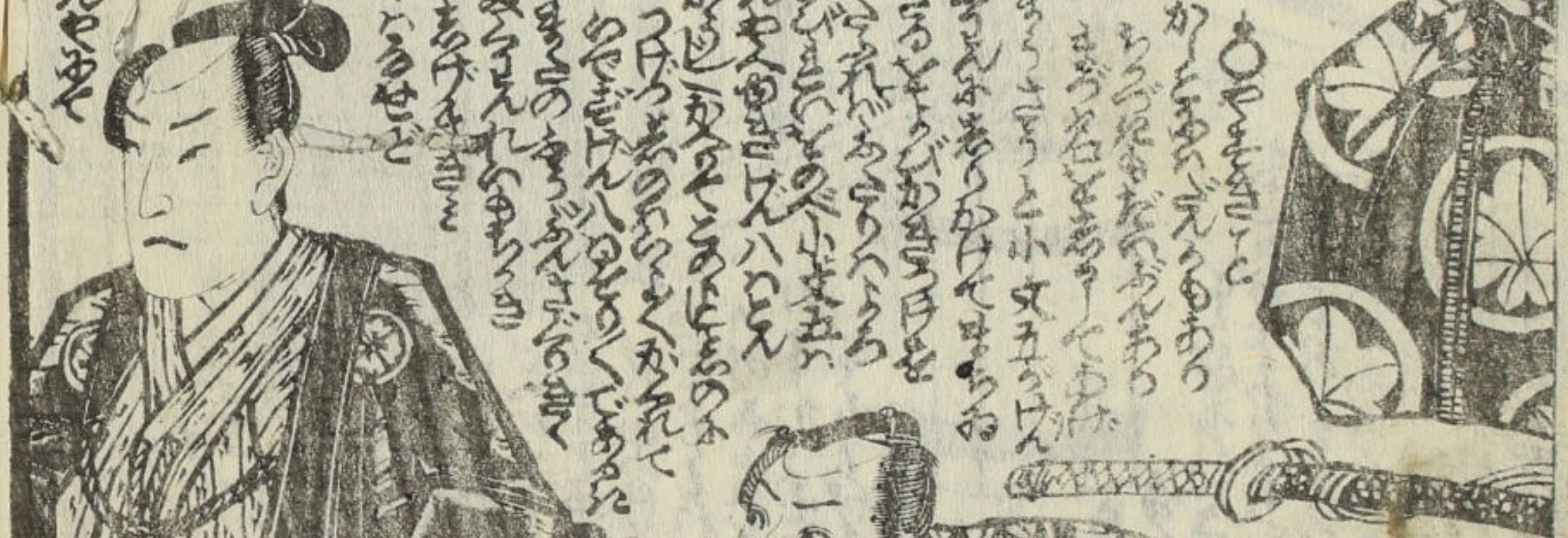
Handwritten text in a cursive style, likely a transcription of a play or a commentary. The text is arranged in several columns, starting from the right side of the page and moving towards the left. The characters are densely packed and difficult to read without specialized knowledge of the script.



Handwritten text in a cursive style, likely a transcription of a play or a commentary. The text is arranged in several columns, starting from the right side of the page and moving towards the left. The characters are densely packed and difficult to read without specialized knowledge of the script.

Handwritten text in a cursive style, likely a transcription of a play or a commentary. The text is arranged in several columns, starting from the right side of the page and moving towards the left. The characters are densely packed and difficult to read without specialized knowledge of the script.

Handwritten text in the upper right section of the right page, written in a vertical column.

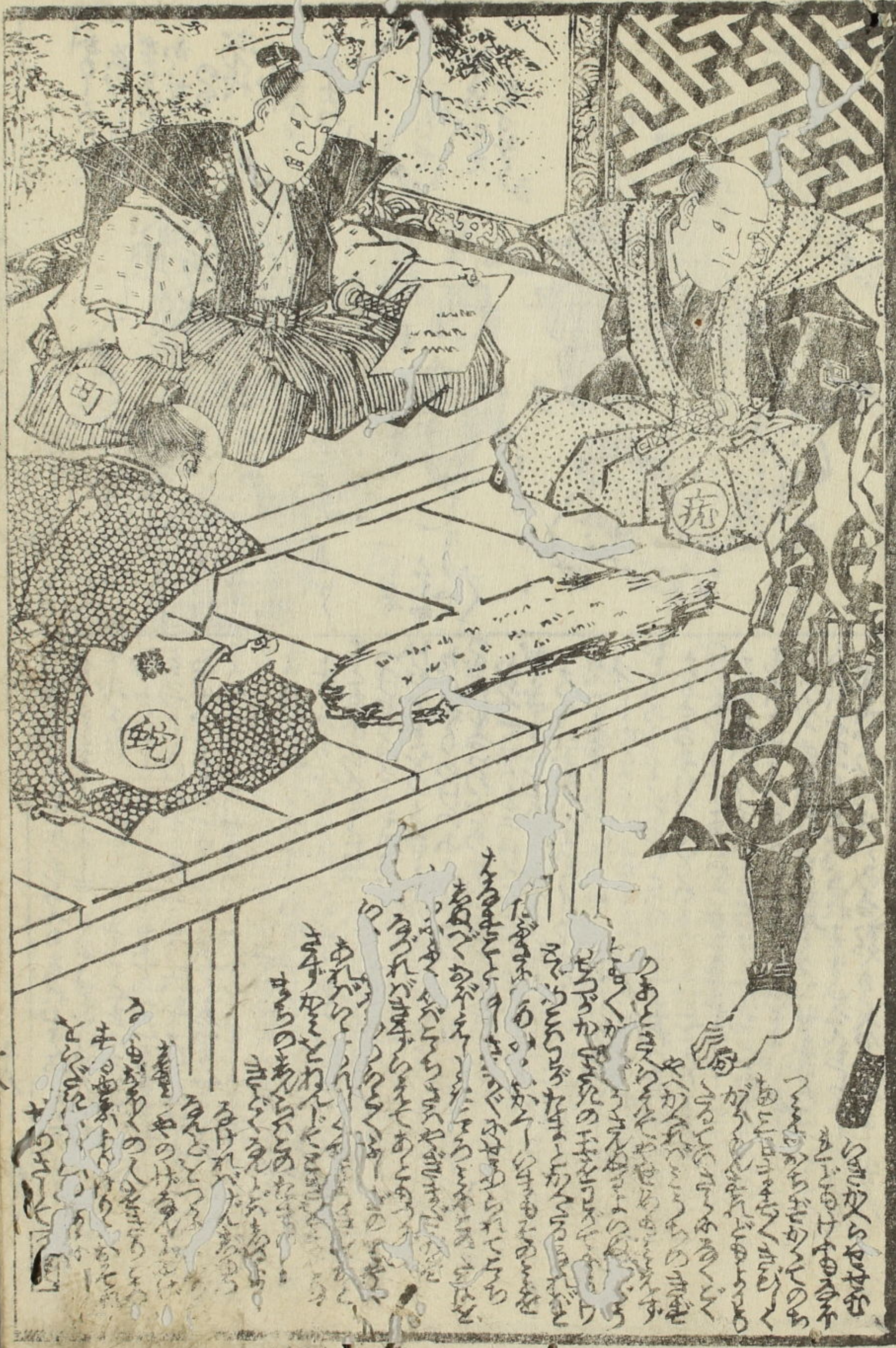


Handwritten text in the lower right section of the right page, written in a vertical column.

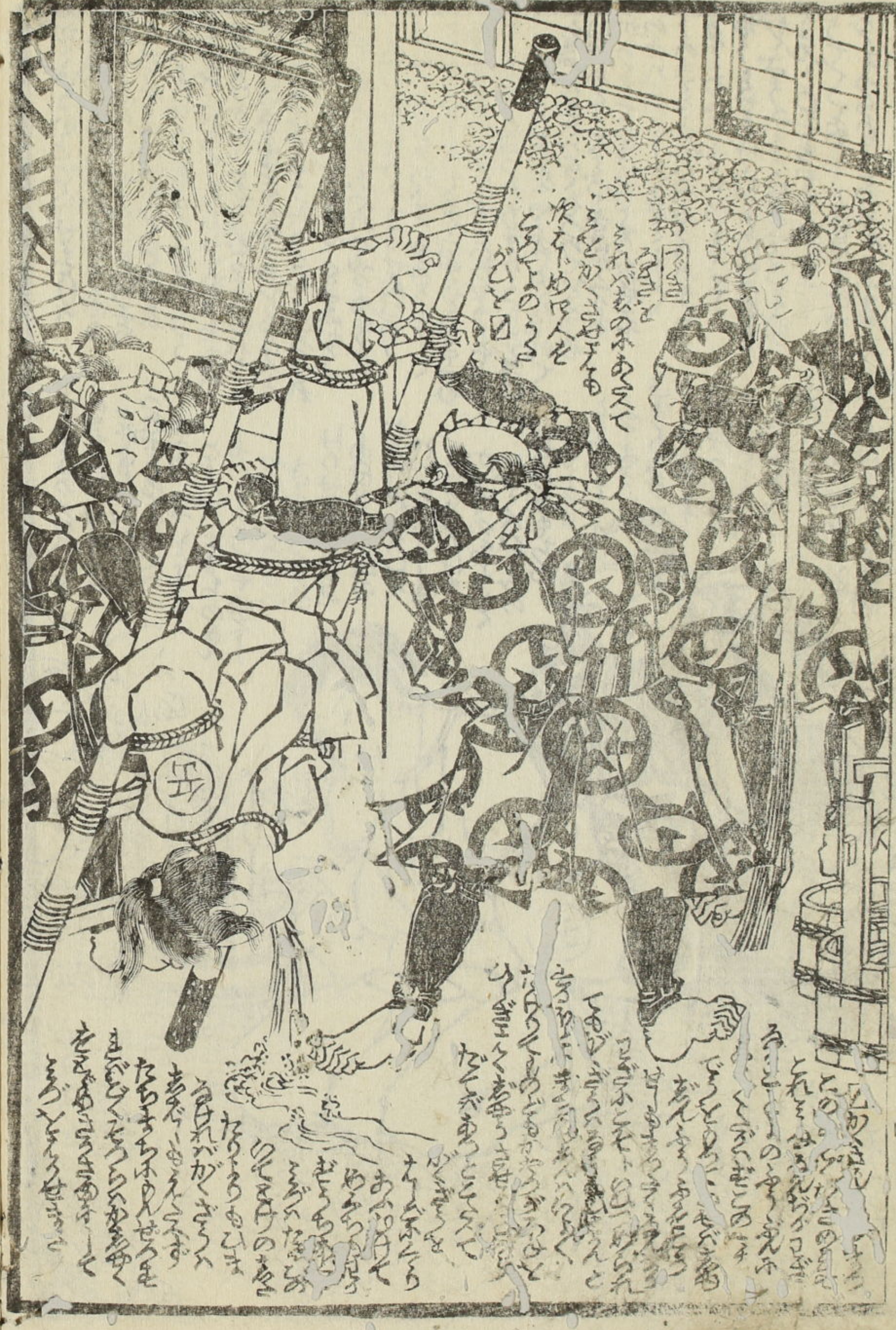
Handwritten text in the upper left section of the left page, written in a vertical column.



Handwritten text in the lower left section of the left page, written in a vertical column.



Handwritten text in Japanese, likely a commentary or dialogue related to the scene above. The text is arranged in vertical columns, reading from right to left. It includes several lines of characters, some of which are partially obscured by ink bleed-through from the reverse side of the page.



Handwritten text in Japanese, likely a commentary or dialogue related to the scene above. The text is arranged in vertical columns, reading from right to left. It includes several lines of characters, some of which are partially obscured by ink bleed-through from the reverse side of the page.

