















~~~~~

湖上落葉

~~~~~

~~~~~

落葉騰花

~~~~~

湖上落葉

~~~~~

~~~~~

~~~~~

~~~~~

十月十二日京入

~~~~~

~~~~~

~~~~~

霜

~~~~~

朝霜

~~~~~



閑度霜

自もささく度かたしとてはゆたかきしきり  
ゆたかきしきりゆたかきしきりゆたかきしきり  
枯野曙

枯野曙

出石花大とてはゆたかきしきり  
ゆたかきしきりゆたかきしきりゆたかきしきり  
枯野曙

三

寒松

ゆたかきしきりゆたかきしきりゆたかきしきり  
ゆたかきしきりゆたかきしきりゆたかきしきり  
木枯

木枯

寒草

ゆたかきしきりゆたかきしきりゆたかきしきり  
ゆたかきしきりゆたかきしきりゆたかきしきり  
寒草

寒草霜

ゆたかきしきりゆたかきしきりゆたかきしきり  
ゆたかきしきりゆたかきしきりゆたかきしきり  
寒草霜











Handwritten text in a cursive script, enclosed in a rectangular border. The text is written vertically and appears to be a list or a series of entries. The characters are highly stylized and difficult to decipher. There are approximately 10 lines of text.

書

Handwritten text at the top of the page, possibly a page number or a header.

Handwritten text in a cursive script, enclosed in a rectangular border. The text is written vertically and appears to be a list or a series of entries. The characters are highly stylized and difficult to decipher. There are approximately 10 lines of text.

十月也申の好の神を奉りて...  
Handwritten text at the bottom of the page, possibly a date or a note.







難波の雪は花の如く散るるを  
雪も花も散るるを  
雪も花も散るるを

雪  
都雪

あまの雪  
神社雪

井場  
社頭雪

雪  
雪

雪

雪  
雪

雪  
雪

雪  
雪

雪  
雪

雪  
雪



雪似花

雪點林頭見有花

雪乃來

十二月和行

雪中獸

大

雪中會友

雪中行人

雪中客來

雪中眺望

雪中遠望

雪中待春











うめ乃花うららふよちかたをうららけ廻りて春の海をうらら

寒月照梅花

白梅の花を照らす寒月の光は梅の花をうららけ廻りて春の海をうらら

都歳暮

まげし白梅の花を照らす寒月の光は梅の花をうららけ廻りて春の海をうらら

都歳暮

まげし白梅の花を照らす寒月の光は梅の花をうららけ廻りて春の海をうらら

都歳暮

まげし白梅の花を照らす寒月の光は梅の花をうららけ廻りて春の海をうらら

まげし白梅の花を照らす寒月の光は梅の花をうららけ廻りて春の海をうらら

都歳暮

まげし白梅の花を照らす寒月の光は梅の花をうららけ廻りて春の海をうらら

都歳暮

まげし白梅の花を照らす寒月の光は梅の花をうららけ廻りて春の海をうらら

都歳暮

まげし白梅の花を照らす寒月の光は梅の花をうららけ廻りて春の海をうらら

都歳暮

まげし白梅の花を照らす寒月の光は梅の花をうららけ廻りて春の海をうらら

都歳暮

まげし白梅の花を照らす寒月の光は梅の花をうららけ廻りて春の海をうらら











おのゝちかきしるゝとれは、あゝおれ白の雪よ月をぬれは

冬風

冬もはまきしるゝとれは、あゝおれ白の雪よ月をぬれは

冬嶺

冬もはまきしるゝとれは、あゝおれ白の雪よ月をぬれは

冬もはまきしるゝとれは、あゝおれ白の雪よ月をぬれは

冬湊

冬もはまきしるゝとれは、あゝおれ白の雪よ月をぬれは

冬秋

冬もはまきしるゝとれは、あゝおれ白の雪よ月をぬれは

三  
冬もはまきしるゝとれは、あゝおれ白の雪よ月をぬれは

うもはまきしるゝとれは、あゝおれ白の雪よ月をぬれは

五引

五十しるゝとれは、あゝおれ白の雪よ月をぬれは

うもはまきしるゝとれは、あゝおれ白の雪よ月をぬれは

うもはまきしるゝとれは、あゝおれ白の雪よ月をぬれは

うもはまきしるゝとれは、あゝおれ白の雪よ月をぬれは

未言

うもはまきしるゝとれは、あゝおれ白の雪よ月をぬれは

浅始

うもはまきしるゝとれは、あゝおれ白の雪よ月をぬれは

忠念























~~~~~

雲の黙

~~~~~

雲の捲

~~~~~

雲の衣

~~~~~

雲の帯

~~~~~

雲の車

~~~~~

□~~~~~

~~~~~

~~~~~

~~~~~

~~~~~

~~~~~

~~~~~

~~~~~

~~~~~

~~~~~

~~~~~

~~~~~



Handwritten text in a cursive script, enclosed in a rectangular border. The text is arranged in approximately 10 lines, starting with a large initial letter 'D' on the first line. The script is dense and characteristic of 17th-century manuscript writing.

Handwritten text consisting of a small square symbol followed by a few characters, possibly a page marker or a specific reference.

Handwritten text in a cursive script, enclosed in a rectangular border. The text is arranged in approximately 10 lines, starting with a large initial letter 'D' on the first line. The script is dense and characteristic of 17th-century manuscript writing.







Handwritten text in a cursive script, enclosed in a rectangular border. The text is arranged in approximately 12 lines, starting from the top right and moving downwards. The script is highly stylized and appears to be a form of shorthand or a specific dialect of a cursive hand.

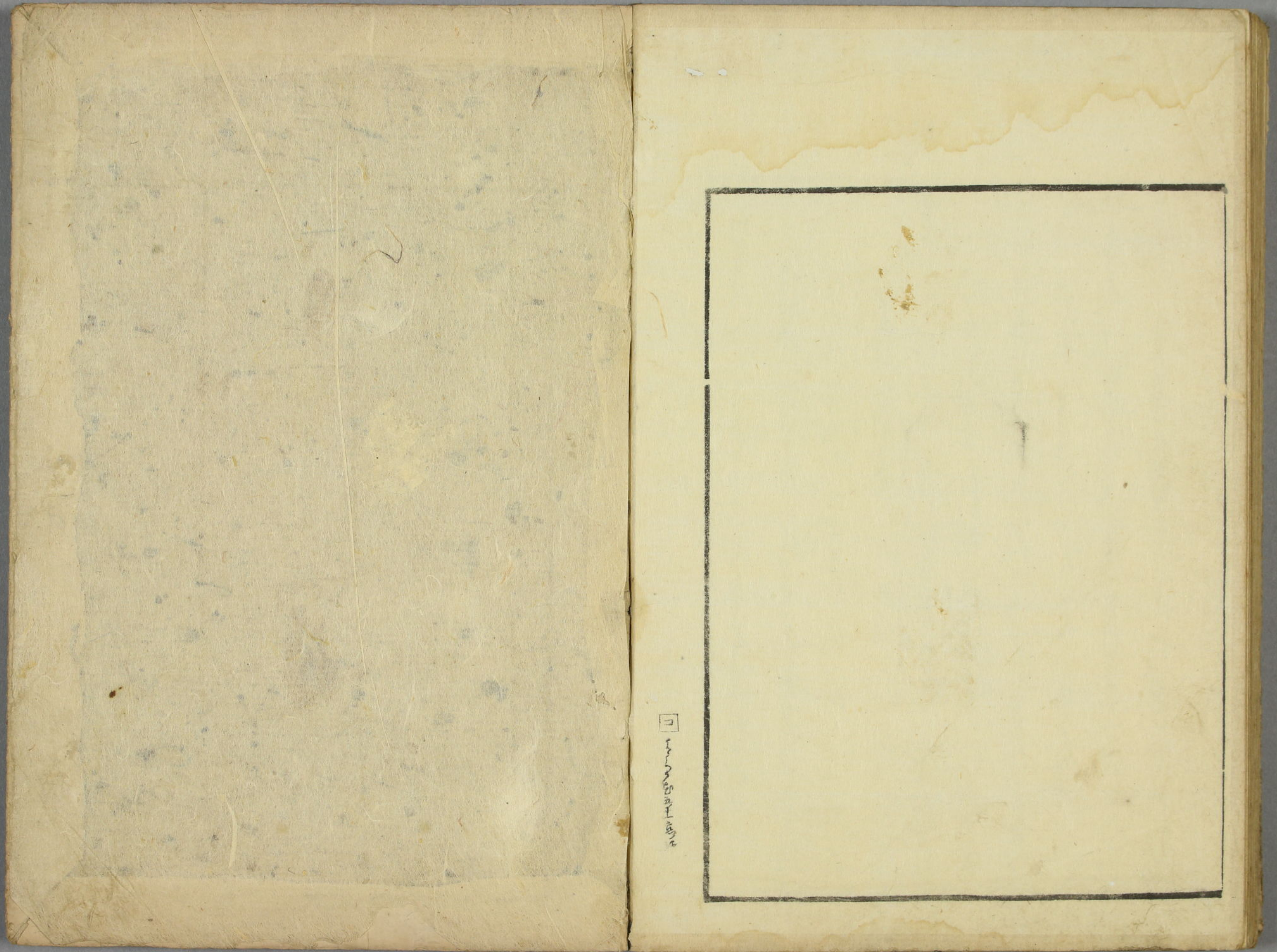
Handwritten text in a cursive script, enclosed in a rectangular border. The text is arranged in approximately 12 lines, starting from the top right and moving downwards. The script is highly stylized and appears to be a form of shorthand or a specific dialect of a cursive hand.

Line number 12









1

Wm. Southwell



