

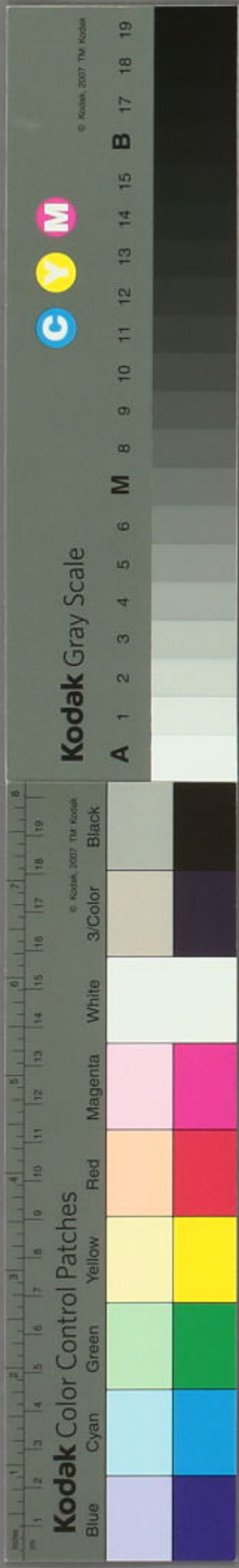


亡師芭蕉翁像畫杉風



Handwritten calligraphy on the top left section of the scroll, including the name 杉風 (Shōfū) and other characters.

Handwritten calligraphy on the top right section of the scroll, including the name 芭蕉 (Bashō) and other characters.

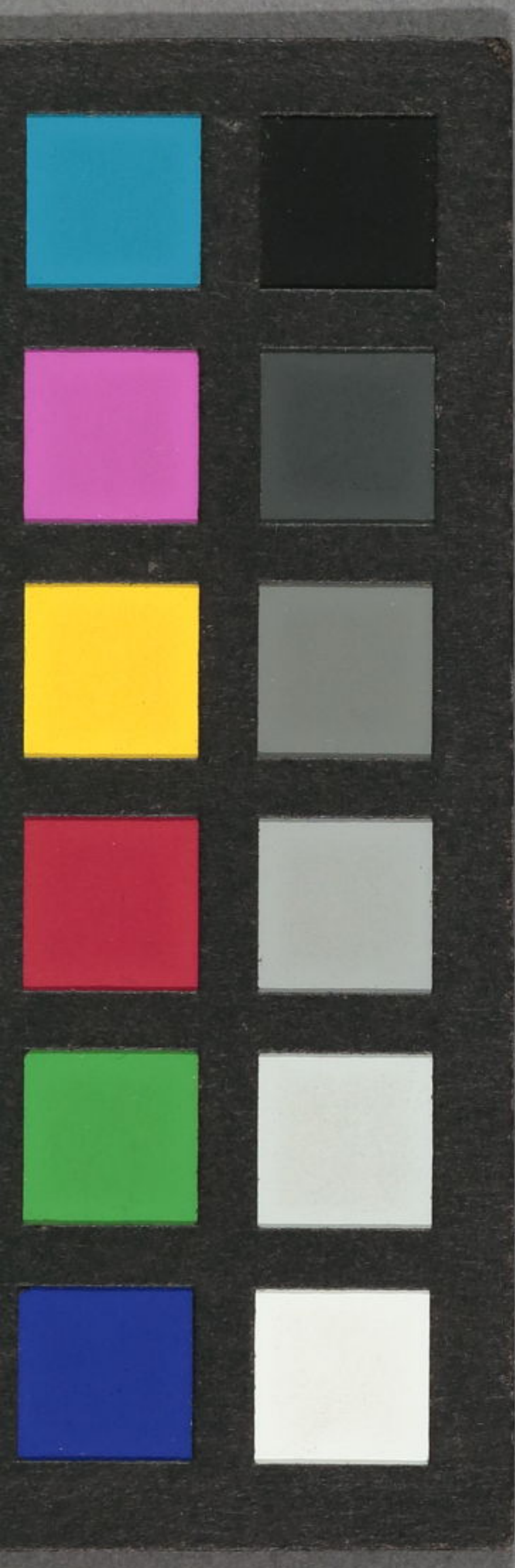




亡師芭蕉翁像畫  
杉風



2<sup>2m</sup> 3 4 5 6 7 8 9 10 1 2<sup>JAPAN</sup> 3 4 5 6 7 8 9 20





芭蕉道画像

十



