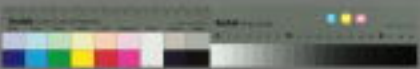


Handwritten text in a cursive script, likely a form or document, written on aged paper. The text is arranged in several lines on both pages. The right page contains approximately 10 lines of text, while the left page contains approximately 10 lines of text. The script is dense and difficult to decipher without a key.





Handwritten text, possibly a date or reference number.

Handwritten text, possibly a name or title.

Handwritten text, possibly a location or address.

Handwritten text, possibly a name or title.

Handwritten text, possibly a name or title.

Handwritten text, possibly a name or title.

Handwritten text, possibly a name or title.

Handwritten text, possibly a name or title.

Handwritten text, possibly a name or title.

Handwritten text, possibly a name or title.

Handwritten text, possibly a name or title.

