

Red seal impression with Chinese characters, likely the artist's signature or studio mark.

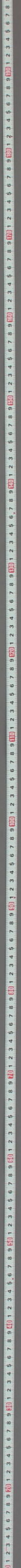
Two columns of vertical Chinese calligraphy in cursive script. The right column contains the characters '海山' (Haishan) and the left column contains '畫' (Huà), together meaning 'Haishan's Painting'.



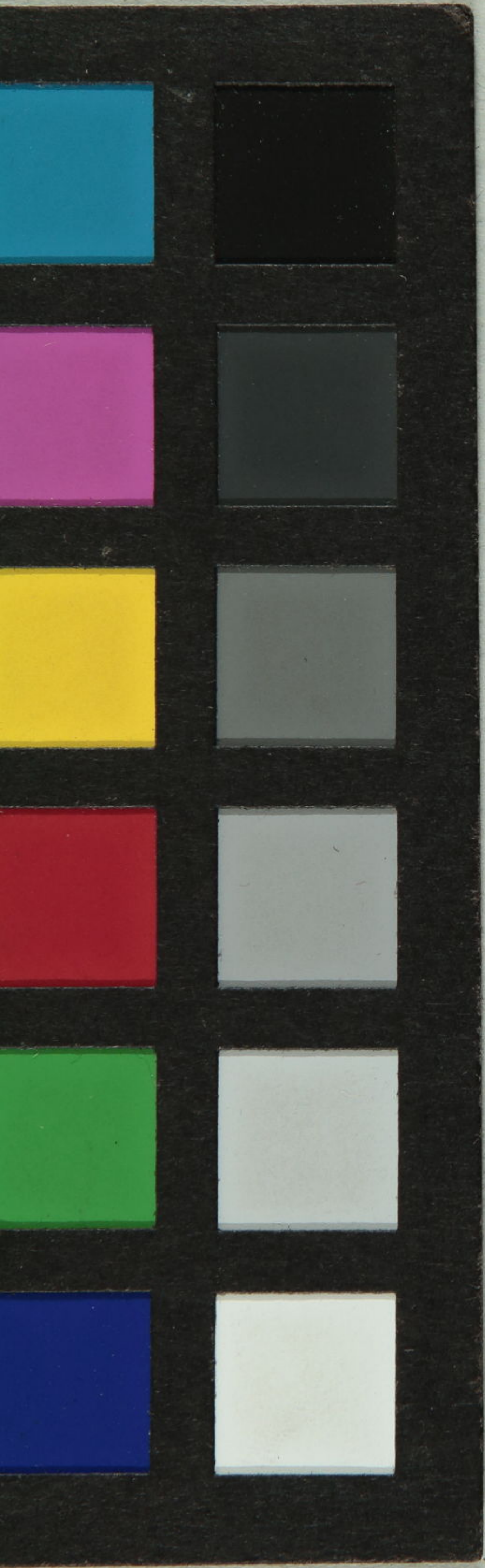


Red seal impression and a few characters of the artist's signature.

Two vertical columns of calligraphic text in cursive script, likely a poem or inscription related to the painting.



天  
文  
十  
七





鶯笈自画賛

