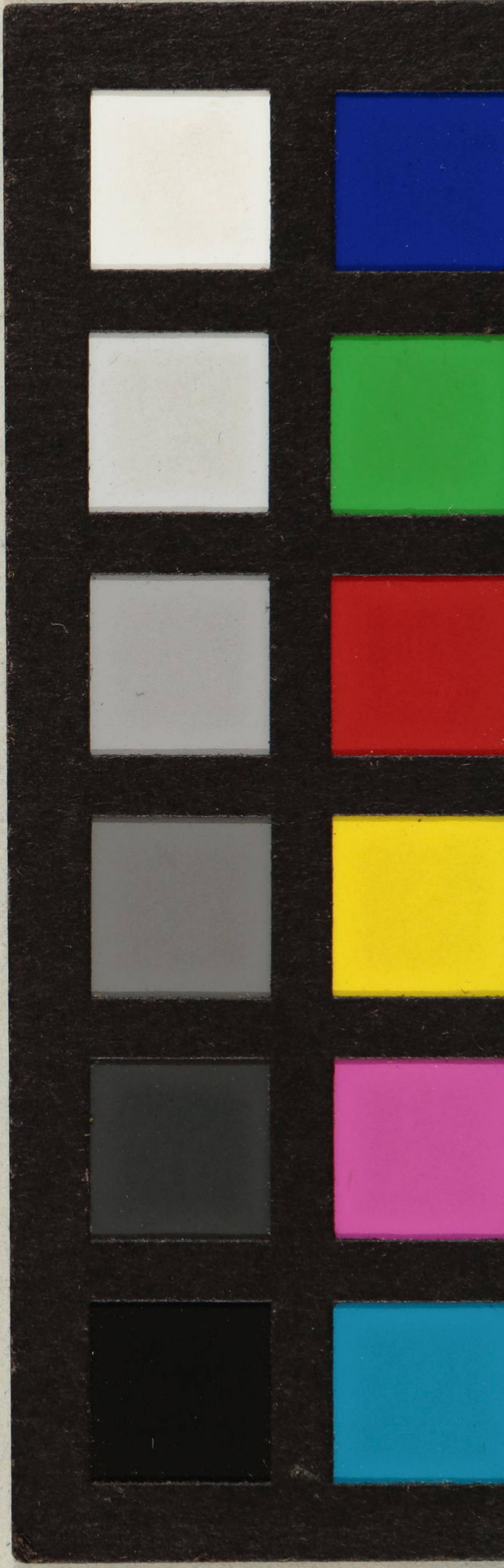


Handwritten Japanese calligraphy in cursive style (sōsho). The text is arranged in two vertical columns on a rectangular piece of aged paper. The right column contains the characters 徳川 家康 (Tokugawa Iyeyasu) and the left column contains 徳川 秀忠 (Tokugawa Hidetada). The characters are written in a fluid, connected style.





Handwritten Japanese calligraphy in cursive style (sōsho). The characters are arranged vertically in two columns. The right column contains characters that appear to be '子' (ko) and '子' (ko). The left column contains characters that appear to be '子' (ko) and '子' (ko). The ink is dark and the brushwork is expressive with varying line thicknesses.

